

STATE OF ILLINOIS
DEPARTMENT OF TRANSPORTATION

| | | | | |
|-----------------------|---------|-----------|------------------|-----------|
| ROUTE NO. | SECTION | COUNTY | TOTAL SHEETS | SHEET NO. |
| F.A.P. 315 | 55-2 | McDONOUGH | 1025 | 9 |
| FED. ROAD DIST. NO. 4 | | ILLINOIS | FED. AID PROJECT | 16 SHEETS |

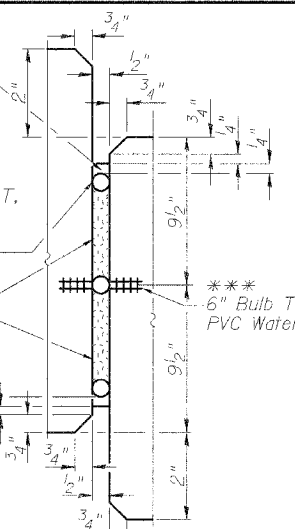
Contract # 68205

TABLE OF ELEVATIONS

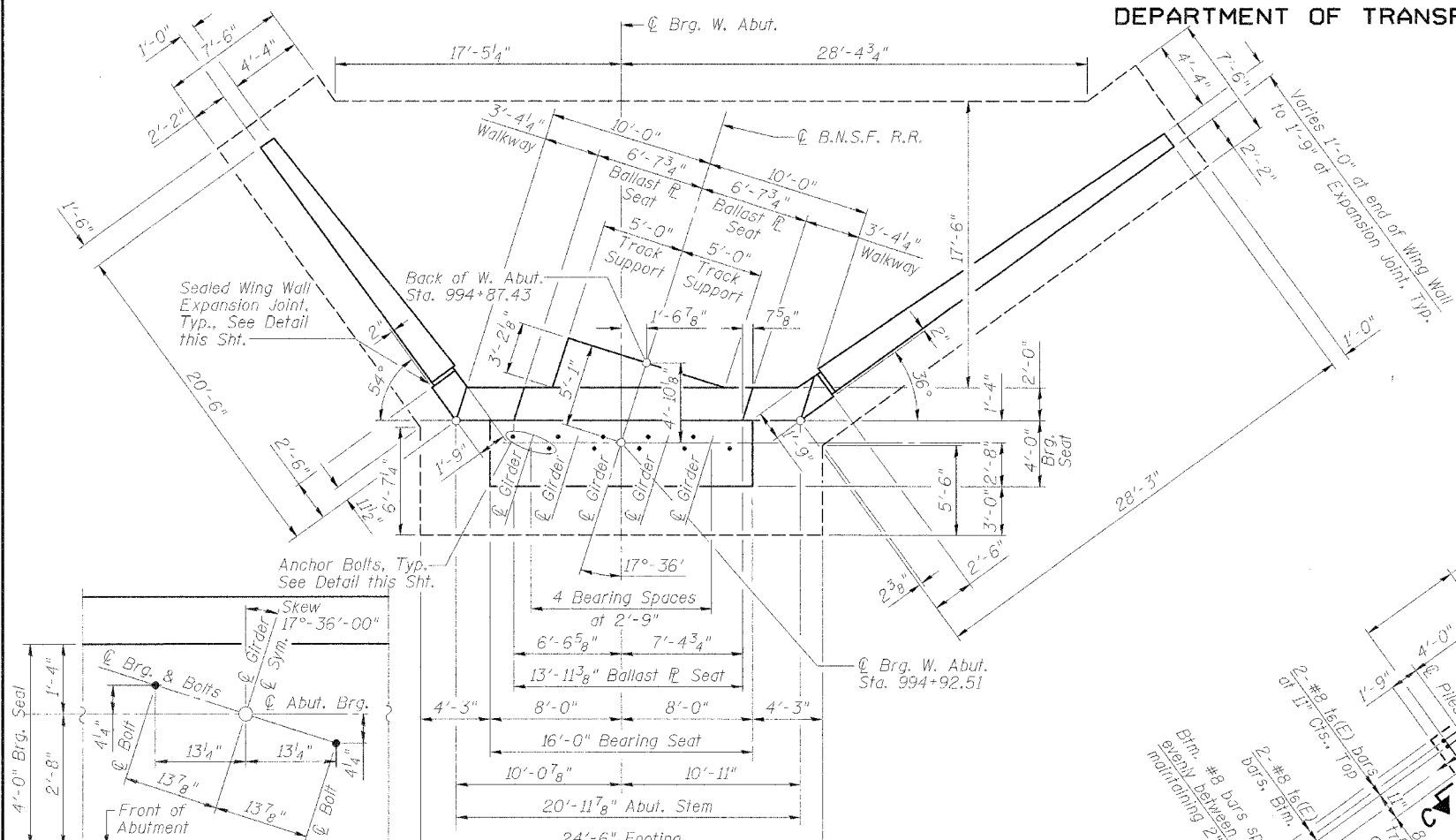
| Location | Elev. Point | W. Abut. |
|---|-------------|----------|
| Girder Bearing Seat | (A) | 683.39 |
| Bottom of Footing | (B) | 668.48 |
| Ballast Plate Seat (Top of Girder) Top of Masonry Plate, See Section H-H Sht. 3 of 16 | (C) | 691.27 |
| Top of Walkway (Inside Edge) | (D) | 692.52 |
| Top of Walkway (Outside Edge) | (E) | 692.56 |
| Track Supp. Ledge at BK. of Abut. | (F) | 690.77 |

*** Non-staining gray one component non-sag elastomeric gun grade polyurethane sealant meeting the requirements of ASTM C-920, Type S, Grade NS, Class 25. Use T, typical 3 sides of joint.
*** 5/8" ϕ Backer Rod, typical 3 sides of joint.
*** 1/2" Preformed Self-Expanding Cork Joint Filler according to Article 1051.07 of the Std. Spec. Cost included with Concrete Structures.
*** 6" Bulb T PVC Waterstop

SEALED WING WALL
EXPANSION JOINT DETAIL

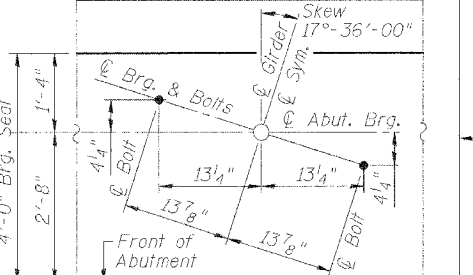


*** Cost included with Concrete Structures.

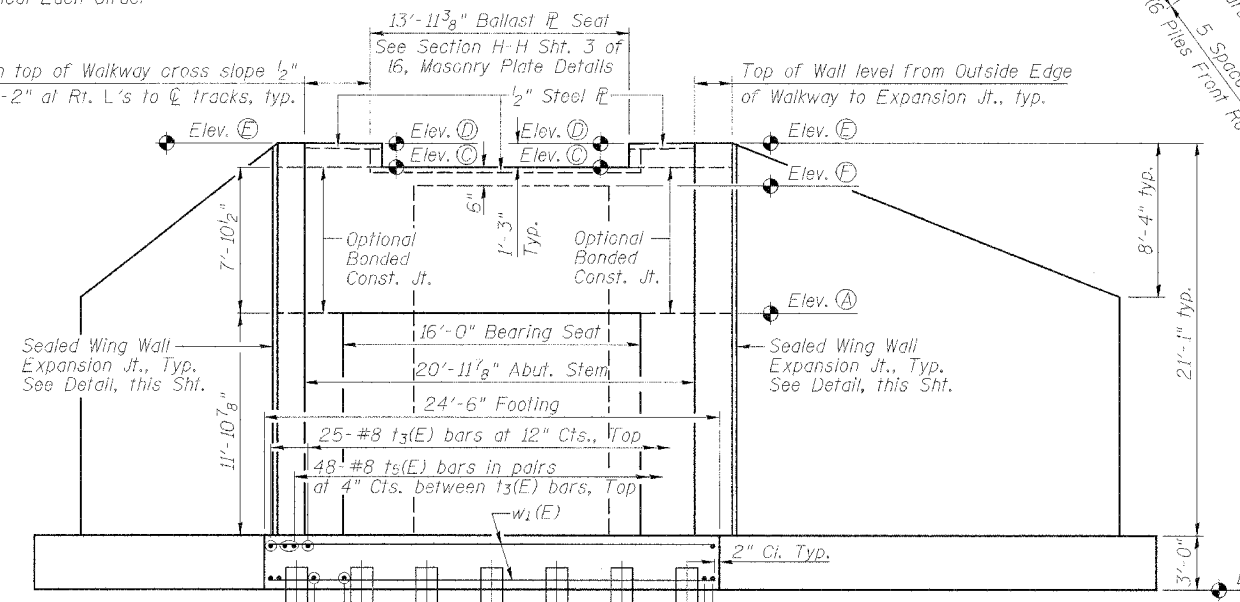


ANCHOR BOLT SETTING DIAGRAM

At West Abutment (Expansion Brg.)
Typical Each Girder



FOOTING AND WALL PLAN



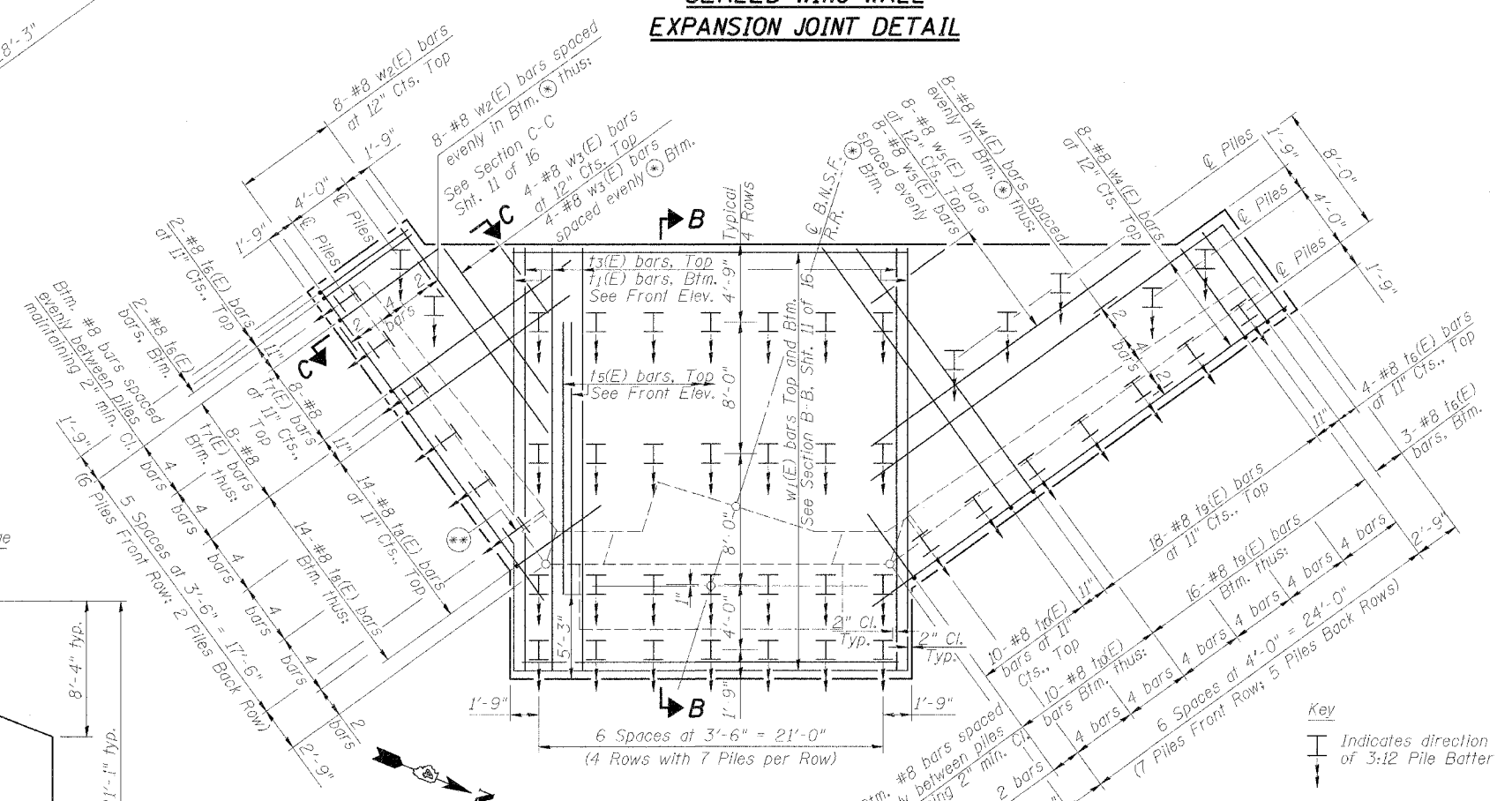
| | |
|----------|-----|
| DESIGNED | PJL |
| CHECKED | WDL |
| DRAWN | MGM |
| CHECKED | PJL |

Notes:
1. Space reinforcement in cap to miss anchor bolts.
2. All edges shall have standard 3/4" chamfers except as noted.
3. Reinforcement bars designated (E) shall be epoxy coated.

FRONT ELEVATION

PILE DATA

Type: Steel (HP 14 x 73)
Capacity: Design 61 tons; Req'd Bearing 91.5 tons
Est. Length: 57'
No. Req'd: 47 (plus 1 test pile)



PILE LAYOUT

Bottom bars provide 2" Cl. at piles:
* Where possible, fan or shift bars (First Choice).
** Field Cut bars.

WEST ABUTMENT DETAILS
BURLINGTON NORTHERN
SANTA FE RAILROAD OVER
RAMP I
F.A.P. ROUTE 315 SECT. 55-2
McDONOUGH COUNTY
STATION 21+61.48
STRUCTURE NO. 055-9902
B.N.S.F. LINE SEGMENT 0011
B.N.S.F. BRIDGE NO. 206.13

