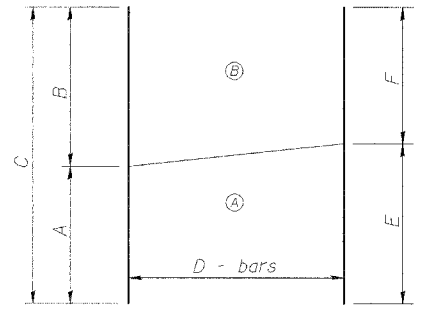
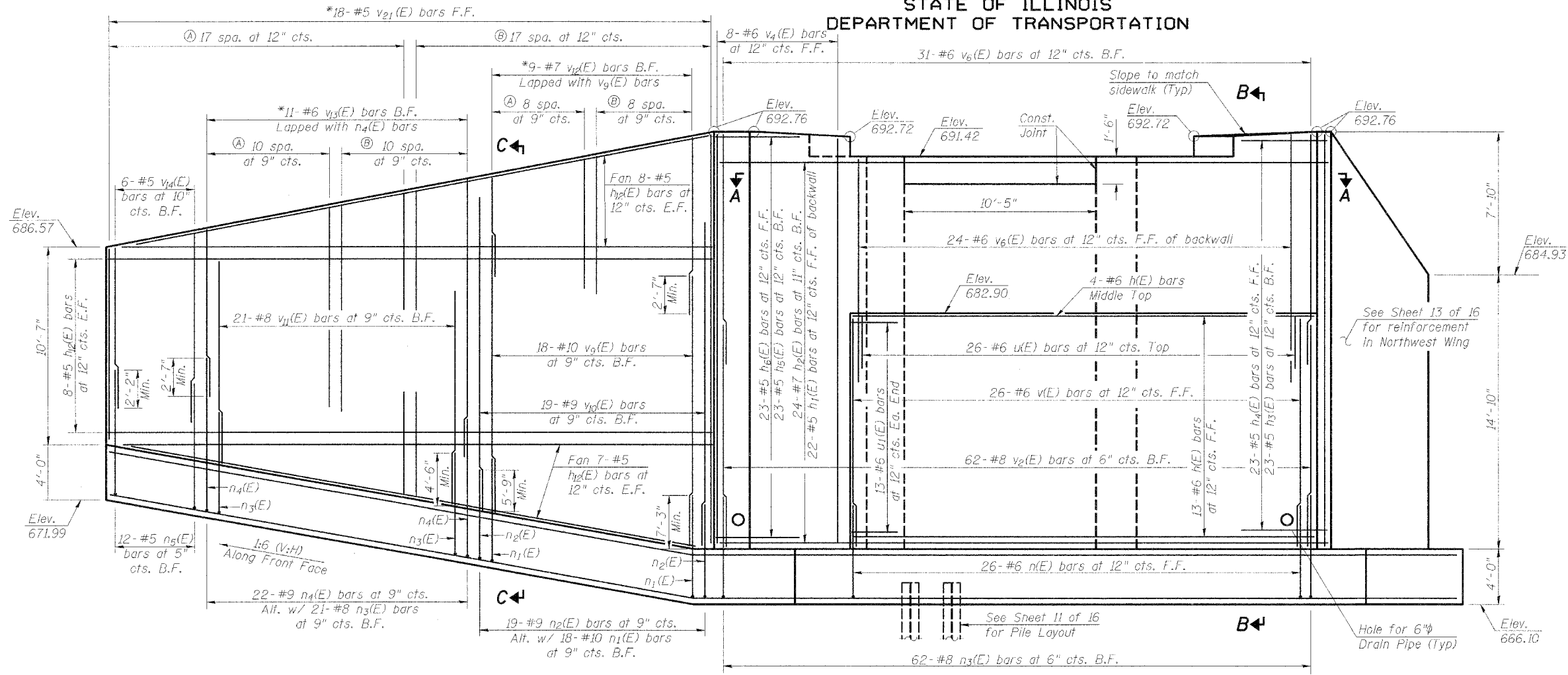


STATE OF ILLINOIS
DEPARTMENT OF TRANSPORTATION

ROUTE NO.	SECTION	COUNTY	EST. SHEETS	SHEET NO.	SHEET NO.
FAP 315	55-2	McDONOUGH	1025	544	16 SHEETS
FED. ROAD DIST. NO. 7		ILLINOIS	FED. AID PROJECT		

Contract #68205

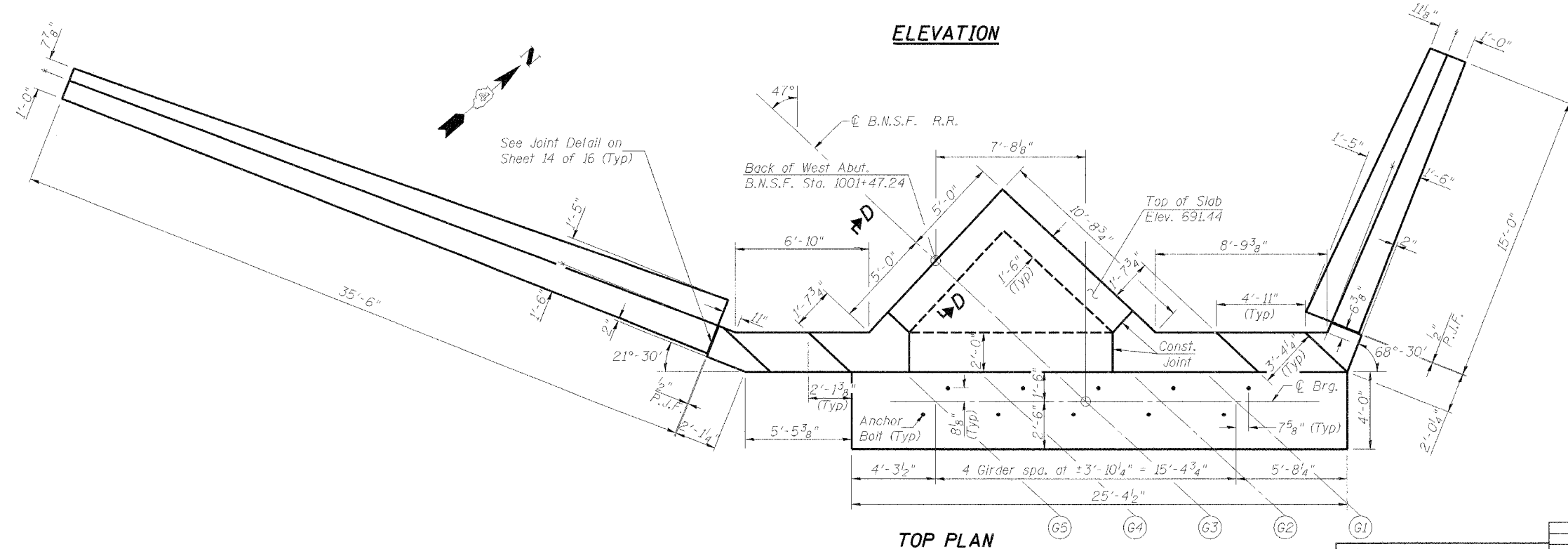


FIELD CUTTING DIAGRAM

* Cut bars in field as shown. Place patterns A and B side by side as shown on plans.

Bar	A	B	C	D	E	F
v12(E)	5'-8"	9'-11"	15'-7"	9	7'-8"	7'-11"
v13(E)	8'-11"	14'-4"	23'-3"	11	11'-6"	11'-9"
v21(E)	10'-3"	22'-5"	32'-8"	18	16'-1"	16'-7"

ELEVATION



TOP PLAN

NOTES

1. Reinforcement designated (E) shall be epoxy coated.
2. See Sheet 14 of 16 for bar bends, Bill of Material, and drainage details.
3. Space reinforcement bars to miss anchor bolts.
4. Work this sheet with Sheets 11 and 13 of 16.
5. See Sheet 13 of 16 for Sections A-A, B-B, C-C and D-D.
6. See Sheet 14 of 16 for PJF Joint Detail.

ILLINOIS DEPARTMENT OF TRANSPORTATION
WEST ABUTMENT DETAILS
BURLINGTON NORTHERN
SANTA FE RAILROAD OVER RAMP J
F.A.P. ROUTE 315 SECT. 55-2
McDONOUGH COUNTY
STATION 162+14.00
STRUCTURE NO. 055-9903
B.N.S.F. LINE SEGMENT 0011
B.N.S.F. BRIDGE NO. 206.00

LIN ENGINEERING, LTD.
210 W. Chestnut
Chicago, Illinois 60629
Tel: 431-1622 Fax: 431-4106
Designed By: DLS Checked By: MTH Drawn By: JME
Date: 01/06 File: 0559903.DGN

REVISIONS	
NAME	DATE

\$FILEABBREV\$
 \$TIME\$
 \$DATE\$

0559903.mxd 3/20/2006 11:24:06 AM