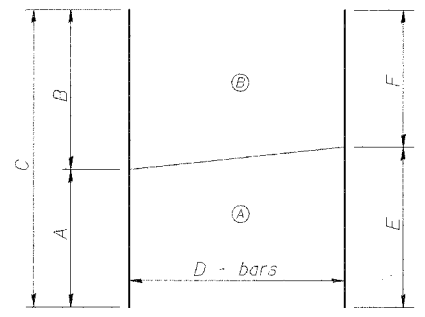
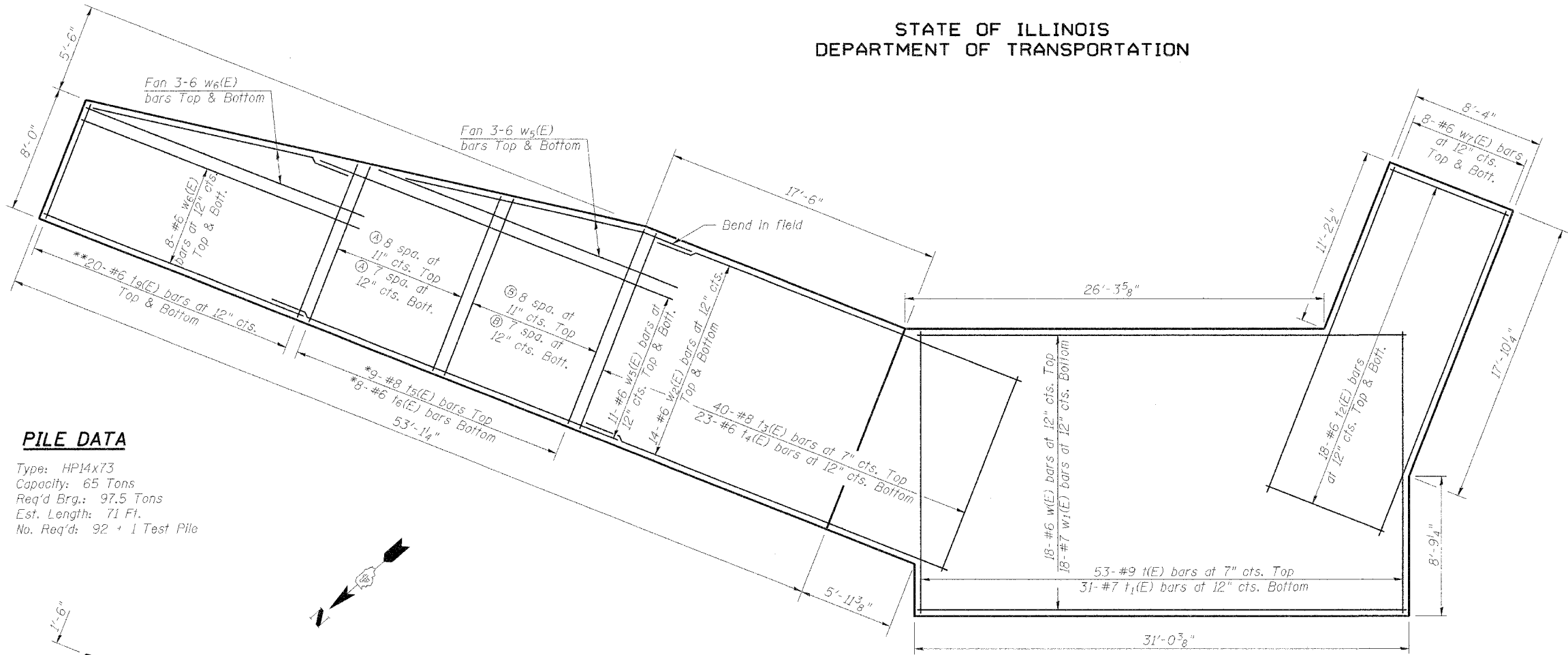


STATE OF ILLINOIS
DEPARTMENT OF TRANSPORTATION

ROUTE NO. FAP 315	SECTION 55-2	COUNTY McDONOUGH	SHEET NO. 1025	SHEET NO. 547	SHEET NO. 12 16 SHEETS
FED. ROAD DIST. NO. 7		ILLINOIS FED. AID PROJECT			

Contract #68205



FIELD CUTTING DIAGRAM

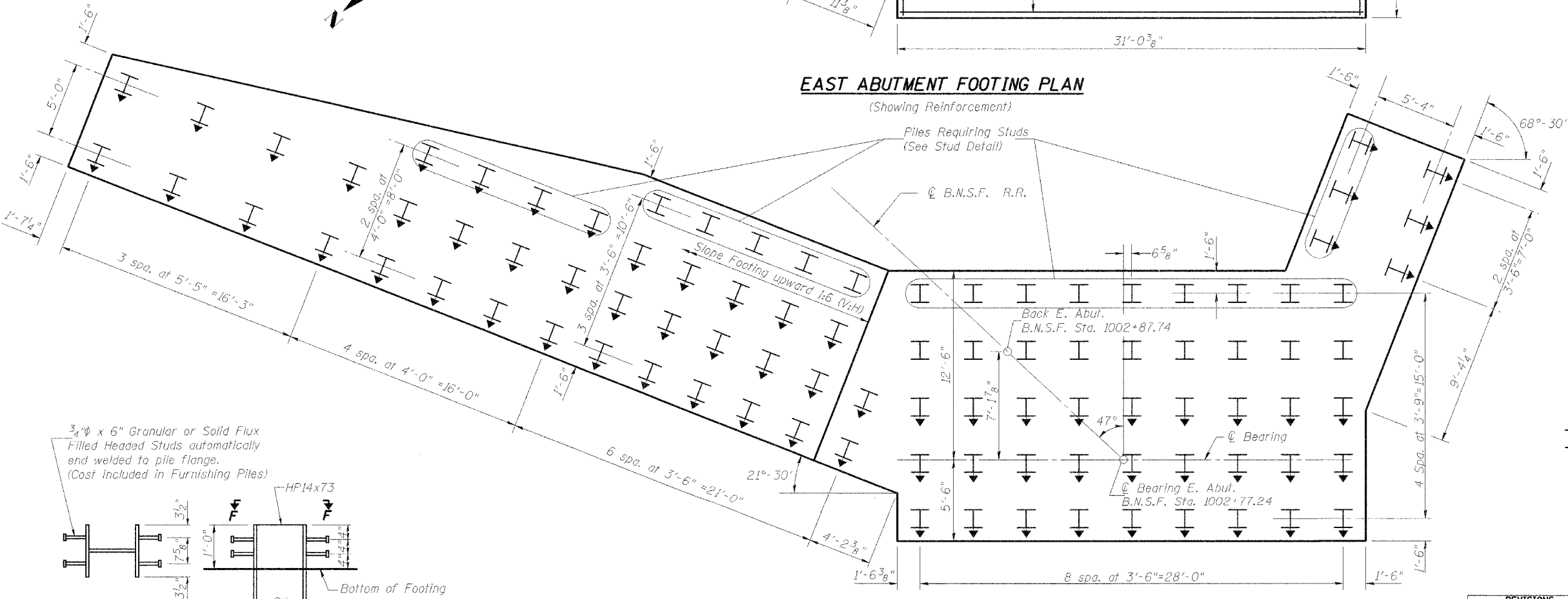
* Cut $t_7(E)$ and $t_8(E)$ bars in field as shown. Place patterns (A) and (B) side by side as shown on plans.
** Cut $t_9(E)$ bars in field as shown and use remainder in opposite face.

Bar	A	B	C	D	E	F
$t_7(E)$	10'-9"	13'-3"	24'-0"	9	11'-11"	12'-1"
$t_8(E)$	10'-9"	13'-3"	24'-0"	8	11'-11"	12'-1"
$t_9(E)$	7'-9"	10'-7"	18'-4"	20	10'-7"	7'-9"

PILE DATA

Type: HP14x73
Capacity: 65 Tons
Req'd Brg.: 97.5 Tons
Est. Length: 71 Ft.
No. Req'd: 92 + 1 Test Pile

EAST ABUTMENT FOOTING PLAN
(Showing Reinforcement)



MIN. BAR LAP

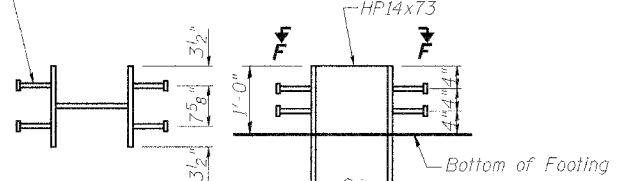
#6 Bars = 2'-7"

NOTES

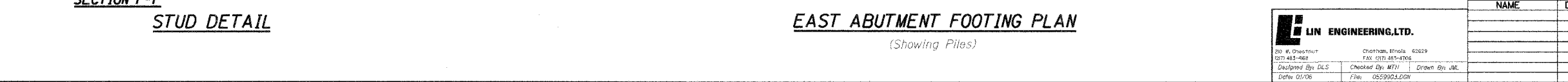
1. Space bottom footing reinforcement to miss piles.
2. Reinforcement designated (E) shall be epoxy coated.
3. See Sheet 14 of 16 for Bill of Material.
4. Work this sheet with Sheet 10 of 16.

Indicates battered pile. Batters are 3:12 in direction indicated.

3/4" x 6" Granular or Solid Flux Filled Headed Studs automatically end welded to pile flange. (Cost included in Furnishing Piles)



EAST ABUTMENT FOOTING PLAN
(Showing Piles)



LIN ENGINEERING, LTD.
20 W. Chestnut
Chicago, Illinois 60629
Tel: (312) 467-1100
Fax: (312) 467-1106
Designed By: DLS
Checked By: MTH
Drawn By: JML
Date: 01/06
File: 0559903.DWG

REVISIONS	
NAME	DATE

ILLINOIS DEPARTMENT OF TRANSPORTATION
EAST ABUTMENT FOOTING
BURLINGTON NORTHERN
SANTA FE RAILROAD OVER RAMP J
F.A.P. ROUTE 315 SECT. 55-2
McDONOUGH COUNTY
STATION 162+14.00
STRUCTURE NO. 055-9903
B.N.S.F. LINE SEGMENT 0011
B.N.S.F. BRIDGE NO. 206.00

\$DATE\$ \$TIMES\$ \$FILE\$ \$ABBREV\$ \$