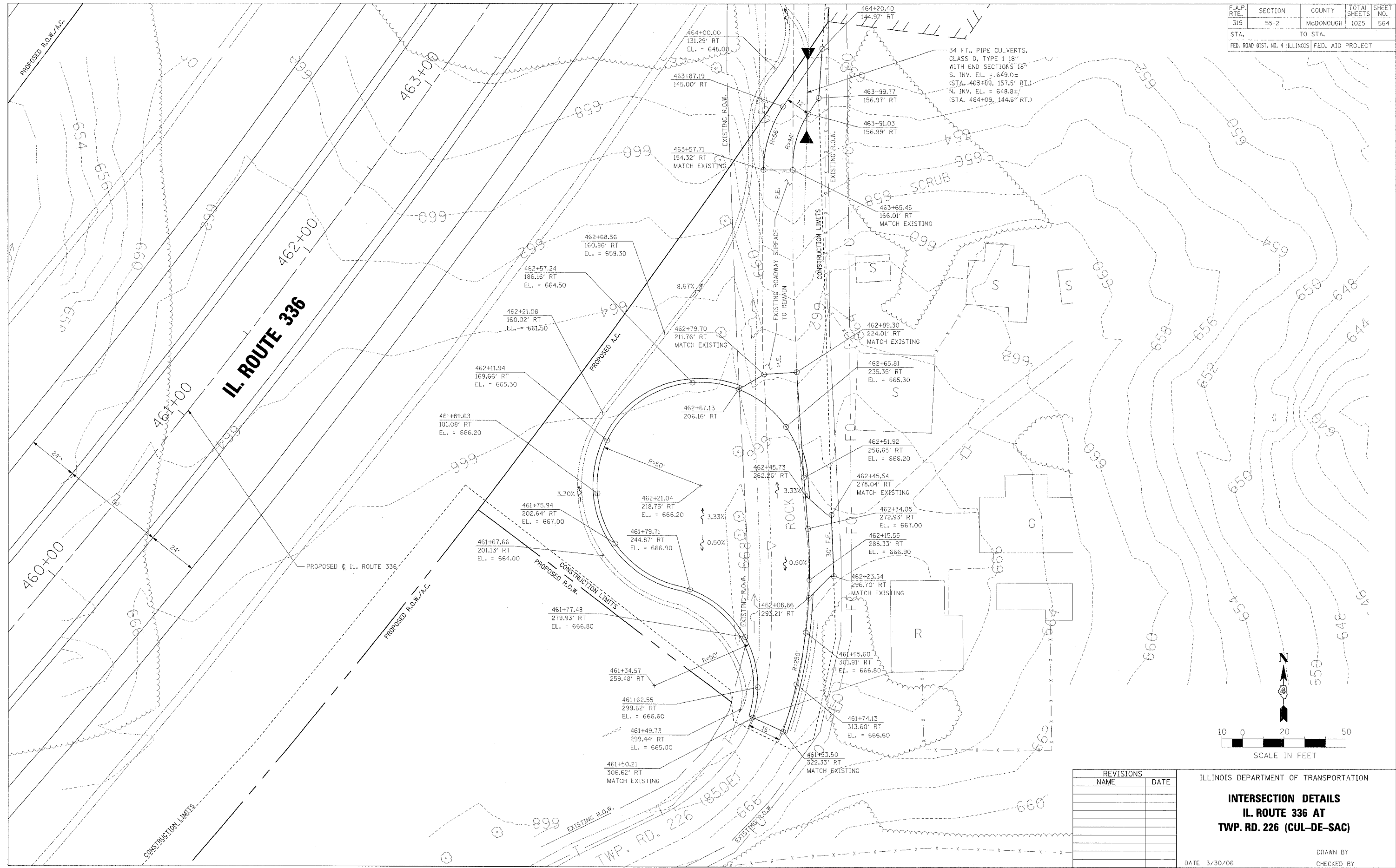
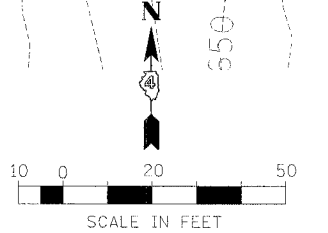


F.A.P. RTE.	SECTION	COUNTY	TOTAL SHEETS	SHEET NO.
315	55-2	McDONOUGH	1025	564
STA.		TO STA.		
FED. ROAD DIST. NO. 4 ILLINOIS FED. AID PROJECT				



34 FT. PIPE CULVERTS,  
CLASS D, TYPE 1 18"  
WITH END SECTIONS 18"  
S. INV. EL. = 649.0±  
(STA. 463+89, 157.5' RT.)  
N. INV. EL. = 648.8±  
(STA. 464+09, 144.5' RT.)



REVISIONS	
NAME	DATE

ILLINOIS DEPARTMENT OF TRANSPORTATION  
**INTERSECTION DETAILS**  
**IL. ROUTE 336 AT**  
**TWP. RD. 226 (CUL-DE-SAC)**  
DATE 3/30/06  
DRAWN BY  
CHECKED BY