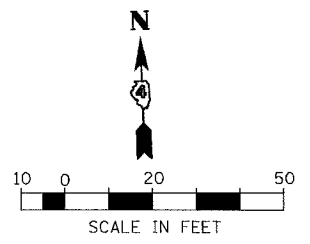
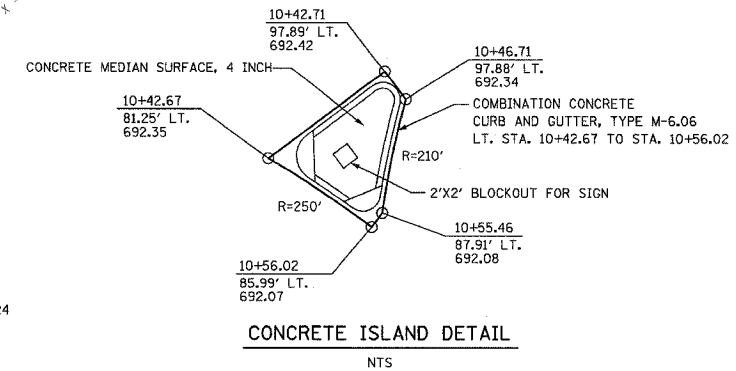
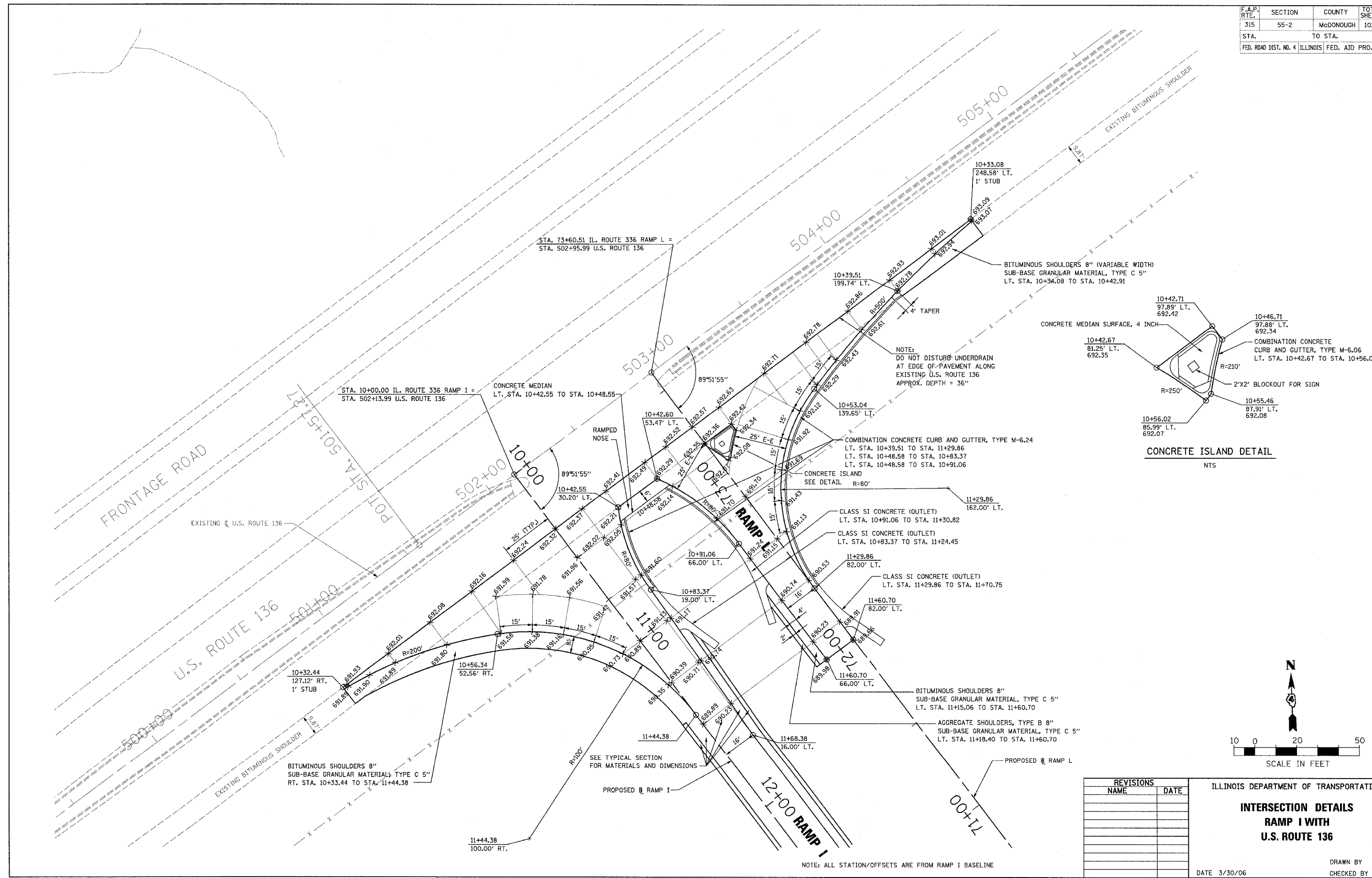


F.A.P. RTE.	SECTION	COUNTY	TOTAL SHEETS	SHEET NO.
315	55-2	McDONOUGH	1025	566
STA.		TO STA.		
FED. ROAD DIST. NO. 4		ILLINOIS FED. AID PROJECT		



REVISIONS	
NAME	DATE

ILLINOIS DEPARTMENT OF TRANSPORTATION
INTERSECTION DETAILS
RAMP I WITH
U.S. ROUTE 136

DATE 3/30/06

DRAWN BY
CHECKED BY

NOTE: ALL STATION/OFFSETS ARE FROM RAMP I BASELINE