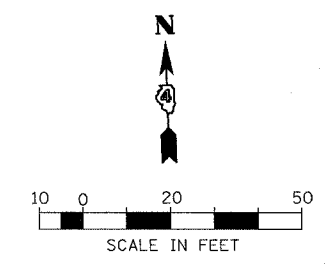
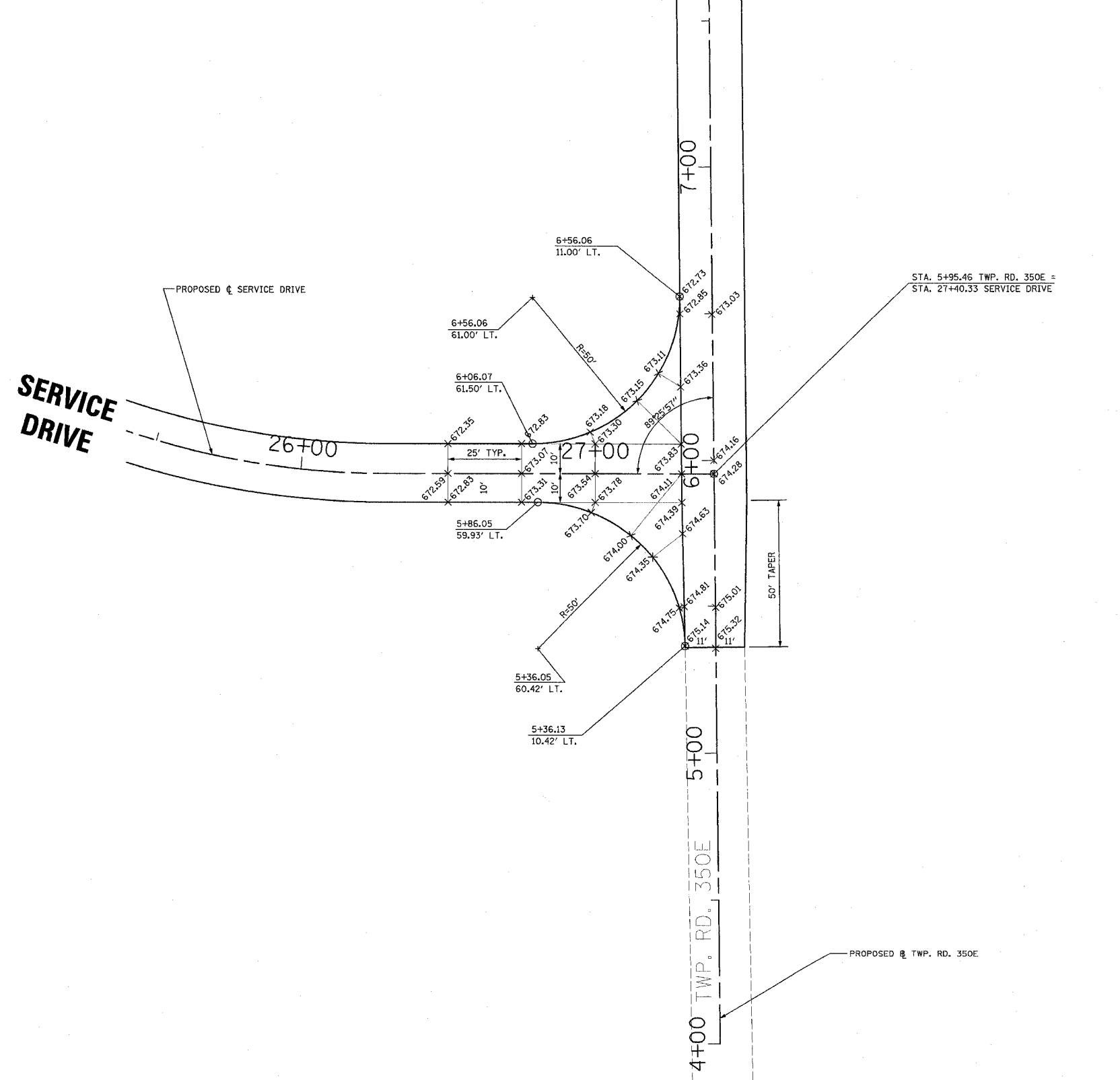


F.A.P. RTE.	SECTION	COUNTY	TOTAL SHEETS	SHEET NO.
315	55-2	McDONOUGH	1025	569
STA.		TO STA.		
FED. ROAD DIST. NO. 4		ILLINOIS	FED. AID PROJECT	



REVISIONS	
NAME	DATE

ILLINOIS DEPARTMENT OF TRANSPORTATION  
**INTERSECTION DETAILS**  
**TWP. RD. 350E WITH SERVICE DRIVE**  
 DATE 3/30/06  
 DRAWN BY  
 CHECKED BY

I:\PROJECTS\06-0315\06-0315-055-2\DWG\06-0315-055-2-569.DWG