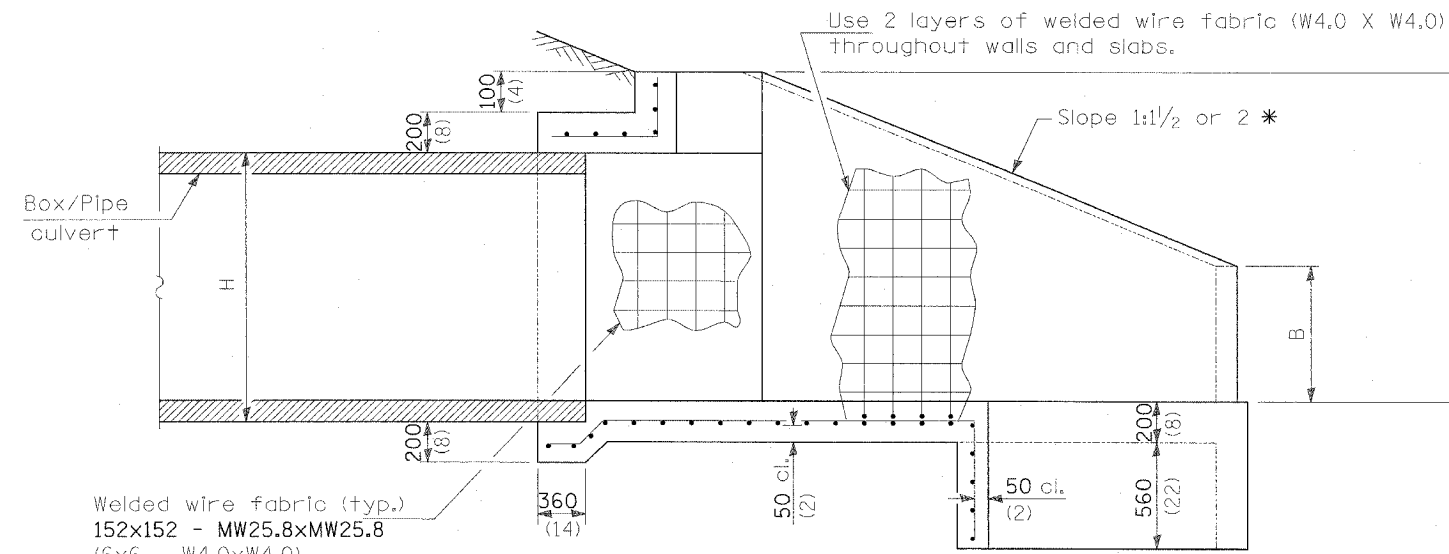
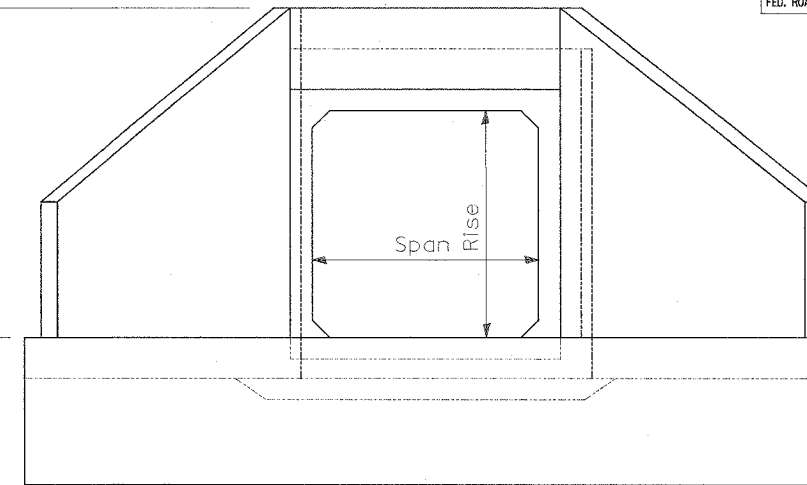


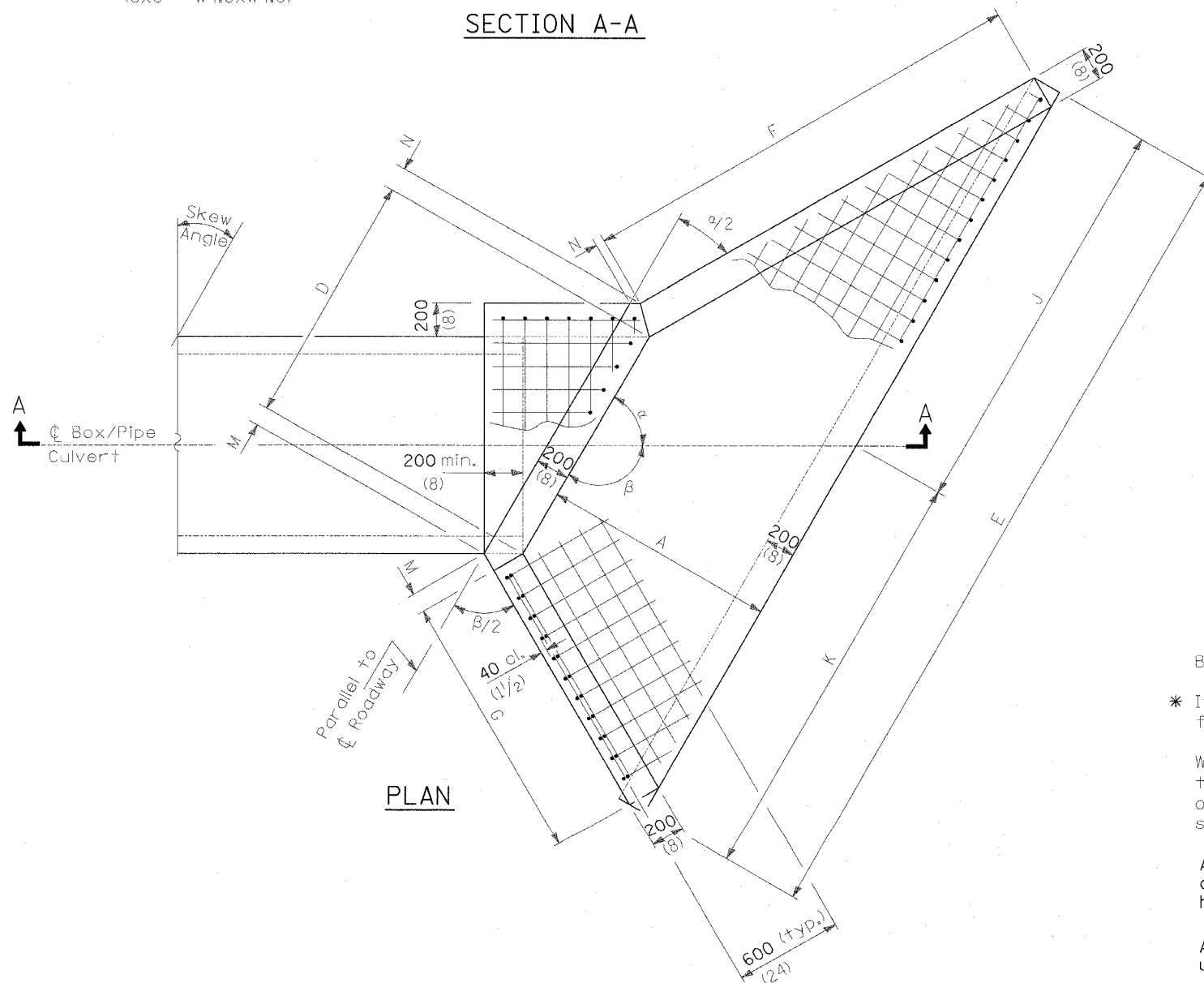
F.A.P. RTE.	SECTION	COUNTY	TOTAL SHEETS	SHEET NO.
315	55-2	McDONOUGH	1025	602
STA.	TO STA.			
FED. ROAD DIST. NO. 4	ILLINOIS	FED. AID PROJECT		



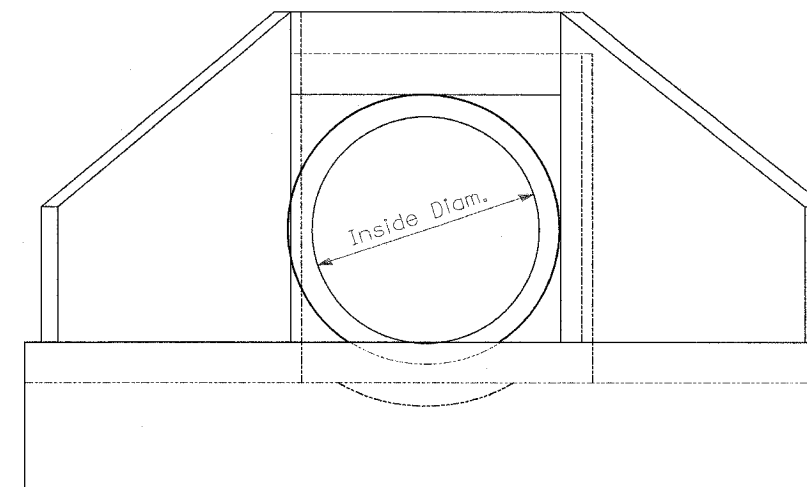
SECTION A-A



END VIEW - BOX CULVERT



PLAN



END VIEW - PIPE CULVERT

GENERAL NOTES

- Build tops of headwalls parallel to grade line.
- * If embankment slope above headwall is flatter than 1:2, provide wings for 1:2 slope.
- When lapping sheets of welded wire fabric, the overlap measured between the outermost cross wires of each fabric sheet shall not be less than 202 mm (8").
- All slope ratios are expressed as units of vertical displacement to units of horizontal displacement (V:H).
- All dimensions are in millimeters (inches) unless otherwise shown.

REVISIONS	
NAME	DATE

ILLINOIS DEPARTMENT OF TRANSPORTATION
DETAIL
REINFORCED CONCRETE END SECTIONS
FOR BOX/PIPE CULVERTS
SKEWED WITH ROADWAY
 SHEET 1 OF 2
 DRAWN BY
 DATE 3/30/06
 CHECKED BY