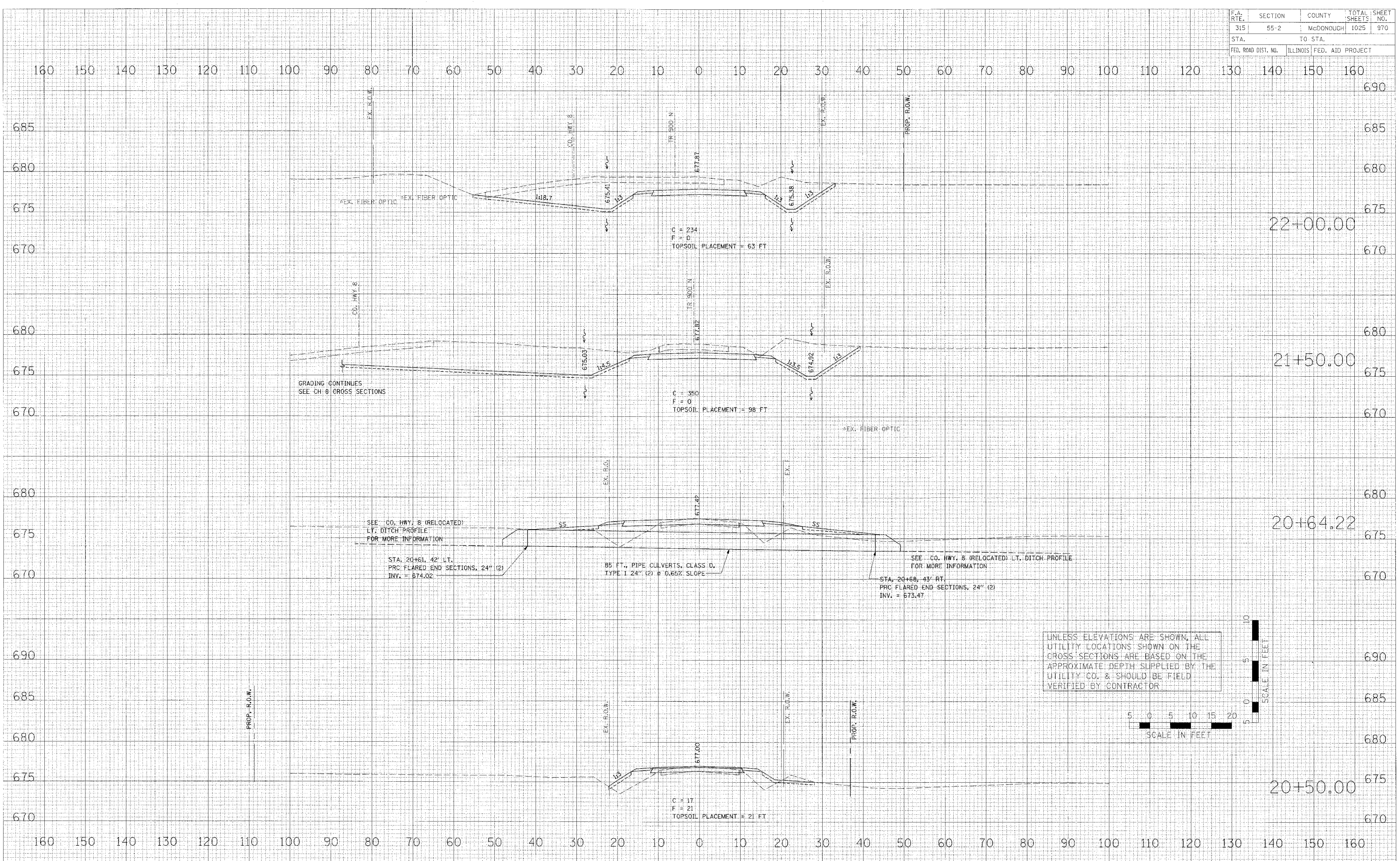


F.A. RTE.	SECTION	COUNTY	TOTAL SHEET NO.
315	55-2	MCDONOUGH	1025
STA. TO STA.			970
FED. ROAD DIST. NO.			ILLINOIS FED. AID PROJECT

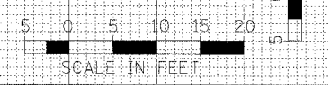
DATE	BY

DATE	BY

PLOT DATE = 08/27/06
 PLOT SCALE = 850/110
 USER NAME = RUSERR



UNLESS ELEVATIONS ARE SHOWN, ALL UTILITY LOCATIONS SHOWN ON THE CROSS-SECTIONS ARE BASED ON THE APPROXIMATE DEPTH SUPPLIED BY THE UTILITY CO. & SHOULD BE FIELD VERIFIED BY CONTRACTOR.



CROSS SECTIONS - TWP. RD. 900N (WEST)