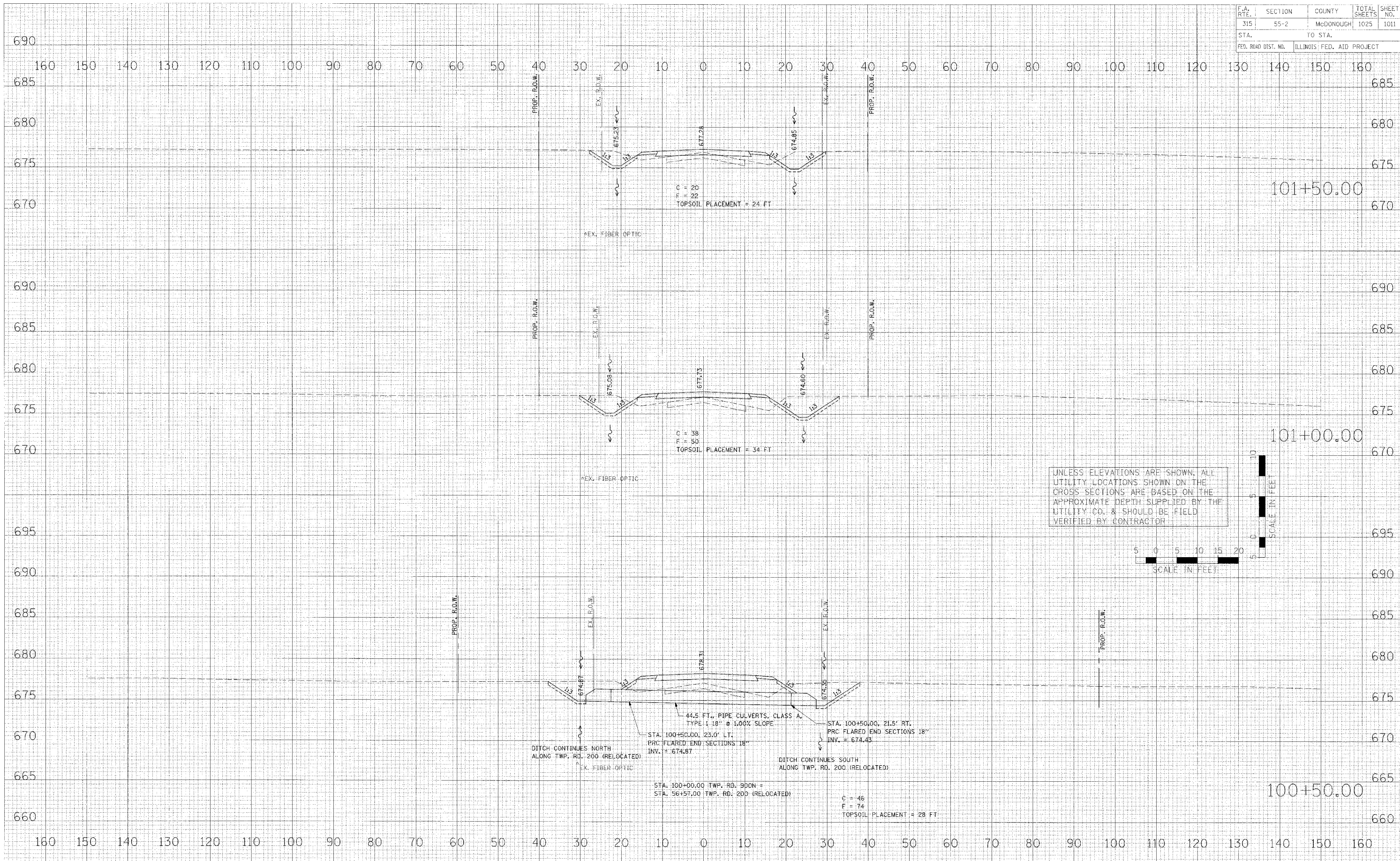
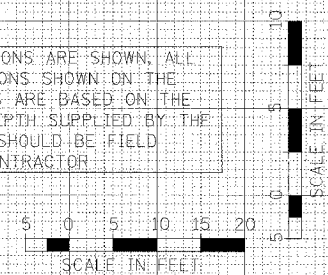


F.A. RTE.	SECTION	COUNTY	TOTAL SHEETS	SHEET NO.
315	55-2	MCDONOUGH	1025	1011
STA.		TO STA.		
FED. ROAD DIST. NO.		ILLINOIS FED. AID PROJECT		



UNLESS ELEVATIONS ARE SHOWN, ALL UTILITY LOCATIONS SHOWN ON THE CROSS SECTIONS ARE BASED ON THE APPROXIMATE DEPTH SUPPLIED BY THE UTILITY CO. & SHOULD BE FIELD VERIFIED BY CONTRACTOR



FILED	SURVEYED	DATE
SHEET	FLIPPED	
NOTE BOOK	TEMPLATE	
	AREAS CHECKED	

ORIGINAL	DATE
SHEET	
NOTE BOOK	

PLOT DATE = 6/2/06
PLOT SCALE = 1" = 20'
USER NAME = JUS218

CROSS SECTIONS - TWP. RD. 900N (EAST)