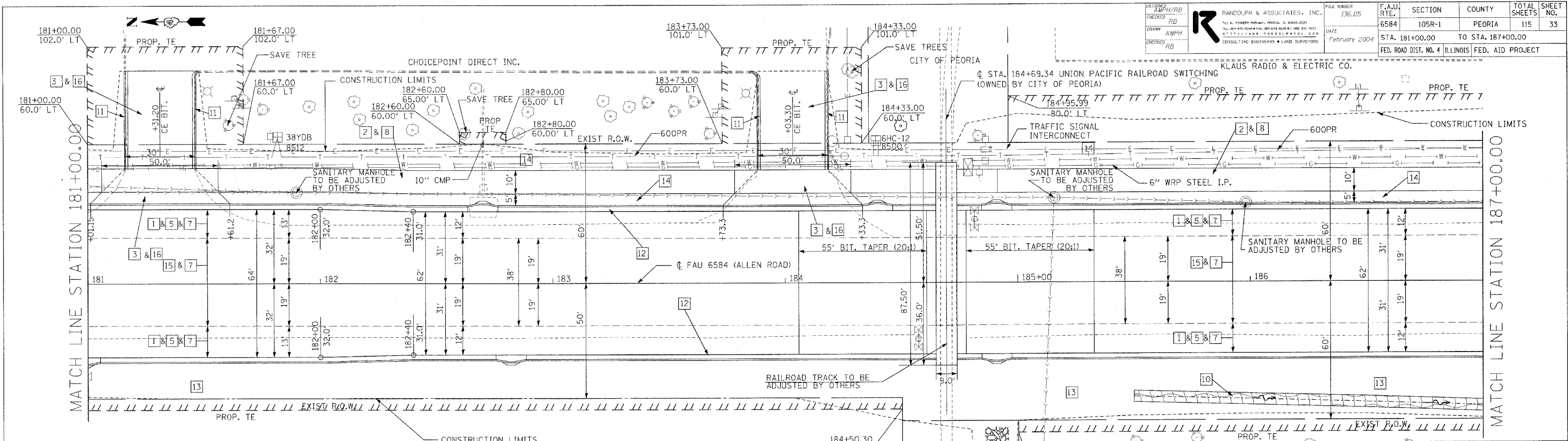


DESIGNED AMPH/RB	CHECKED RB	DRAWN AMPH	CHECKED RB	FILE NUMBER 136.115	F.A.U. RTE. 6584	SECTION 105R-1	COUNTY PEORIA	TOTAL SHEET SHEETS 115	SHEET NO. 33	
RANDOLPH & ASSOCIATES, INC. 111 W. PIONEER PARKWAY, PEORIA, IL 61603-2131 TEL. 309-690-6344 FAX 309-690-8024 800-531-7011 REGISTERED PROFESSIONAL ENGINEERS & LAND SURVEYORS CONSULTING ENGINEERS & LAND SURVEYORS				DATE February 2004	STA. 181+00.00 TO STA. 187+00.00		FED. ROAD DIST. NO. 4 ILLINOIS		FED. AID PROJECT	



- | | | | |
|---|---|----|---------------------------------------|
| 1 | SUBBASE GRANULAR MATERIAL TYPE A 4" <i>Proposed</i> | 9 | BITUMINOUS BASE COURSE 4" |
| 2 | AGGREGATE BASE COURSE TYPE B, 6" | 10 | EROSION CONTROL BLANKET |
| 3 | BITUMINOUS BASE COURSE 6" | 11 | COMB. CONC. CURB & GUTTER TYPE B6.12 |
| 4 | BITUMINOUS CONCRETE SURFACE COURSE 1 1/2" | 12 | COMB. CONC. CURB & GUTTER TYPE B6.24 |
| 5 | BITUMINOUS BASE COURSE 12" | 13 | TOPSOIL & SEEDING |
| 6 | PORTLAND CEMENT CONCRETE PAVEMENT 10" | 14 | TOPSOIL & SOD |
| 7 | BITUMINOUS CONCRETE SURFACE COURSE 2" | 15 | LEVELING BINDER 3/4" |
| 8 | BITUMINOUS CONCRETE SURFACE COURSE MIX C 3" | 16 | INCIDENTIAL BITUMINOUS SURFACING - 2" |

PLAN	SURVEYED	BY	DATE
	NOTE BOOK		
	NO. OF PAGES		
	CAD FILE NAME		

PROFILE	SURVEYED	BY	DATE
	NOTE BOOK		
	NO. OF PAGES		
	STRUCTURE NOTATION SKYD		