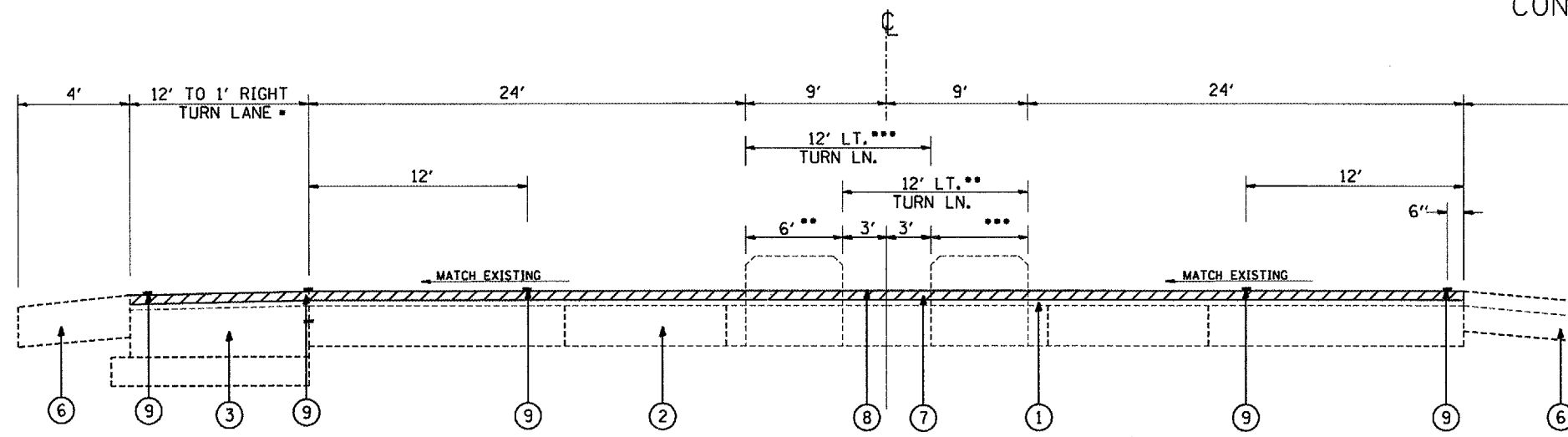


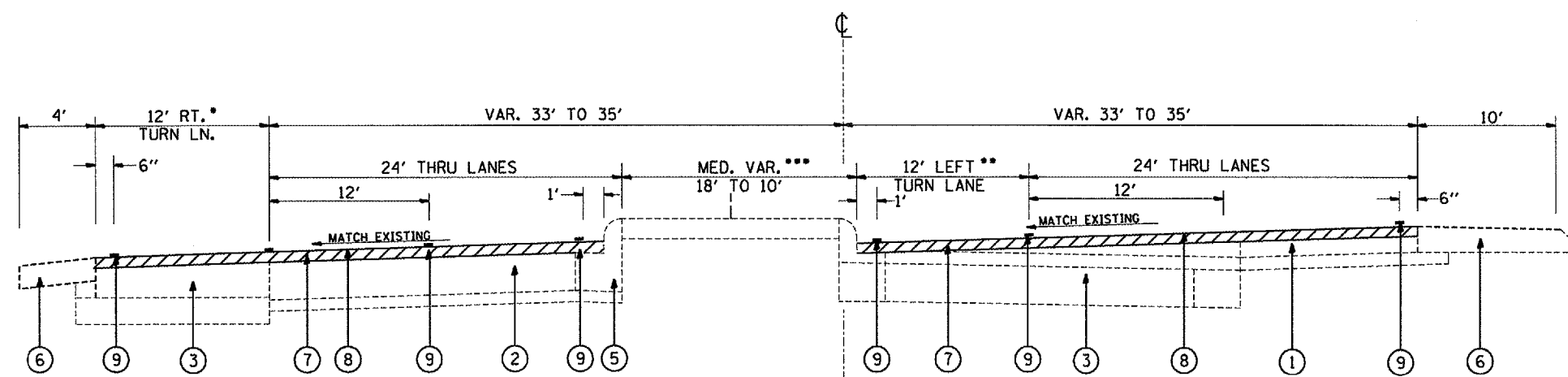
F. A. RTE.	SECTION	COUNTY	TOTAL SHEETS	SHEET NO
693	15 RS-2, 118 RS-4	TAZEWELL	28	11

CONTRACT NO. 68375



STA. 71+74(AH) TO STA. 79+87(AH)

- RT. TURN LANE LT. STA. 71+80.6(AH) TO 74+96(AH)
- 6' MED. AND LT. TURN LANE STA. 74+30(AH) TO 75+25(AH) & STA. 77+62(AH) TO 79+12(AH)
- 6' MED. AND LT. TURN LANE STA. 71+73.6(AH) TO 74+30(AH) & STA. 76+37(AH) TO 77+62(AH)



STA. 79+87(AH) TO STA. 87+75(AH)

- STA. 84+04(AH) TO 87+35(AH)
- STA. 80+40(AH) TO 82+80(AH) AND STA. 85+75(AH) TO 87+10(AH)
- EARTH MEDIAN STA. 79+87(AH) TO 80+40(AH) AND STA. 83+50(AH) TO 85+75(AH)
CONC. MEDIAN STA. 80+40(AH) TO 83+50(AH) AND STA. 85+75(AH) TO 87+55(AH)

LEGEND

- ① EXISTING BITUMINOUS OVERLAY
- ② EXISTING P.C.C. PAVEMENT, 10"
- ③ EXISTING P.C.C. BASE COURSE 9"
- ④ EXISTING P.C.C. MEDIAN
- ⑤ EXISTING COMB. CONC. CURB & GUTTER
- ⑥ EXISTING STABILIZED SHOULDER
- ⑦ PROPOSED BIT. SURF. REMOVAL, 2"
- ⑧ PROPOSED POLY BIT. SURF. CSE. SUPER. N70 2"
- ⑨ PROPOSED PAVEMENT MARKING LINE

ILLINOIS DEPARTMENT OF TRANSPORTATION

PROPOSED
TYPICAL SECTION

NOT TO SCALE