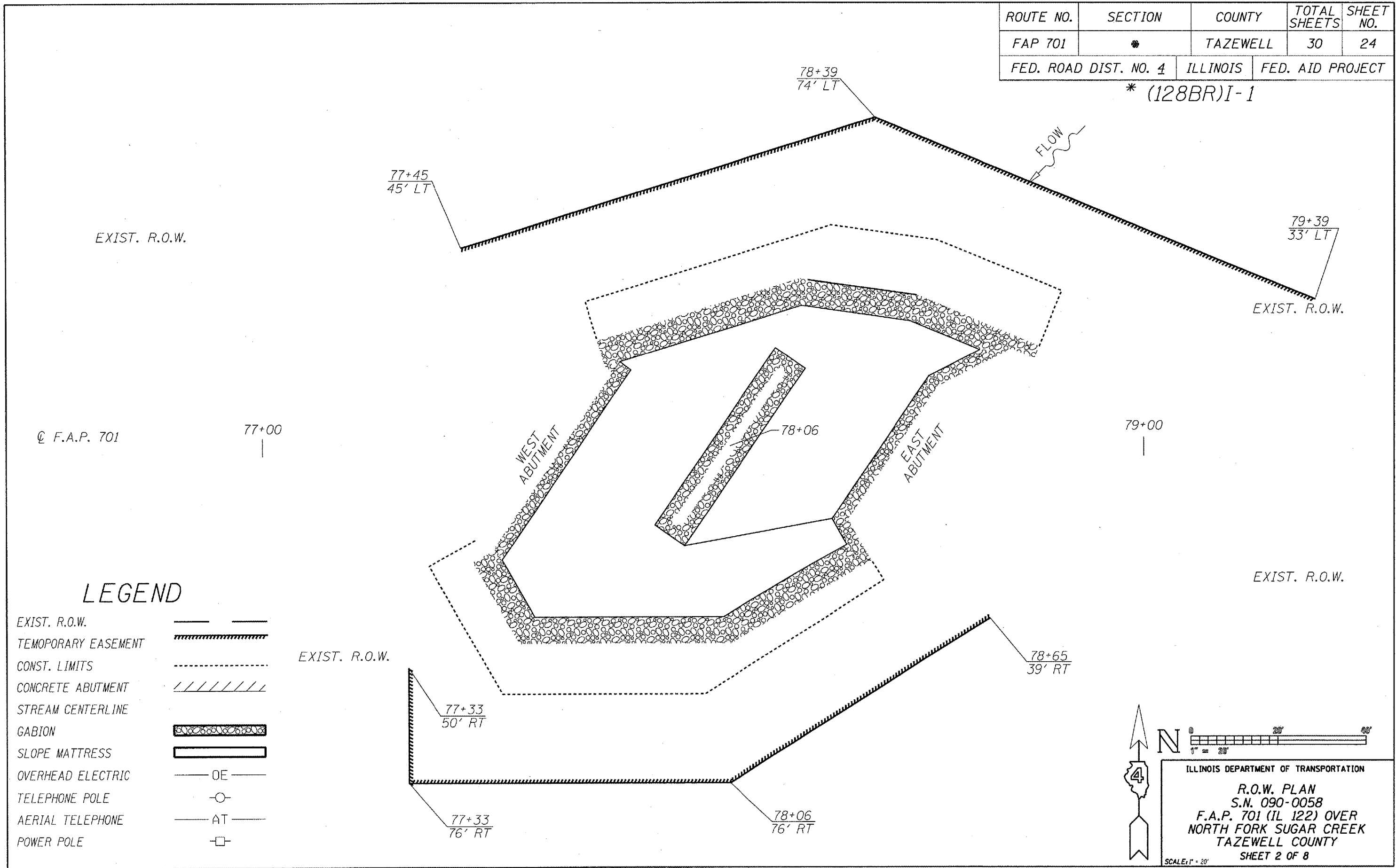


68484

ROUTE NO.	SECTION	COUNTY	TOTAL SHEETS	SHEET NO.
FAP 701	*	TAZEWELL	30	24
FED. ROAD DIST. NO. 4		ILLINOIS	FED. AID PROJECT	

\*(128BR)I-1



LEGEND

- EXIST. R.O.W.
- TEMPORARY EASEMENT
- CONST. LIMITS
- CONCRETE ABUTMENT
- STREAM CENTERLINE
- GABION
- SLOPE MATTRESS
- OVERHEAD ELECTRIC
- TELEPHONE POLE
- AERIAL TELEPHONE
- POWER POLE

N

ILLINOIS DEPARTMENT OF TRANSPORTATION

R.O.W. PLAN  
S.N. 090-0058  
F.A.P. 701 (IL 122) OVER  
NORTH FORK SUGAR CREEK  
TAZEWELL COUNTY  
SHEET 2 OF 8

SCALE: 1" = 20'