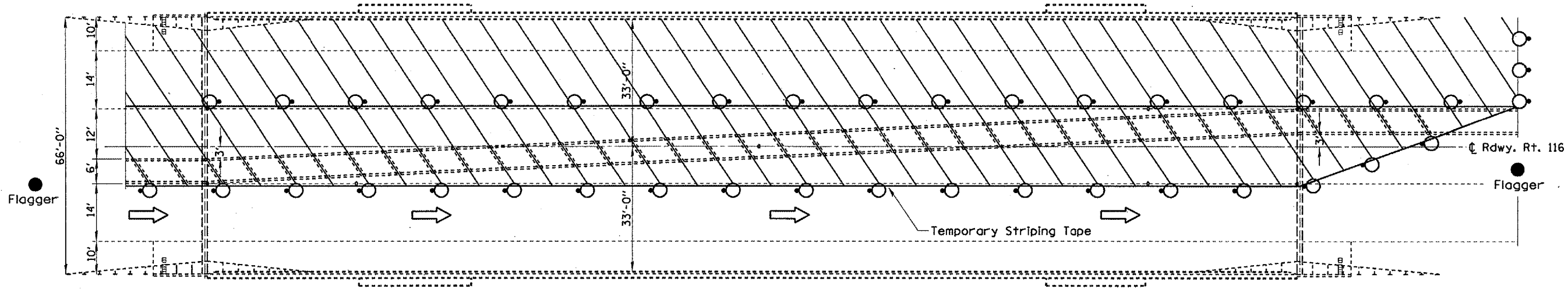
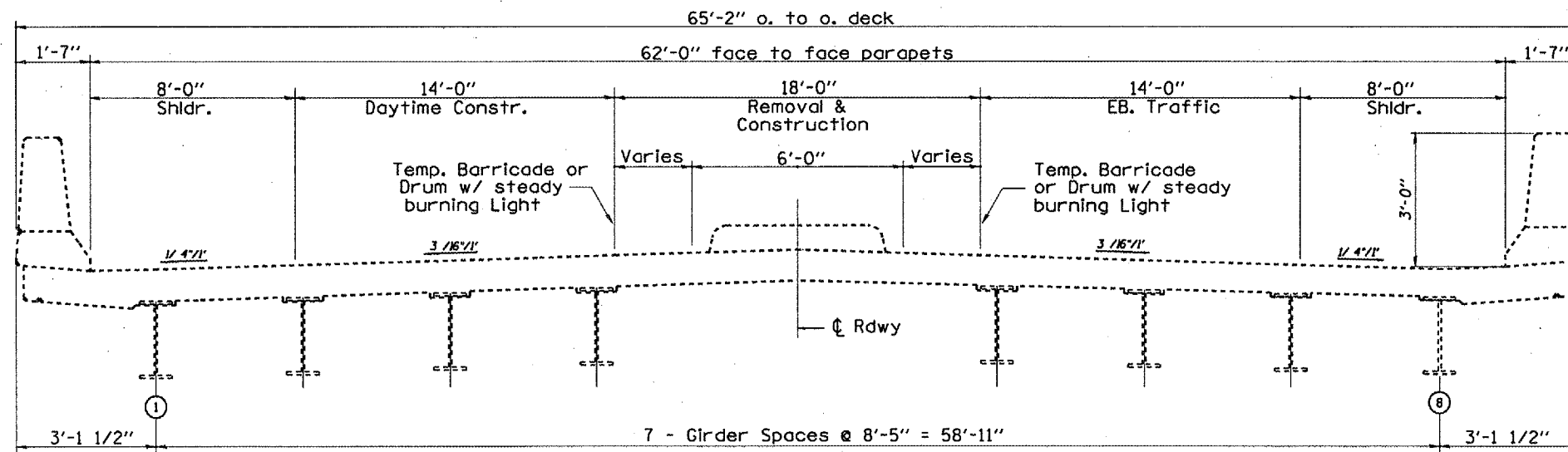


FAP 39	SECTION	COUNTY	TOTAL SHEETS	SHEET NO.
		WOODFORD	12	6
STA. 48+85.00		TO STA. 51+15.00		
FED. ROAD DIST. NO. 3 ILLINOIS FED. AID PROJECT				
- D4 CONC MEDIAN REPAIR 2007				



TRAFFIC & CONTROL PLAN



TRAFFIC & CONTROL (Looking EAST)

	Work Area
	Drum w/ steady burning light
	Temporary Striping
	Sign
	Arrow Board
	Type III Barricade w/Flashing Lights
	Flagger w/Traffic Control Sign

NOTES
 Refer to Highway Standards 701201 (daylight) and 701602 (night) for exact placement of traffic management devices and other clarifications as construction staging symbols and dimensioning were duplicated off of this standard. Reflectorized temporary pavement marking tape shall be placed along each side of the entire length of the median work area.

PLAT DATE
 FILE NAME
 PLOT NAME
 USER NAME

REVISIONS	
NAME	DATE

S.N. 102-0047 Sta. 969+09.65
 FAP. Rt. 412 CH 2 over I-39
 Woodford County

ILLINOIS DEPARTMENT OF TRANSPORTATION

TRAFFIC CONTROL

SCALE: VERT. HORIZ.
 DATE 12-12-2005

DRAWN BY CEJ
 CHECKED BY