

FAI	SECTION	COUNTY	TOTAL SHEETS	SHEET NO.
39		WOODFORD	12	1

• D4 CONC MEDIAN REPAIR 2006

STATE OF ILLINOIS  
DEPARTMENT OF TRANSPORTATION  
DIVISION OF HIGHWAYS

# PROPOSED HIGHWAY PLANS

FAI ROUTE 39 (I-39)  
D4 CONC. MEDIAN REPAIR 2006  
JOB NO. C-94-071-06  
WOODFORD COUNTY

D-94-061-06



**INDEX OF SHEETS:**

1. COVER SHEET
2. GENERAL NOTES
3. SUMMARY OF QUANTITIES
4. SCHEDULE OF QUANTITIES

**S.N.102-0047**

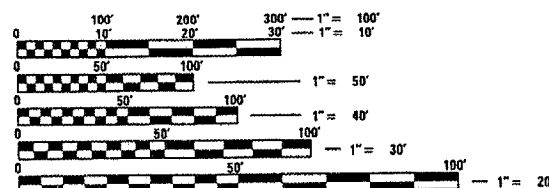
5. GENERAL PLAN & ELEVATION
6. TRAFFIC CONTROL
7. REMOVAL/REPLACEMENT DETAIL
8. SUPERSTRUCTURE DETAILS

**S.N.102-0049**

9. GENERAL PLAN & ELEVATION
10. TRAFFIC CONTROL
11. REMOVAL/REPLACEMENT DETAIL
12. SUPERSTRUCTURE DETAILS

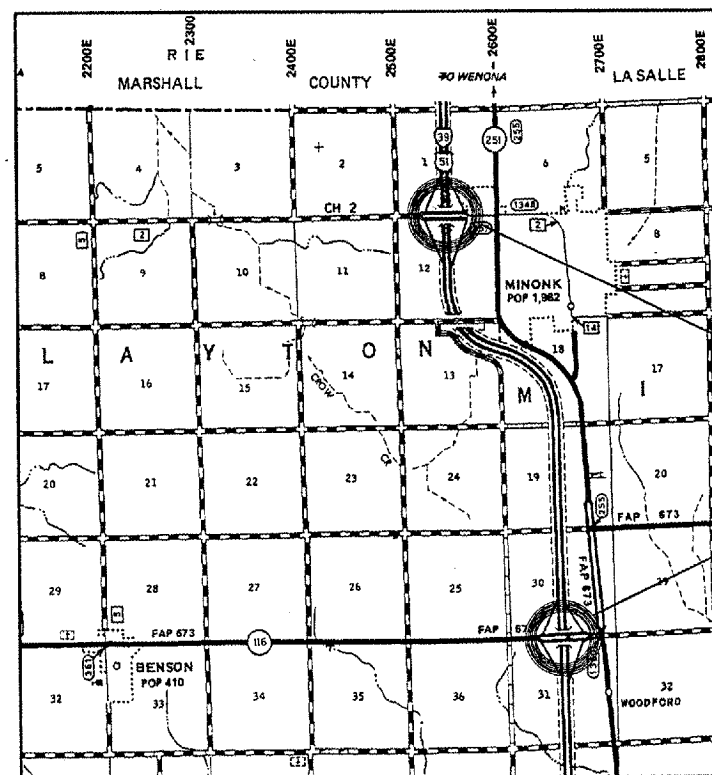
**STANDARDS:**

- 701001-01 701602-02  
701006-02 702001-06  
701201-02 704001-02



FULL SIZE PLANS HAVE BEEN PREPARED USING STANDARD ENGINEERING SCALES. REDUCED SIZED PLANS WILL NOT CONFORM TO STANDARD SCALES. IN MAKING MEASUREMENTS ON REDUCED PLANS, THE ABOVE SCALES MAY BE USED.

J.U.L.I.E.  
JOINT UTILITY LOCATION INFORMATION FOR EXCAVATION  
1-800-892-0123



LOCATION MAP

SN. 102-0047

SN. 102-0049

THE PROPOSED PROJECT INCLUDES REMOVAL & REPLACEMENT OF THE CONCRETE MEDIANS AND APPLICATION OF PROTECTIVE COAT ON STRUCTURES SN. 102-0047 (CH 2 OVER I-39), AND SN. 102-0049 (IL 116 OVER I-39).

STATE OF ILLINOIS  
DEPARTMENT OF TRANSPORTATION  
DIVISION OF HIGHWAYS

SUBMITTED FEB 10 20 06

[Signature]  
DEPUTY DIRECTOR OF HIGHWAYS, REGION ENGINEER

May 12 20 06  
Mike Hine  
ENGINEER OF DESIGN AND ENVIRONMENT

May 12 20 06  
Milton R. Sees PE  
DIRECTOR OF HIGHWAYS, CHIEF ENGINEER

PRINTED BY THE AUTHORITY  
OF THE STATE OF ILLINOIS

DESIGNER: CLARK JONES  
PHONE: (309) 671-3452

PROJECT ENGINEER: JIM MILLER  
PHONE: (309) 671-3451



FAY	SECTION	COUNTY	TOTAL SHEETS	SHEET NO.
39	.	WOODFORD	12	3
STA. VARIOUS		TO STA. VARIOUS		
FED. ROAD DIST. NO. 3		ILLINOIS FED. AID PROJECT		
• D4 CONC MEDIAN REPAIR 2006				

# SUMMARY OF QUANTITIES

100% STATE SFTY -2A  
WOODFORD COUNTY

CODE NO.	ITEM	UNIT	RURAL	TOTAL
50300255	CONCRETE SUPERSTRUCTURE	CU.YD.	43	43
50300300	PROTECTIVE COAT	SQ.YD.	3673	3673
50800205	REINFORCEMENT BARS, EPOXY COATED	POUND	3564	3564
67100100	MOBILIZATION	LSUM	1.0	1.0
70100450	TRAFFIC CONTROL AND PROTECTION, STANDARD 701201	LSUM	1.0	1.0
70102632	TRAFFIC CONTROL AND PROTECTION, STANDARD 701602	LSUM	1.0	1.0
70300320	PAVEMENT MARKING TAPE, TYPE I, 4"	FOOT	1404	1404
78200300	PRISMATIC CURB REFLECTOR	EACH	128	128
50102400	CONCRETE REMOVAL	CUYD	43	43

PLOT DATE \* DATE  
 FILE NAME \* FILENAME  
 PLOT SCALE \* SCALE  
 USER NAME \* USERNAME

REVISIONS	
NAME	DATE

ILLINOIS DEPARTMENT OF TRANSPORTATION

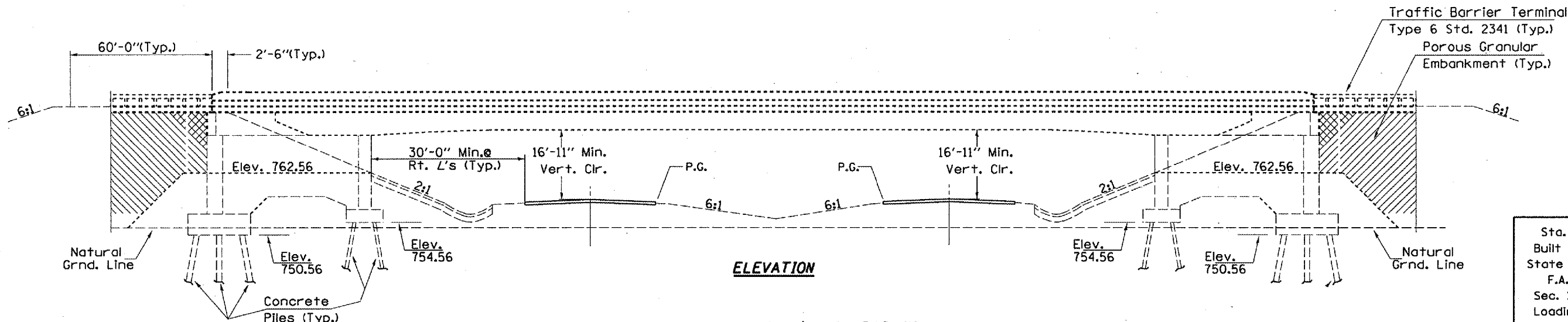
## SUMMARY OF QUANTITIES

SCALE: VERT.  
HORIZ.  
DATE 12-02-2005

DRAWN BY CEJ  
CHECKED BY



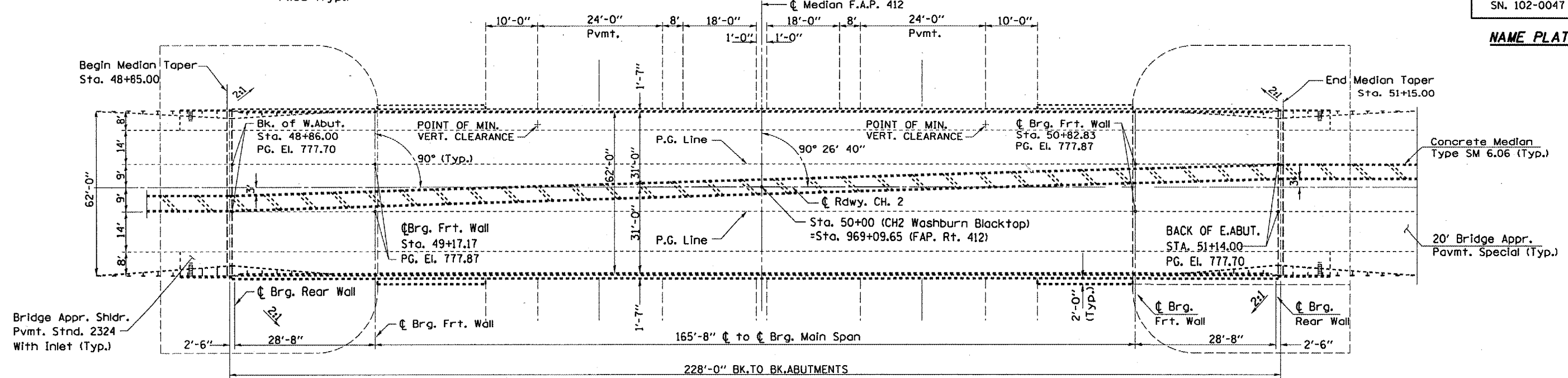
F.A.P.	SECTION	COUNTY	TOTAL SHEETS	SHEET NO.
39		WOODFORD	12	5
STA. 48+85.00		TO STA. 51+15.00		
FED. ROAD DIST. NO. 3 ILLINOIS FED. AID PROJECT				
D4 CONC MEDIAN REPAIR 2007				



**ELEVATION**

Sta. 50+00  
Built 19.. by  
State of Illinois  
F.A.P.412  
Sec. 102-4HB  
Loading HS20  
SN. 102-0047

**NAME PLATE**



**PLAN**

**TOTAL BILL OF MATERIAL**

ITEM	UNIT	QUANTITY
PAVEMENT MARKING TAPE, TYPE I, 4"	FOOT	700
CONCRETE REMOVAL	CU. YD.	21
REINFORCEMENT BARS, EPOXY COATED	POUNDS	2277
CONCRETE SUPERSTRUCTURE	CU. YD.	21
PRISMATIC CURB REFLECTOR	EACH	64
PROTECTIVE COAT	SQ. YD.	1778

**GENERAL NOTES:**

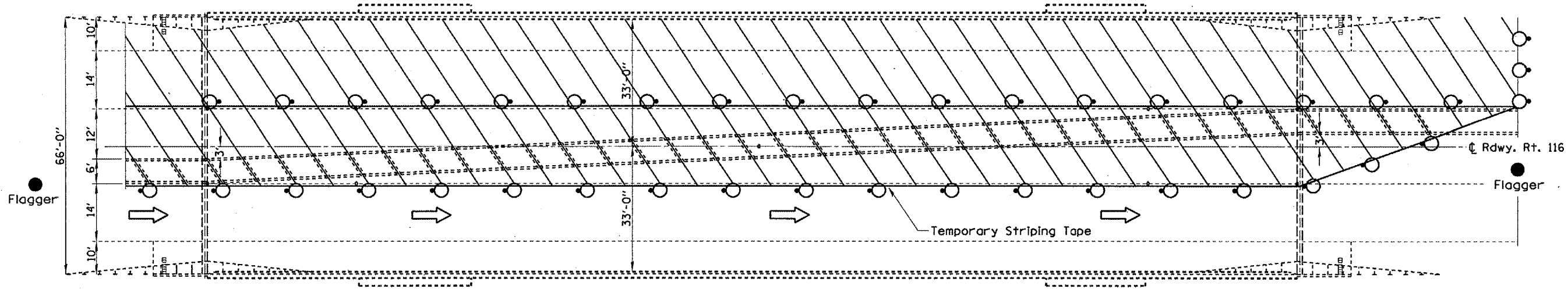
PLAN DIMENSIONS AND DETAILS RELATIVE TO EXISTING STRUCTURE HAVE BEEN TAKEN FROM EXISTING PLANS AND ARE SUBJECT TO NOMINAL CONSTRUCTION VARIATIONS. IT SHALL BE THE CONTRACTOR'S RESPONSIBILITY TO VERIFY SUCH DIMENSIONS AND DETAILS IN THE FIELD AND MAKE NECESSARY APPROVED ADJUSTMENTS PRIOR TO WORK OR THE ORDERING OF MATERIALS. SUCH VARIATIONS SHALL NOT BE CAUSE FOR ADDITIONAL COMPENSATION FOR A CHANGE IN THE SCOPE OF THE WORK. HOWEVER, THE CONTRACTOR WILL BE PAID FOR THE QUANTITY ACTUALLY FURNISHED AT THE UNIT PRICE BID FOR THE PROJECT.

REVISIONS	
NAME	DATE

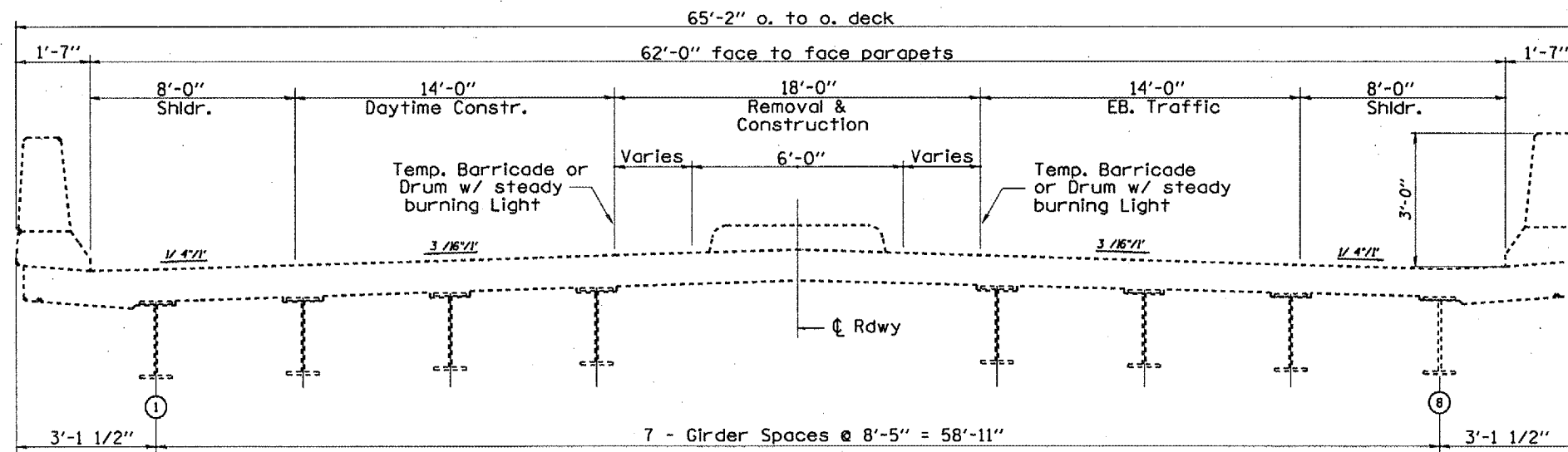
ILLINOIS DEPARTMENT OF TRANSPORTATION  
**PLAN AND ELEVATION**  
SCALE: VERT. HORIZ. DATE 12-08-2005 DRAWN BY CEJ CHECKED BY

PLDT DATE \* DATE \*  
FILE NAME \* FILE \*  
USER NAME \* USER \*  
USER NAME \* USER \*

FAP 39	SECTION	COUNTY	TOTAL SHEETS	SHEET NO.
		WOODFORD	12	6
STA. 48+85.00		TO STA. 51+15.00		
FED. ROAD DIST. NO. 3 ILLINOIS FED. AID PROJECT				
- D4 CONC MEDIAN REPAIR 2007				



**TRAFFIC & CONTROL PLAN**



**TRAFFIC & CONTROL (Looking EAST)**

	Work Area
	Drum w/ steady burning light
	Temporary Striping
	Sign
	Arrow Board
	Type III Barricade w/Flashing Lights
	Flagger w/Traffic Control Sign

**NOTES**  
 Refer to Highway Standards 701201 (daylight) and 701602 (night) for exact placement of traffic management devices and other clarifications as construction staging symbols and dimensioning were duplicated off of this standard. Reflectorized temporary pavement marking tape shall be placed along each side of the entire length of the median work area.

PLAT DATE  
 FILE NAME  
 PLOT NAME  
 USER NAME

REVISIONS	
NAME	DATE

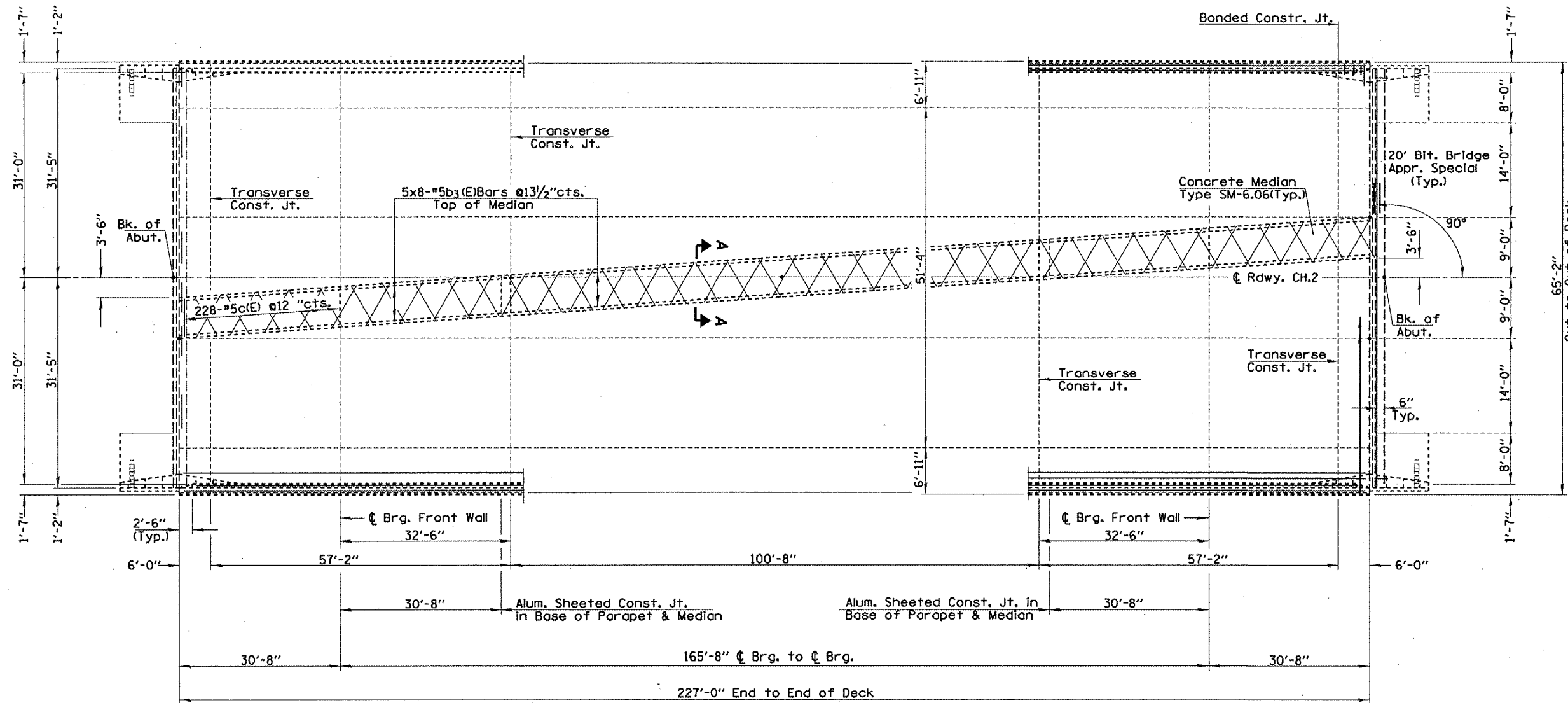
S.N. 102-0047 Sta. 969+09.65  
 FAP. Rt. 412 CH 2 over I-39  
 Woodford County

ILLINOIS DEPARTMENT OF TRANSPORTATION

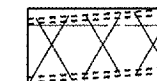
# TRAFFIC CONTROL

SCALE: VERT.      DRAWN BY CEJ  
 HORIZ.              CHECKED BY  
 DATE 12-12-2005

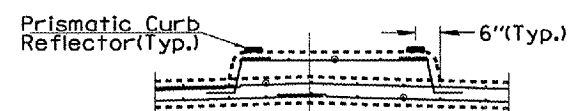
F.A.I.	SECTION	COUNTY	TOTAL SHEETS	SHEET NO.
34		WOODFORD	12	7
STA. 48+85.00		TO STA. 51+15.00		
FED. ROAD DIST. NO. 3		ILLINOIS FED. AID PROJECT		
D4 CONC MEDIAN REPAIR 2007				



**PLAN**



Hatched Median Area for Removal and Replacement  
Cost included with concrete removal.



**Reflector Placement**

**NOTE**

PRISMATIC CURB REFLECTORS SHALL BE REPLACED ON MEDIAN CURB TOP SURFACES FOR THE LENGTH OF THE DECK AT 15' INTERVALS AND 2' FROM MEDIAN CENTERLINE. THEY SHALL BE INSTALLED ACCORDING TO ARTICLE 782 OF THE STANDARD SPECIFICATIONS PRIOR TO SEALER APPLICATION. ADHESIVE COST SHALL BE INCLUDED WITH REFLECTOR INSTALLATION.

DATE  
PLOT NAME  
PLOT SCALE  
USER NAME

REVISIONS	
NAME	DATE

ILLINOIS DEPARTMENT OF TRANSPORTATION

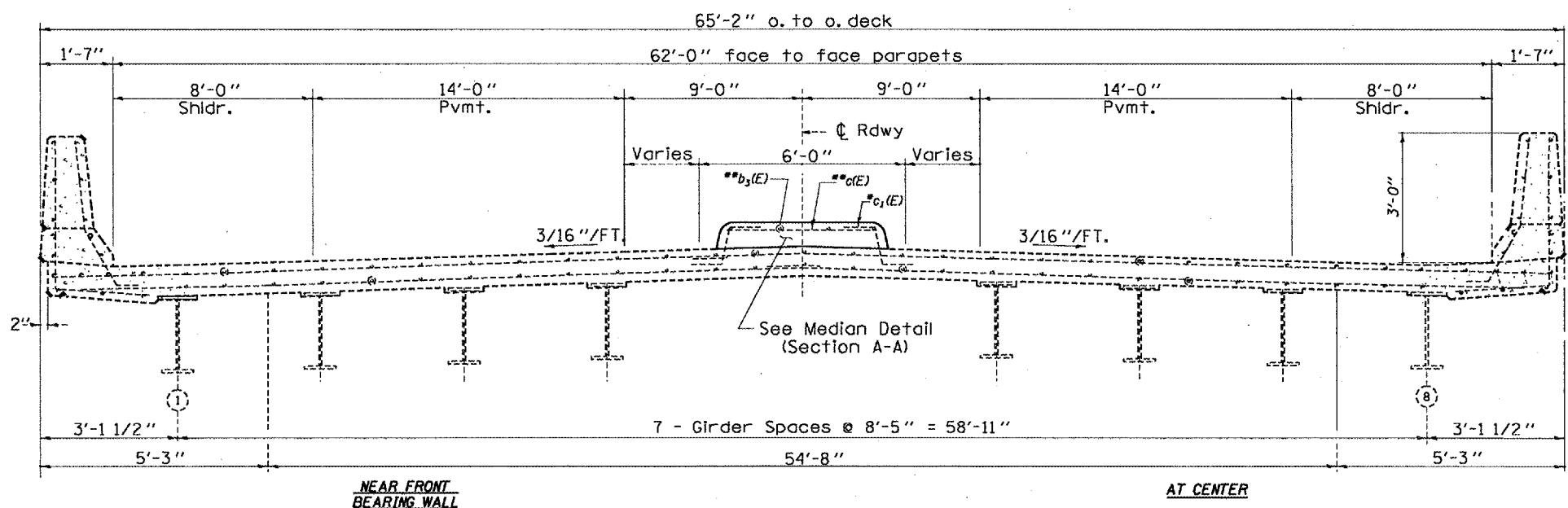
**REMOVAL AND REPLACEMENT PLAN**

SCALE: VERT. HORIZ. DATE 12-14-2005

DRAWN BY CEJ CHECKED BY

S.N. 102-0047 Sta. 969+09.65  
FAP. Rt. 412 CH 2 over I-39  
Woodford County

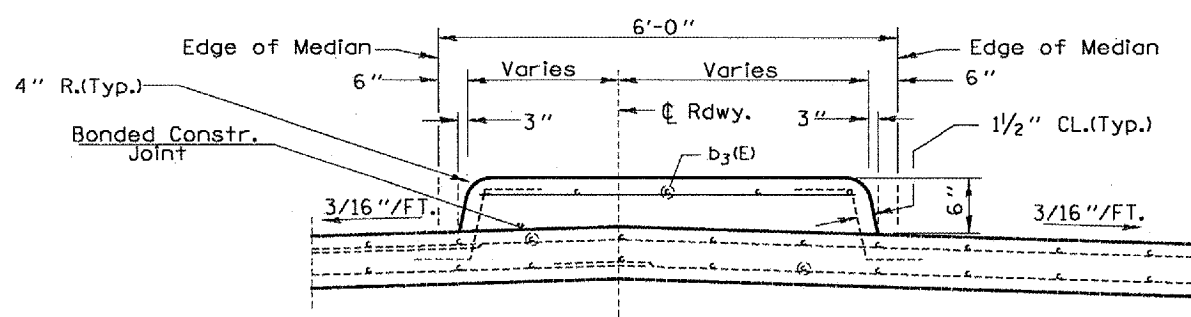
FBI	SECTION	COUNTY	TOTAL SHEETS	SHEET NO.
39		WOODFORD	12	8
STA. VARIOUS		TO STA. VARIOUS		
FED. ROAD DIST. NO. 4 ILLINOIS FED. AID PROJECT				
D4 CONC MEDIAN REPAIR 2007				



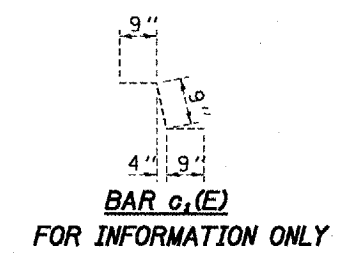
**EXISTING CROSS SECTION**  
(Looking EAST)

\*Existing Reinforcement to Remain, be Cleaned, and Straightened  
\*\*Existing Reinforcement to be Replaced

**MIN. BAR LAP**  
#5 - 2'-2"



**SECTION A-A**



**SUPERSTRUCTURE BILL OF MATERIAL**

Bar	No.	Size	Length	Shape
b <sub>3</sub> (E)	40	#5	30'-4"	---
c <sub>1</sub> (E)	228	#5	4'-3"	---
Reinforcement Bars, Epoxy Coated			Pound	2277
Concrete Superstructure			CU.YD.	21

Notes  
Reinforcement bars designated (E) shall be epoxy coated. See special provisions.  
Existing median anchor reinforcement to be cleaned, straightened and incorporated into new construction.

PLT DATE = 08/15/05  
PLT SCALE = AS SHOWN  
USER NAME = MURPHY

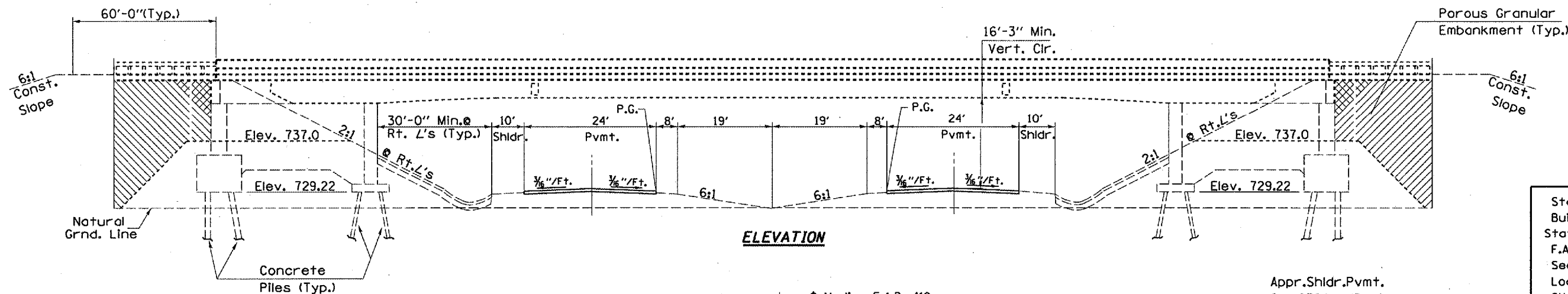
REVISIONS	
NAME	DATE

ILLINOIS DEPARTMENT OF TRANSPORTATION  
**SUPERSTRUCTURE DETAILS**  
SCALE: VERT. HORIZ.  
DATE 12-02-2005  
DRAWN BY CEJ  
CHECKED BY

S.N. 102-0047 Sta. 969+09.65  
FAP. Rt. 412 CH 2 over I-39  
Woodford County



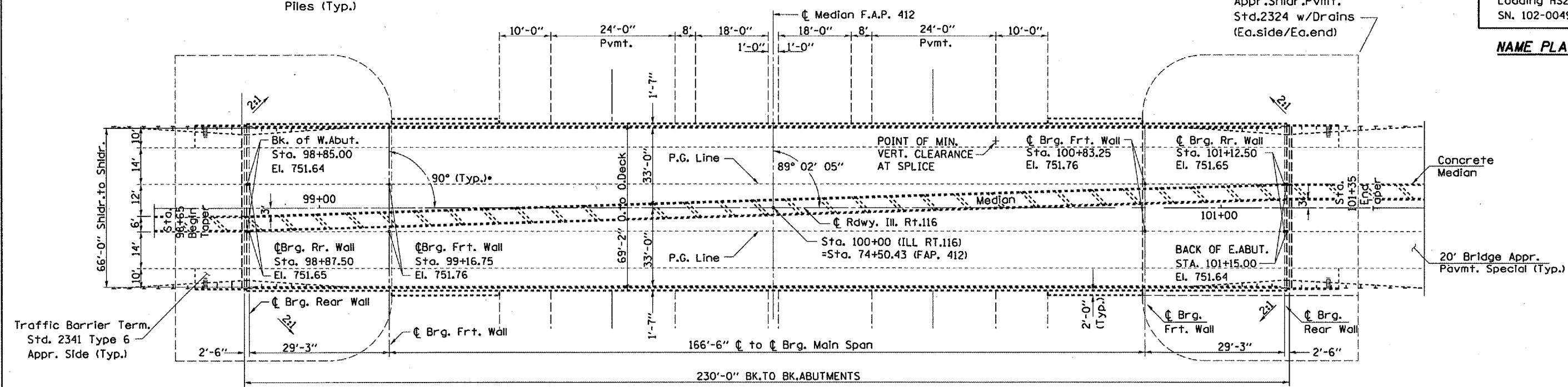
FAT	SECTION	COUNTY	TOTAL SHEET NO.
39		WOODFORD	12 9
STA. 98+85.00		TO STA. 101+15.00	
FED. ROAD DIST. NO. 4 ILLINOIS FED. AID PROJECT			
D4 CONC MEDIAN REPAIR 2007			



**ELEVATION**

Sta. 74+50.43  
 Built 19... by  
 State of Illinois  
 F.A.P.412  
 Sec. 102-3HB-2  
 Loading HS20  
 SN. 102-0049

**NAME PLATE**



**PLAN**

**TOTAL BILL OF MATERIAL**

ITEM	UNIT	QUANTITY
PAVEMENT MARKING TAPE, TYPE I, 4"	FOOT	704
CONCRETE REMOVAL	CY. YD	22
REINFORCEMENT BARS, EPOXY COATED	POUNDS	1287
CONCRETE SUPERSTRUCTURE	CU. YD.	22
PRISMATIC CURB REFLECTOR	EACH	64
PROTECTIVE COAT	SQ. YD.	1895

**GENERAL NOTES:**

PLAN DIMENSIONS AND DETAILS RELATIVE TO EXISTING STRUCTURE HAVE BEEN TAKEN FROM EXISTING PLANS AND ARE SUBJECT TO NOMINAL CONSTRUCTION VARIATIONS. IT SHALL BE THE CONTRACTOR'S RESPONSIBILITY TO VERIFY SUCH DIMENSIONS AND DETAILS IN THE FIELD AND MAKE NECESSARY APPROVED ADJUSTMENTS PRIOR TO WORK OR THE ORDERING OF MATERIALS. SUCH VARIATIONS SHALL NOT BE CAUSE FOR ADDITIONAL COMPENSATION FOR A CHANGE IN THE SCOPE OF THE WORK. HOWEVER, THE CONTRACTOR WILL BE PAID FOR THE QUANTITY ACTUALLY FURNISHED AT THE UNIT PRICE BID FOR THE PROJECT.

REVISIONS	
NAME	DATE

ILLINOIS DEPARTMENT OF TRANSPORTATION

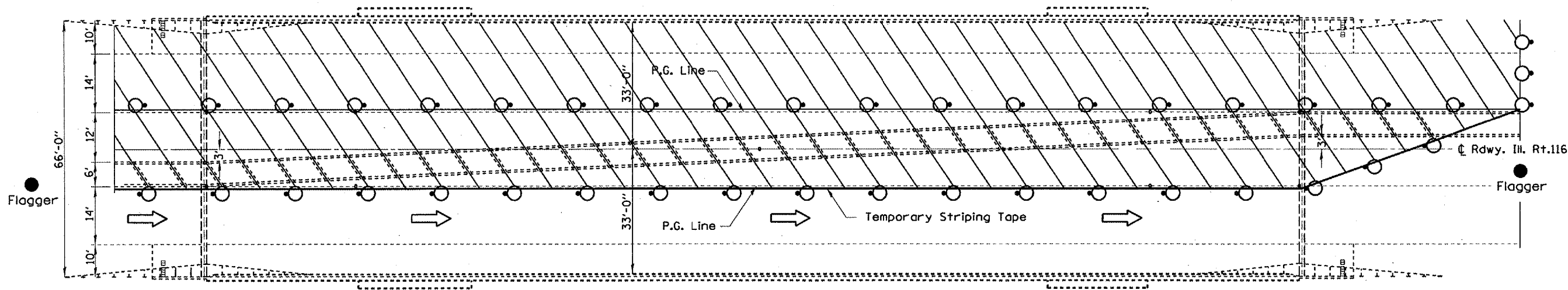
**PLAN AND ELEVATION**

SCALE: VERT. HORIZ. DATE 12-21-2005 DRAWN BY CEJ CHECKED BY

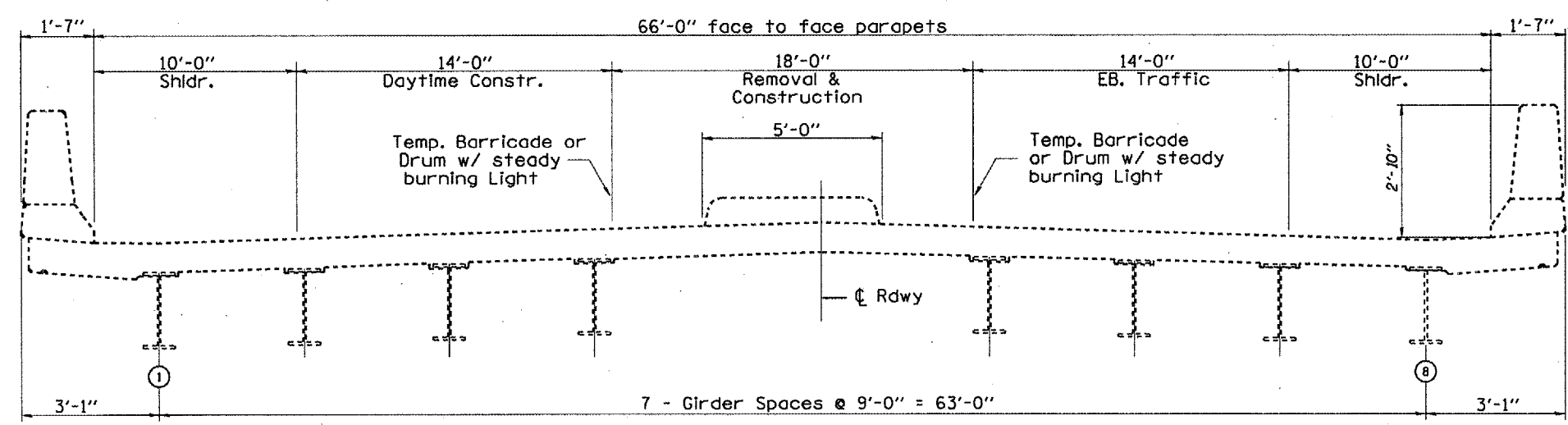
S.N. 102-0049  
 Rt.116 over I-39  
 Woodford County

SCALE  
 FILE NAME  
 PLOT SCALE  
 USER NAME

FAS	SECTION	COUNTY	TOTAL SHEETS	SHEET NO.
39		WOODFORD	12	10
STA. 98+85.00		TO STA. 101+15.00		
FED. ROAD DIST. NO. 5 ILLINOIS FED. AID PROJECT				
• 04 CONC MEDIAN REPAIR 2007				



**TRAFFIC & CONTROL PLAN**



**TRAFFIC & CONTROL (Looking EAST)**

	Work Area
	Drum w/ steady burning light
	Temporary Striping
	Sign
	Arrow Board
	Type III Barricade w/Flashing Lights
	Flagger w/Traffic Control Sign

**NOTES**  
 Refer to Highway Standards 701201 (daylight) and 701602 (night) for exact placement of traffic management devices and other clarifications as construction staging symbols and dimensioning were duplicated off of this standard. ReflectORIZED temporary pavement marking tape shall be placed along each side of the entire length of the median work area.

PLT DATE • DWG DATE  
 PLOT SCALE • USER NAME

REVISIONS	
NAME	DATE

S.N. 102-0049  
 Rt.116 over I-39  
 Woodford County

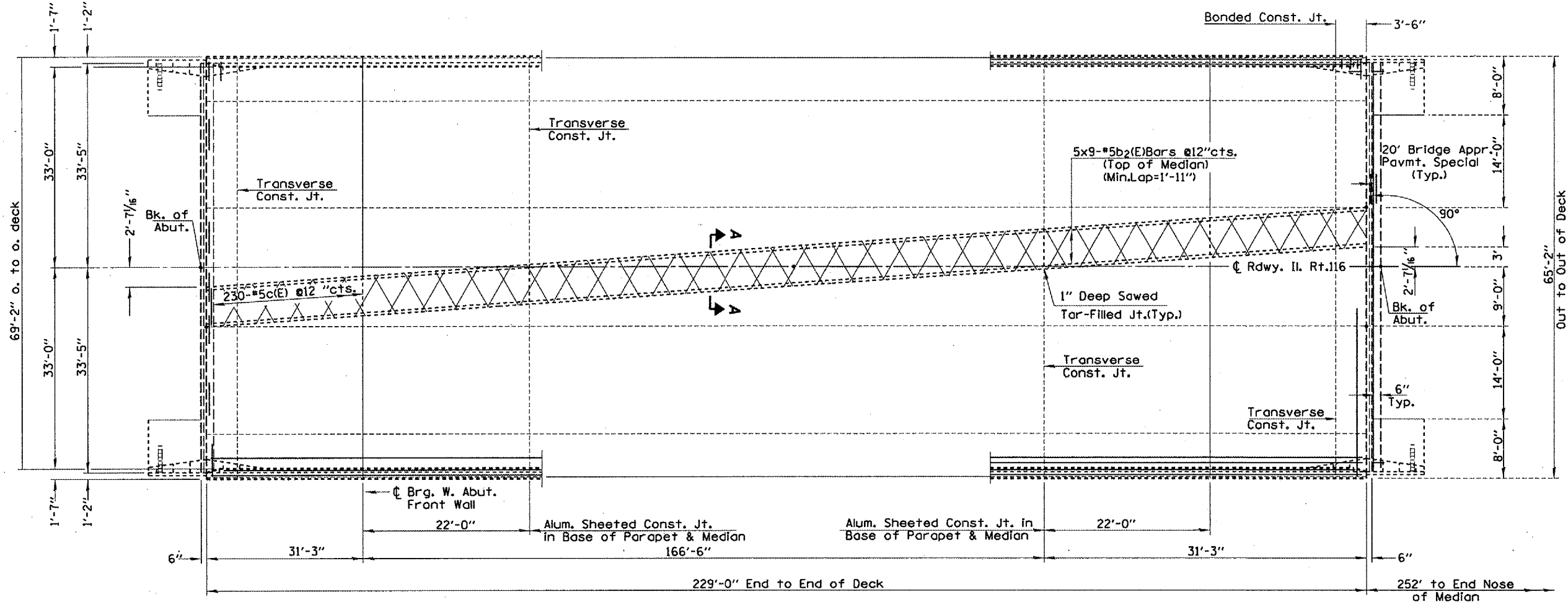
ILLINOIS DEPARTMENT OF TRANSPORTATION

**TRAFFIC CONTROL**

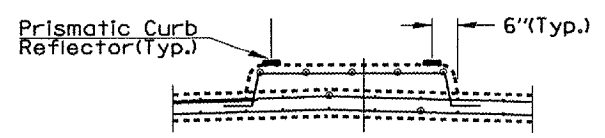
SCALE: VERT. \_\_\_\_\_  
 HORIZ. \_\_\_\_\_  
 DATE 12-12-2005

DRAWN BY CEJ  
 CHECKED BY \_\_\_\_\_

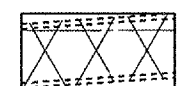
FBI	SECTION	COUNTY	TOTAL SHEETS	SHEET NO.
39		WOODFORD	12	11
STA. 98+85.00		TO STA. 101+15.00		
FED. ROAD DIST. NO. 4		ILLINOIS FED. AID PROJECT		
• D4 CONC MEDIAN REPAIR 2007				



**PLAN**



**Reflector Placement**

 Hatched Median Area for Removal and Replacement  
 Cast included with Concrete Removal

**NOTE**  
 PRISMATIC CURB REFLECTORS SHALL BE REPLACED ON MEDIAN CURB TOP SURFACES FOR THE LENGTH OF THE DECK AT 15' INTERVALS AND 2' FROM MEDIAN CENTERLINE. THEY SHALL BE INSTALLED ACCORDING TO ARTICLE 782 OF THE STANDARD SPECIFICATIONS PRIOR TO SEALER APPLICATION. ADHESIVE COST SHALL BE INCIDENTAL TO REFLECTOR INSTALLATION.

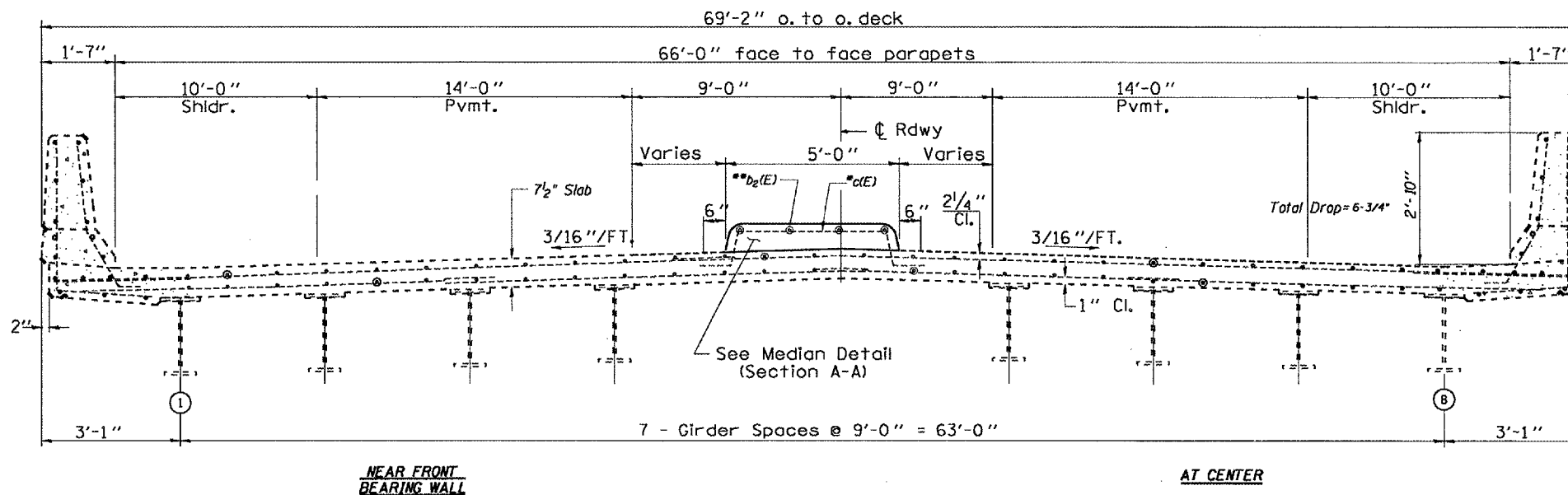
PLOT DATE  
 USER NAME  
 PLOT SCALE  
 USER NAME

REVISIONS	
NAME	DATE

ILLINOIS DEPARTMENT OF TRANSPORTATION  
**REMOVAL AND REPLACEMENT PLAN**  
 SCALE: VERT.    DRAWN BY CEJ  
 HORIZ.        CHECKED BY  
 DATE 01-09-2006

S.N. 102-0049  
 Rt.116 over I-39  
 Woodford County

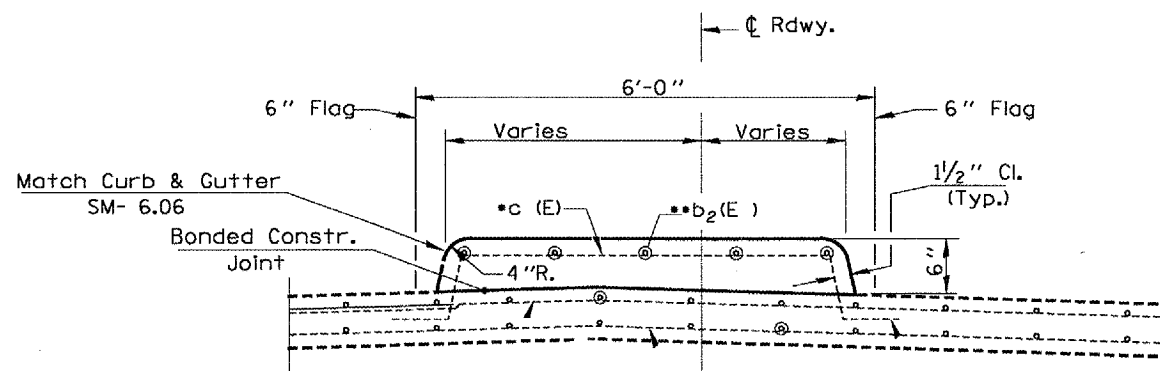
SECTION	COUNTY	TOTAL SHEETS	SHEET NO.
39	WOODFORD	12	12
STA. 98+85.00 TO STA. 101+15.00		FED. ROAD DIST. NO. 4 ILLINOIS FED. AID PROJECT	
D4 CONC MEDIAN REPAIR 2007			



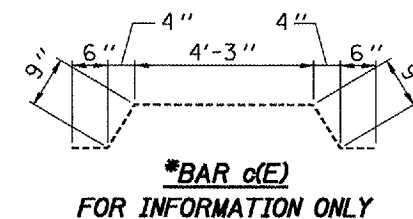
**MIN. BAR LAP**  
#5 - 2'-2"

**EXISTING CROSS SECTION**  
(Looking EAST)

\*Existing Reinforcement to Remain,  
be Cleaned, and Straightened  
\*\*Existing Reinforcement to be  
Replaced



**SECTION A-A**



**SUPERSTRUCTURE  
BILL OF MATERIAL**

Bar	No.	Size	Length	Shape
b <sub>2</sub> (E)	45	#5	27'-5"	
Reinforcement Bars, Epoxy Coated			Pound	1287
Concrete Superstructure			Cu. Yds.	22

Notes  
Reinforcement bars designated (E) shall be epoxy coated.  
See special provisions.  
Existing median anchor reinforcement to be cleaned,  
straightened and incorporated into new construction.  
Only lineal median reinforcement bars are calculated to  
be replaced.

PLOT DATE = 02/15/05  
PLOT NAME = 021505  
PLOT SCALE = 1/8"=1'-0"  
USER NAME = BUREAU

REVISIONS	
NAME	DATE

ILLINOIS DEPARTMENT OF TRANSPORTATION

**SUPERSTRUCTURE  
DETAILS**

SCALE: VERT.  
HORIZ.  
DATE 12-02-2005

DRAWN BY CEJ  
CHECKED BY

S.N. 102-0049  
Rt.116 over I-39  
Woodford County