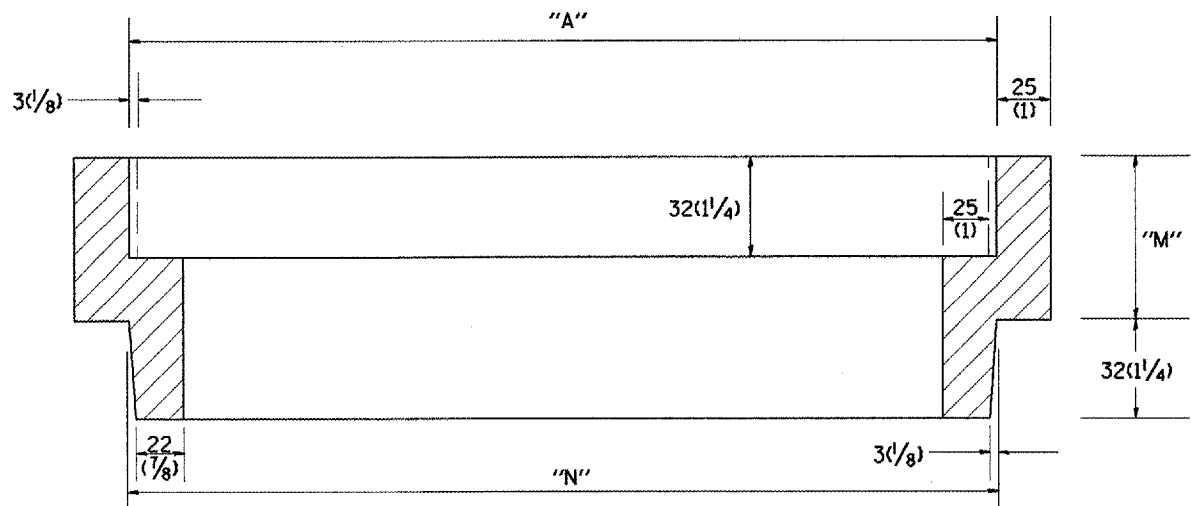
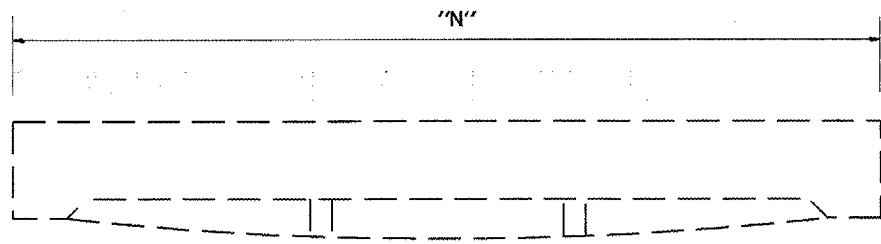


F.A. RTE.	SECTION	COUNTY	TOTAL SHEETS	SHEET NO.
646	(103-IN-5-TS	PEDRIA		29
STA. TO STA.			FED. ROAD DIST. NO. ILLINOIS FED. AID PROJECT	



Station	Dimension millimeters (Inches)			Quantity
	"A"	"N"	"M"	
Total				

General Notes:
 1. Article 603.08 shall apply

All dimensions are in millimeters (Inches) unless otherwise noted.

ILLINOIS DEPARTMENT OF TRANSPORTATION
 SPECIAL DETAIL SHEET

**FRAME & GRATE
 ADJUSTING RING**

CADD STD# 604201-04
 SCALE NOT TO SCALE
 DRAWN BY: CADD
 CHECKED BY: T. PICKERING

DATE	REVISIONS	BY
1-1-97	RENUM. B-6.01, NEW REVISION BOX	T.P.

\$\$\$DATE\$\$\$

DGN-ONLY