

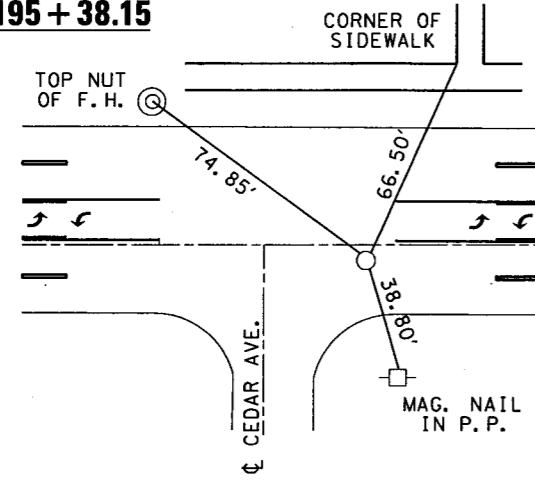
**TIE POINT LAYOUT**

CONTRACT NO. 70119

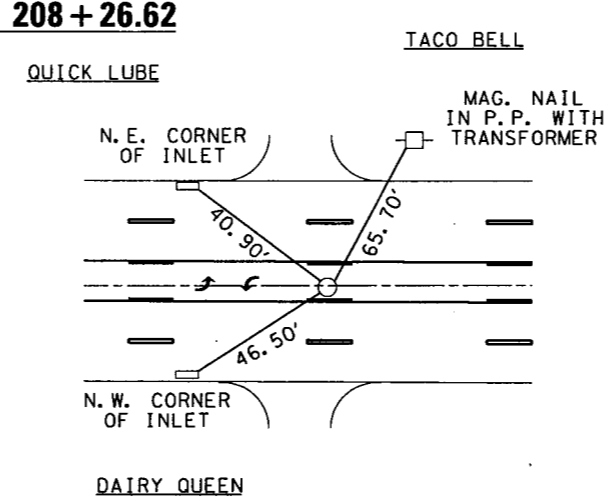
F.A.P. RTE.	SECTION	COUNTY	TOTAL SHEETS	SHEET NO.
332		VERMILION	30	13
STA.		TO STA.		
FED. ROAD DIST. NO.		ILLINOIS FED. AID PROJECT		

(RX,48Z-1)RS-1 & (47R-1)RS  
**FIRST MIDWEST BANK**

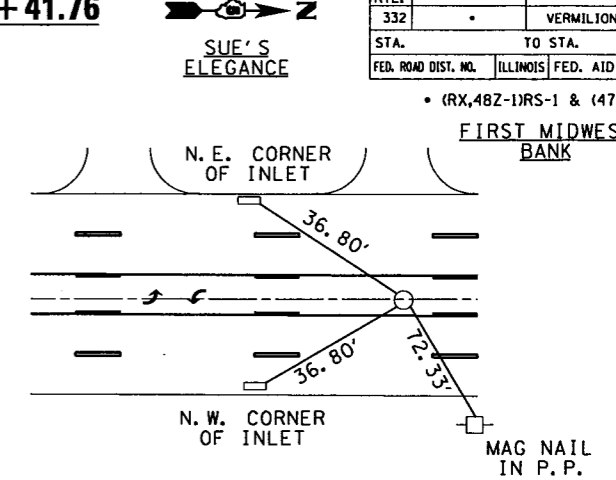
**P.O.T. #7 195+38.15**



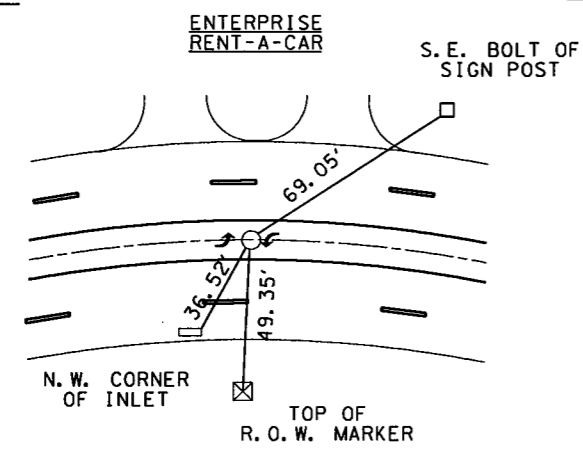
**P.O.T. #8 208+26.62**



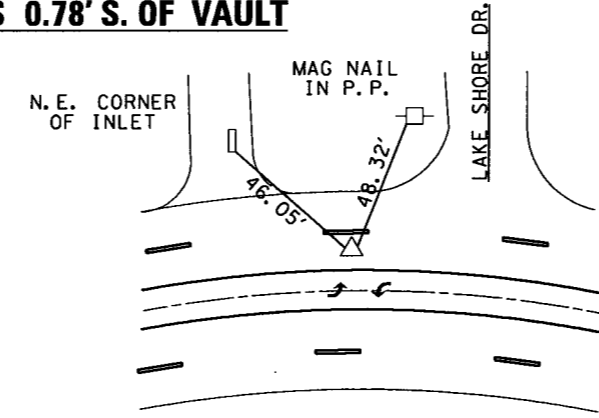
**P.O.T. #20 215+41.76**



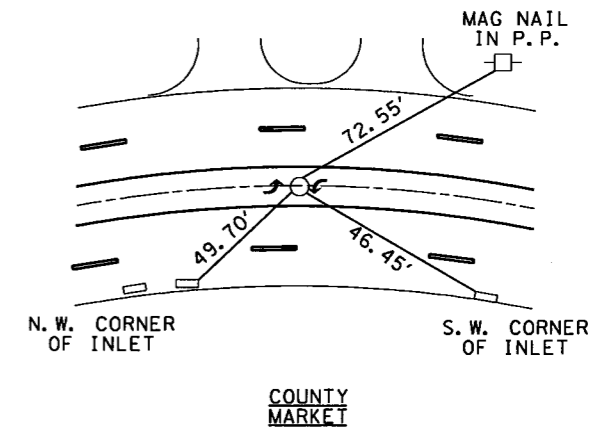
**P.C. 218+21.96**



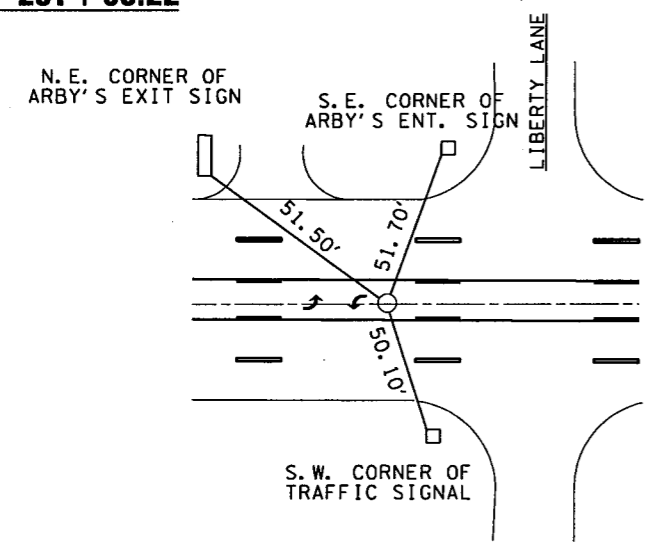
**P.I. #50 223+61.96, -24.29**  
**P.I. IS 0.78' S. OF VAULT**



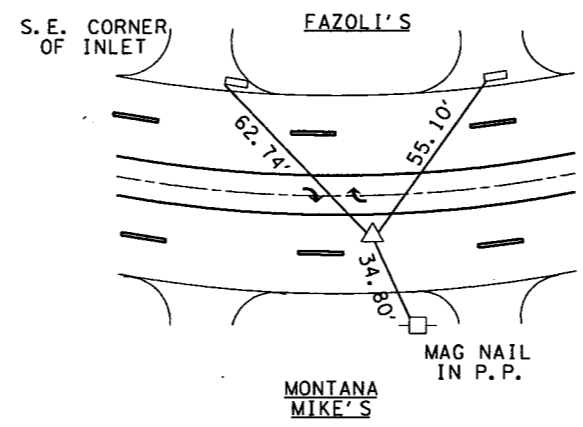
**P.T. 228+99.05**



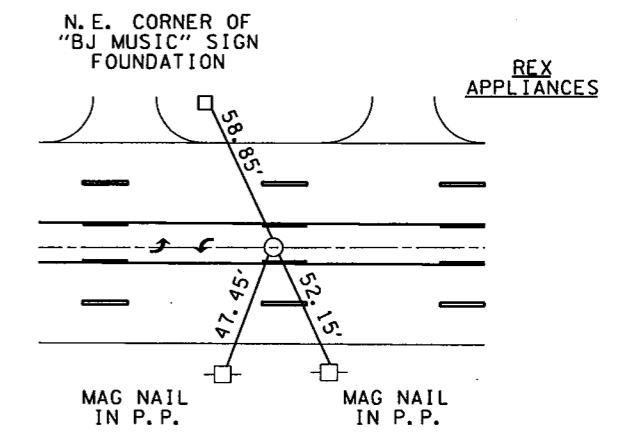
**P.C. 231+63.22**



**P.I. #25 235+63.22, 13.32 RT**



**P.T. 239+62.04**



PLOT DATE: 3/24/2006  
 FILE NAME: c:\projects\4050198\101\tdetails.dgn  
 PLOT SCALE: 4:3200 = 1" IN.  
 USER: NAME: gerrault