

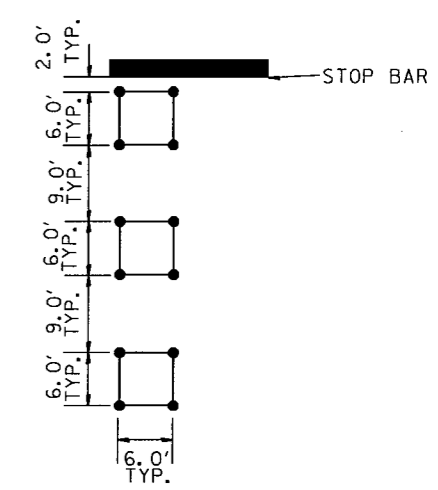
F.A.P. RTE.	SECTION	COUNTY	TOTAL SHEETS	SHEET NO.
332	*	VERMILION	30	23
STA. 229+00		TO STA. 235+00		
FED. ROAD DIST. NO.		ILLINOIS FED. AID PROJECT		
*IRX,48Z-1RS-1 & 147R-1RS				

TYPICAL PAVEMENT MARKING LEGEND

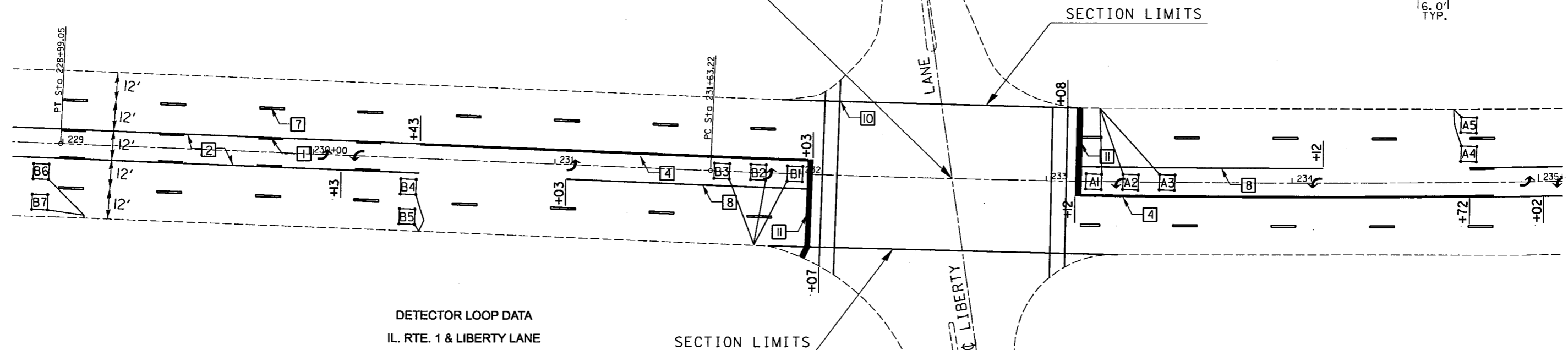
- 1 4" (100) SKIP-DASH (YELLOW)
- 2 4" (100) SOLID (YELLOW)
- 4 4" (100) DOUBLE YELLOW (NARROW)
- 7 4" (100) SKIP-DASH (WHITE)
- 8 4" (100) SOLID (WHITE)
- 10 6" (150) CROSS WALK (WHITE)
- 11 24" (600) STOP BAR (WHITE)



DETECTOR LOOP LAYOUT



STA. 232+61.97 (US 136) =
STA. 1102+00.00 (LIBERTY LANE)

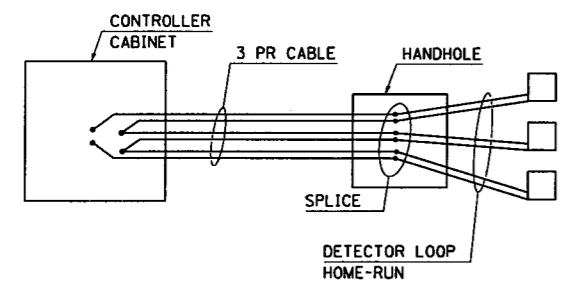


DETECTOR LOOP DATA
IL. RTE. 1 & LIBERTY LANE

LOOP	SIZE	TURNS
A1-3	6' X 6'	4
A4-5	6' X 6'	5
A6-7	6' X 6'	6
B1-3	6' X 6'	4
B4-5	6' X 6'	4
B6-7	6' X 6'	5

DETAIL OF DETECTOR LOOP WIRING

WIRED IN SERIES WITH MULTI-PAIR CABLE



The existing detector loop lead-in cable is:
No. 18, 3pr., Lead-In

NOTE: ALL ADVANCE LOOPS SHALL BE REPLACED PER EXISTING LOCATION UNLESS OTHERWISE NOTED.

REVISIONS		ILLINOIS DEPARTMENT OF TRANSPORTATION
NAME	DATE	
		PAVEMENT MARKING & DETECTOR LOOP PLANS
SCALE:	VERT. HORIZ.	DRAWN BY
DATE		CHECKED BY

PLOT DATE = 3/25/2008
 FILE NAME = c:\projects\70119\70119pavement\70119pavement.dwg
 USER NAME = carrollj