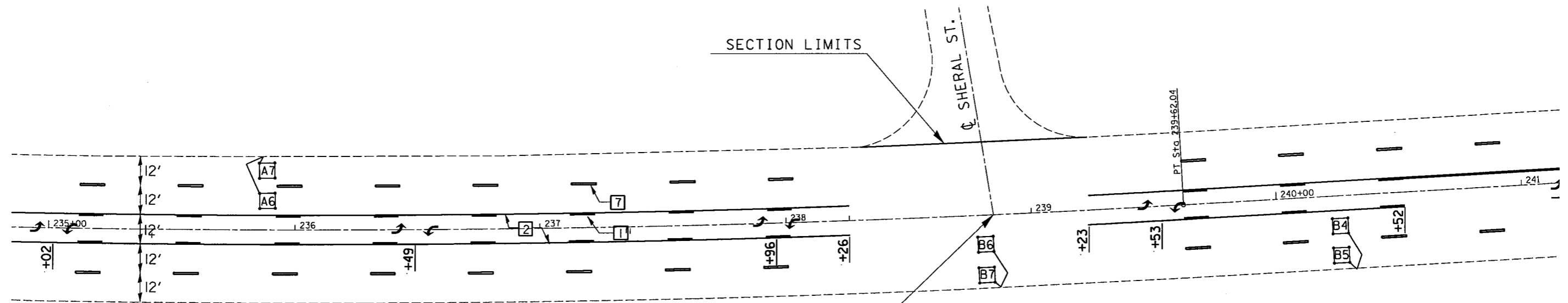
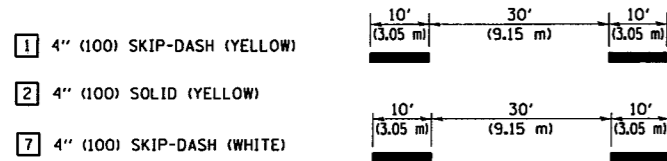


F.A.P. RTE.	SECTION	COUNTY	TOTAL SHEETS	SHEET NO.
332	*	VERMILION	30	24
STA. 235+00		TO STA. 241+00		
FED. ROAD DIST. NO.		ILLINOIS FED. AID PROJECT		
*(RX,482-1)RS-1 & (47R-1)RS				

CURVE 25  
 P.I. STA= 235+63.22  
 $\Delta$ = 7° 37' 47.38"  
 D= 0° 57' 18.50"  
 R= 5,998.68  
 T= 400.00  
 L= 798.82  
 E= 13.32  
 $\theta$ =  
 T.R.=  
 S.E. RUN=  
 P.C. STA= 231+63.22  
 P.T. STA= 239+62.04

TYPICAL PAVEMENT MARKING LEGEND



NOTE: ALL ADVANCE LOOPS SHALL BE REPLACED PER EXISTING LOCATION UNLESS OTHERWISE NOTED.

STA. 238+84.66 (US 136) =  
 STA. 1202+00.00 (SHERAL ST.)

DETECTOR LOOP DATA  
 IL. RTE. 1 & LIBERTY LANE

LOOP	SIZE	TURNS
A1-3	6' X 6'	4
A4-5	6' X 6'	5
A6-7	6' X 6'	6
B1-3	6' X 6'	4
B4-5	6' X 6'	4
B6-7	6' X 6'	5

The existing detector loop lead-in cable is:

No. 18, 3pr., Lead-In

DETECTOR LOOP DATA  
 IL. RTE. 1 & SHADY LANE

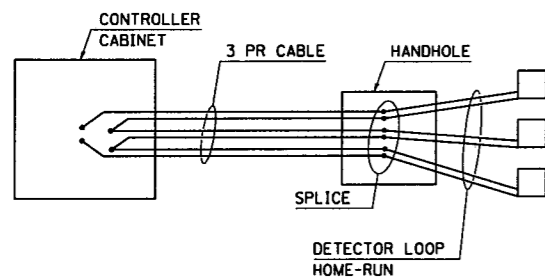
LOOP	SIZE	TURNS
A1-3	6' X 6'	3
A4-5	6' X 6'	4
A6-7	6' X 6'	5
B1-3	6' X 6'	3
B4-5	6' X 6'	3
B6-7	6' X 6'	4

The existing detector loop lead-in cable is:

No. 14 2/C, Twisted Shielded

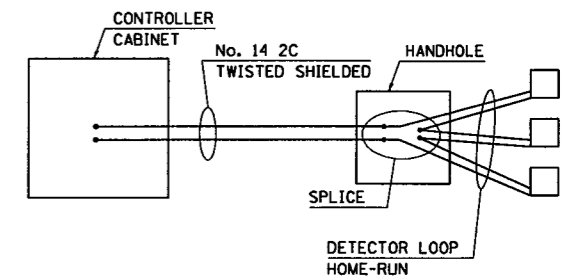
DETAIL OF DETECTOR LOOP WIRING

WIRED IN SERIES WITH MULTI-PAIR CABLE



DETAIL OF DETECTOR LOOP WIRING

WIRED IN SERIES WITH SINGLE PAIR CABLE



REVISIONS	
NAME	DATE

ILLINOIS DEPARTMENT OF TRANSPORTATION

PAVEMENT MARKING &  
 DETECTOR LOOP PLANS

SCALE: VERT.  
 HORIZ.  
 DATE

DRAWN BY  
 CHECKED BY