

F.A.P. RTE.	SECTION	COUNTY	TOTAL SHEETS	SHEET NO.
749	*	EDGAR	75	24
STA. 749		TO STA. 750		
FED. ROAD DIST. NO.	ILLINOIS	FED. AID PROJECT		

CONTRACT NO. 70134
 • 14RS-2, 122RS-3 & (123NRS,14)BR

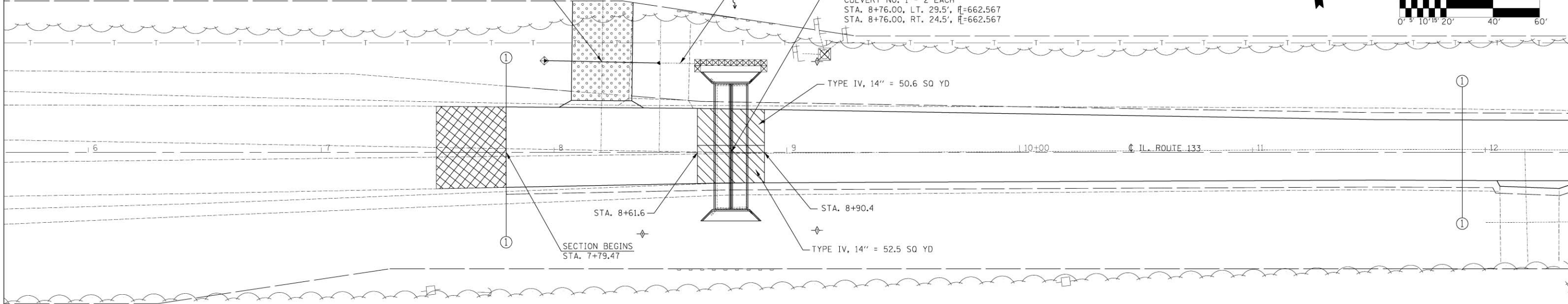
1"=20'

PIPE CULVERTS, CLASS D, TYPE I, 15" x 46.7'
 WITH END SECTIONS 15" - 2 EACH
 39.4' LT. STA. 7+97.3, U.S.F.L. = 663.13
 38.3' LT. STA. 8+44.0, D.S.F.L. = 662.80

REMOVE EXISTING CULVERT - 1 EACH
 CMP 15" X 32.5', NO HEADWALLS

REMOVE EXISTING STRUCTURE NO. 1
 EXISTING S.N. 023-8302
 STATION 8+76.00
 R.C. BOX CULVERT 2 @ 6' x 2'

STA. 8+76.00, PROPOSED S.N. 023-8313
 PRECAST BOX CULVERT 2 @ 6' x 2' x 54' (M273)
 WITH BOX CULVERT END SECTIONS
 CULVERT NO. 1 - 2 EACH
 STA. 8+76.00, LT. 29.5', \bar{E} =662.567
 STA. 8+76.00, RT. 24.5', \bar{E} =662.567



PLAN	SURVEYED	BY	DATE
	PLOTTED		
	CHECKED		
	BY		
	NO. OF WAY CHECKED		
	NO.		

BENCHMARK 4399-2
 A CHISELED SQUARE ON THE NORTH EAST
 CORNER OF THE SOUTH HEADWALL OF
 STRUCTURE NUMBER 023-8302
 ELEVATION = 665.76

TEMPORARY DITCH CHECKS	STATION	EACH
	8+38 RT	1
	9+13 LT	1
	9+13 RT	1

INLET AND PIPE PROTECTION	STATION	EACH
	7+97 39' LT	1
	8+76 35' LT	1
	9+16 42' LT	1

PERIMETER EROSION BARRIER	STATION	TO STATION	LENGTH
	8+53 61' LT	8+97 55' LT	44'
	8+53 50' RT	8+97 50' RT	44'

- CLASS D PATCHING
- BITUMINOUS SURFACE REMOVAL - BUTT JOINT
- AGGREGATE SURFACE COURSE, TYPE B

PROFILE	SURVEYED	BY	DATE
	PLOTTED		
	CHECKED		
	BY		
	NO. OF WAY CHECKED		
	NO.		

