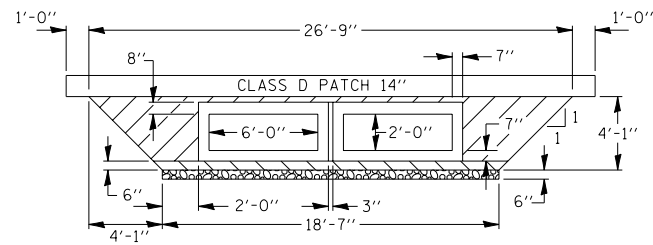


DETAIL OF POROUS GRANULAR BACKFILL AT A.R. CULVERTS

F.A.P. RTE.	SECTION	COUNTY	TOTAL SHEETS	SHEET NO.
749	•	EDGAR	75	38

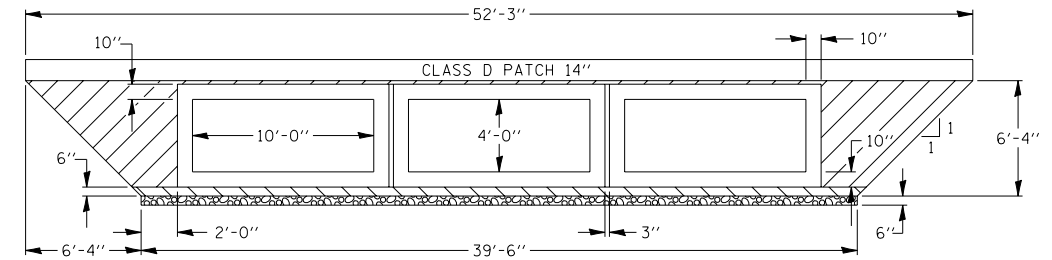
CONTRACT NO. 70474
 • 123NRS(BR);14BR);14S(BR);14BR

BOX CULVERT NO. 1
 STA. 8+76



- PAY LIMITS OF POROUS GRANULAR BACKFILL = 71.1 CU. YD.
- POROUS GRANULAR MATERIAL INCLUDED IN PAY ITEM FOR BOX CULVERT
- RIPRAP (SPECIAL)

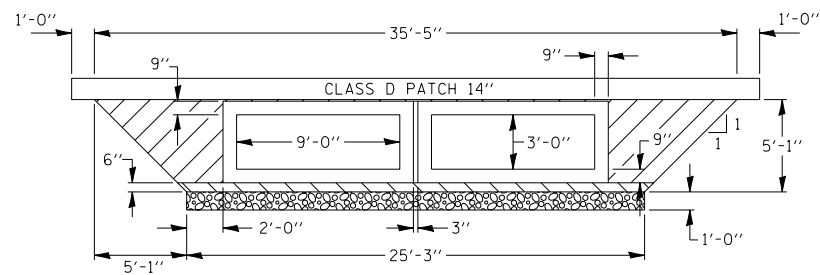
BOX CULVERT NO. 2
 STA. 280+24



- PAY LIMITS OF POROUS GRANULAR BACKFILL = 163.7 CU. YD.
- POROUS GRANULAR MATERIAL INCLUDED IN PAY ITEM FOR BOX CULVERT
- RIPRAP (SPECIAL)

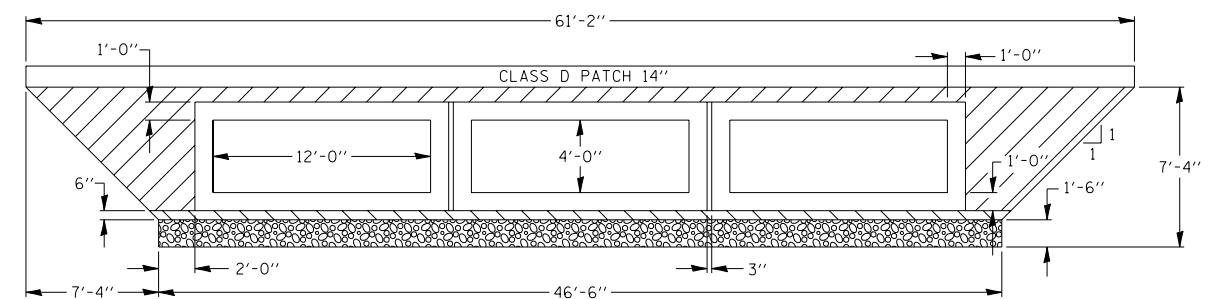
THIS CROSS SECTION IS DRAWN PERPENDICULAR TO FLOW LINE OF CULVERT

BOX CULVERT NO. 3
 STA. 367+52



- PAY LIMITS OF POROUS GRANULAR BACKFILL = 73.3 CU. YD.
- POROUS GRANULAR MATERIAL INCLUDED IN PAY ITEM FOR BOX CULVERT
- RIPRAP (SPECIAL)

BOX CULVERT NO. 4
 STA. 539+68



- PAY LIMITS OF POROUS GRANULAR BACKFILL = 209.6 CU. YD.
- POROUS GRANULAR MATERIAL INCLUDED IN PAY ITEM FOR BOX CULVERT
- RIPRAP (SPECIAL)

THIS CROSS SECTION IS DRAWN PERPENDICULAR TO FLOW LINE OF CULVERT