

F.A.P. RTE.	SECTION	COUNTY	TOTAL SHEETS	SHEET No.
315	34-5	HANCOCK	612	69
STA. 1273+00 TO STA. 1332+00				
FED. ROAD DIST. No. ILLINOIS FED. AID PROJECT				

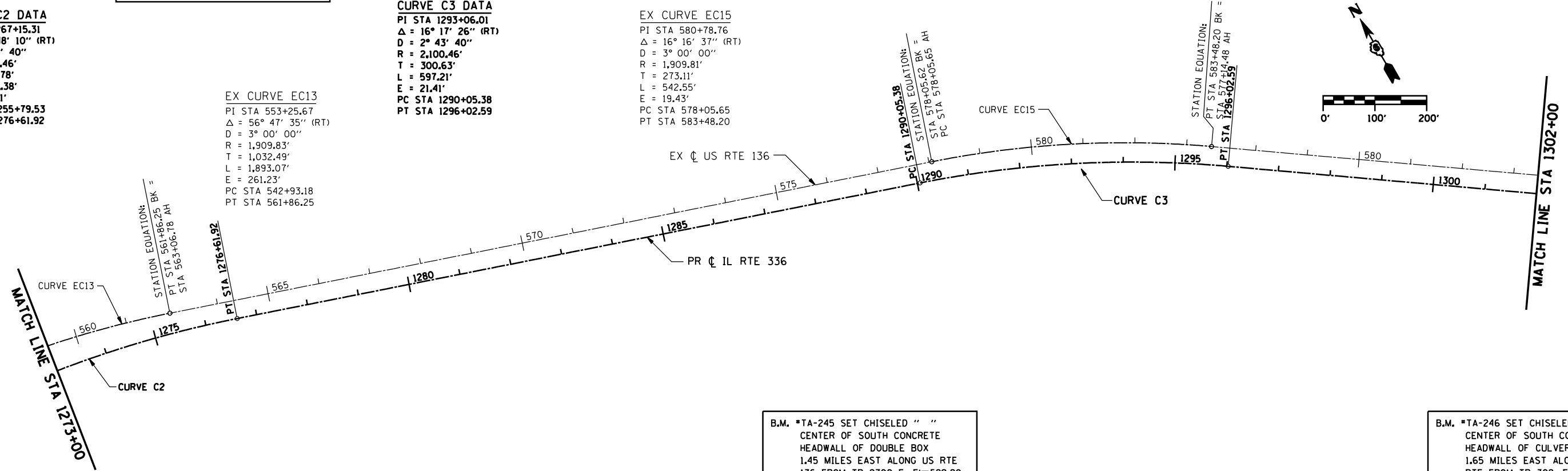
B.M. *TA-244 SET 60D SPIKE NAIL IN GUY POLE 1.25 MILES EAST ALONG US RTE 136 FROM TR 302, NORTH OF ϕ EL 546.45

CURVE C2 DATA
 PI STA 1267+15.31
 $\Delta = 56^\circ 48' 10''$ (RT)
 $D = 2^\circ 43' 40''$
 $R = 2,100.46'$
 $T = 1,135.78'$
 $L = 2,082.38'$
 $E = 287.41'$
 PC STA 1255+79.53
 PT STA 1276+61.92

CURVE C3 DATA
 PI STA 1293+06.01
 $\Delta = 16^\circ 17' 26''$ (RT)
 $D = 2^\circ 43' 40''$
 $R = 2,100.46'$
 $T = 300.63'$
 $L = 597.21'$
 $E = 21.41'$
 PC STA 1290+05.38
 PT STA 1296+02.59

EX CURVE EC15
 PI STA 580+78.76
 $\Delta = 16^\circ 16' 37''$ (RT)
 $D = 3^\circ 00' 00''$
 $R = 1,909.81'$
 $T = 273.11'$
 $L = 542.55'$
 $E = 19.43'$
 PC STA 578+05.65
 PT STA 583+48.20

EX CURVE EC13
 PI STA 553+25.67
 $\Delta = 56^\circ 47' 35''$ (RT)
 $D = 3^\circ 00' 00''$
 $R = 1,909.83'$
 $T = 1,032.49'$
 $L = 1,893.07'$
 $E = 261.23'$
 PC STA 542+93.18
 PT STA 561+86.25



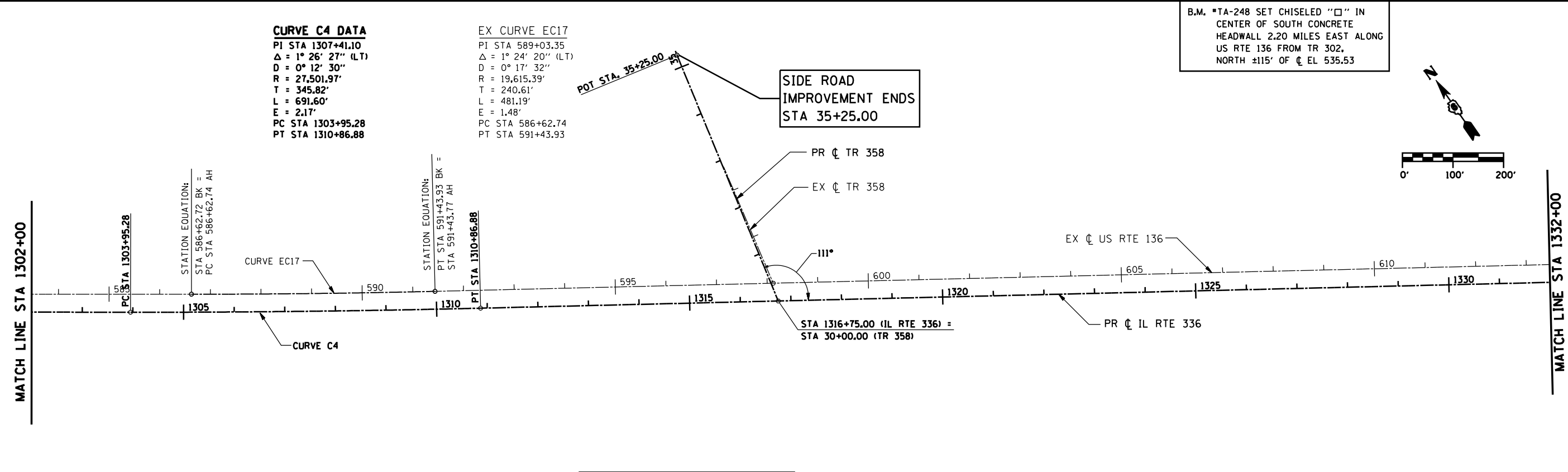
B.M. *TA-245 SET CHISELED " " CENTER OF SOUTH CONCRETE HEADWALL OF DOUBLE BOX 1.45 MILES EAST ALONG US RTE 136 FROM TR 2700 E. $E \square$ 529.90

B.M. *TA-246 SET CHISELED " " IN CENTER OF SOUTH CONCRETE HEADWALL OF CULVERT 1.65 MILES EAST ALONG US RTE 136 FROM TR 302, EL 540.57

CURVE C4 DATA
 PI STA 1307+41.10
 $\Delta = 1^\circ 26' 27''$ (LT)
 $D = 0^\circ 12' 30''$
 $R = 27,501.97'$
 $T = 345.82'$
 $L = 691.60'$
 $E = 2.17'$
 PC STA 1303+95.28
 PT STA 1310+86.88

EX CURVE EC17
 PI STA 589+03.35
 $\Delta = 1^\circ 24' 20''$ (LT)
 $D = 0^\circ 17' 32''$
 $R = 19,615.39'$
 $T = 240.61'$
 $L = 481.19'$
 $E = 1.48'$
 PC STA 586+62.74
 PT STA 591+43.93

B.M. *TA-248 SET CHISELED " " IN CENTER OF SOUTH CONCRETE HEADWALL 2.20 MILES EAST ALONG US RTE 136 FROM TR 302, NORTH $\pm 115'$ OF ϕ EL 535.53



B.M. *TA-247 SET 60D SPIKE IN P.P. 1.90 MILES EAST ALONG US 136 RTE FROM TR 302, JUST WEST OF TR 358, SOUTH OF ϕ EL 529.62

DGN-SPEC
 DATE-TIME
 *REF01