

ANTICIPATED CONSTRUCTION ACTIVITY BAR CHART

F.A.P. RTE.	SECTION	COUNTY	TOTAL SHEETS	SHEET NO.
315	34-5	HANCOCK	612	76
STA.		TO STA.		
FED. ROAD DIST. NO.		ILLINOIS	FED. AID PROJECT	
D-96-553-02		CONTRACT NO. 72682		

ESTIMATED DATES

ESTIMATED WORKING DAYS

ANTICIPATED START
SEPTEMBER 1, 2006
(AFTER UTILITIES
ARE RELOCATED)

EST. OCT. 1, 2006
INTERIM SEEDING
COMPL. DATE

EST. DEC. 1, 2006
EST. MARCH 15, 2007
(ANTICIPATE NO WORK
DURING WINTER)

EST. JUNE 15, 2007

EST. SEPT. 1, 2007

EST. OCT. 1, 2007
INTERIM SEEDING
COMPL. DATE

EST. DEC. 1, 2007
(DEPENDENT ON TRAFFIC
SWITCH NO. 2 OF WEST
CONTRACT)

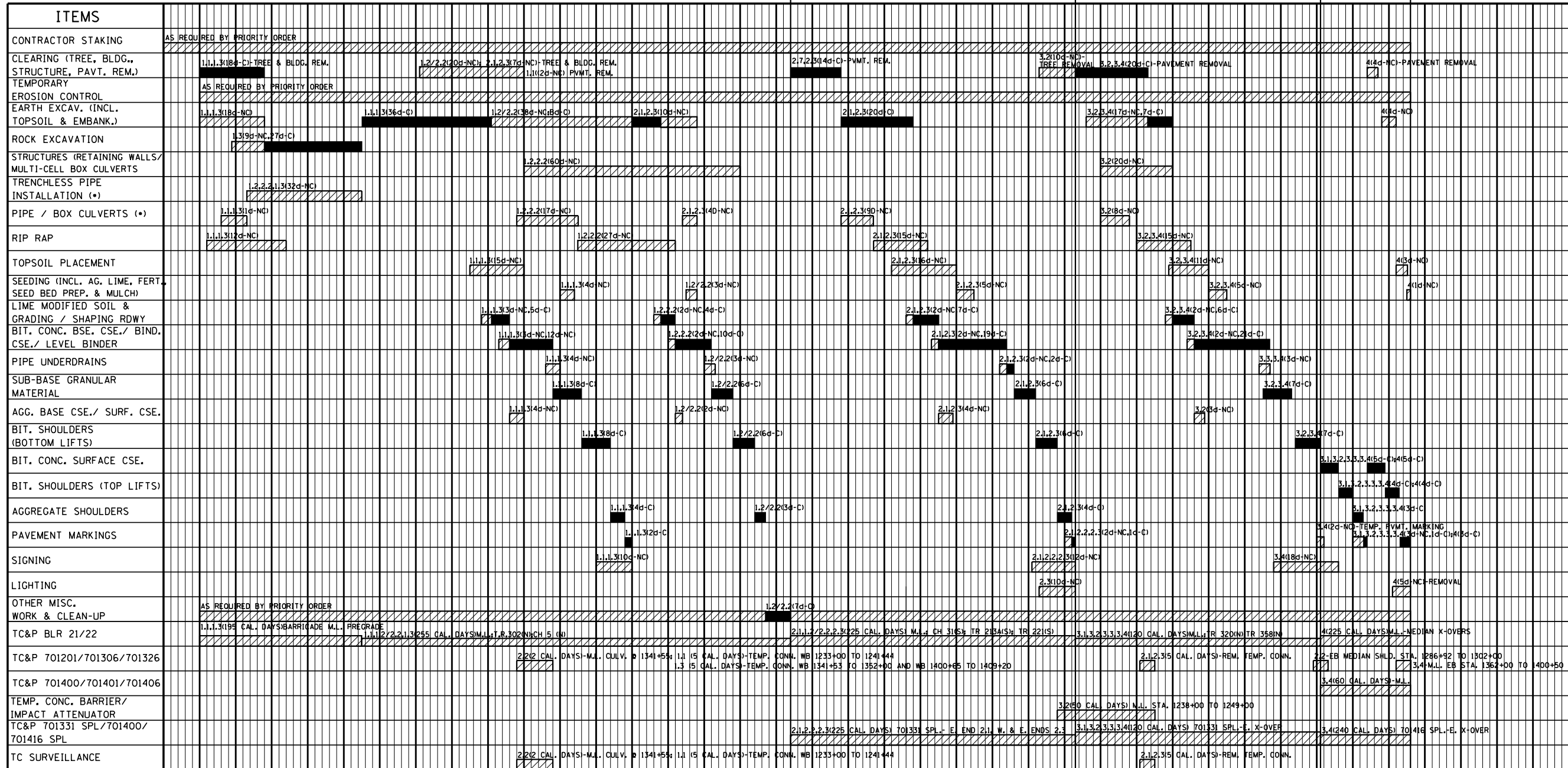
EST. MARCH 15, 2008

EST. MAY 1, 2008

EST. JULY 15, 2008

COMPLETION DATE
NOV. 15, 2008
TRAFFIC IN FINAL
POSITION
SHUT DOWN FOR WINTER
UNTIL MAY 1, 2009

PROJECT COMPLETION DATE
EST. JULY 1, 2009
(NOV. 15, 2008 +35 WD TO
COMPLETE BIT, SURF.,
BIT, SHLDS., (TOP LIFT)
AGG. SHLDS., PAVT. MKS.,
REMOVAL OF TEMP.
X-OVERS UNDER TRAFFIC



(*) INSTALLATION OF PIPE / BOX CULVERTS, ALSO INVOLVES NECESSARY CLEARING & EMBANKMENT/ EXCAVATION TO BE COMPLETED AT THE SAME TIME.

LEGEND

NON-CONTROLLING CONSTRUCTION ACTIVITY ITEM: STAGE (PORTION OF PROJECT) (SEE TRAFFIC CONTROL PLAN IN SPECIAL PROVISIONS)

CONTROLLING CONSTRUCTION ACTIVITY ITEM: ESTIMATED NUMBER OF WORKING DAYS TO COMPLETE WORK ITEM FOR THE PARTICULAR PORTION OF THE PROJECT, AND DEFINED AS CONTROLLING OR NON-CONTROLLING.

(C = CONTROLLING ITEM (CRITICAL PATH))
(NC = NON-CONTROLLING ITEM)

NOTE: FREE FLOAT NOT SHOWN FOR NON-CONTROLLING ITEMS

NOTE: MEDIAN X-OVER AT WEST END, MUST BE IN PLACE BY OTHER CONTRACTOR PRIOR TO THIS TRAFFIC SWITCH OR THEY MUST SWITCH TRAFFIC TO THE WB LANES AT THE SAME AS PORTION 1.1. CONTRACTOR COOPERATION IS REQUIRED.



STAGE (PORTION OF PROJECT)	DESCRIPTION
1.1	IL 336 WB-GRADING & PAVING- STA 1174+00 TO 1241+50
1.2/2.2	IL 336 EB-GRADING & PAVING- STA 1239+00 TO 1349+00
1.3	IL 336 WB-GRADING & PAVING- STA 1342+00 TO 1409+00
2.1	IL 336 EB-GRADING & PAVING- STA 1174+00 TO 1239+00
2.3	IL 336 EB-GRADING & PAVING- STA 1349+00 TO 1405+25
3.1	IL 336 WB-PAVING (TOP LIFT)- STA 1174+00 TO 1233+00
3.2	IL 336 WB-GRADING & PAVING- STA 1233+00 TO 1352+00
3.3	IL 336 WB-PAVING (TOP LIFT)- STA 1352+00 TO 1400+65
3.4*	IL 336 WB-GRADING & PAVING- STA 1400+64 TO 1405+25
4	IL 336 --PAVING (TOP LIFT)- EB STA 1155+00 TO 1405+25 WB STA 1155+50 TO 1174+00 & REMOVING WEST & EAST X-OVERS WB STA

(3.4*) NOTE:
THIS STAGE MAY BE ELIMINATED, AND PORTION 3.4 BUILT IN STAGE 1.3, IF WORK IS COORDINATED WITH EAST CONTRACTOR AND TRAFFIC IS SWITCHED TO WB LANES AT THE SAME TIME FOR SEGMENT 1.3. THIS WOULD ALSO ELIMINATE THE NEED OF THE 'EAST TEMPORARY CONNECTOR' (AS SHOWN ON SHT 143).

NOTE: SEE TRAFFIC CONTROL PLAN IN SPECIAL PROVISIONS AND STAGING DETAILS IN PLANS FOR MORE DESCRIPTIONS/DIRECTIONS.

THIS ANTICIPATED CONSTRUCTION ACTIVITY BAR CHART IS INCLUDED IN THE PLANS TO AID THE CONTRACTOR IN SCHEDULING WORK ACTIVITIES AND FOR BIDDING PURPOSES; HOWEVER, THIS TIME SCHEDULE SHOULD ONLY BE USED AS A GUIDE, AND IT SHALL BE THE CONTRACTORS RESPONSIBILITY TO ESTABLISH HIS/HER OWN TIME SCHEDULE FOR SCHEDULING AND BIDDING PURPOSES.