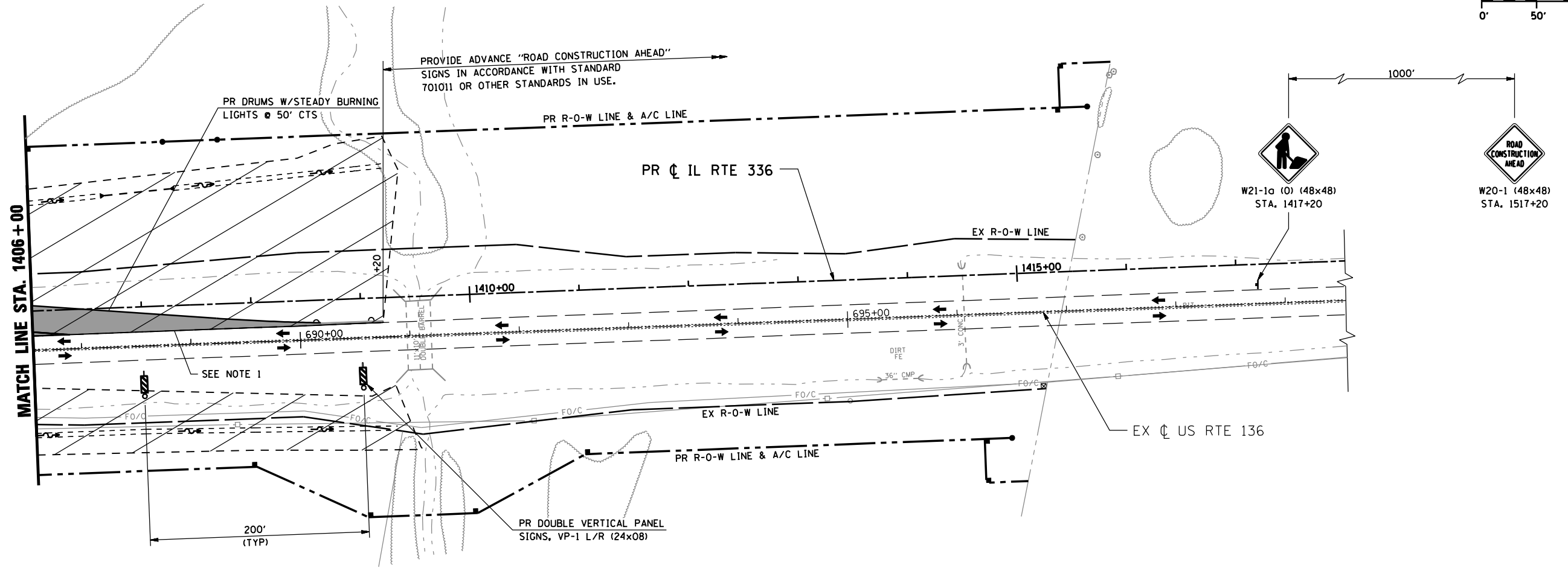
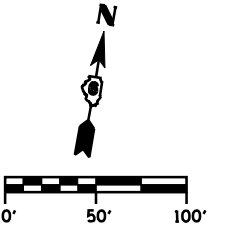


F.A.P. RTE.	SECTION	COUNTY	TOTAL SHEETS	SHEET No.
315	34-5	HANCOCK	612	96
STA. 1406+00 TO STA. 1418+00		FED. ROAD DIST. No. ILLINOIS FED. AID PROJECT		

NOTE:

1. PR TEMPORARY CROSS-OVER
STA. 1400+65 TO STA. 1409+20
(SEE "TEMPORARY CROSS-OVER DETAILS")
2. PROVIDE TRAFFIC CONTROL AND PROTECTION
IN ACCORDANCE WITH STANDARD 701001,
701006 AND 701326 FOR CONSTRUCTION
OF TEMPORARY PAVEMENT ADJACENT TO
EXISTING US 136.



LEGEND

- DIRECTION OF TRAFFIC
- TT TYPE III BARRICADE W/ PROPER ROAD CLOSURE SIGNS
- ~ PERMANENT ROADWAY DITCH FLOW
- ⇄ TEMPORARY STAGE DITCH FLOW
- ~ EXISTING ROADWAY DITCH FLOW
- || Z || STAGE CONSTRUCTION LIMITS
- █ STAGE CONSTRUCTION
- XXXXX REMOVAL
- ① EXISTING PAVEMENT MARKING
- ② TEMP PAINT PAVEMENT MARKING - LINE 5"
- ③ TEMP PAINT PAVEMENT MARKING - LINE 6"
- ④ TEMP PAINT PAVEMENT MARKING - LINE 12"
- ⑤ TEMP PAINT PAVEMENT MARKING - LINE 24"
- ⑥ TEMP PAINT PAVEMENT MARKING - LETTERS & SYMBOLS

REVISIONS	
NAME	DATE

ILLINOIS DEPARTMENT OF TRANSPORTATION

**MAINTENANCE OF TRAFFIC
IL RTE 336 (STAGE 1)
STA. 1406+00 TO STA. 1418+00**

SCALE: DATE: MARCH 10, 2006 DRAWN BY: RG CHECKED BY: JAC