

F.A.P. RTE.	SECTION	COUNTY	TOTAL SHEETS	SHEET No.
315	34-5	HANCOCK	612	137
STA.	1352+00	TO STA.	1366+00	
FED. ROAD DIST. No.	ILLINOIS	FED. AID PROJECT		

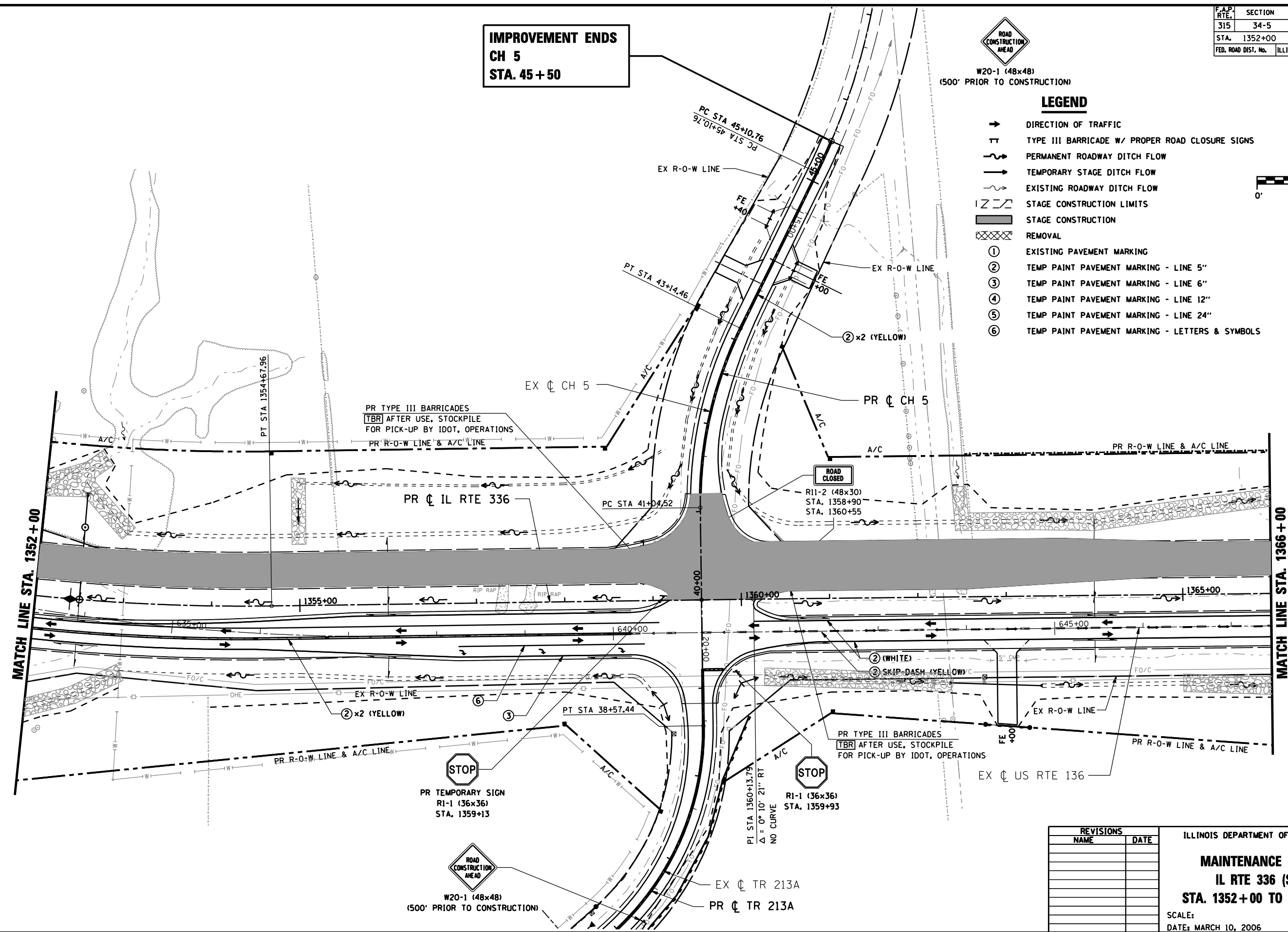
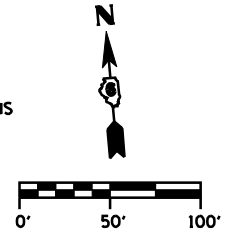
**IMPROVEMENT ENDS
CH 5
STA. 45+50**



W20-1 (48x48)
(500' PRIOR TO CONSTRUCTION)

LEGEND

- DIRECTION OF TRAFFIC
- TT TYPE III BARRICADE W/ PROPER ROAD CLOSURE SIGNS
- ~ PERMANENT ROADWAY DITCH FLOW
- ~ TEMPORARY STAGE DITCH FLOW
- ~ EXISTING ROADWAY DITCH FLOW
- STAGE CONSTRUCTION LIMITS
- █ STAGE CONSTRUCTION
- ▨ REMOVAL
- ① EXISTING PAVEMENT MARKING
- ② TEMP PAINT PAVEMENT MARKING - LINE 5"
- ③ TEMP PAINT PAVEMENT MARKING - LINE 6"
- ④ TEMP PAINT PAVEMENT MARKING - LINE 12"
- ⑤ TEMP PAINT PAVEMENT MARKING - LINE 24"
- ⑥ TEMP PAINT PAVEMENT MARKING - LETTERS & SYMBOLS



REVISIONS	
NAME	DATE

ILLINOIS DEPARTMENT OF TRANSPORTATION
**MAINTENANCE OF TRAFFIC
 IL RTE 336 (STAGE 3)
 STA. 1352+00 TO STA. 1366+00**
 SCALE: DATE: MARCH 10, 2006
 DRAWN BY: RG
 CHECKED BY: JAC

•DGN-SPEC•
 •DATE-TIME•
 •REF01

D6 PROJECT: FILE: