

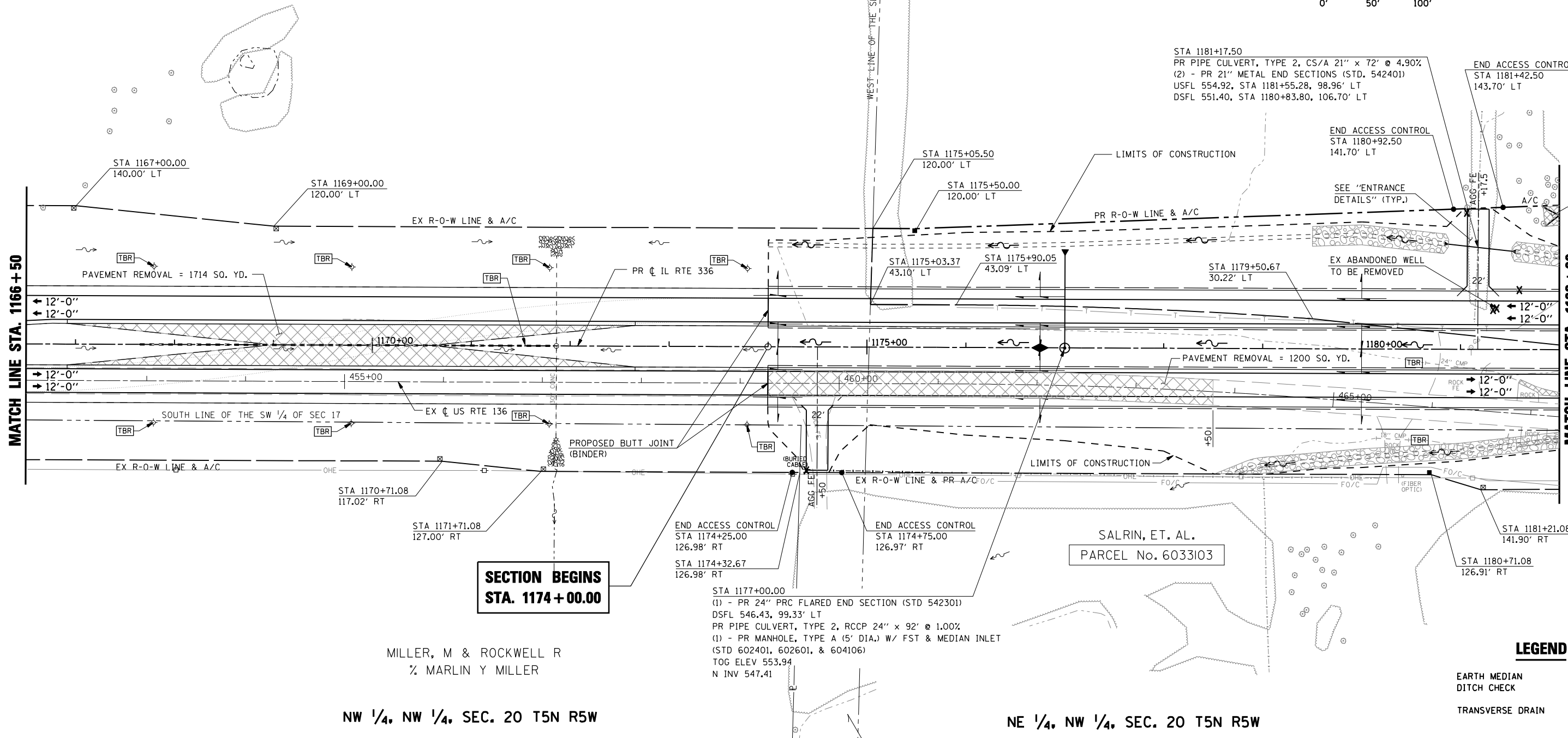
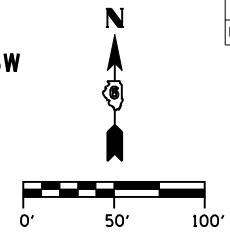
F.A.P. RTE.	SECTION	COUNTY	TOTAL SHEETS	SHEET No.
315	34-5	HANCOCK	612	150
STA. 1166+50		TO STA. 1182+00		
FED. ROAD DIST. No.		ILLINOIS	FED. AID PROJECT	

SW 1/4, SW 1/4, SEC. 17 T5N R5W

MILLER, M & ROCKWELL R
1/2 MARLIN Y MILLER

SE 1/4, SW 1/4, SEC. 17 T5N R5W

SALRIN, ET. AL.
PARCEL No. 6033102



**SECTION BEGINS
STA. 1174 + 00.00**

NW 1/4, NW 1/4, SEC. 20 T5N R5W
MILLER, M & ROCKWELL R
1/2 MARLIN Y MILLER

SALRIN, ET. AL.
PARCEL No. 6033103

NE 1/4, NW 1/4, SEC. 20 T5N R5W

LEGEND

- EARTH MEDIAN
- DITCH CHECK
- TRANSVERSE DRAIN

REVISIONS	
NAME	DATE

ILLINOIS DEPARTMENT OF TRANSPORTATION

ROADWAY PLAN
IL RTE 336
STA. 1166+50 TO STA. 1182+00

SCALE: _____ DRAWN BY: RG
DATE: MARCH 10, 2006 CHECKED BY: JAC

•DGN-SPEC•
•DATE-TIME•
•REF01

D6 PROJECT: FILE: