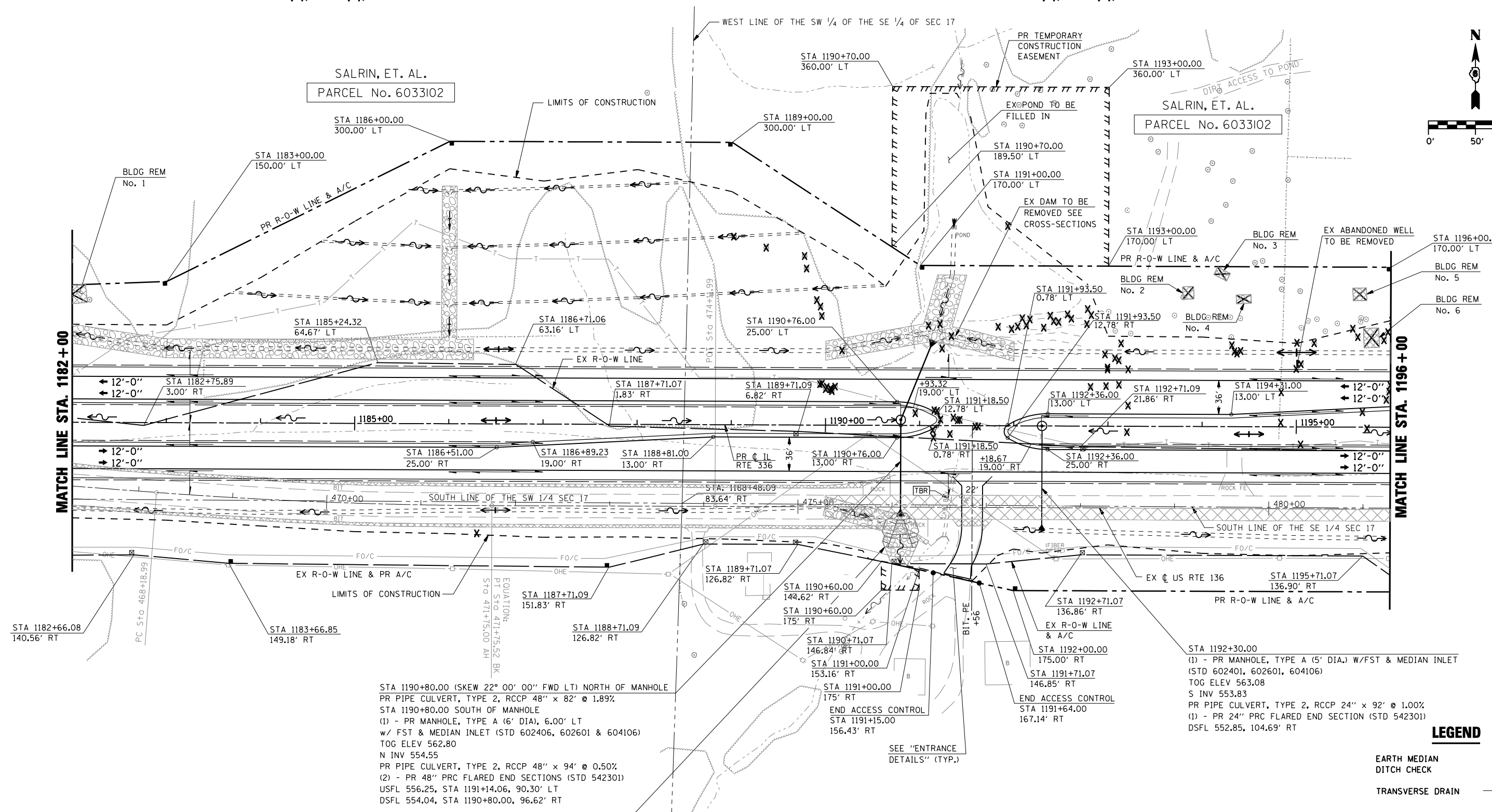
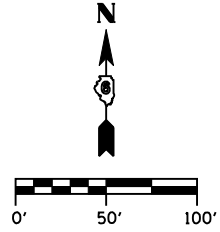


F.A.P. RTE.	SECTION	COUNTY	TOTAL SHEETS	SHEET No.
315	34-5	HANCOCK	612	152
STA. 1182+00 TO STA. 1196+00				
FED. ROAD DIST. No.		ILLINOIS	FED. AID PROJECT	

SE 1/4, SW 1/4, SEC. 17 T5N R5W

SW 1/4, SE 1/4, SEC. 17 T5N R5W



STA 1190+80.00 (SKEW 22° 00' 00" FWD LT) NORTH OF MANHOLE
 PR PIPE CULVERT, TYPE 2, RCCP 48" x 82' @ 1.89%
 STA 1190+80.00 SOUTH OF MANHOLE
 (1) - PR MANHOLE, TYPE A (6' DIA), 6.00' LT
 w/ FST & MEDIAN INLET (STD 602406, 602601 & 604106)
 TOG ELEV 562.80
 N INV 554.55
 PR PIPE CULVERT, TYPE 2, RCCP 48" x 94' @ 0.50%
 (2) - PR 48" PRC FLARED END SECTIONS (STD 542301)
 USFL 556.25, STA 1191+14.06, 90.30' LT
 DSFL 554.04, STA 1190+80.00, 96.62' RT

PR RIPRAP (SEE "RIPRAP ENERGY DISSIPATOR DETAILS FOR PIPE CULVERTS")

STA 1192+30.00
 (1) - PR MANHOLE, TYPE A (5' DIA) W/FST & MEDIAN INLET (STD 602401, 602601, 604106)
 TOG ELEV 563.08
 S INV 553.83
 PR PIPE CULVERT, TYPE 2, RCCP 24" x 92' @ 1.00%
 (1) - PR 24" PRC FLARED END SECTION (STD 542301)
 DSFL 552.85, 104.69' RT

LEGEND

- EARTH MEDIAN DITCH CHECK
- TRANSVERSE DRAIN

REVISIONS	
NAME	DATE

ILLINOIS DEPARTMENT OF TRANSPORTATION

ROADWAY PLAN
IL RTE 336
STA. 1182+00 TO STA. 1196+00

SCALE: _____ DRAWN BY: RG
 DATE: MARCH 10, 2006 CHECKED BY: JAC

DGN-SPEC
 DATE-TIME
 *REF01