

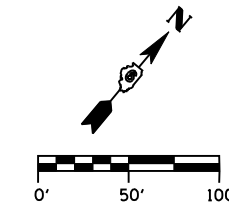
F.A.P. RTE.	SECTION	COUNTY	TOTAL SHEETS	SHEET No.
315	34-5	HANCOCK	612	162
STA. 1244+00		TO STA. 1256+00		
FED. ROAD DIST. No.		ILLINOIS	FED. AID PROJECT	

SE 1/4, SW 1/4, SEC. 16 T5N R5W

NW 1/4, SE 1/4, SEC. 16 T5N R5W

CURVE C1 DATA

PI STA 1238+44.42
 Δ = 38° 15' 04" (LT)
 D = 2° 43' 40"
 R = 2,100.46'
 T = 728.40'
 L = 1,402.28'
 E = 122.71'
 e = 0.067'
 T.R. = 39'
 S.E. RUN = 270'
 PC STA 1231+16.02
 PT STA 1245+18.30
 S.E. ATTAINED FROM
 STA 1228+97.02 TO 1232+06.02
 S.E. REMOVED FROM
 STA 1244+28.30 TO 1247+37.30

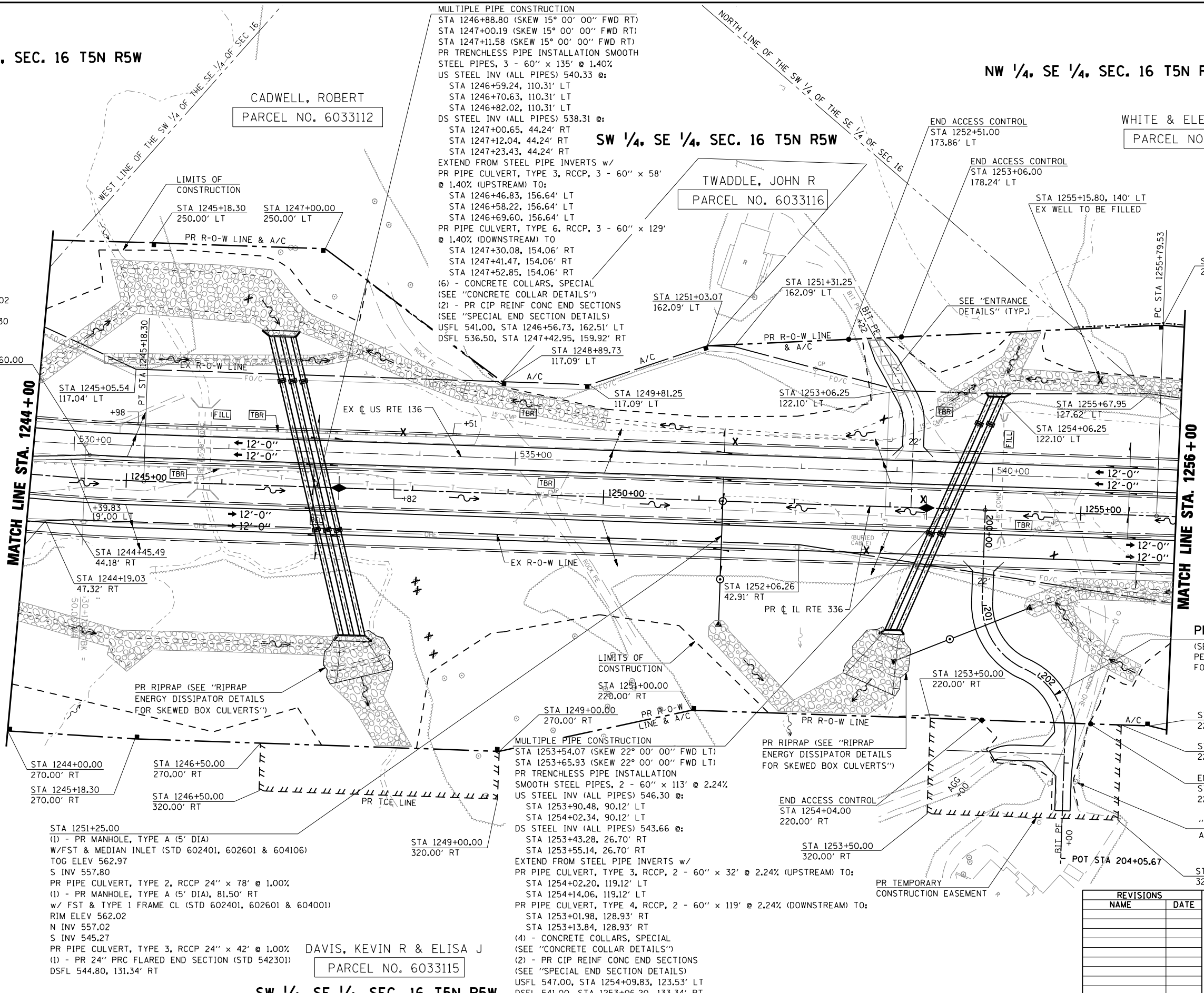


CURVE C2 DATA

PI STA 1267+15.31
 Δ = 56° 48' 10" (RT)
 D = 2° 43' 40"
 R = 2,100.46'
 T = 1,135.78'
 L = 2,082.38'
 E = 287.41'
 e = 0.067'
 T.R. = 39'
 S.E. RUN = 270'
 PC STA 1255+79.53
 PT STA 1276+61.92
 S.E. ATTAINED FROM
 STA 1253+60.53 TO 1256+69.53
 S.E. REMOVED FROM
 STA 1275+71.92 TO 1278+80.92

LEGEND

- EARTH MEDIAN
- DITCH CHECK
- TRANSVERSE DRAIN



MULTIPLE PIPE CONSTRUCTION
 STA 1246+88.80 (SKEW 15° 00' 00" FWD RT)
 STA 1247+00.19 (SKEW 15° 00' 00" FWD RT)
 STA 1247+11.58 (SKEW 15° 00' 00" FWD RT)
 PR TRENCHLESS PIPE INSTALLATION SMOOTH
 STEEL PIPES, 3 - 60" x 135' @ 1.40%
 US STEEL INV (ALL PIPES) 540.33 @:
 STA 1246+59.24, 110.31' LT
 STA 1246+70.63, 110.31' LT
 STA 1246+82.02, 110.31' LT
 DS STEEL INV (ALL PIPES) 538.31 @:
 STA 1247+00.65, 44.24' RT
 STA 1247+12.04, 44.24' RT
 STA 1247+23.43, 44.24' RT
 EXTEND FROM STEEL PIPE INVERTS w/
 PR PIPE CULVERT, TYPE 3, RCCP, 3 - 60" x 58'
 @ 1.40% (UPSTREAM) TO:
 STA 1246+46.83, 156.64' LT
 STA 1246+58.22, 156.64' LT
 STA 1246+69.60, 156.64' LT
 PR PIPE CULVERT, TYPE 6, RCCP, 3 - 60" x 129'
 @ 1.40% (DOWNSTREAM) TO
 STA 1247+30.08, 154.06' RT
 STA 1247+41.47, 154.06' RT
 STA 1247+52.85, 154.06' RT
 (6) - CONCRETE COLLARS, SPECIAL
 (SEE "CONCRETE COLLAR DETAILS")
 (2) - PR CIP REINF CONC END SECTIONS
 (SEE "SPECIAL END SECTION DETAILS")
 USFL 541.00, STA 1246+56.73, 162.51' LT
 DSFL 536.50, STA 1247+42.95, 159.92' RT
 STA 1248+89.73
 117.09' LT

MULTIPLE PIPE CONSTRUCTION
 STA 1253+54.07 (SKEW 22° 00' 00" FWD LT)
 STA 1253+65.93 (SKEW 22° 00' 00" FWD LT)
 PR TRENCHLESS PIPE INSTALLATION
 SMOOTH STEEL PIPES, 2 - 60" x 113' @ 2.24%
 US STEEL INV (ALL PIPES) 546.30 @:
 STA 1253+90.48, 90.12' LT
 STA 1254+02.34, 90.12' LT
 DS STEEL INV (ALL PIPES) 543.66 @:
 STA 1253+43.28, 26.70' RT
 STA 1253+55.14, 26.70' RT
 STA 1254+14.06, 119.12' LT
 EXTEND FROM STEEL PIPE INVERTS w/
 PR PIPE CULVERT, TYPE 3, RCCP, 2 - 60" x 32' @ 2.24% (UPSTREAM) TO:
 STA 1254+02.20, 119.12' LT
 STA 1254+14.06, 119.12' LT
 PR PIPE CULVERT, TYPE 4, RCCP, 2 - 60" x 119' @ 2.24% (DOWNSTREAM) TO:
 STA 1253+01.98, 128.93' RT
 STA 1253+13.84, 128.93' RT
 (4) - CONCRETE COLLARS, SPECIAL
 (SEE "CONCRETE COLLAR DETAILS")
 (2) - PR CIP REINF CONC END SECTIONS
 (SEE "SPECIAL END SECTION DETAILS")
 USFL 547.00, STA 1254+09.83, 123.53' LT
 DSFL 541.00, STA 1253+06.20, 133.34' RT

STA 1251+25.00
 (1) - PR MANHOLE, TYPE A (5' DIA)
 W/FST & MEDIAN INLET (STD 602401, 602601 & 604106)
 TOG ELEV 562.97
 S INV 557.80
 PR PIPE CULVERT, TYPE 2, RCCP 24" x 78' @ 1.00%
 (1) - PR MANHOLE, TYPE A (5' DIA), 81.50' RT
 w/ FST & TYPE 1 FRAME CL (STD 602401, 602601 & 604001)
 RIM ELEV 562.02
 N INV 557.02
 S INV 545.27
 PR PIPE CULVERT, TYPE 3, RCCP 24" x 42' @ 1.00%
 (1) - PR 24" PRC FLARED END SECTION (STD 542301)
 DSFL 544.80, 131.34' RT

DAVIS, KEVIN R & ELISA J
 PARCEL NO. 6033115

SW 1/4, SE 1/4, SEC. 16 T5N R5W

REVISIONS	
NAME	DATE

ILLINOIS DEPARTMENT OF TRANSPORTATION
ROADWAY PLAN
IL RTE 336
STA. 1244+00 TO STA. 1256+00
 SCALE: DATE: MARCH 10, 2006
 DRAWN BY: RG
 CHECKED BY: JAC