

F.A.P. RTE.	SECTION	COUNTY	TOTAL SHEETS	SHEET No.
315	34-5	HANCOCK	612	178
STA. 1352+00		TO STA. 1366+00		
FED. ROAD DIST. No.		ILLINOIS	FED. AID PROJECT	

**IMPROVEMENT ENDS  
C.H. 5  
STA 45+50.00**

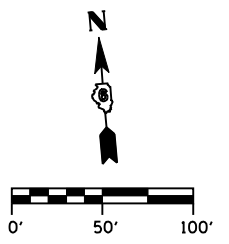
**CURVE CH5-1 DATA**

PI STA 42+11.47  
 $\Delta = 26^\circ 56' 33''$  (RT)  
 $D = 12^\circ 50' 00''$   
 $R = 446.46'$   
 $T = 106.95'$   
 $L = 209.94'$   
 $E = 12.63'$   
 $e = 0.37''$   
 $T.R. = 27'$   
 $S.E. RUN = 67'$   
 $PC STA 41+04.52$   
 $PT STA 43+14.46$   
 $S.E. ATTAINED FROM \pm 0.3\% @$   
 $STA 40+49.00 TO -3.7\% @$   
 $STA 41+26.85$   
 $S.E. REMOVED FROM$   
 $STA 42+92.13 TO STA 43+86.13$

**CURVE CH5-2 DATA**

PI STA 47+19.78  
 $\Delta = 31^\circ 08' 48''$  (LT)  
 $D = 7^\circ 38' 22''$   
 $R = 750.00'$   
 $T = 209.03'$   
 $L = 407.71'$   
 $E = 28.58'$   
 $e = 0.05''$   
 $T.R. = N/A$   
 $S.E. RUN = N/A$   
 $PC STA 45+10.76$   
 $PT STA 49+18.47$

SW 1/4, NE 1/4, SEC. 23 T5N R5W



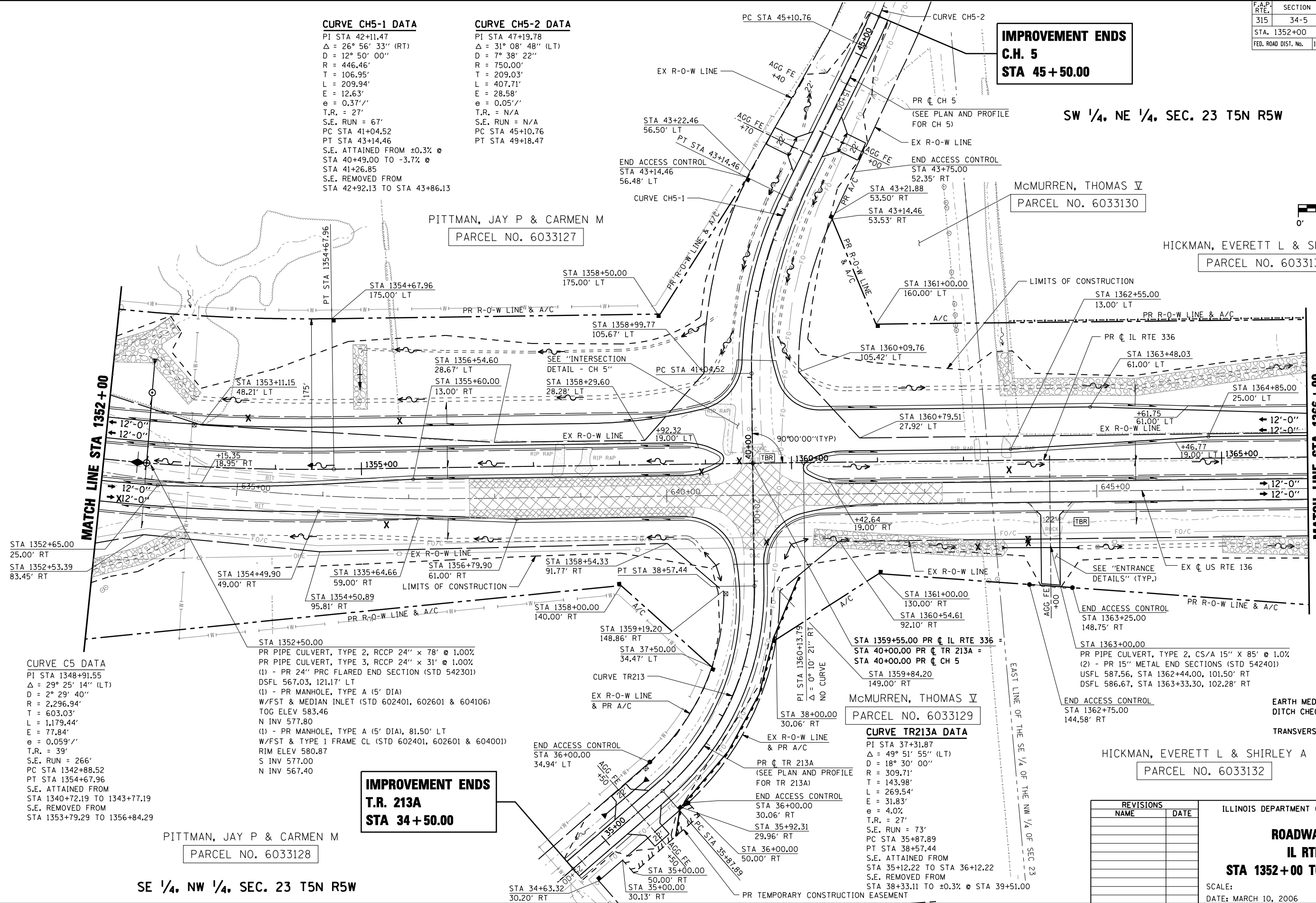
PITTMAN, JAY P & CARMEN M  
 PARCEL NO. 6033127

McMURREN, THOMAS V  
 PARCEL NO. 6033130

HICKMAN, EVERETT L & SHIRLEY A  
 PARCEL NO. 6033131

MATCH LINE STA 1352+00

MATCH LINE STA 1366+00



**CURVE C5 DATA**

PI STA 1348+91.55  
 $\Delta = 29^\circ 25' 14''$  (LT)  
 $D = 2^\circ 29' 40''$   
 $R = 2,296.94'$   
 $T = 603.03'$   
 $L = 1,179.44'$   
 $E = 77.84'$   
 $e = 0.059''$   
 $T.R. = 39'$   
 $S.E. RUN = 266'$   
 $PC STA 1342+88.52$   
 $PT STA 1354+67.96$   
 $S.E. ATTAINED FROM$   
 $STA 1340+72.19 TO 1343+77.19$   
 $S.E. REMOVED FROM$   
 $STA 1353+79.29 TO 1356+84.29$

**PR PIPE CULVERT, TYPE 2, RCCP 24" x 78" @ 1.00%**

PR PIPE CULVERT, TYPE 3, RCCP 24" x 31" @ 1.00%  
 (1) - PR 24" PRC FLARED END SECTION (STD 542301)  
 DSFL 567.03, 121.17' LT  
 (1) - PR MANHOLE, TYPE A (5' DIA)  
 W/FST & MEDIAN INLET (STD 602401, 602601 & 604106)  
 TOG ELEV 583.46  
 N INV 577.80  
 (1) - PR MANHOLE, TYPE A (5' DIA), 81.50' LT  
 W/FST & TYPE 1 FRAME CL (STD 602401, 602601 & 604001)  
 RIM ELEV 580.87  
 S INV 577.00  
 N INV 567.40

**IMPROVEMENT ENDS  
T.R. 213A  
STA 34+50.00**

PITTMAN, JAY P & CARMEN M  
 PARCEL NO. 6033128

SE 1/4, NW 1/4, SEC. 23 T5N R5W

McMURREN, THOMAS V  
 PARCEL NO. 6033129

**CURVE TR213A DATA**

PI STA 37+31.87  
 $\Delta = 49^\circ 51' 55''$  (LT)  
 $D = 18^\circ 30' 00''$   
 $R = 309.71'$   
 $T = 143.98'$   
 $L = 269.54'$   
 $E = 31.83'$   
 $e = 4.0''$   
 $T.R. = 27'$   
 $S.E. RUN = 73'$   
 $PC STA 35+87.89$   
 $PT STA 38+57.44$   
 $S.E. ATTAINED FROM$   
 $STA 35+12.22 TO STA 36+12.22$   
 $S.E. REMOVED FROM$   
 $STA 38+33.11 TO \pm 0.3\% @ STA 39+51.00$

HICKMAN, EVERETT L & SHIRLEY A  
 PARCEL NO. 6033132

**LEGEND**

- EARTH MEDIAN
- DITCH CHECK
- TRANSVERSE DRAIN

REVISIONS	
NAME	DATE

ILLINOIS DEPARTMENT OF TRANSPORTATION  
**ROADWAY PLAN**  
**IL RTE 336**  
**STA 1352+00 TO STA 1366+00**  
 SCALE: \_\_\_\_\_ DRAWN BY: RG  
 DATE: MARCH 10, 2006 CHECKED BY: JAC

•DGN: SPEC•  
 •DATE: TIME•  
 •REF: 01

D6 PROJECT: FILE: