

F.A.P. RTE.	SECTION	COUNTY	TOTAL SHEETS	SHEET No.
315	34-5	HANCOCK	612	184
STA. 1392+50 TO STA. 1406+00				
FED. ROAD DIST. No.		ILLINOIS	FED. AID PROJECT	

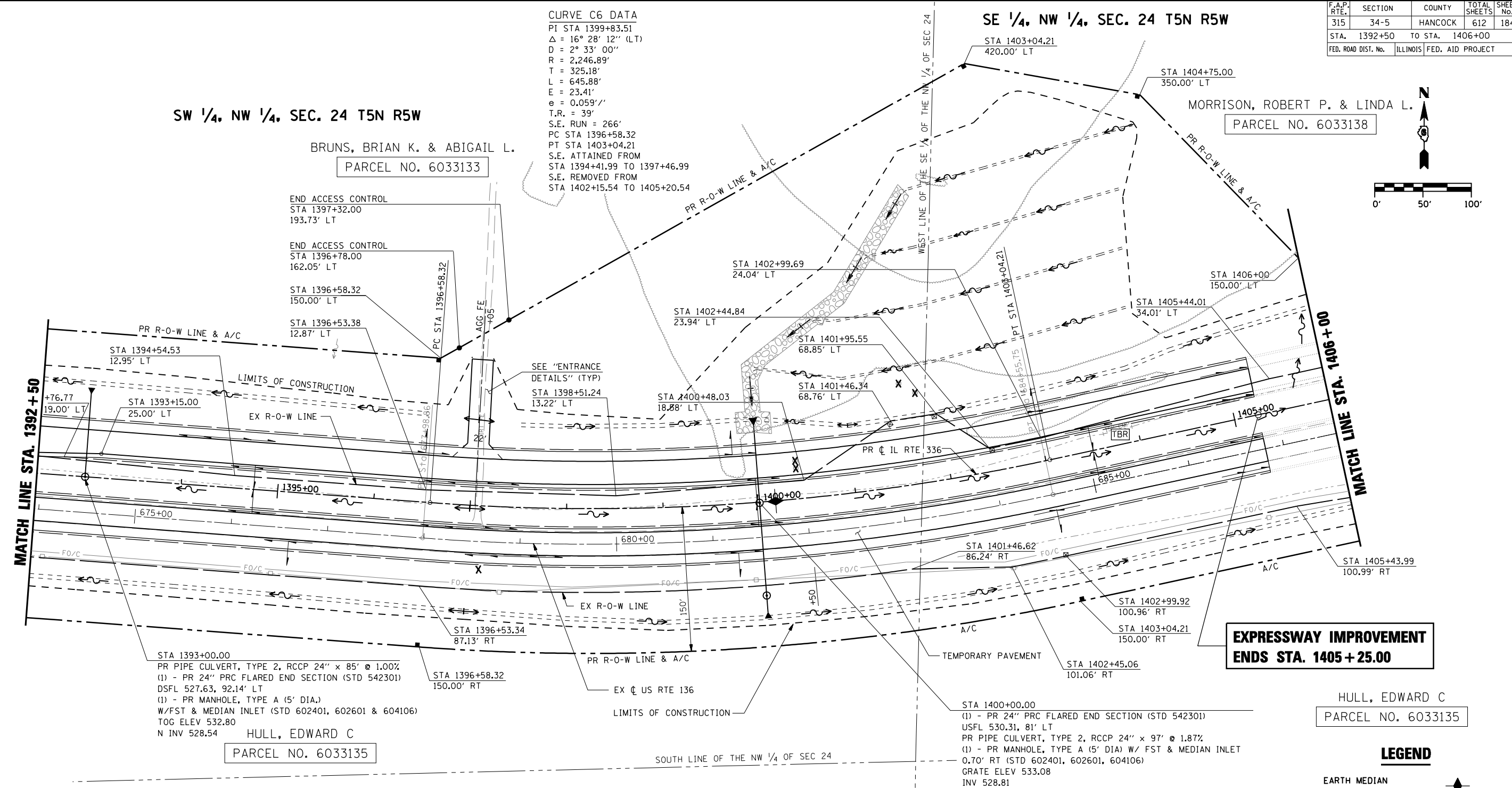
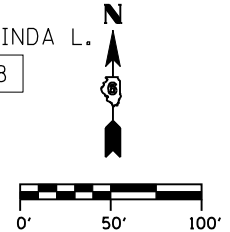
CURVE C6 DATA
 PI STA 1399+83.51
 $\Delta = 16^\circ 28' 12''$ (LT)
 $D = 2^\circ 33' 00''$
 $R = 2,246.89'$
 $T = 325.18'$
 $L = 645.88'$
 $E = 23.41'$
 $e = 0.059'/'$
 $T.R. = 39'$
 $S.E. RUN = 266'$
 PC STA 1396+58.32
 PT STA 1403+04.21
 S.E. ATTAINED FROM
 STA 1394+41.99 TO 1397+46.99
 S.E. REMOVED FROM
 STA 1402+15.54 TO 1405+20.54

SW 1/4, NW 1/4, SEC. 24 T5N R5W

SE 1/4, NW 1/4, SEC. 24 T5N R5W

BRUNS, BRIAN K. & ABIGAIL L.
 PARCEL NO. 6033133

MORRISON, ROBERT P. & LINDA L.
 PARCEL NO. 6033138



STA 1393+00.00
 PR PIPE CULVERT, TYPE 2, RCCP 24" x 85' @ 1.00%
 (1) - PR 24" PRC FLARED END SECTION (STD 542301)
 DSFL 527.63, 92.14' LT
 (1) - PR MANHOLE, TYPE A (5' DIA.)
 W/FST & MEDIAN INLET (STD 602401, 602601 & 604106)
 TOG ELEV 532.80
 N INV 528.54
 HULL, EDWARD C
 PARCEL NO. 6033135

STA 1400+00.00
 (1) - PR 24" PRC FLARED END SECTION (STD 542301)
 USFL 530.31, 81' LT
 PR PIPE CULVERT, TYPE 2, RCCP 24" x 97' @ 1.87%
 (1) - PR MANHOLE, TYPE A (5' DIA) W/ FST & MEDIAN INLET
 0.70' RT (STD 602401, 602601, 604106)
 GRATE ELEV 533.08
 INV 528.81
 PR PIPE CULVERT, TYPE 1, RCCP 24" x 80' @ 1.87%
 (1) - PR MANHOLE, TYPE A (5' DIA.)
 W/FST AND TYPE 1 FRAME, CLOSED LID
 (STD 602401, 602601 & 604001), 97' RT
 TOG ELEV. 531.05
 N INV = 527.00
 S INV = 524.60
 9(1) - PR PIPE CULVERT, TYPE 2, RCCP 24" X 17' @ 1.00%
 (1) - PR 24" PRC FLARED END SECTIONS (STD 542301)
 DSFL 524.43, 114.45' RT

**EXPRESSWAY IMPROVEMENT
 ENDS STA. 1405 + 25.00**

HULL, EDWARD C
 PARCEL NO. 6033135

LEGEND

- EARTH MEDIAN
- DITCH CHECK
- TRANSVERSE DRAIN

NOTE:
 ROCK EXCAVATION IS ANTICIPATED BETWEEN STA 1400+50 AND STA 1403+50.
 THE ACTUAL LIMITS OF ROCK EXCAVATION WILL BE DETERMINED BY THE ENGINEER.
 EXPOSED SHALE SHALL BE SCARIFIED HORIZONTALLY AS DIRECTED BY THE
 ENGINEER PRIOR TO PLACING TOPSOIL. SEE CROSS SECTIONS.

NW 1/4, SW 1/4, SEC. 24 T5N R5W

NE 1/4, SW 1/4, SEC. 24 T5N R5W

REVISIONS	
NAME	DATE

ILLINOIS DEPARTMENT OF TRANSPORTATION
ROADWAY PLAN
IL RTE 336
STA. 1392+50 TO STA. 1406+00
 SCALE: _____ DRAWN BY: RG
 DATE: MARCH 10, 2006 CHECKED BY: JAC

•DGN: SPEC•
 •DATE: TIME•
 •REF01