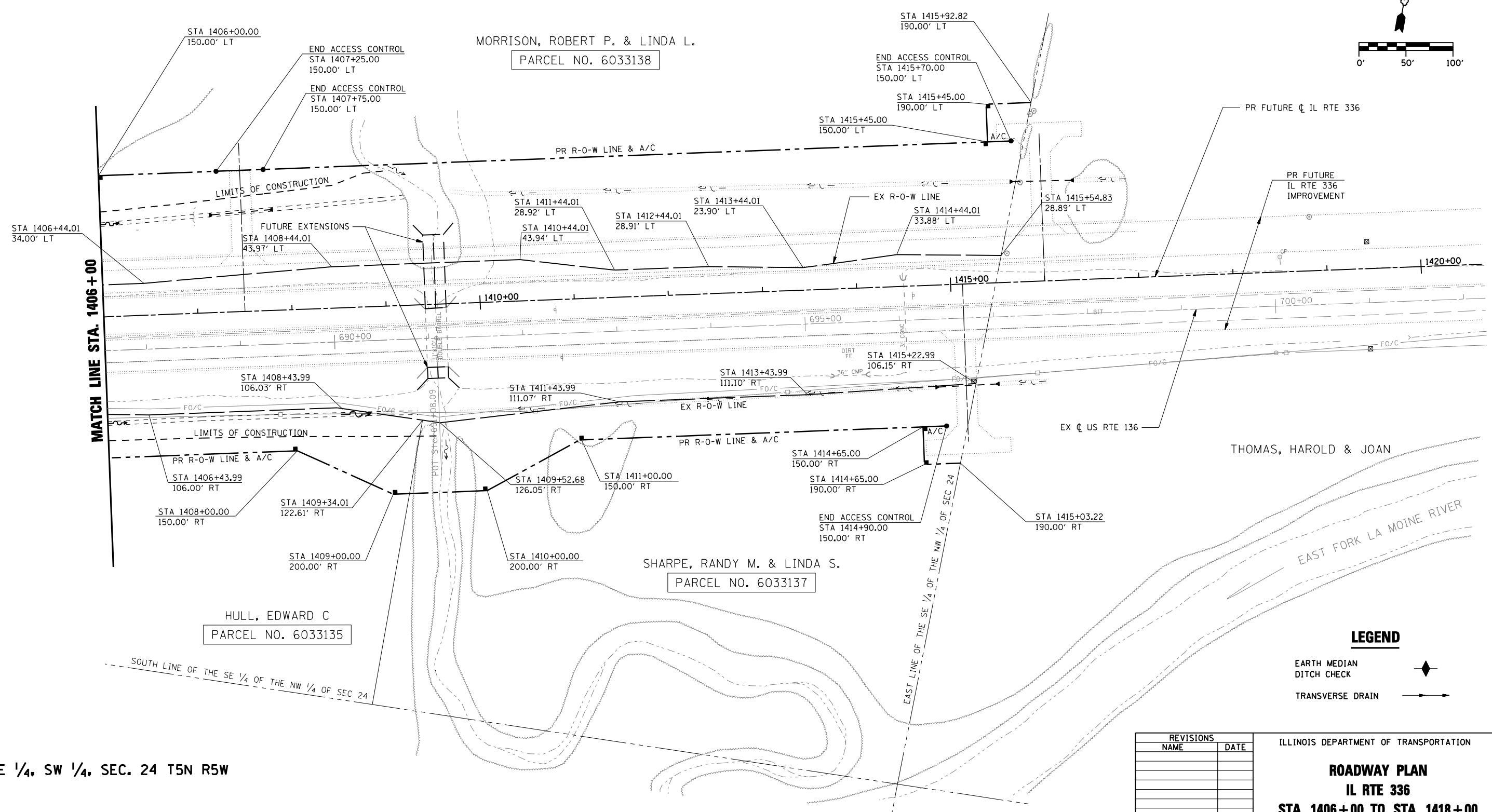
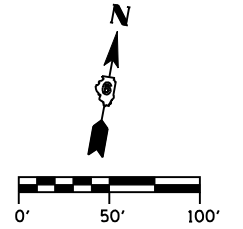


F.A.P. RTE.	SECTION	COUNTY	TOTAL SHEETS	SHEET No.
315	34-5	HANCOCK	612	186
STA.		TO STA.		
FED. ROAD DIST. No.	ILLINOIS	FED. AID PROJECT		

SE 1/4, NW 1/4, SEC. 24 T5N R5W

SW 1/4, NE 1/4, SEC. 24 T5N R5W

KOST, WARREN C & BETTY E



**LEGEND**

- EARTH MEDIAN DITCH CHECK
- TRANSVERSE DRAIN

REVISIONS	
NAME	DATE

ILLINOIS DEPARTMENT OF TRANSPORTATION  
**ROADWAY PLAN**  
**IL RTE 336**  
**STA. 1406+00 TO STA. 1418+00**  
 SCALE: DATE: MARCH 10, 2006 DRAWN BY: RG CHECKED BY: JAC

\*DGN-SPEC\*  
 \*DATE-TIME\*  
 \*REF01

D6 PROJECT: FILE:

NE 1/4, SW 1/4, SEC. 24 T5N R5W