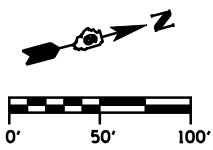


F.A.P. RTE.	SECTION	COUNTY	TOTAL SHEETS	SHEET No.
315	34-5	HANCOCK	612	191
STA. 20+00 TO STA. 24+00				
FED. ROAD DIST. No.		ILLINOIS	FED. AID PROJECT	



(*) STA 1237+50.00 PR C IL RTE 336
 = STA 20+00.00 PR C TR 320
 = STA 20+00.00 PR C CH 31

CURVE TR320 DATA

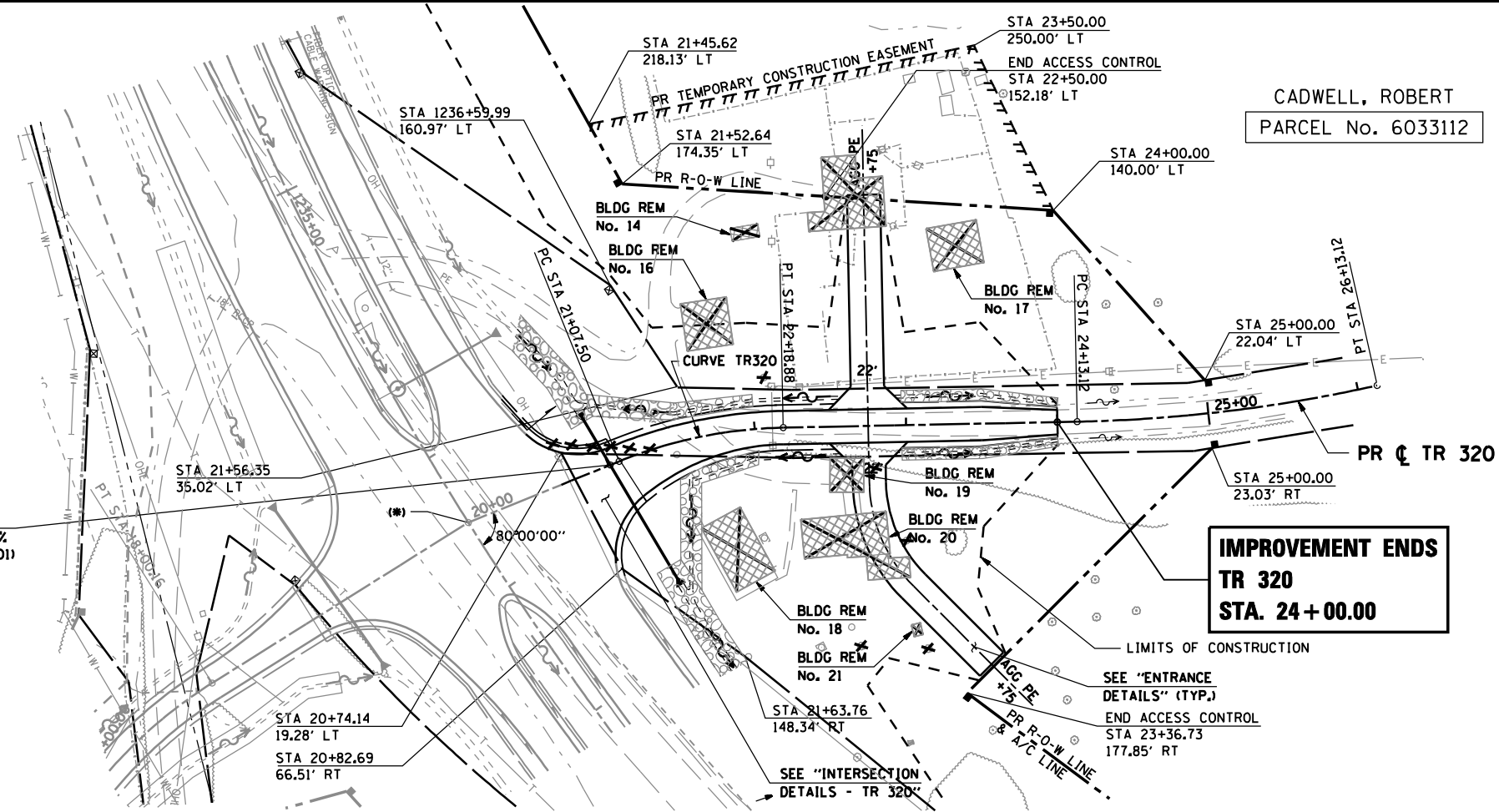
P.I. STA 21+63.82
 Δ = 20° 55' 18" (RT)
 D = 18° 47' 08"
 R = 305.00'
 T = 56.31'
 L = 111.37'
 E = 5.15'
 e = 0.047'
 T.R. = 38'
 S.E. RUN = 98'
 P.C. STA 21+07.50
 P.T. STA 22+18.88
 S.E. ATTAINED FROM 2.5% e
 STA 20+49 TO 21+41
 S.E. REMOVED FROM
 21+85 TO 23+21

DATE	BY
DATE	BY

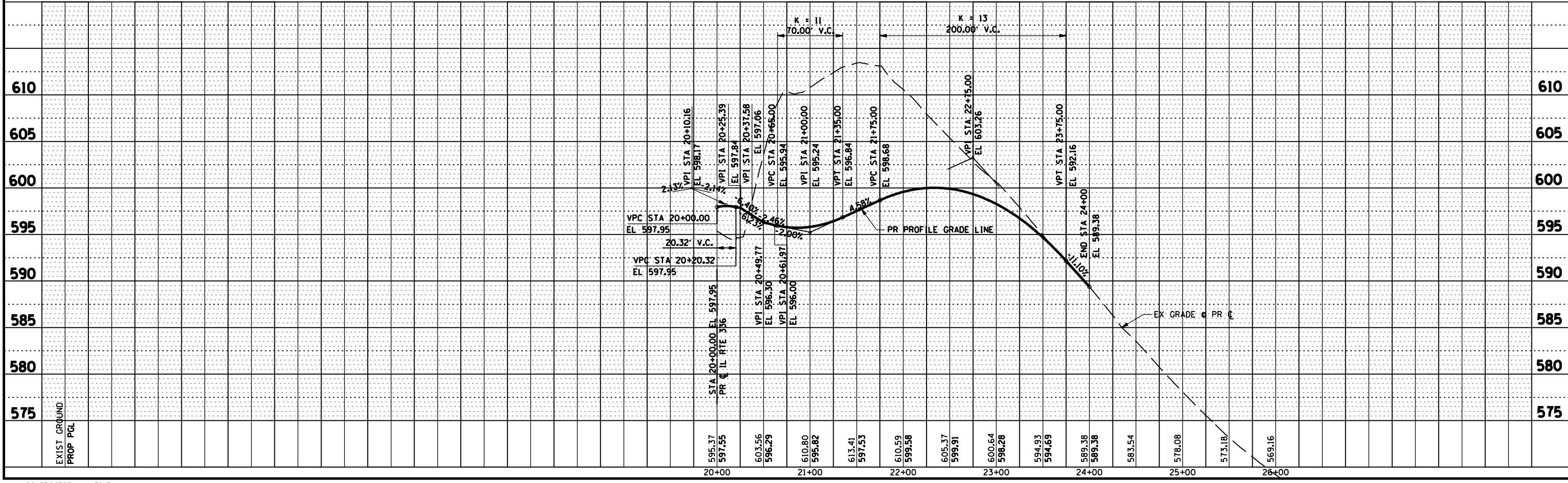
DATE	BY
DATE	BY

DGN-SPEC
 DATE-TIME
 *REF 01

STA 21+01.17 (TR 320) SKEW = 8°32'15" FWD RT
 PR PIPE CULVERT, TYPE 2, RCCP 24" x 120' @ 1.38%
 (2) - PR 24" PRC FLARED END SECTIONS (STD 542301)
 USFL 589.37, STA 20+95.31, 39.06' LT
 DSFL 587.54, STA 21+17.94, 90.86' RT



**IMPROVEMENT ENDS
 TR 320
 STA. 24+00.00**



D6 PROJECT: FILE: