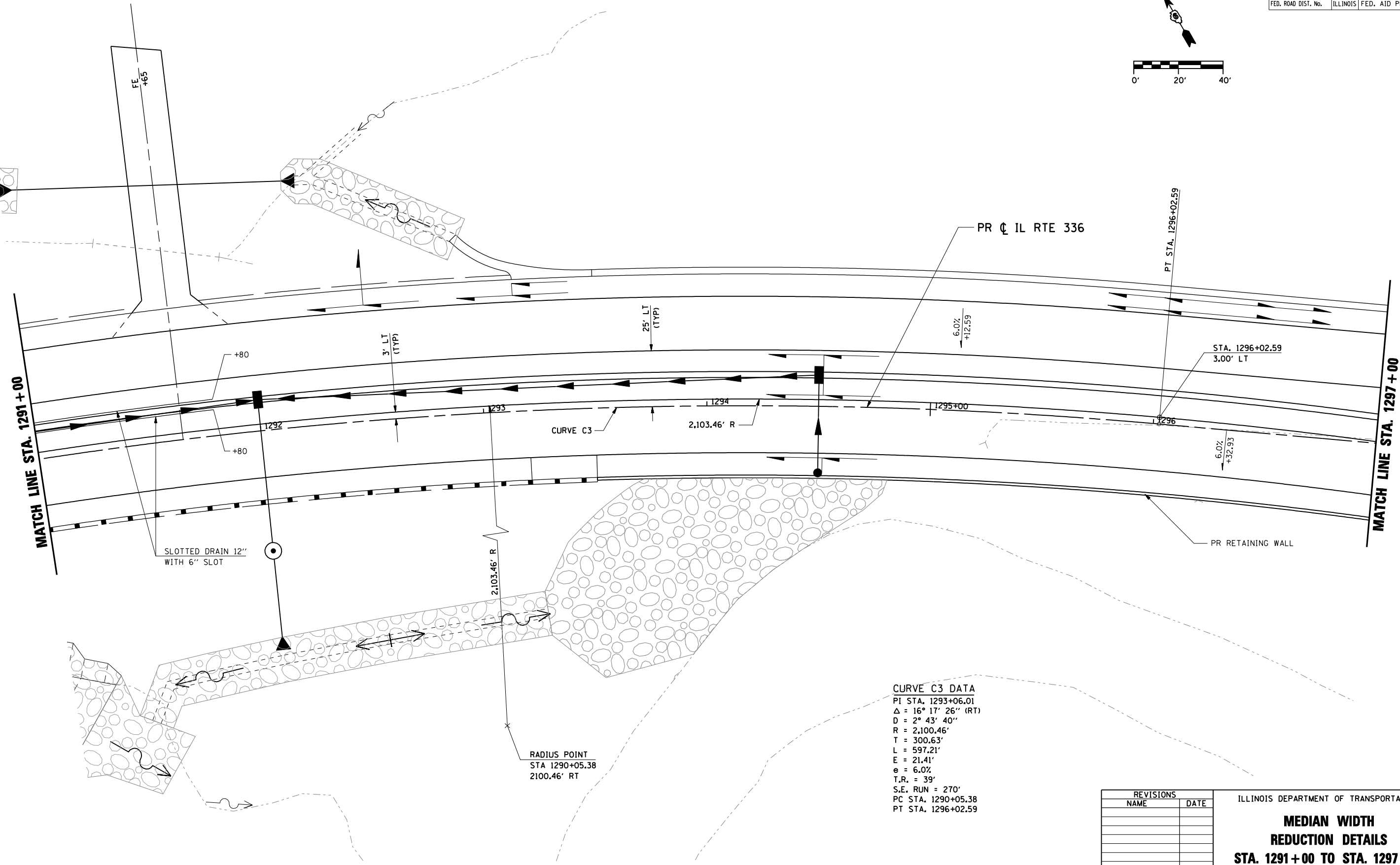
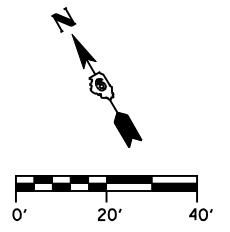


F.A.P. RTE.	SECTION	COUNTY	TOTAL SHEETS	SHEET No.
315	34-5	HANCOCK	612	217
STA. 1291+00		TO STA. 1297+00		
FED. ROAD DIST. No.	ILLINOIS	FED. AID PROJECT		



CURVE C3 DATA
 PI STA. 1293+06.01
 $\Delta = 16^\circ 17' 26''$ (RT)
 D = 2° 43' 40''
 R = 2,100.46'
 T = 300.63'
 L = 597.21'
 E = 21.41'
 e = 6.0%
 T.R. = 39'
 S.E. RUN = 270'
 PC STA. 1290+05.38
 PT STA. 1296+02.59

RADIUS POINT
 STA 1290+05.38
 2100.46' RT

REVISIONS	
NAME	DATE

ILLINOIS DEPARTMENT OF TRANSPORTATION
**MEDIAN WIDTH
 REDUCTION DETAILS**
STA. 1291+00 TO STA. 1297+00
 SCALE: _____ DRAWN BY: RG
 DATE: MARCH 10, 2006 CHECKED BY: JAC

•DGN-SPEC•
 •DATE-TIME•
 •REF01

D6 PROJECT: FILE: .