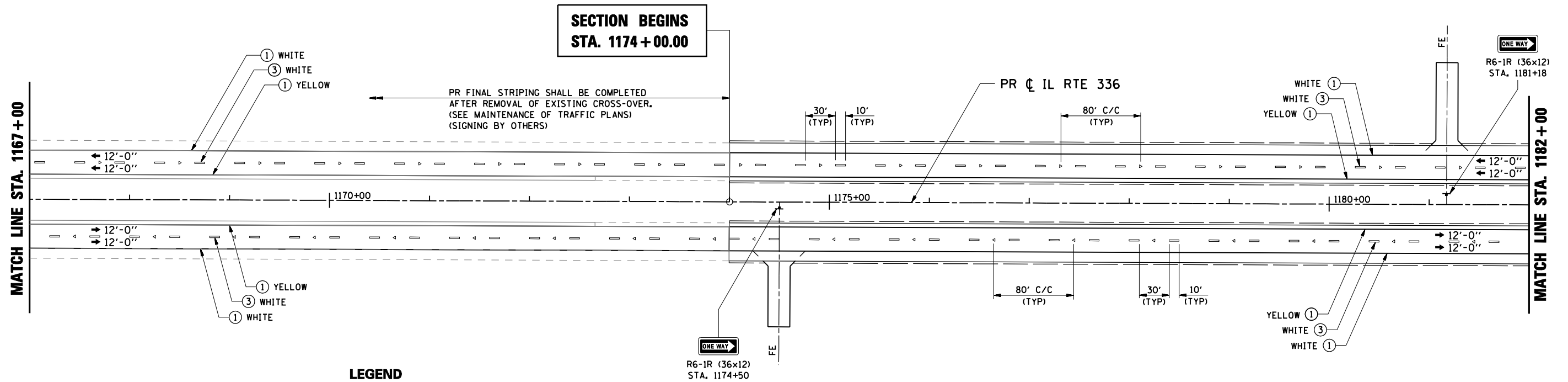
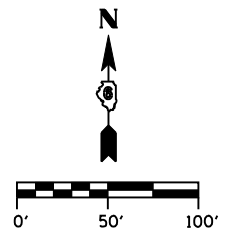


F.A.P. RTE.	SECTION	COUNTY	TOTAL SHEETS	SHEET No.
315	34-5	HANCOCK	612	221
STA. 1167+00		TO STA. 1182+00		
FED. ROAD DIST. No.	ILLINOIS	FED. AID PROJECT		



LEGEND

- ① POLYUREA PAVEMENT MARKING TYPE II - LINE 5"
- ② POLYUREA PAVEMENT MARKING TYPE II - LINE 6"
- ③ PREFORMED PLASTIC PAVEMENT MARKING, TYPE B - LINE 5"
- ④ PREFORMED PLASTIC PAVEMENT MARKING, TYPE B - LINE 24"
- ⑤ POLYUREA PAVEMENT MARKING, TYPE II - LETTERS & SYMBOLS
- ◁ RAISED REFLECTIVE PAVEMENT MARKER (ONE-WAY CRYSTAL)
- ◄ RAISED REFLECTIVE PAVEMENT MARKER (ONE-WAY AMBER)
- ◆ RAISED REFLECTIVE PAVEMENT MARKER (TWO-WAY AMBER)
- SIGN PANEL AND POST
- ▬ PERMANENT TYPE III BARRICADE

REVISIONS	
NAME	DATE

ILLINOIS DEPARTMENT OF TRANSPORTATION
PAVEMENT MARKING & SIGNING PLAN
IL RTE 336
STA. 1167+00 TO STA. 1182+00
 SCALE: _____ DRAWN BY: RG
 DATE: MARCH 10, 2006 CHECKED BY: JAC

•DGN: SPEC•
 •DATE: TIME•
 •REF: 01