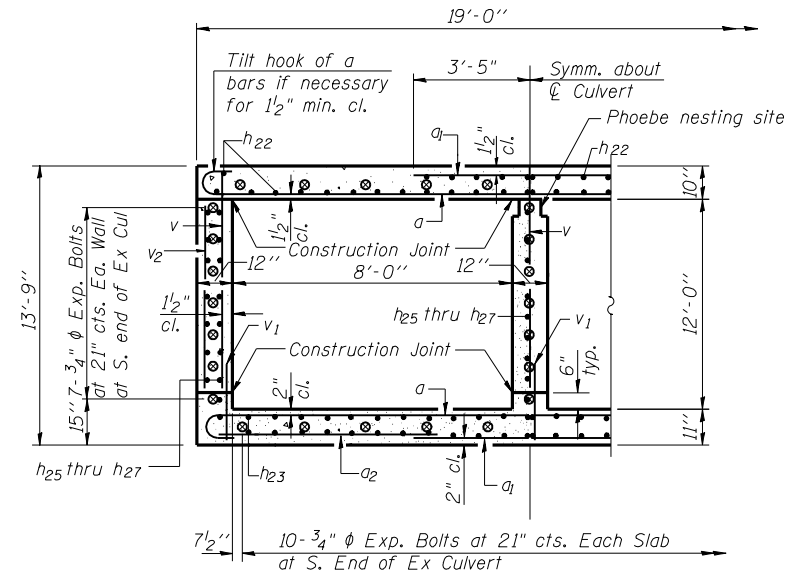
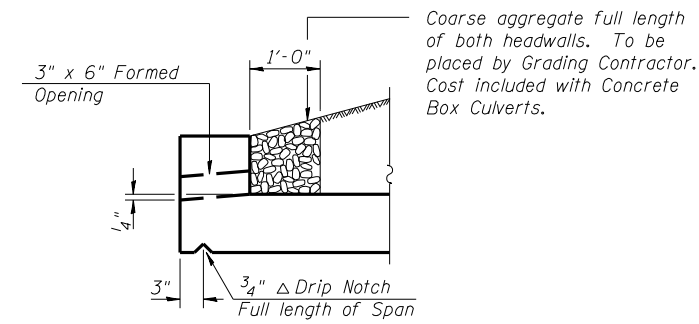


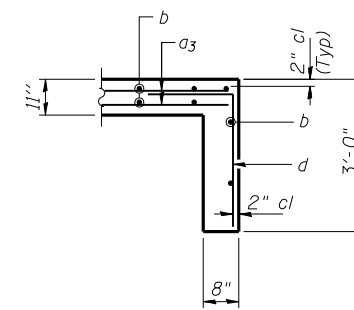
**NOTES:**  
 Bars indicated thus, 2x4-#5 etc. indicates 2 lines of bars with 4 lengths per line.  
 See Sheet 7 of 8 for Bar Details.



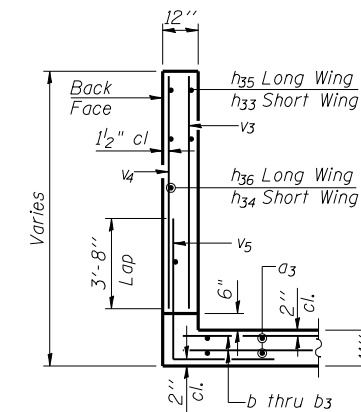
**SECTION A-A**



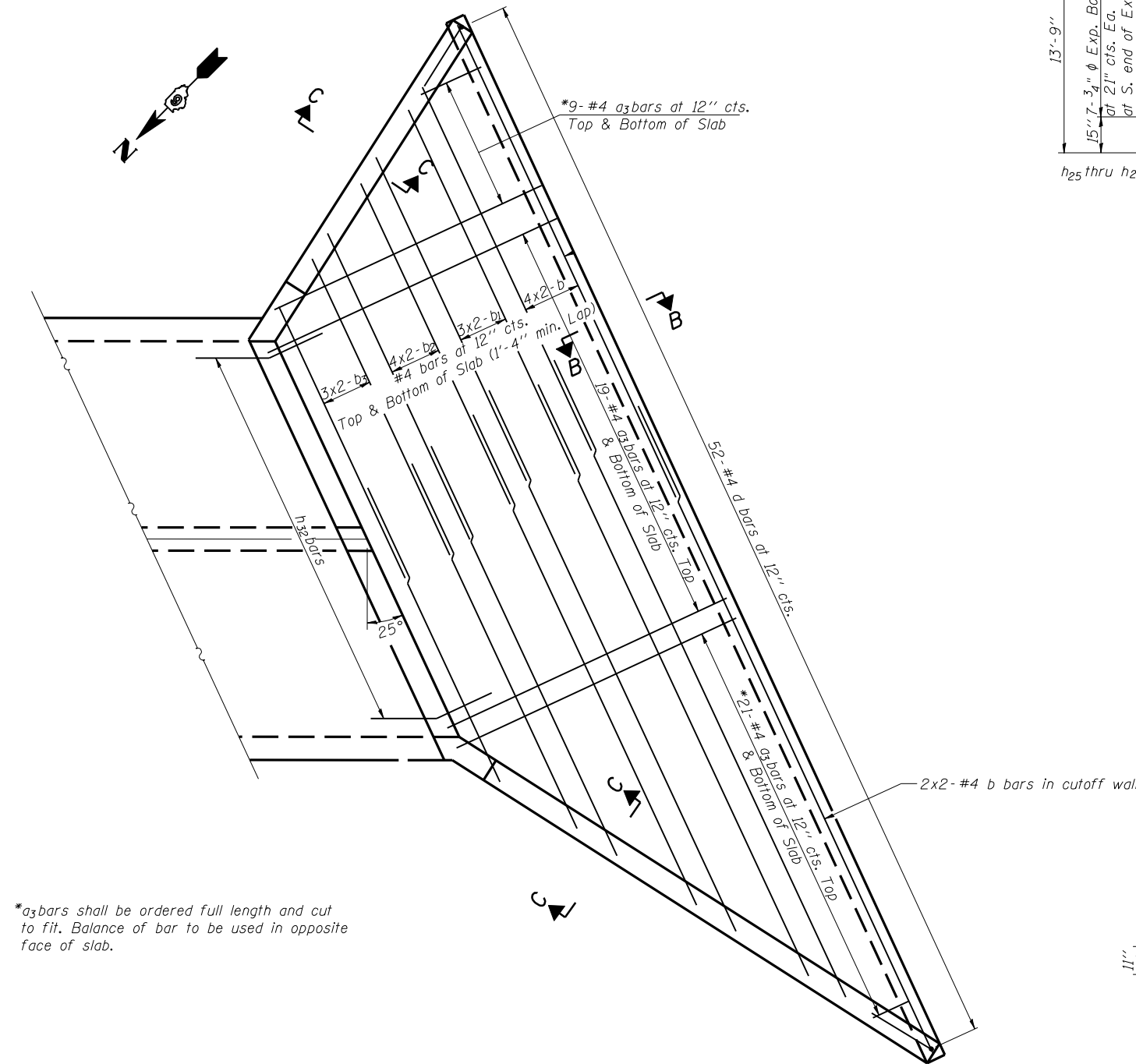
**DRAIN DETAIL AT DOWNSTREAM END**



**SECTION B-B**



**SECTION C-C**



**PARTIAL PLAN AT SOUTH APRON**  
 (Showing apron and cutoff wall reinforcement)

\*a3 bars shall be ordered full length and cut to fit. Balance of bar to be used in opposite face of slab.

**BILL OF MATERIAL SOUTH EXTENSION**

Bar	No.	Size	Length	Shape
a	321	#5	19'-2"	U
a1	336	#8	6'-10"	—
a2	168	#4	7'-3"	—
a3	68	#4	12'-11"	—
a4	18	#4	14'-5"	U
a5	36	#5	10'-9"	U
b	20	#4	26'-6"	—
b1	12	#4	21'-11"	—
b2	16	#4	18'-6"	—
b3	12	#4	13'-10"	—
d	71	#4	4'-4"	—
h20	66	#5	25'-8"	—
h21	104	#4	25'-8"	—
h22	66	#5	28'-8"	—
h23	52	#4	28'-8"	—
h24	120	#8	26'-8"	—
h25	48	#8	25'-8"	—
h26	24	#8	27'-8"	—
h27	48	#8	29'-8"	—
h28	24	#8	17'-4"	—
h29	12	#8	12'-9"	—
h30	24	#8	8'-2"	—
h31	18	#6	10'-11"	—
h32	52	#4	3'-4"	—
h33	14	#4	15'-4"	—
h34	7	#4	18'-6"	—
h35	14	#4	24'-4"	—
h36	7	#4	27'-6"	—
h37	52	#4	3'-0"	—
h38	33	#5	3'-8"	—
h39	26	#4	7'-3"	—
h40	26	#4	17'-3"	—
h41	1	#5	7'-7"	—
h42	12	#5	17'-3"	—
h43	5	#5	7'-9"	—
h44	5	#5	16'-8"	—
h45	11	#5	7'-3"	—
v	636	#6	11'-11"	—
v1	636	#6	2'-6"	—
v2	117	#5	11'-2"	—
v3	6	#4	19'-3"	—
v4	31	#8	19'-3"	—
v5	62	#8	8'-9"	—
Concrete Box Culverts		Cu. Yd.	336.0	
Reinforcement Bars		Pound	61,980	
3/4" Expansion Bolts		Each	41	

ILLINOIS DEPARTMENT OF TRANSPORTATION

SHEET TITLE: CULVERT DETAILS-S. EXTENSION

PROJECT: IL. RTE. 336 OVER TRIB TO LA MOINE RIVER  
 FAP ROUTE 315 SECTION 34-5 (5B)  
 HANCOCK COUNTY  
 STATION 1318+53.88  
 STRUCTURE NUMBER 034-7001

PROJECT NO. 02076-4  
 DATE 03/20/06  
 DRAWN BY TFG  
 CHECKED BY CME/MCB  
 DRAWING NO.

**COOMBE-BLOXDORF P.C.**  
 Engineers/Land Surveyors  
 Springfield, Illinois  
 Design Firm License No. 184-002708

6  
 OF 8 SHTS