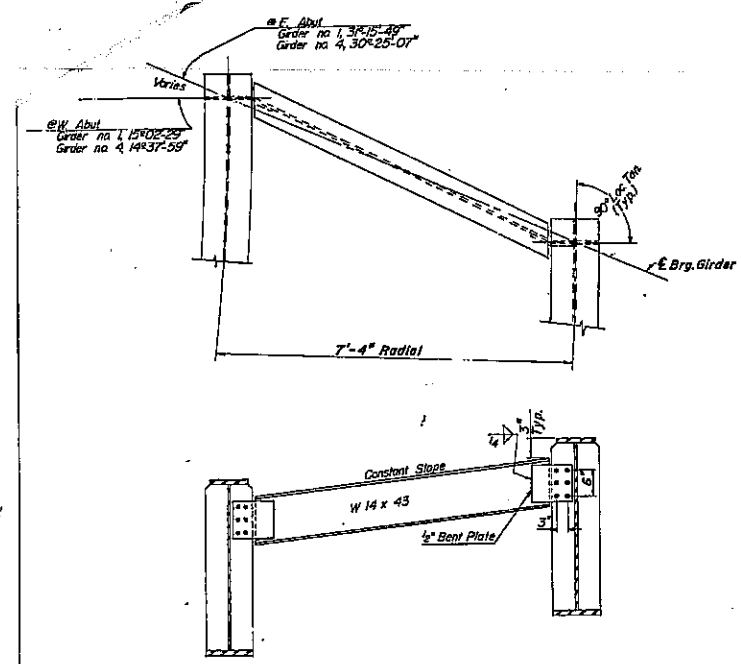


STATE OF ILLINOIS
DEPARTMENT OF TRANSPORTATION

SHEET 11 OF 11
CONTRACT 72A29

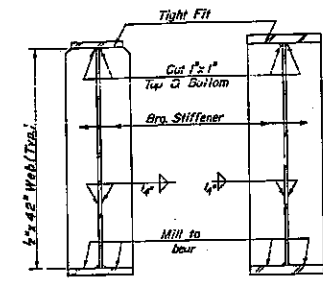
ROUTE NO.	SECTION	QUANTITY	TOTAL QUANTITY	SHEET NO.	TOTAL SHEETS
S.A. 1-55	B4-4HB	LOGAN	63	40	58 SHEETS
FED. ROAD DIST. NO. 1	ALPINE	LOGAN COUNTY			



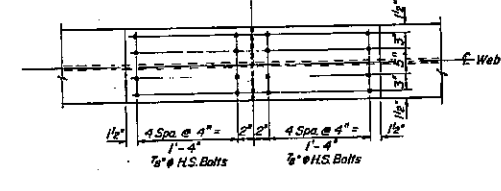
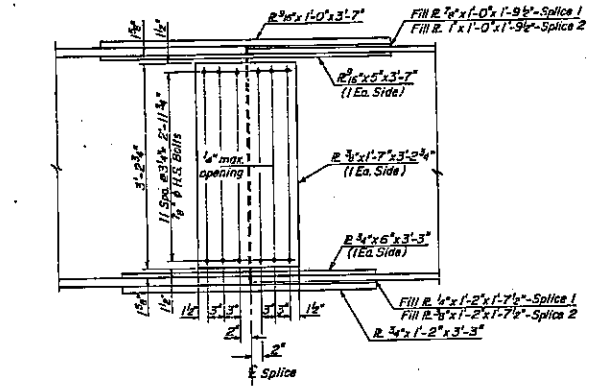
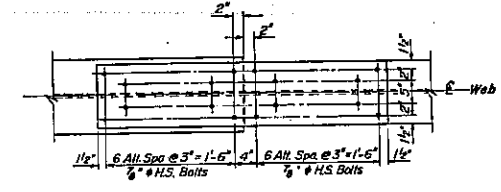
DIAPHRAGM D
6 Req'd

3/8" x 4" Granular or solid flux filled headed studs automatically and welded to flange.
No req'd, 525 Ea Girder

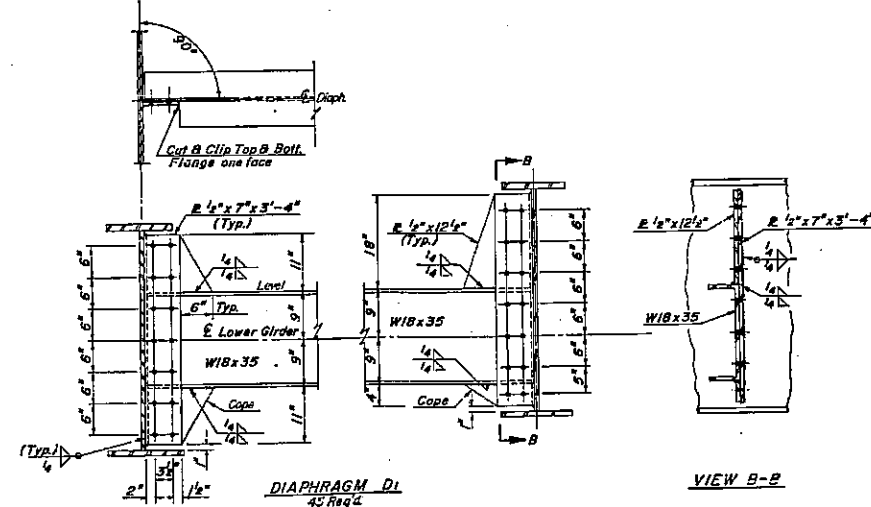
SECTION A-A



SECTION AT ABUTMENT
SECTION AT PIER



SPLICE #1 B #2



DIAPHRAGM D1
45 Req'd
1/2" # H.S. Bolts

VIEW B-B

DESIGNED	D.V.K.	EXAMINED	
CHECKED	G.E.P.	PASSED	
DRAWN	J.J.T.	APPROVED	

STRUCTURAL STEEL DETAILS
FA. 1-55 SEC. 54-4HB
RDWY "D"
LOGAN COUNTY
STA. 16+93.48

LOGAN COUNTY
STA. 16+93.48

SN 054-0051
EXISTING BRIDGE PLANS
FOR INFORMATION ONLY
(NOT TO SCALE)