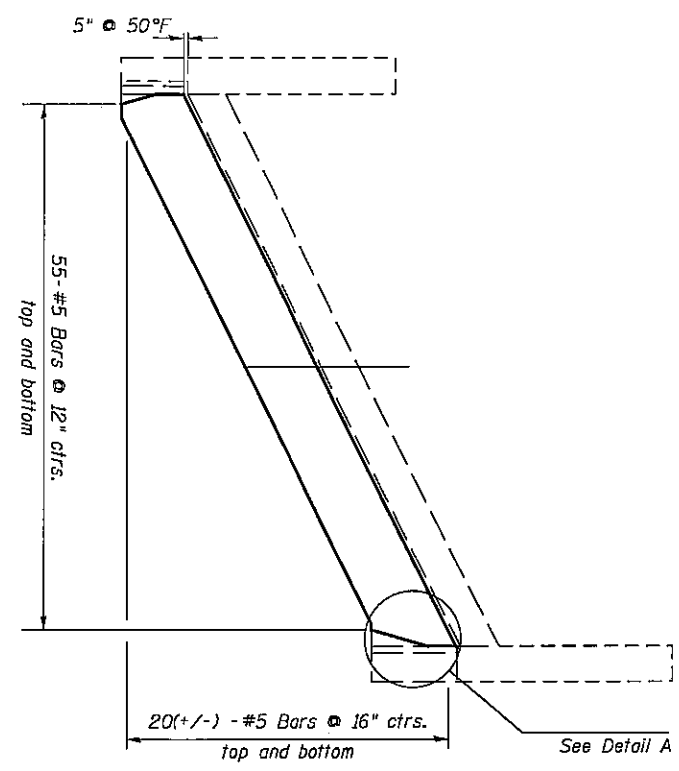
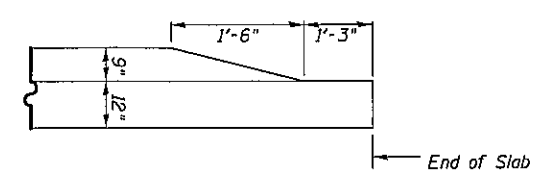


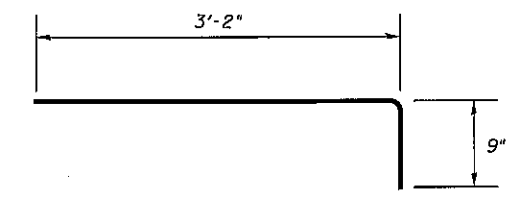
F.A.I. RTE.	SECTION	COUNTY	TOTAL SHEETS	SHEET NO.
55	(54-4B)I-3	LOGAN	10	7
STA. _____		TO STA. _____		
FED. ROAD DIST. NO. 6 ILLINOIS FED. AID PROJECT _____				
BRIDGE SHEET 4 OF 7 CONTRACT 72A32				



**NORTH ABUTMENT PLAN
SHOWING EXISTING REINFORCEMENT**

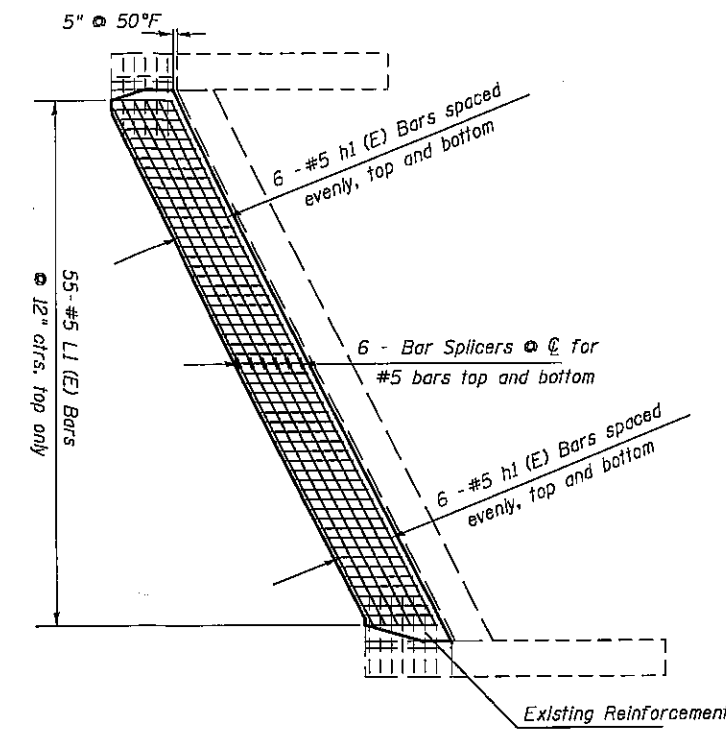


DETAIL A

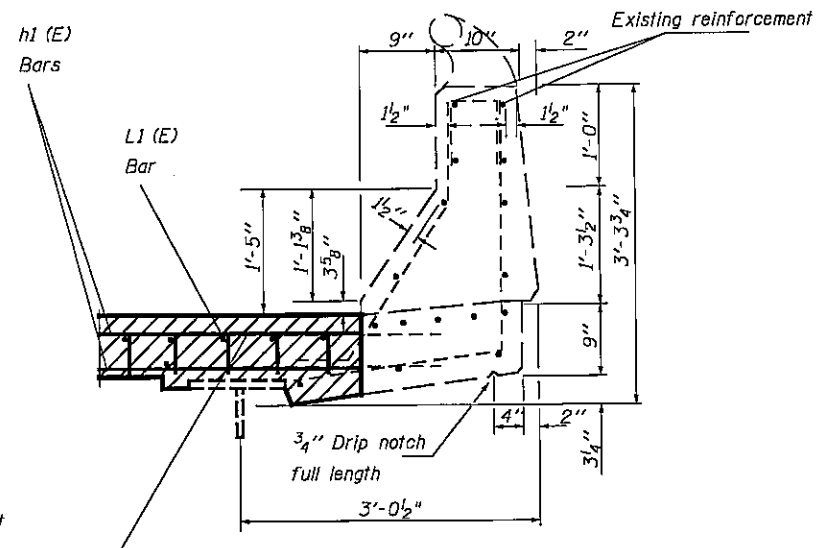


L(E) BAR DETAIL

* Existing longitudinal reinforcement shall be cleaned, straightened and incorporated into the new construction. Existing transverse reinforcement may be cut and removed.

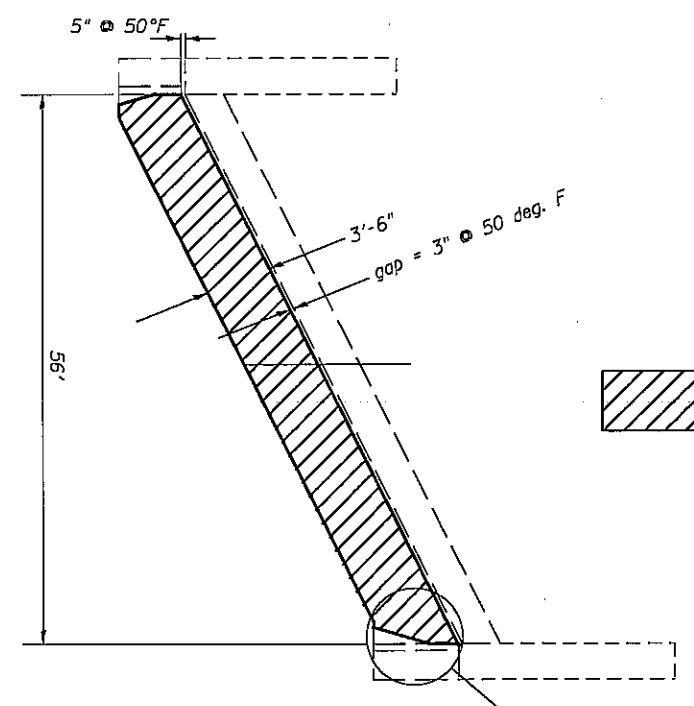


**NORTH ABUTMENT PLAN
SHOWING PROPOSED REINFORCEMENT**

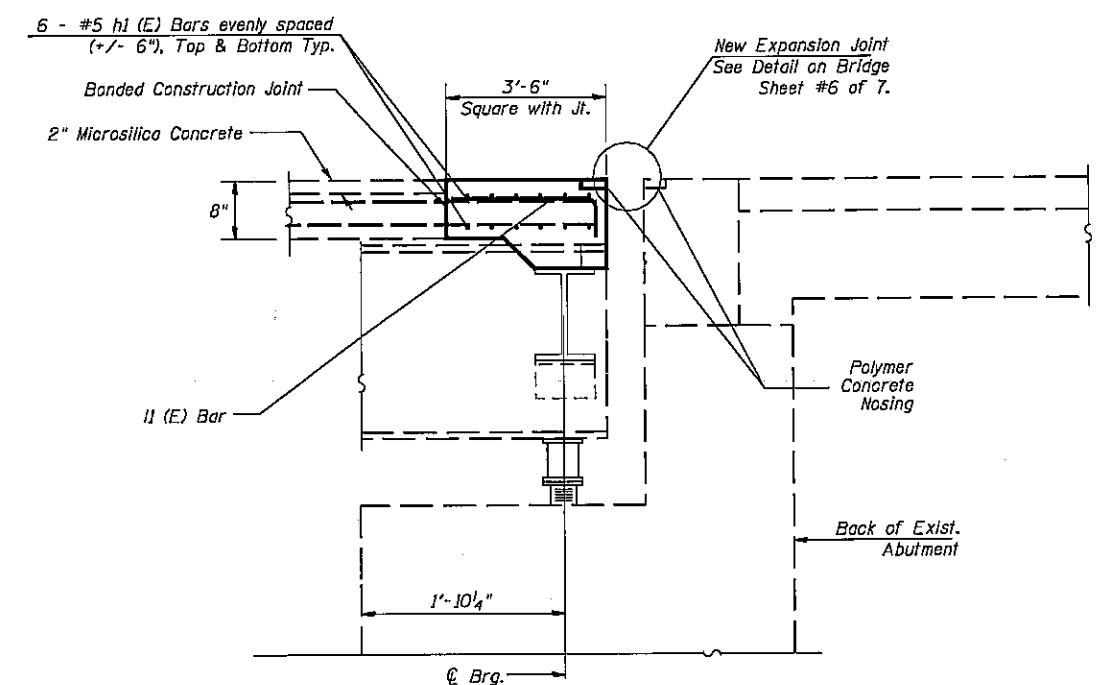


SECTION THRU PARAPET

Existing transverse bars protruding from parapet shall be a minimum of 24" long after cut-off



**NORTH ABUTMENT PLAN
SHOWING CONCRETE REMOVAL &
SUPERSTRUCTURE DIMENSIONS**



TYPICAL SECTION THRU ABUTMENT
(Dimensions measured at Rt. Ls.)

BILL OF MATERIAL

Bar	No.	Size	Length	Shape
h1 (E)	24	#5	30'-0"	—
L1 (E)	55	#5	3'-11"	┌
Silicone Jt. Sealer		Feet	61.8	
Polymer Concrete		Cu. Ft.	2.25	
Concrete Superstruc.		Cu. Yd.	8.05	
Reinforcement Bars, Epoxy Coated		Pound	996	

Reinforcement bars designated (E) shall be epoxy coated.

NOT TO SCALE

STATE OF ILLINOIS
DEPARTMENT OF TRANSPORTATION
**SUPERSTRUCTURE NORTH ABUT.
SOUTH BOUND LANES**

LOGAN COUNTY
SECTION (54-4B)I-3
STATION 376+75.00
STRUCTURE No. 054-0048
JOINT REPLACEMENT DETAIL