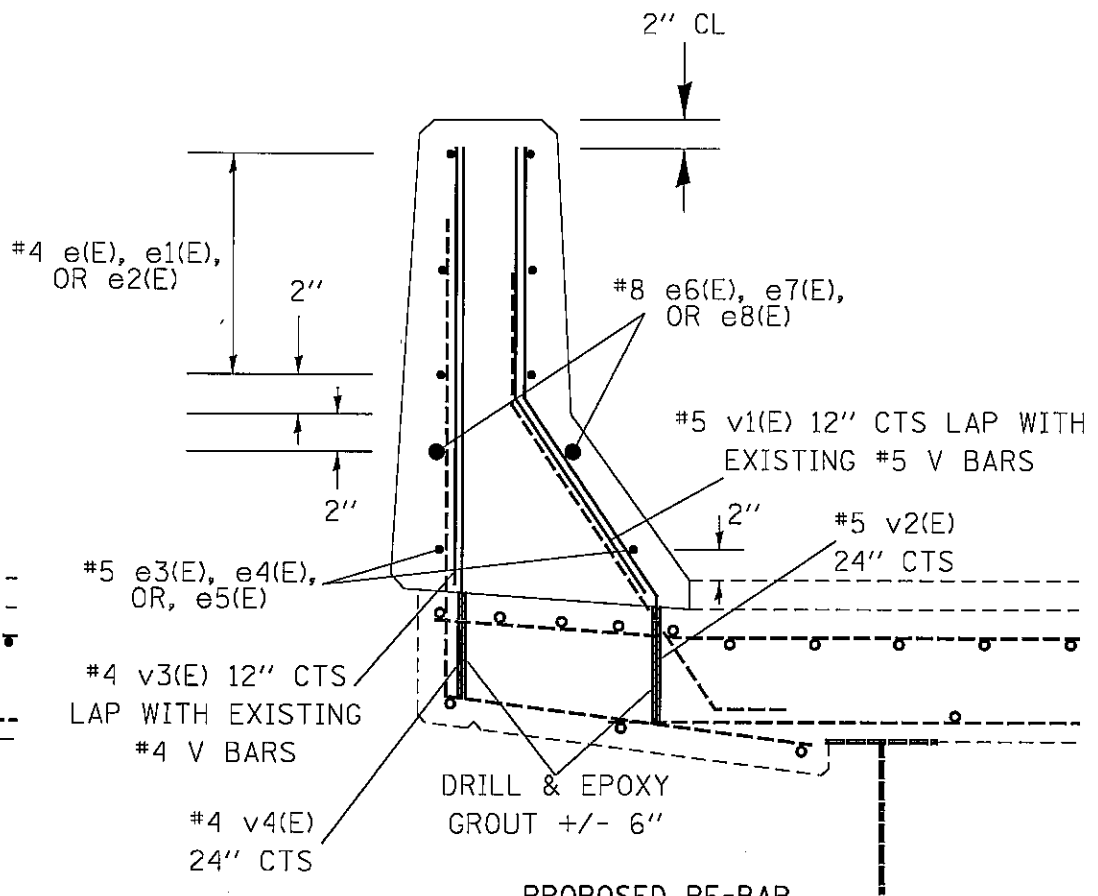
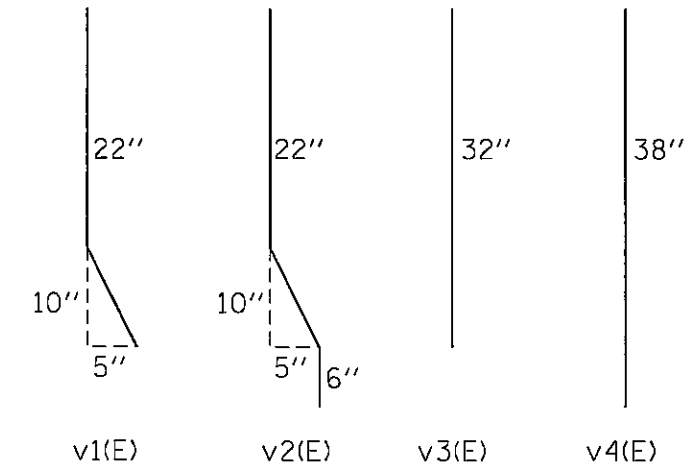


EXISTING RE-BAR CROSS SECTION



PROPOSED RE-BAR CROSS SECTION

BAR SHAPE DETAILS



eX(E) VARIES

NOTES:

EXISTING RE-BAR DEPTHS WILL VARY DEPENDING ON THE DEPTH OF CONCRETE ACTUALLY REMOVED DURING CONST.

v2(E) AND v4(E) BARS SHALL BE DRILLED AND EPOXY GROUTED IN PLACE ACCORDING TO ARTICLE 584 OF THE STANDARD SPECIFICATIONS. DRILLING DEPTH SHALL BE APPROXIMATELY DOWN TO THE BOTTOM LAYER OF DECK STEEL (+/- 6"). v2(E) AND v4(E) BARS SHALL ALTERNATE WITH EACH OTHER AS DETAILED IN THE PLAN DRAWING ON THE FOLLOWING SHEET.

THE CURVED END SECTIONS OF EXISTING RAIL SHALL BE SALVAGED AND REMAIN IN IDOT POSSESSION. AFTER REMOVAL, THE CONTRACTOR SHALL CONTACT DAVE COPENBARGER AT (217) 785-5306 FOR RETRIEVAL OF THE END SECTIONS. ALL OTHER SECTIONS OF RAIL SHALL BE DISPOSED OF BY THE CONTRACTOR. THE CONTRACTOR SHALL INCLUDE THE COST OF THE RAIL REMOVAL AND DISPOSAL IN THE BID PRICE FOR CONCRETE REMOVAL.

CONTRACT 72A37
EXISTING & PROPOSED
RE-BAR DETAILS
(NOT TO SCALE)