

F.A.I. RTE.	SECTION	COUNTY	TOTAL SHEETS	SHEET NO.
155 & FAU 7706 REPAIR 2007	D-6 BRIDGE	LOGAN	12	1

STATE OF ILLINOIS
DEPARTMENT OF TRANSPORTATION
DIVISION OF HIGHWAYS

**PROPOSED
HIGHWAY PLANS**

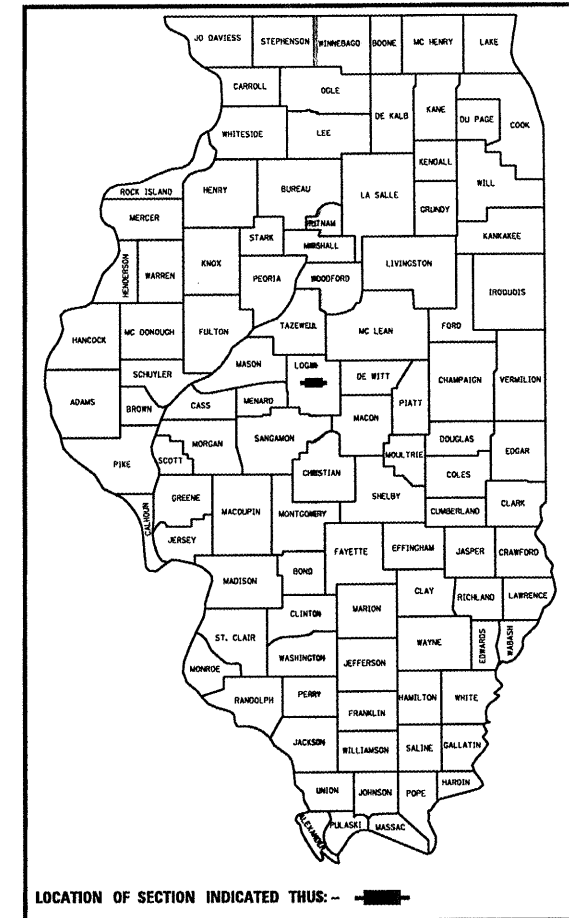
FAI ROUTE 155 (I-155) &
FAU ROUTE 7706 (BUS. 55)
SECTION D 6 BRIDGE REPAIR 2007
PROJECT C-96-003-07
LOGAN COUNTY

FOR INDEX OF SHEETS, SEE SHEET NO. 2

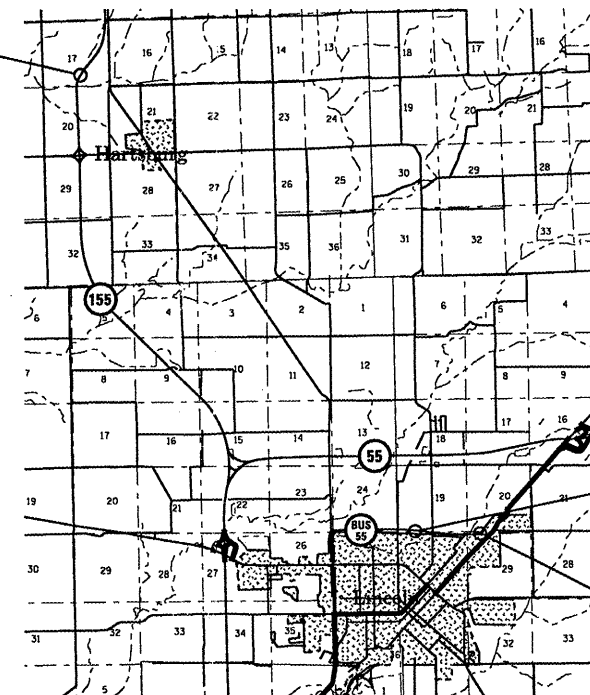
ADT

I-155 = 8600

D-96-015-06



SN 054-0076



SN 054-0104

SN 054-9901

NET LENGTH OF SECTION: 400' = 0.08 MI

OPERATIONS DESIGN & PLANNING ENGINEER
CECIL DOWNING - (217) 785-4036

BRIDGE INSPECTION ENGINEER
DAVE COPENBARGER - (217) 785-5306

J.U.L.I.E.
JOINT UTILITY LOCATION INFORMATION FOR EXCAVATION
1-800-892-0123

CONTRACT NO. 72A38

STATE OF ILLINOIS
DEPARTMENT OF TRANSPORTATION
DIVISION OF HIGHWAYS

SUBMITTED March 28, 2006
Chris M. Reed
DEPUTY DIRECTOR OF HIGHWAYS, REGION ENGINEER

May 12, 2006
Mike Hene
ENGINEER OF DESIGN AND ENVIRONMENT

May 12, 2006
William P. Sees P.E.
DIRECTOR OF HIGHWAYS, CHIEF ENGINEER

PRINTED BY THE AUTHORITY
OF THE STATE OF ILLINOIS

INDEX OF SHEETS

- 1 COVER SHEET
- 2 INDEX, GENERAL NOTES,
MIX DESIGNS, & SIGNATURES
- 3 SUMMARY OF QUANTITIES
- 4 TYPICAL SECTIONS
- 5 SURVEY POINTS
- 6-11 PLAN AND PROFILE VIEWS

STANDARDS

- 701101-01
- 701106-01
- 701400-02
- 701406-04
- 701421-01
- 702001-06

GENERAL NOTES:

A STRING LINE SHALL BE USED DURING ALL PAVING OPERATIONS TO ENSURE SMOOTHNESS.

THE CONTRACTOR SHALL INCLUDE THE PRICE OF BUTT JOINTS IN THE BID PRICE FOR SURFACE REMOVAL UNLESS OTHERWISE DETAILED IN THE PLANS.

THE PROPOSED PAINT MARKING LOCATIONS SHALL MATCH THE EXISTING PAINT PRESENT ON THE PAVEMENT.

**STATE OF ILLINOIS
DEPARTMENT OF TRANSPORTATION
DIVISION OF HIGHWAYS
DISTRICT 6**

EXAMINED March 23 2006
Sam J. Hoan
ENGINEER OF OPERATIONS

EXAMINED March 23 2006
W.P. Frey
ENGINEER OF PROGRAM IMPLEMENTATION

EXAMINED MARCH 27 2006
William E. Mote
ENGINEER OF PROGRAM DEVELOPMENT

LOCATION	MIX USE	PG	RAP% (MAX)	DESIGN AIR VOIDS	GRADATION	FRICITION AGG.
I-155	BIT. SURF.	SBS PG 70-22	0%	4.0% @ N DESIGN = 90	IL 9.5 OR 12.5	MIX D
BUS. 55	BIT. SURF.	PG 64-22	15%	4.0% @ N DESIGN = 50	IL 9.5 OR 12.5	MIX D
I-155	SHLDRS.	PG 58-22	15%	2.0% @ N DESIGN = 50	BAM	N/A

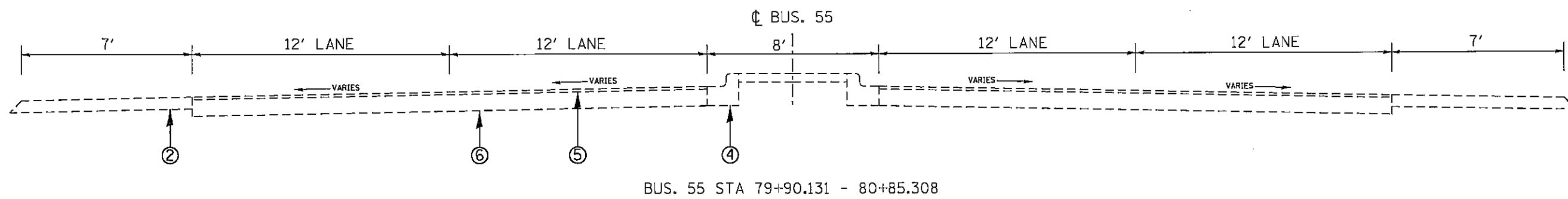
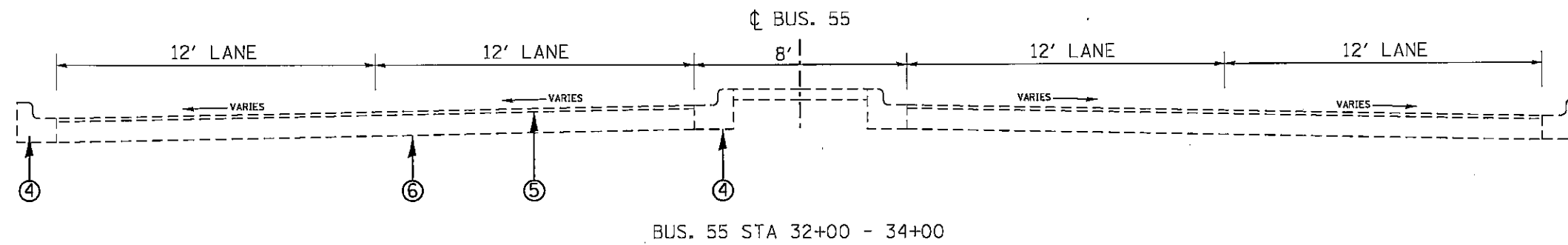
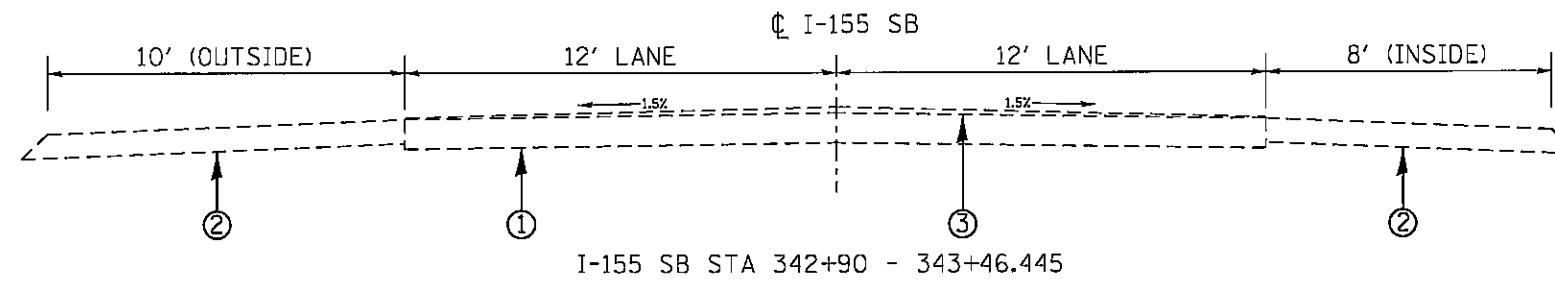
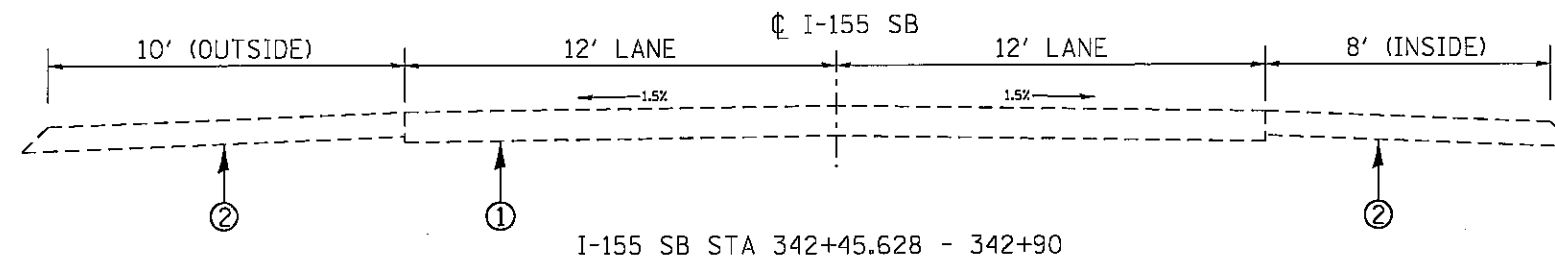
INDEX OF SHEETS,
GENERAL NOTES,
MIX DESIGNS, &
SIGNATURES

SUMMARY OF QUANTITIES

ITEM	DESCRIPTION	UNIT	QTY.	100% STATE SFTY-2A
40600200	BITUMINOUS MATERIALS - PRIME COAT	TON	0.8	0.8
40600985	PORTLAND CEMENT CONCRETE SURFACE REMOVAL - BUTT JOINT	SQ YD	160	160
40600990	TEMPORARY RAMP	SQ YD	27	27
44000006	BITUMINOUS SURFACE REMOVAL, 1-1/2"	SQ YD	1070	1070
44000030	BITUMINOUS SURFACE REMOVAL (VARIABLE DEPTH)	SQ YD	600	600
48202000	BITUMINOUS SHOULDERS SUPERPAVE	TON	17	17
60260100	INLETS TO BE ADJUSTED	EACH	2	2
67100100	MOBILIZATION	L SUM	1	1
70100310	TRAFFIC CONTROL AND PROTECTION, STANDARD 701421	L SUM	1	1
70100700	TRAFFIC CONTROL AND PROTECTION, STANDARD 701406	L SUM	1	1
70300100	SHORT-TERM PAVEMENT MARKING	FOOT	61	61
*78001120	PAINT PAVEMENT MARKING - LINE, 5"	FOOT	1510	1510
78300200	RAISED REFLECTIVE PAVEMENT MARKER REMOVAL	EACH	10	10
X4066424	BITUMINOUS CONCRETE SURFACE COURSE, SUPERPAVE, MIX "D", N50	TON	128	128
X4066528	POLYMERIZED BITUMINOUS CONCRETE SURFACE COURSE, SUPERPAVE, MIX "D", N90	TON	35	35

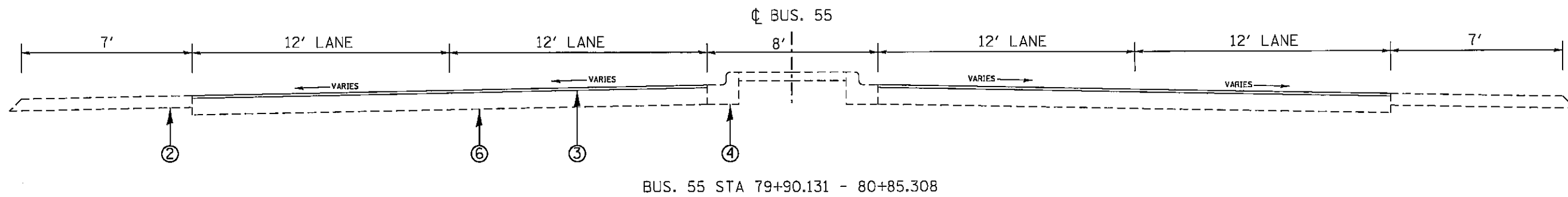
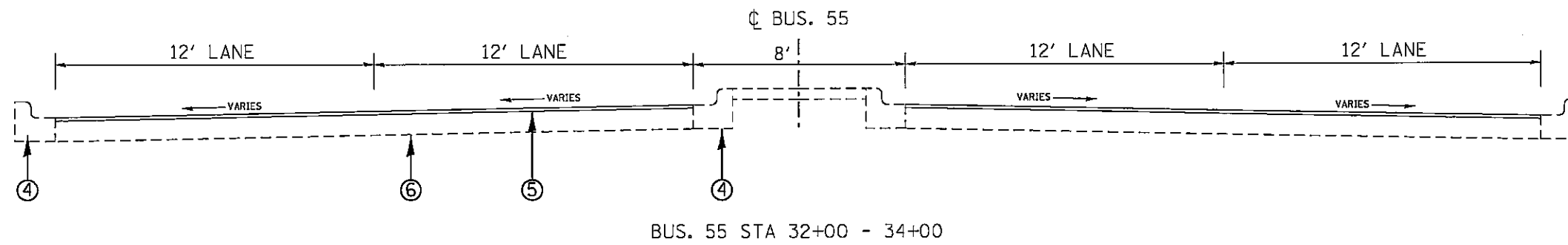
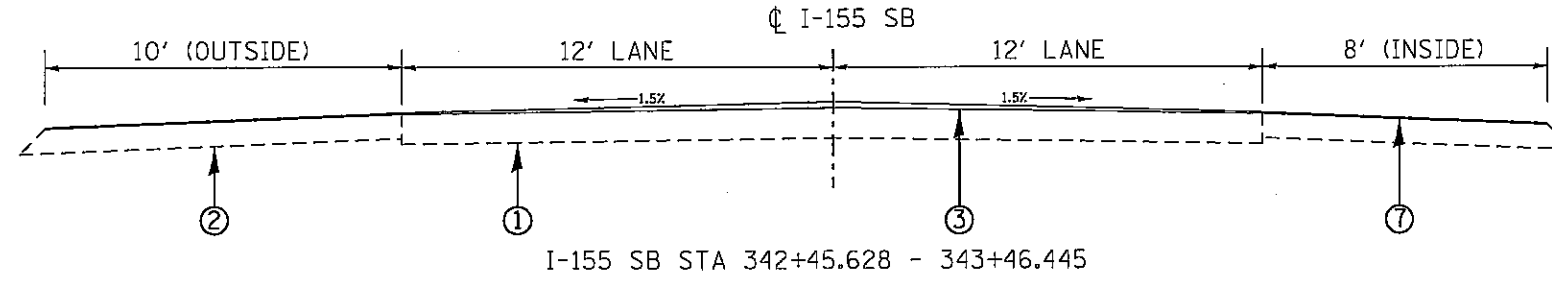
SUMMARY OF
QUANTITIES

*SPECIALTY ITEMS



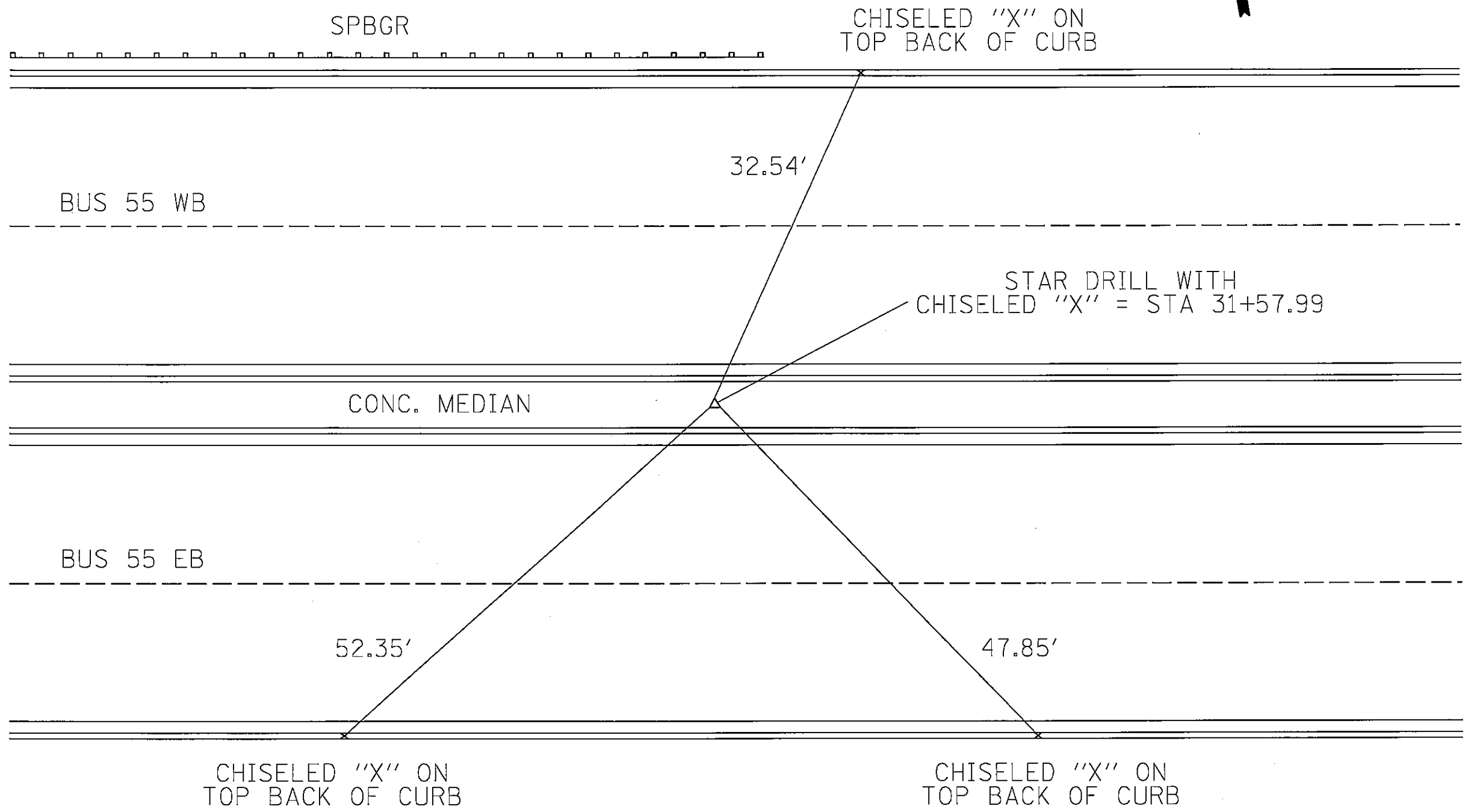
- ① 10" PCC BRIDGE APPROACH PAVEMENT
- ② 8" BITUMINOUS SHOULDER
- ③ VARIABLE DEPTH BITUMINOUS OVERLAY
- ④ PCC CURB AND GUTTER
- ⑤ BITUMINOUS SURFACE
- ⑥ 10" PCC PAVEMENT

EXISTING
TYPICAL
SECTIONS
(NOT TO SCALE)

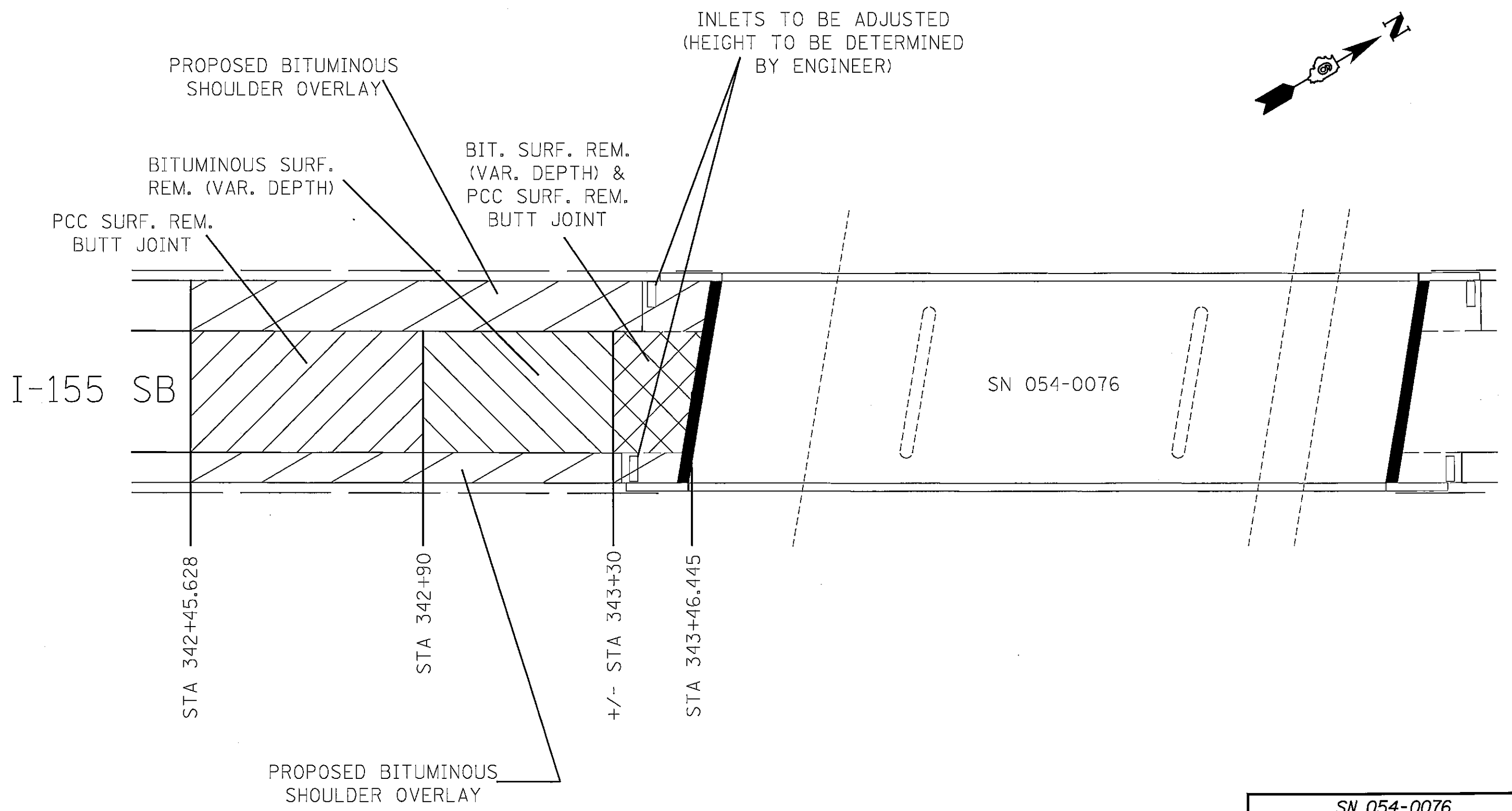
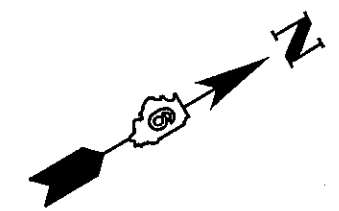


- ① EXISTING 10" PCC BRIDGE APPROACH PAVEMENT
- ② EXISTING 8" BITUMINOUS SHOULDER
- ③ PROPOSED VARIABLE DEPTH BITUMINOUS OVERLAY
- ④ EXISTING PCC CURB AND GUTTER
- ⑤ PROPOSED 1-1/2" BITUMINOUS OVERLAY
- ⑥ EXISTING 10" PCC PAVEMENT
- ⑦ PROPOSED VARIABLE DEPTH BITUMINOUS SHOULDER OVERLAY

PROPOSED
TYPICAL
SECTIONS
(NOT TO SCALE)

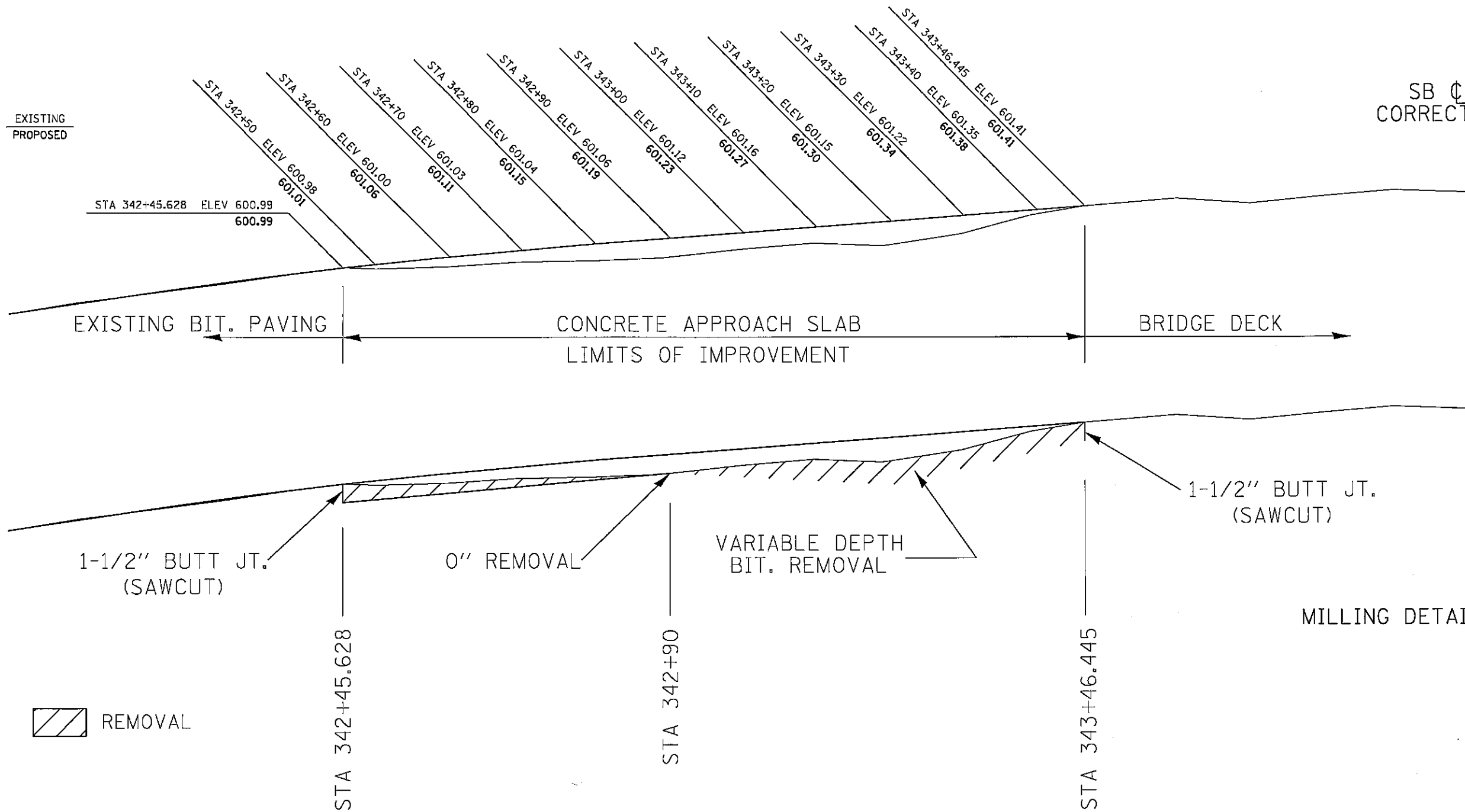


SN 054-9901
CROSS TIED POINT
FOR STATIONING
(NOT TO SCALE)



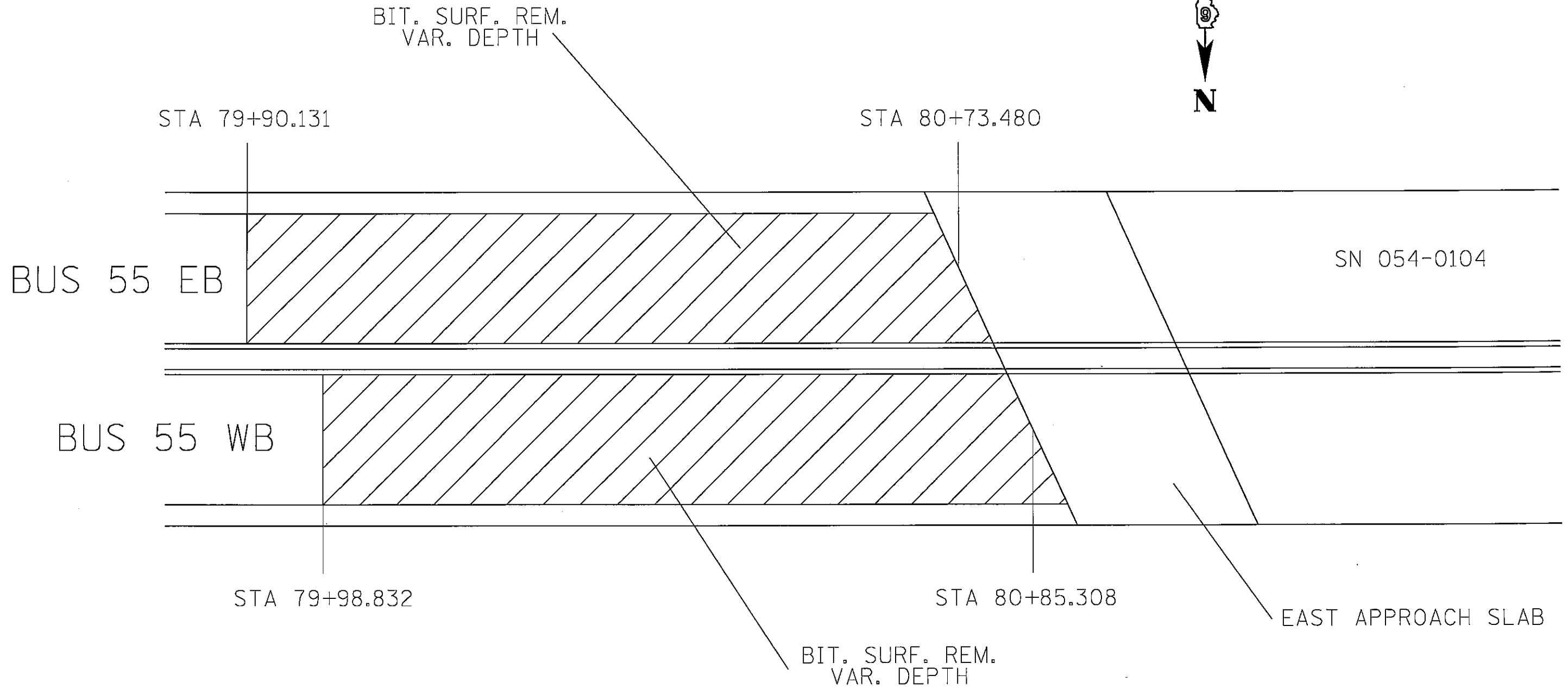
SN 054-0076
PLAN VIEW
(NOT TO SCALE)

SB ∇ PROFILE
CORRECTION DETAIL



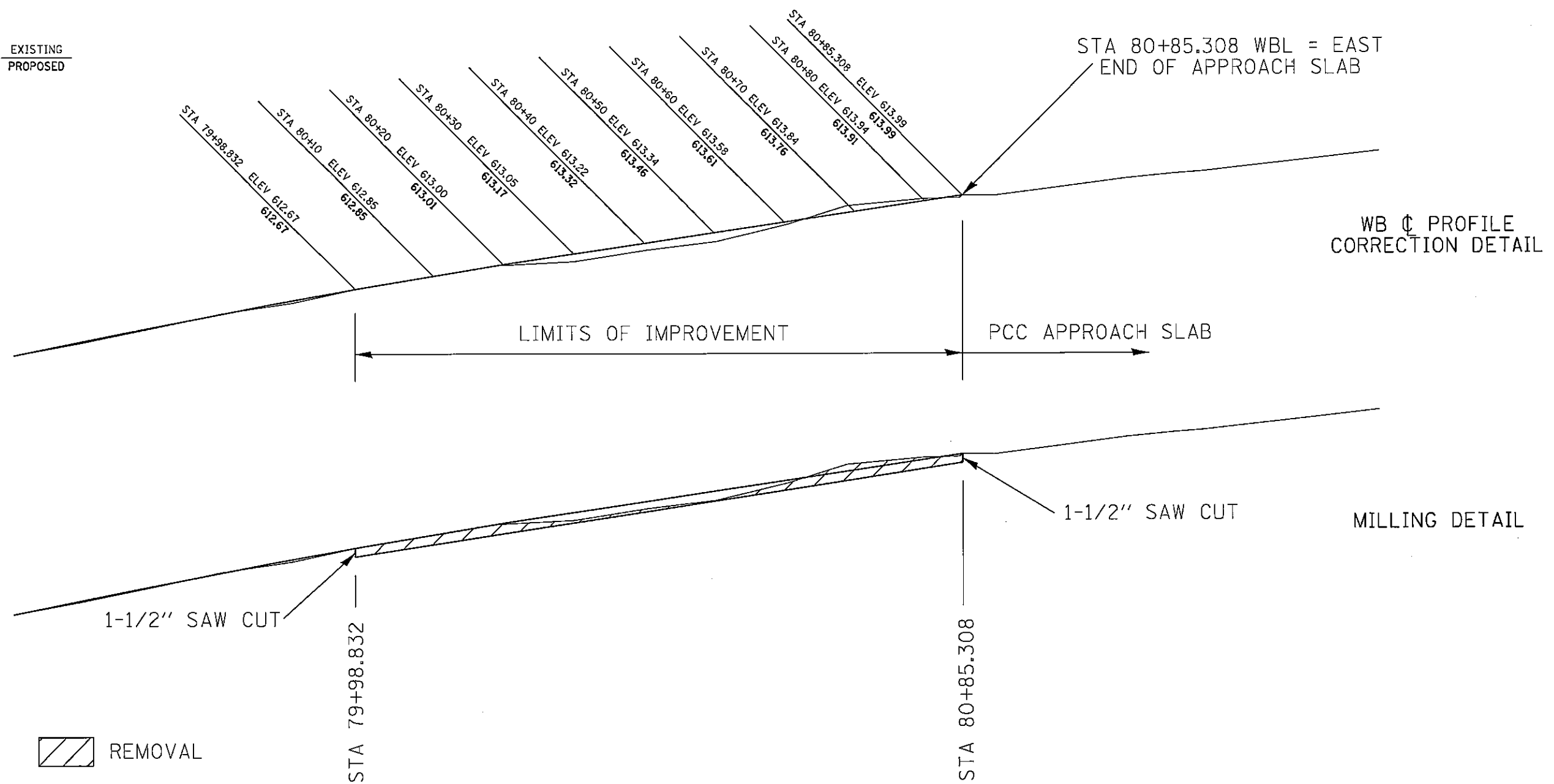
NOTES:
 COMPLETELY REMOVE ALL BITUMINOUS OVERLAY BETWEEN STA 342+90 AND BRIDGE DECK. THE CONTRACTOR SHALL MILL DEEP ENOUGH TO ENSURE A MINIMUM OF 1-1/2" BITUMINOUS SURFACE REPLACEMENT AT ALL LOCATIONS. THE EXISTING CONCRETE COVER OVER THE APPROACH SPAN REINFORCING STEEL IS 3-1/2". CROSS-SLOPES SHALL MATCH THE EXISTING SLOPES AT EACH BUTT JOINT. IF ANY VARIATION EXISTS, THE CONTRACTOR SHALL PRO-RATE THE CHANGE IN SLOPE SUCH THAT THE DIFFERENCE IS EVENLY DISTRIBUTED THROUGHOUT THE OVERLAY SECTION. THE BITUMINOUS SHOULDER OVERLAY SHALL TAPER DOWN TO 1/2" ON BOTH ENDS AND AT THE OUTSIDE EDGE. THE CONTRACTOR SHALL INCLUDE THE PRICE OF SAW CUTTING IN THE BID PRICE FOR MILLING.

SN 054-0076
SB GRADE
CORRECTION
DETAILS



SN 054-0104
PLAN VIEW
(NOT TO SCALE)

EXISTING
PROPOSED

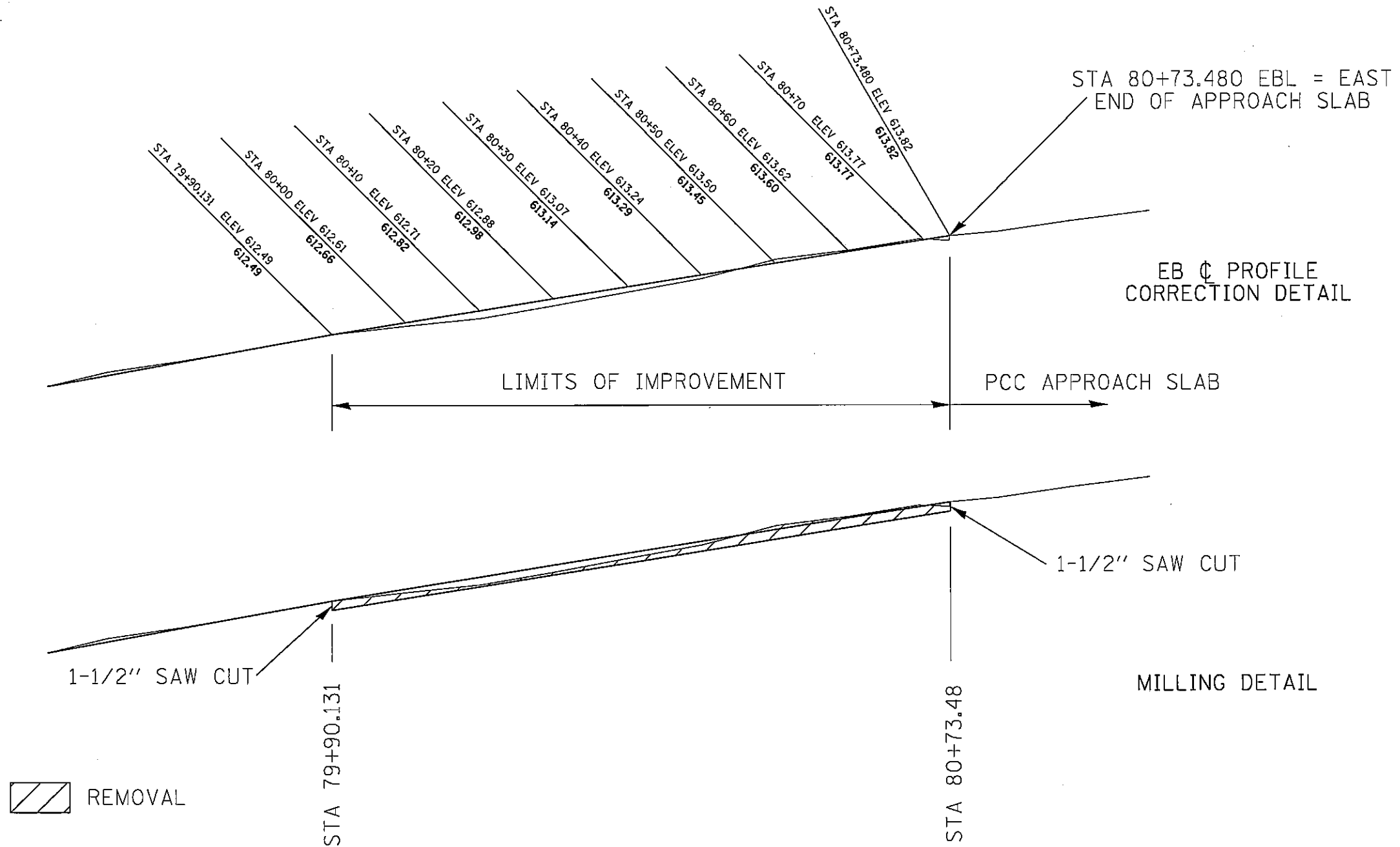


 REMOVAL

NOTES:
THE CONTRACTOR SHALL MILL DEEP ENOUGH TO ENSURE A MINIMUM OF 1-1/2" BITUMINOUS SURFACE REPLACEMENT AT ALL LOCATIONS. CROSS-SLOPES SHALL MATCH THE EXISTING SLOPES AT EACH BUTT JOINT. IF ANY VARIATION EXISTS, THE CONTRACTOR SHALL PRO-RATE THE CHANGE IN SLOPE SUCH THAT THE DIFFERENCE IS EVENLY DISTRIBUTED THROUGHOUT THE OVERLAY SECTION. THE CONTRACTOR SHALL INCLUDE THE PRICE OF SAW CUTTING IN THE BID PRICE FOR MILLING.

SN 054-0104
WB GRADE
CORRECTION
DETAILS

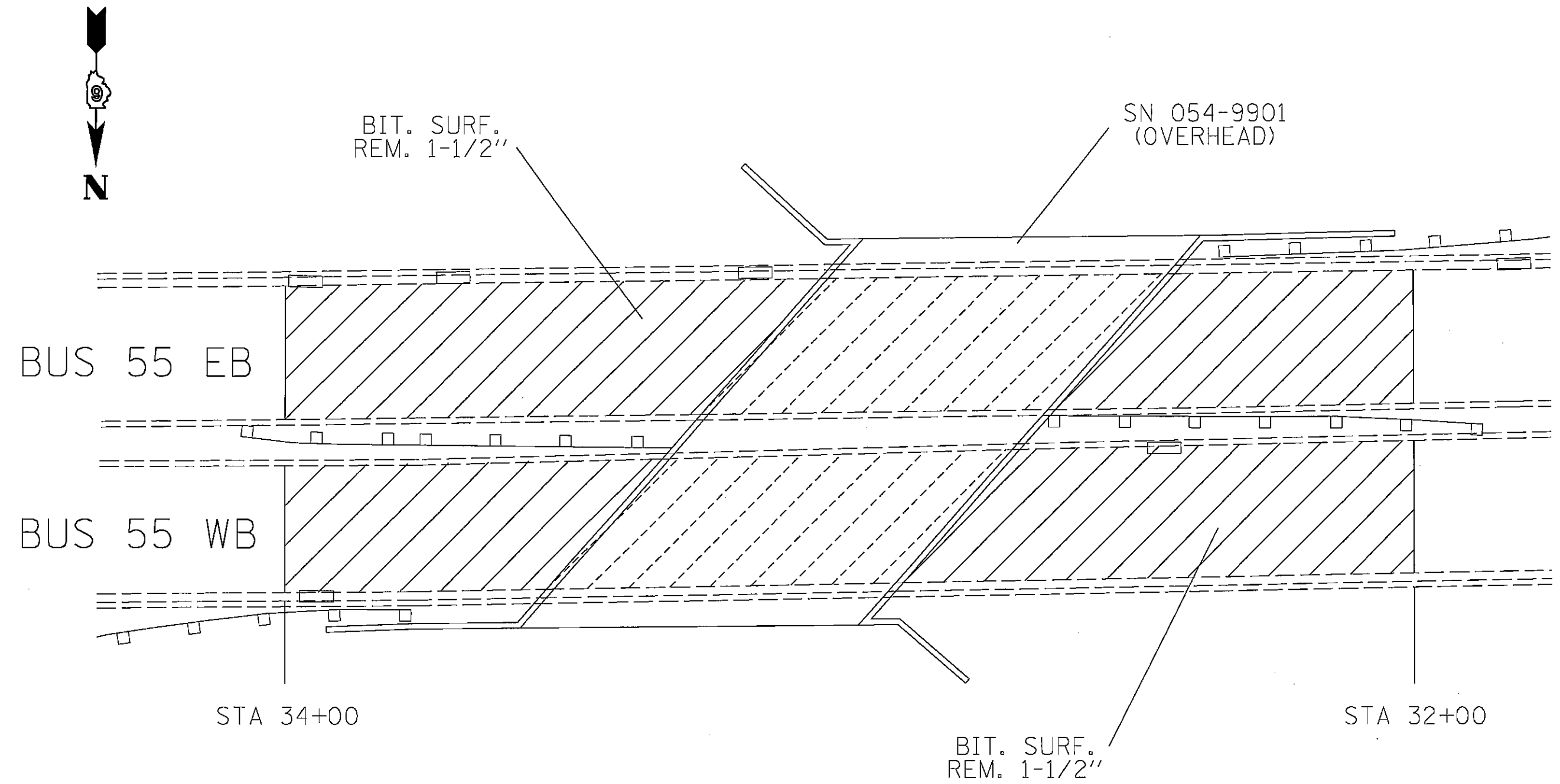
EXISTING
PROPOSED



 REMOVAL

NOTES:
THE CONTRACTOR SHALL MILL DEEP ENOUGH TO ENSURE A MINIMUM OF 1-1/2" BITUMINOUS SURFACE REPLACEMENT AT ALL LOCATIONS. CROSS-SLOPES SHALL MATCH THE EXISTING SLOPES AT EACH BUTT JOINT. IF ANY VARIATION EXISTS, THE CONTRACTOR SHALL PRO-RATE THE CHANGE IN SLOPE SUCH THAT THE DIFFERENCE IS EVENLY DISTRIBUTED THROUGHOUT THE OVERLAY SECTION. THE CONTRACTOR SHALL INCLUDE THE PRICE OF SAW CUTTING IN THE BID PRICE FOR MILLING.

SN 054-0104
EB GRADE
CORRECTION
DETAILS



NOTES:
ALL PROPOSED GRADES SHALL BE THE SAME AS EXISTING GRADES. THE CONTRACTOR SHALL BE RESPONSIBLE FOR TAKING THE NECESSARY MEASURES IN ORDER TO ENSURE THAT THE PROPOSED SURFACE MATCHES THE EXISTING PROFILE. THE CONTRACTOR SHALL MILL DEEP ENOUGH TO ENSURE A MINIMUM OF 1-1/2" BITUMINOUS SURFACE REPLACEMENT AT ALL LOCATIONS. CROSS-SLOPES SHALL MATCH THE EXISTING SLOPES AT EACH BUTT JOINT. IF ANY VARIATION EXISTS, THE CONTRACTOR SHALL PRO-RATE THE CHANGE IN SLOPE SUCH THAT THE DIFFERENCE IS EVENLY DISTRIBUTED THROUGHOUT THE OVERLAY SECTION.

SN 054-9901
PLAN VIEW
(NOT TO SCALE)