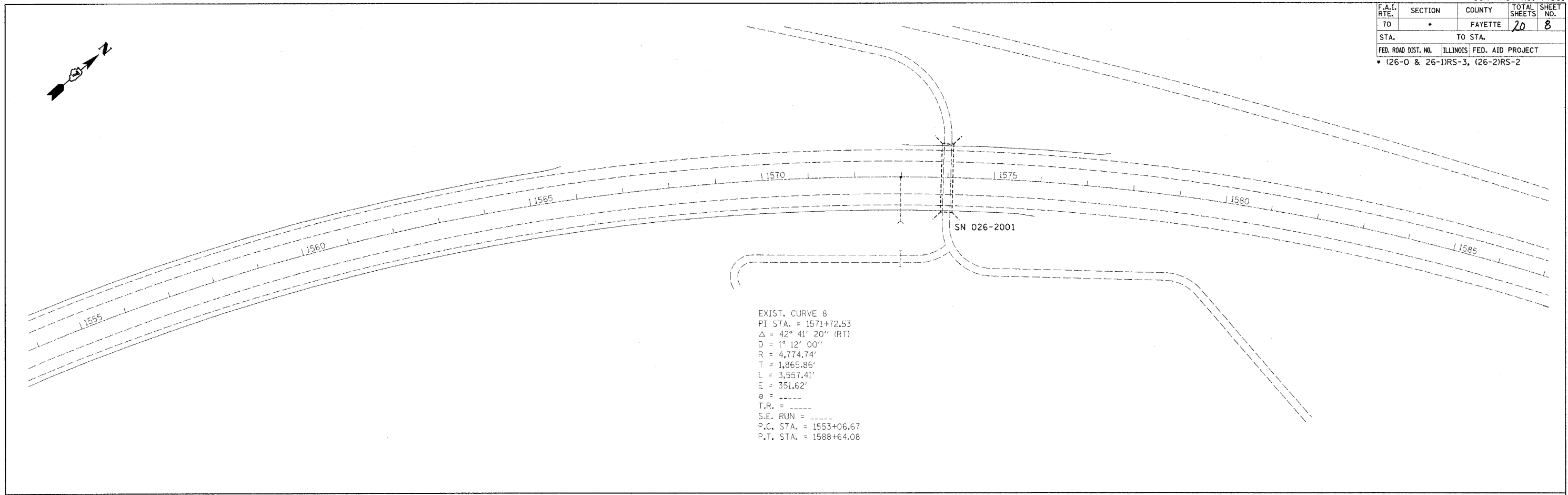
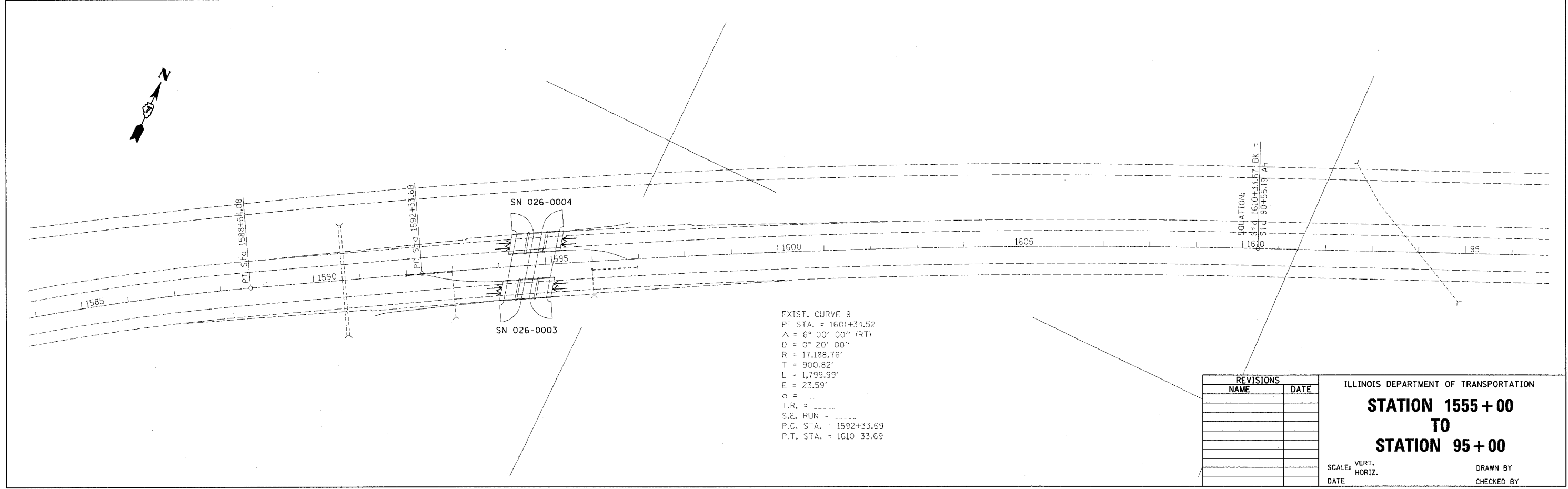


F.A.I. RTE.	SECTION	COUNTY	TOTAL SHEETS	SHEET NO.
70		FAYETTE	20	8
STA.		TO STA.		
FED. ROAD DIST. NO.		ILLINOIS FED. AID PROJECT		
• (26-0 & 26-1)RS-3, (26-2)RS-2				

district
 10/24/2005
 c:\projects\74061\d04104pa.dgn
 PS 2



EXIST. CURVE 8
 PI STA. = 1571+72.53
 $\Delta = 42^\circ 41' 20''$ (RT)
 $D = 1^\circ 12' 00''$
 $R = 4,774.74'$
 $T = 1,865.86'$
 $L = 3,557.41'$
 $E = 351.62'$
 $\theta = \text{-----}$
 $T.R. = \text{-----}$
 $S.E. RUN = \text{-----}$
 $P.C. STA. = 1553+06.67$
 $P.T. STA. = 1588+64.08$



EXIST. CURVE 9
 PI STA. = 1601+34.52
 $\Delta = 6^\circ 00' 00''$ (RT)
 $D = 0^\circ 20' 00''$
 $R = 17,188.76'$
 $T = 900.82'$
 $L = 1,799.99'$
 $E = 23.59'$
 $\theta = \text{-----}$
 $T.R. = \text{-----}$
 $S.E. RUN = \text{-----}$
 $P.C. STA. = 1592+33.69$
 $P.T. STA. = 1610+33.69$

EQUATION:
 $Y = 0.0001x^2 + 0.0001x + 1610+33.67$ BK =
 $0.0001x^2 + 0.0001x + 1610+33.67$ BK =

PLOT DATE = 10/24/2005
 FILE NAME = #FILE#
 PLOT SCALE = #SCALE#
 USER NAME = #USER#

REVISIONS	
NAME	DATE

ILLINOIS DEPARTMENT OF TRANSPORTATION
STATION 1555 + 00
TO
STATION 95 + 00
 SCALE: VERT. _____
 HORIZ. _____
 DATE _____ DRAWN BY _____
 CHECKED BY _____