

F.A. RTE.	SECTION	COUNTY	TOTAL SHEETS	SHEET NO.
*	**	JEFFERSON	6	1

- VARIOUS ROUTES
- D7 SIGNAL MODERNIZATION 2006-4

D-97-019-05



STATE OF ILLINOIS
DEPARTMENT OF TRANSPORTATION
DIVISION OF HIGHWAYS

**PROPOSED
HIGHWAY PLANS**

F.A.P. ROUTE 821 (IL. 15 EB) & 12TH ST.

F.A.P. ROUTE 821 (IL. 15) & 27TH ST.

& PROJECT: HS-0005(485)

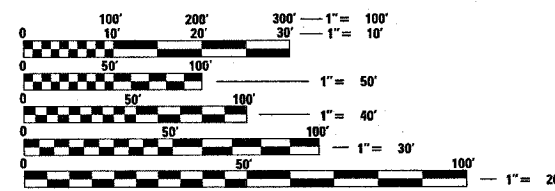
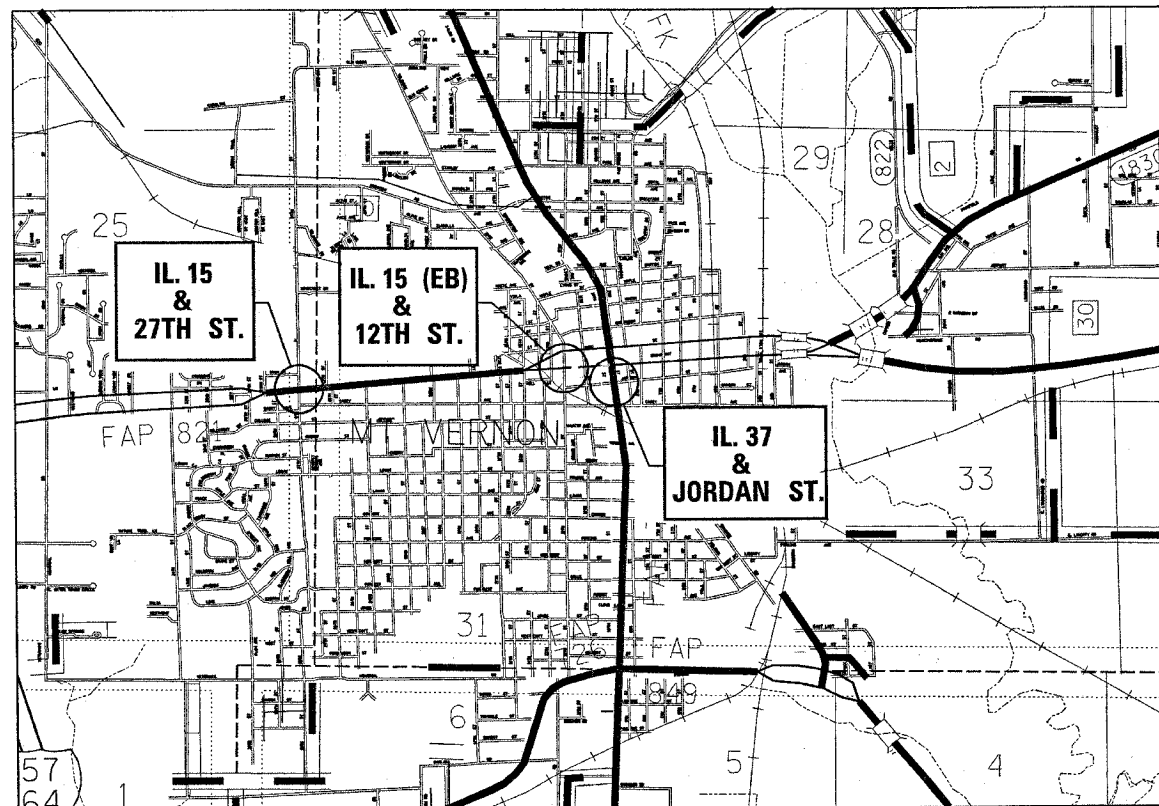
F.A.P. ROUTE 724 (IL. 37) & JORDAN ST.

SECTION D7 SIGNAL MODERNIZATION 2006-4

JEFFERSON COUNTY

C-97-050-05

FOR INDEX OF SHEETS, SEE SHEET NO. 2



FULL SIZE PLANS HAVE BEEN PREPARED USING STANDARD ENGINEERING SCALES. REDUCED SIZED PLANS WILL NOT CONFORM TO STANDARD SCALES. IN MAKING MEASUREMENTS ON REDUCED PLANS, THE ABOVE SCALES MAY BE USED.

J.U.L.I.E.
JOINT UTILITY LOCATION INFORMATION FOR EXCAVATION
1-800-892-0123

CITY OF MT. VERNON
IL. 15 & 27TH ST.
IL. 15 & 12TH ST.
IL. 37 & JORDAN ST.

STATE OF ILLINOIS
DEPARTMENT OF TRANSPORTATION
DIVISION OF HIGHWAYS

SUBMITTED March 8, 2006
Christ H. Reed
DEPUTY DIRECTOR OF HIGHWAYS, REGION ENGINEER

May 12, 2006
Mike Hine
ENGINEER OF DESIGN AND ENVIRONMENT

May 12, 2006
Milton P. Sees, P.E.
DIRECTOR OF HIGHWAYS, CHIEF ENGINEER

**PRINTED BY THE AUTHORITY
OF THE STATE OF ILLINOIS**

PROJECT ENGINEER : ROB MACKLIN
DESIGNER : LYNN MCCLELLAN
TELEPHONE : 217-342-3951 EX 245

CONTRACT NO. 74091