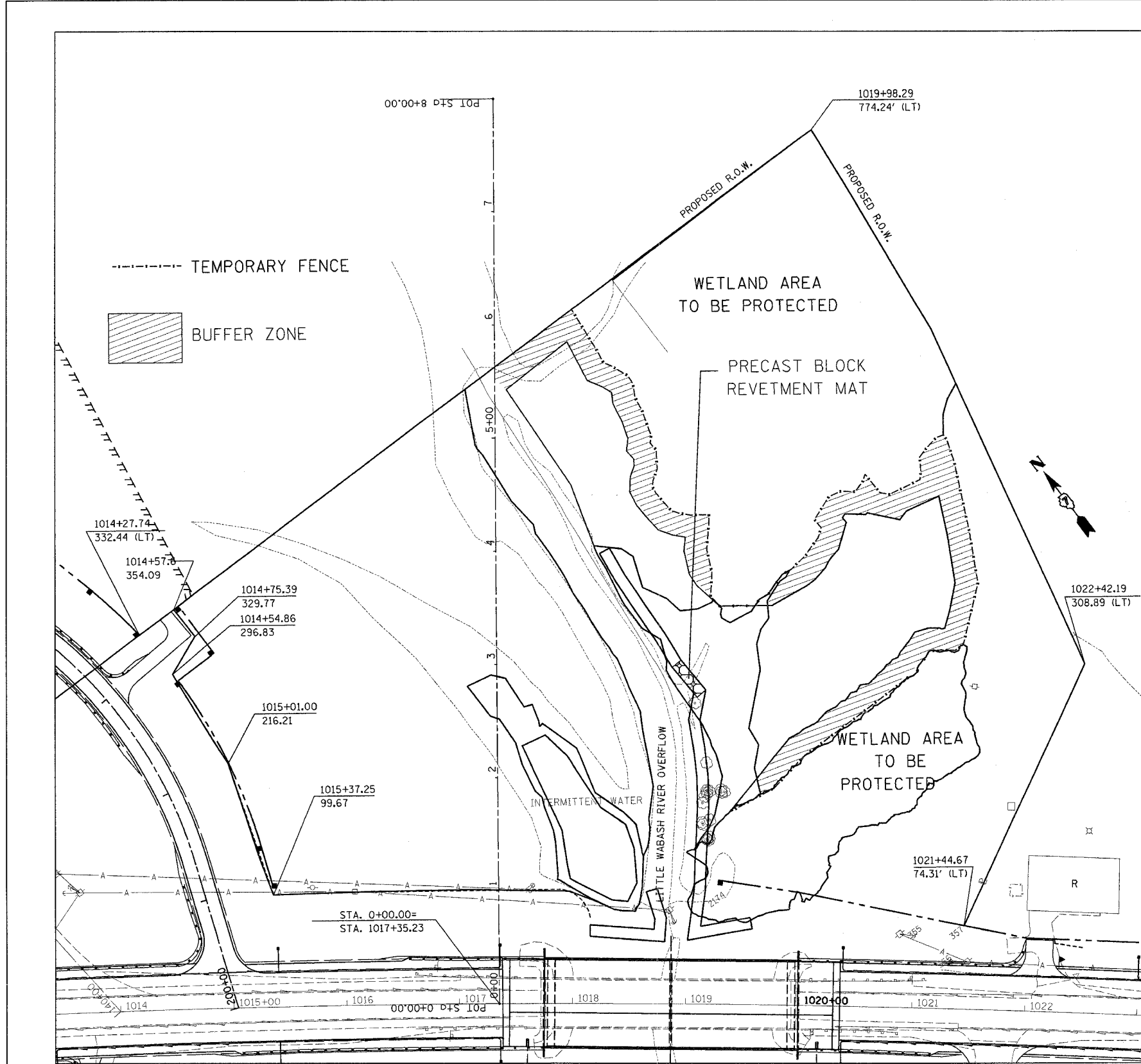


F.A.P. RTE.	SECTION	COUNTY	TOTAL SHEETS	SHEET NO.
774		EFFINGHAM	15	5
STA.		TO STA.		
FED. ROAD DIST. NO.		ILLINOIS FED. AID PROJECT		

D-7 WETLAND MITIGATION - 1



TEMPORARY FENCE

STATION	OFFSET
1+68.5	205.4
1+86.8	240.0
2+98.1	373.7
3+09.5	382.9
3+10.0	406.0
3+14.6	413.3
3+69.3	426.6
4+76.2	406.4
5+00.5	396.6
4+80.8	375.5
4+60.9	375.6
4+48.8	345.3
4+66.1	326.6
4+51.3	304.5
4+25.9	282.6
4+18.3	287.4
3+82.9	261.2
3+78.1	253.0
3+61.1	241.0
3+56.5	232.9
3+50.7	228.7
3+50.6	198.6
3+59.0	190.8
3+80.7	191.1
4+00.7	186.5
4+31.2	188.8
4+34.7	156.3
4+58.0	139.3
4+52.9	140.9
4+72.5	143.3
4+88.7	142.7
5+03.0	137.5
5+36.3	124.0
5+53.6	118.6
5+65.4	94.6
6+13.4	68.2

EARTH BERM OFFSETS

STATION	OFFSET	
	LEFT	RIGHT
0+55.0	141.9	171.8
0+75.0	143.4	174.7
1+00.0	135.9	178.2
1+25.0	0	179.1
1+50.0	0	180.7
1+75.0	0	181.8
2+00.0	0	181.3
2+25.0	0	178.5
2+50.0	0	174.4
2+75.0	0	179.4
3+00.0	0	158.9
3+25.0	0	144
3+50.0	0	127.1
3+75.0	0	110.3
4+00.0	0	96.1

PRECAST BLOCK REVETMENT MAT
STATION 2+85 33 SQ YD

REVISIONS	
NAME	DATE

ILLINOIS DEPARTMENT OF TRANSPORTATION

GENERAL PLAN

SCALE: VERT. HORIZ. DATE

DRAWN BY CHECKED BY

PLOT DATE = 4/12/2006
 FILE NAME = #FILEL9
 USER NAME = dbrist