

district
4/27/2006
c:\projects\74190\d\06306pa.dgn

CONTRACT NO. 74190

F.A.P. RTE.	SECTION	COUNTY	TOTAL SHEETS	SHEET NO.
827	*	WABASH	4	1

* D-7 DEMOLITION 2006-1

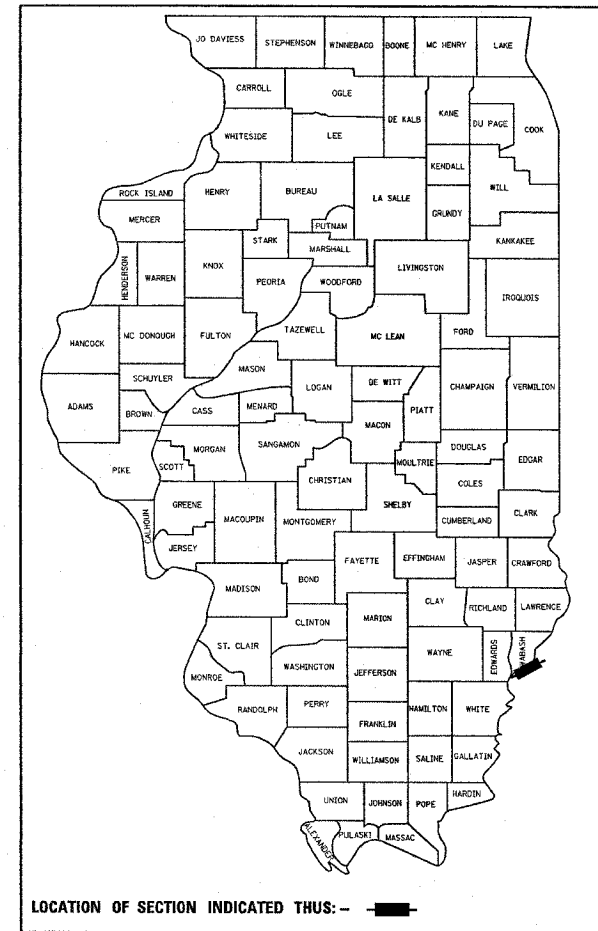
STATE OF ILLINOIS
DEPARTMENT OF TRANSPORTATION
DIVISION OF HIGHWAYS

**PROPOSED
HIGHWAY PLANS**

FAP ROUTE 827 (ILL 15)
SECTION D-7 DEMOLITION 2006-1
~~PROJECT~~
WABASH COUNTY
BUILDING DEMOLITION

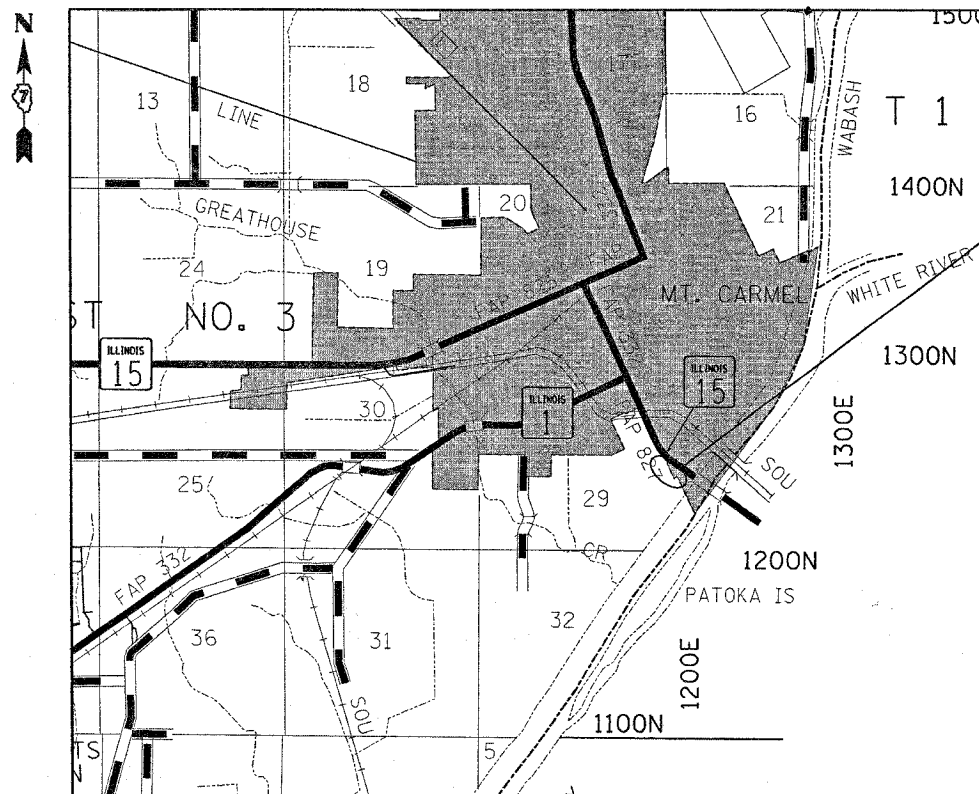
FOR INDEX OF SHEETS, SEE SHEET NO. 2

D-97-063-06



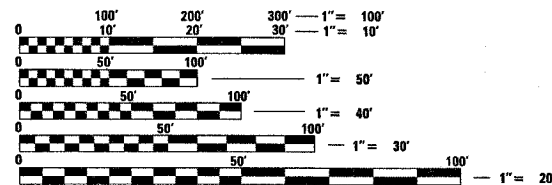
LOCATION OF SECTION INDICATED THUS: — ■ —

C-97-109-06



PROJECT LOCATION

ADT (2005) = 7,200



FULL SIZE PLANS HAVE BEEN PREPARED USING STANDARD ENGINEERING SCALES. REDUCED SIZED PLANS WILL NOT CONFORM TO STANDARD SCALES. IN MAKING MEASUREMENTS ON REDUCED PLANS, THE ABOVE SCALES MAY BE USED.

J.U.L.I.E.
JOINT UTILITY LOCATION INFORMATION FOR EXCAVATION
1-800-892-0123

PROJECT ENGINEER : MARK DAUGHERTY
SQUAD LEADER : KRISTI SANDSCHAFFER
DESIGNER : KRISTI SANDSCHAFFER
TELEPHONE : 217/342-3951 EX 313

STATE OF ILLINOIS
DEPARTMENT OF TRANSPORTATION
DIVISION OF HIGHWAYS

SUBMITTED April 28, 2006
Christ H. Reed
DEPUTY DIRECTOR OF HIGHWAYS, REGION ENGINEER

May 12, 2006
Mike Hine
ENGINEER OF DESIGN AND ENVIRONMENT

May 12, 2006
Milton R. Sees, P.E.
DIRECTOR OF HIGHWAYS, CHIEF ENGINEER

**PRINTED BY THE AUTHORITY
OF THE STATE OF ILLINOIS**

CONTRACT NO. 74190

TOWNSHIP: MT. CARMEL

GROSS LENGTH = FEET = MILES
NET LENGTH = FEET = MILES

CONTRACT NO. 74190

F.A.P. RTE.	SECTION	COUNTY	TOTAL SHEETS	SHEET NO.
827	•	WABASH	4	2

STA.	TO STA.
FED. ROAD DIST. NO.	ILLINOIS FED. AID PROJECT

• D-7 DEMOLITION 2006-1

GENERAL NOTES

THIS PROJECT IS LOCATED ON THE SOUTH SIDE OF ILLINOIS ROUTE 15 IN WABASH COUNTY, AT THE WABASH RIVER IN MT. CARMEL. THE WORK INCLUDED IN THIS SECTION CONSISTS OF BUILDING DEMOLITION, FILLING WELLS AND CISTERNS, FILLING SEPTIC TANKS AND OTHER WORK NECESSARY TO COMPLETE THIS SECTION.

ALL PARCELS ARE EXPECTED TO HAVE WELLS AND SEPTIC TANKS BASED ON EXISTING UTILITY INFORMATION. DUE TO LACK OF EXACT LOCATIONS OF SOME WELLS AND ALL SEPTIC TANKS, ONLY THE KNOWN LOCATIONS OF EXISTING WELLS ARE SHOWN ON THE PLANS.

INDEX OF SHEETS

SHEET NO	TITLE
1	COVER SHEET
2	GENERAL NOTES AND INDEX OF SHEETS
3	SUMMARY OF QUANTITIES
4	PLAN SHEET

PLOT DATE = 4/27/2006
 FILE NAME = #FILE#
 PLOT SCALE = #SCALE#
 USER NAME = district

REVISIONS	
NAME	DATE

ILLINOIS DEPARTMENT OF TRANSPORTATION

**GENERAL NOTES
AND
INDEX OF SHEETS**

SCALE: VERT.
HORIZ.
DATE

DRAWN BY
CHECKED BY

district
4/27/2006
c:\projects\74190d\06306pa.dgn

CONTRACT NO. 74190				
F.A.P. RTE.	SECTION	COUNTY	TOTAL SHEETS	SHEET NO.
827	•	WABASH	4	3
STA.		TO STA.		
FED. ROAD DIST. NO.		ILLINOIS FED. AID PROJECT		
• D-7 DEMOLITION 2006-1				

SUMMARY OF QUANTITIES			TOTAL QUANTITIES	CONSTRUCTION TYPE CODE	
CODE NO	ITEM	UNIT		Y004 URBAN 100% STATE	
67100100	MOBILIZATION	L SUM	1	1	
Z0007601	BUILDING REMOVAL NO. 1	L SUM	1	1	
Z0007602	BUILDING REMOVAL NO. 2	L SUM	1	1	
Z0007603	BUILDING REMOVAL NO. 3	L SUM	1	1	
Z0007604	BUILDING REMOVAL NO. 4	L SUM	1	1	
Z0007605	BUILDING REMOVAL NO. 5	L SUM	1	1	
Z0007606	BUILDING REMOVAL NO. 6	L SUM	1	1	
Z0007607	BUILDING REMOVAL NO. 7	L SUM	1	1	
Z0007608	BUILDING REMOVAL NO. 8	L SUM	1	1	
Z0007609	BUILDING REMOVAL NO. 9	L SUM	1	1	
Z0007610	BUILDING REMOVAL NO. 10	L SUM	1	1	
Z0007611	BUILDING REMOVAL NO. 11	L SUM	1	1	
Z0007612	BUILDING REMOVAL NO. 12	L SUM	1	1	
Z0007613	BUILDING REMOVAL NO. 13	L SUM	1	1	
Z0007614	BUILDING REMOVAL NO. 14	L SUM	1	1	
Z0007615	BUILDING REMOVAL NO. 15	L SUM	1	1	
Z0007616	BUILDING REMOVAL NO. 16	L SUM	1	1	
Z0007617	BUILDING REMOVAL NO. 17	L SUM	1	1	
Z0007618	BUILDING REMOVAL NO. 18	L SUM	1	1	
Z0007619	BUILDING REMOVAL NO. 19	L SUM	1	1	
Z0007620	BUILDING REMOVAL NO. 20	L SUM	1	1	
Z0007621	BUILDING REMOVAL NO. 21	L SUM	1	1	
Z0023800	FILLING EXISTING SEPTIC TANK	EACH	11	11	
Z0023900	FILLING EXISTING WELLS	EACH	15	15	
Z0049902	REMOVAL AND DISPOSAL OF NON-FRIABLE ASBESTOS, BUILDING NO. 2	L SUM	1	1	
Z0049904	REMOVAL AND DISPOSAL OF NON-FRIABLE ASBESTOS, BUILDING NO. 4	L SUM	1	1	
Z0049909	REMOVAL AND DISPOSAL OF NON-FRIABLE ASBESTOS, BUILDING NO. 9	L SUM	1	1	
Z0049911	REMOVAL AND DISPOSAL OF NON-FRIABLE ASBESTOS, BUILDING NO. 11	L SUM	1	1	
Z0049918	REMOVAL AND DISPOSAL OF NON-FRIABLE ASBESTOS, BUILDING NO. 18	L SUM	1	1	
Z0049919	REMOVAL AND DISPOSAL OF NON-FRIABLE ASBESTOS, BUILDING NO. 19	L SUM	1	1	
Z0049920	REMOVAL AND DISPOSAL OF NON-FRIABLE ASBESTOS, BUILDING NO. 20	L SUM	1	1	

*SPECIALTY ITEMS

REVISIONS	
NAME	DATE

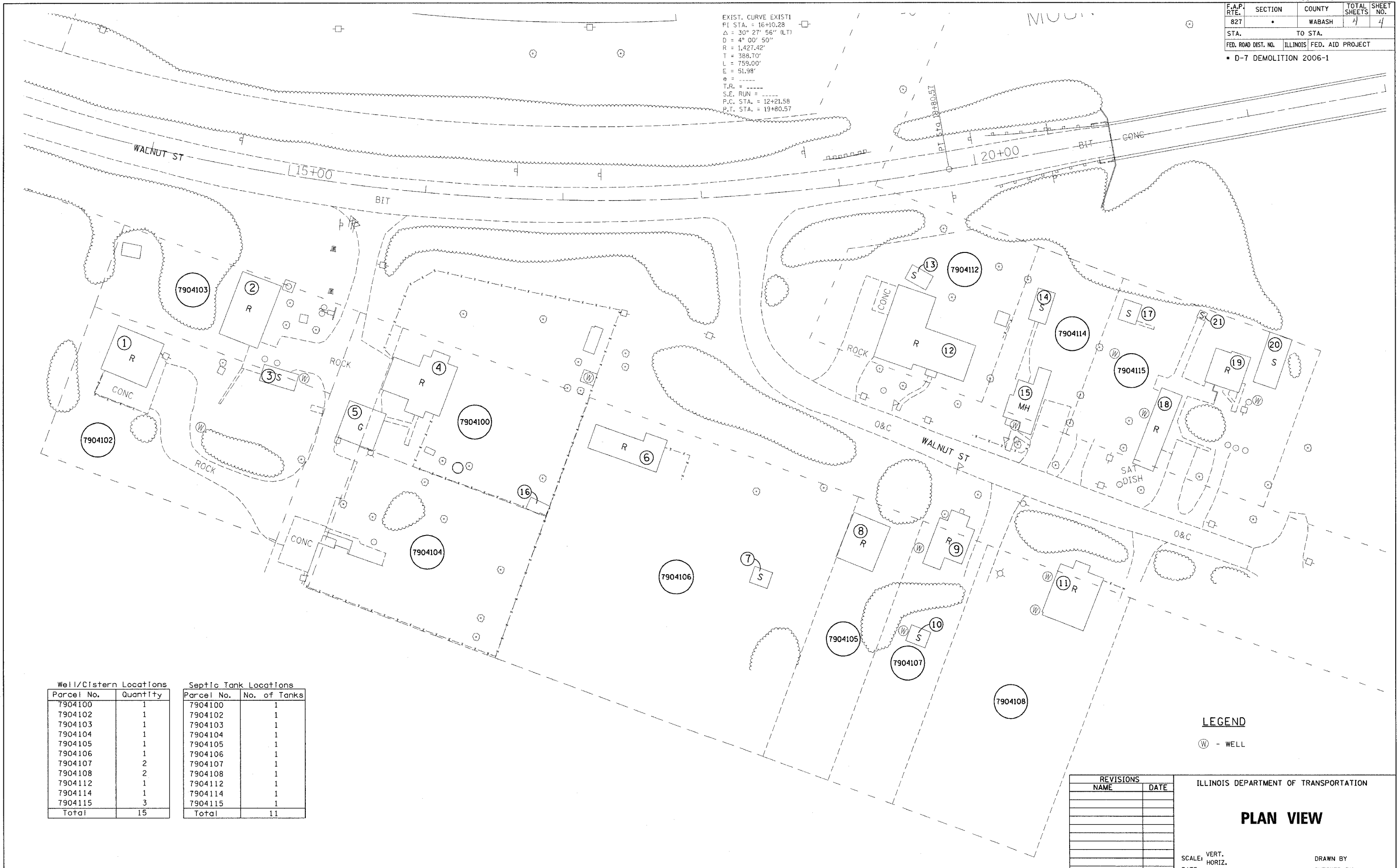
ILLINOIS DEPARTMENT OF TRANSPORTATION
SUMMARY OF QUANTITIES
SCALE: VERT. DRAWN BY
 HORIZ. CHECKED BY
 DATE

PLOT DATE = 4/27/2006
FILE NAME = #EILEL9
SCALE = 1/8"=1'-0"
USER NAME = d06306

F.A.P. RTE.	SECTION	COUNTY	TOTAL SHEETS	SHEET NO.
827		WABASH	4	4
STA.		TO STA.		
FED. ROAD DIST. NO.		ILLINOIS FED. AID PROJECT		

• D-7 DEMOLITION 2006-1

EXIST. CURVE EXISTI
 P.I. STA. = 16+10.28
 $\Delta = 30^\circ 27' 56''$ (L.T.)
 $D = 41^\circ 00' 50''$
 $R = 1,427.42'$
 $T = 388.70'$
 $L = 759.00'$
 $E = 51.98'$
 $\phi =$
 T.R. =
 S.E. RUN =
 P.C. STA. = 12+21.58
 P.T. STA. = 19+80.57



Well/Cistern Locations

Parcel No.	Quantity
7904100	1
7904102	1
7904103	1
7904104	1
7904105	1
7904106	1
7904107	2
7904108	2
7904112	1
7904114	1
7904115	3
Total	15

Septic Tank Locations

Parcel No.	No. of Tanks
7904100	1
7904102	1
7904103	1
7904104	1
7904105	1
7904106	1
7904107	1
7904108	1
7904112	1
7904114	1
7904115	1
Total	11

LEGEND

⊕ - WELL

REVISIONS	
NAME	DATE

ILLINOIS DEPARTMENT OF TRANSPORTATION

PLAN VIEW

SCALE: VERT. HORIZ. DATE

DRAWN BY CHECKED BY

PLOT DATE = 4/27/2006
 PLOT SCALE = 1"=40'
 USER NAME = dbrist