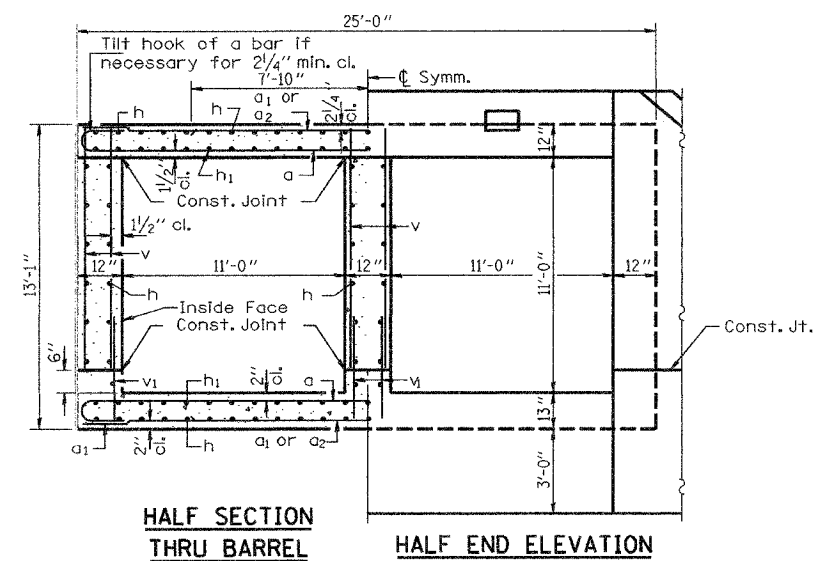
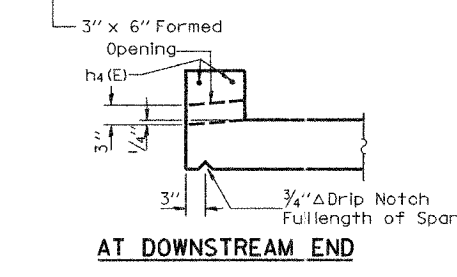
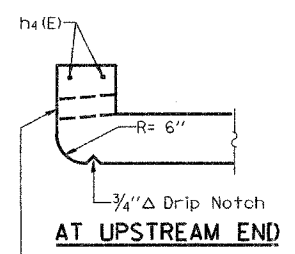


REINFORCEMENT BACK FACE

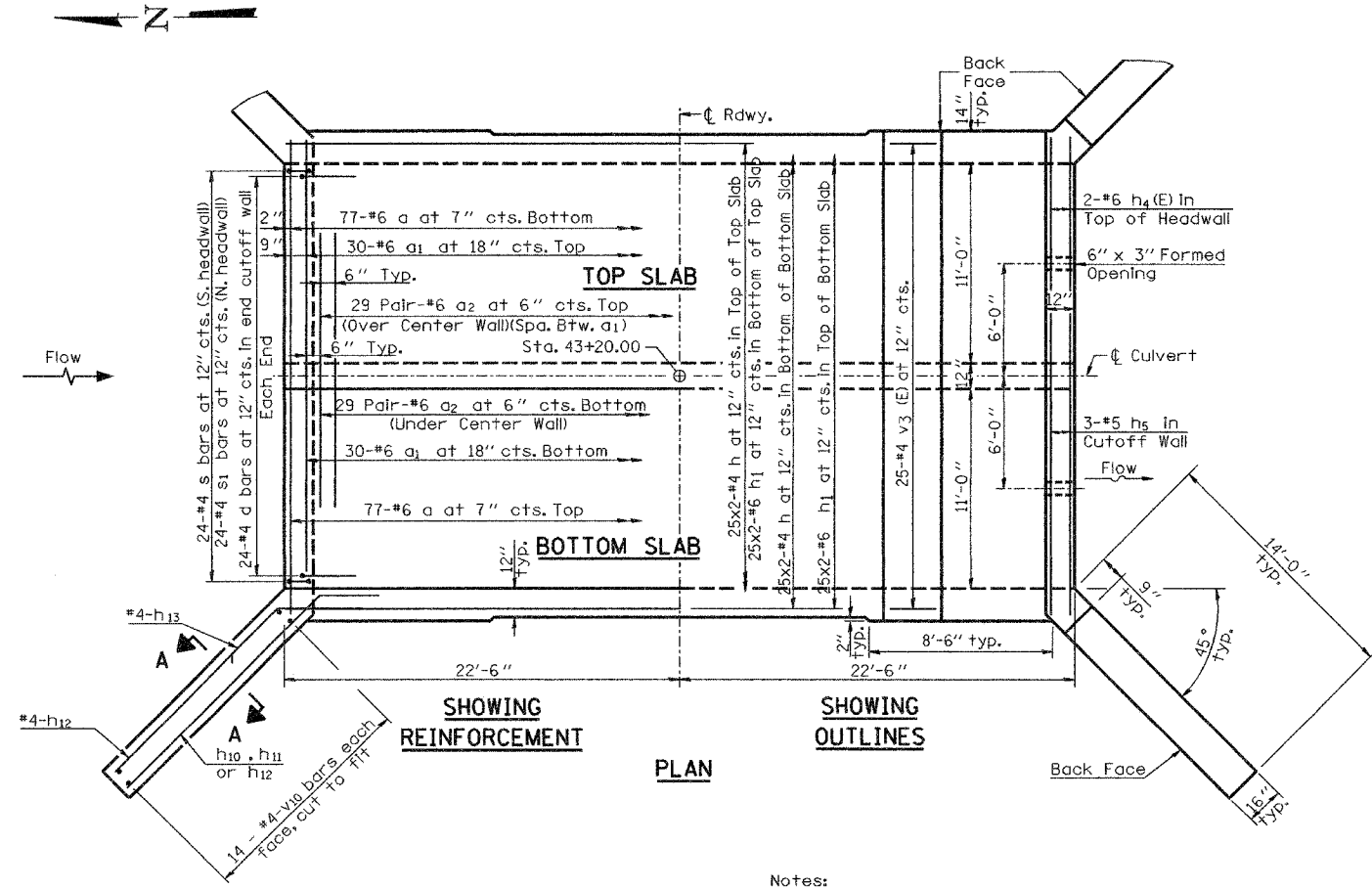
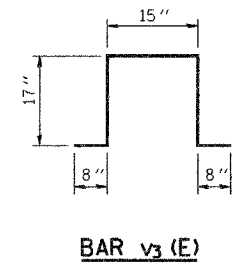
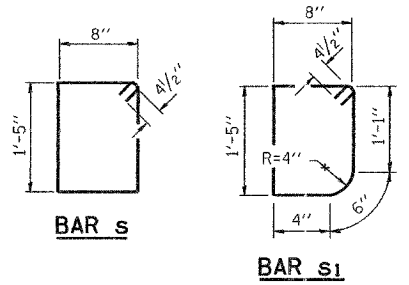
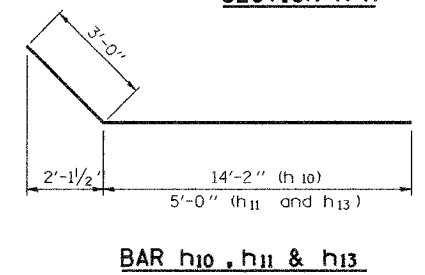
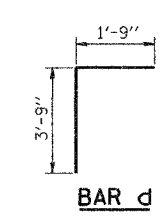
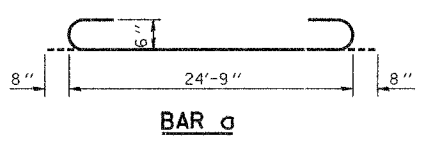


CONCRETE BOX CULVERT BILL OF MATERIAL

Bar	No.	Size	Length	Shape
a	154	#6	26'-1"	U
a1	60	#6	24'-9"	U
a2	116	#6	15'-8"	U
d	48	#5	5'-6"	J
h	364	#4	23'-6"	—
h1	100	#6	24'-0"	—
h4(E)	4	#6	24'-9"	—
h5	6	#5	24'-9"	—
h6(E)	4	#5	24'-8"	—
h10	72	#8	17'-2"	—
h11	24	#8	8'-0"	—
h12	92	#4	13'-8"	—
h13	36	#4	8'-0"	—
s	24	#4	4'-11"	D
s1	24	#4	4'-9"	D
v	362	#5	11'-3"	—
v1	226	#5	3'-6"	—
v3(E)	50	#4	5'-5"	J
v10	112	#4	16'-5"	—
v11	2	#4	3'-6"	—
Concrete Box Culverts	Cu. Yd.		1185.7	
Reinforcement Bars, Epoxy Coated	Pound		430	
Reinforcement Bars	Pound		31980	



DRAIN DETAIL



Notes:
 Reinforcement bars designated (E) shall be epoxy coated.
 Bars indicated thus 12x4-#5 etc. indicates 12 lines of bars with 4 lengths per line.
 E.F. = Each Face
 I.F. = Inside Face
 The Northeast wingwall and the 16" water main intersect. See detail on sheet 8.

Drawing not to Scale

REVISIONS	
NAME	DATE

ILLINOIS DEPARTMENT OF TRANSPORTATION
CULVERT
CULVERT DETAILS
 STRUCTURE NO. 060-2045
 TR 336A
 SECTION 31BR
 MADISON COUNTY

DESIGNED *Tom L. Kurtzbach*
 CHECKED *Pat D. Claussen*
 DRAWN *JTC*
 CHECKED *TLG / PDC*

EXAMINED *Thomas J. Domagalicki*
 PASSED *Ralph E. Anderson*

DATE
 CHECKED BY