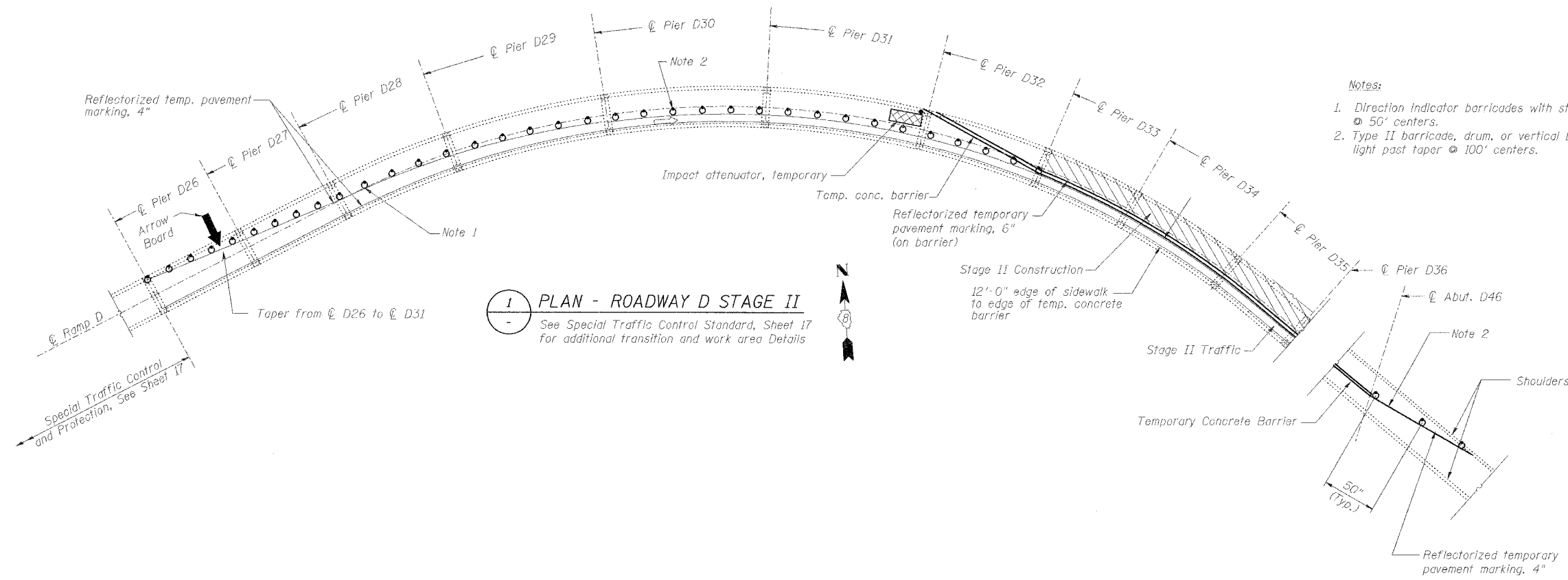


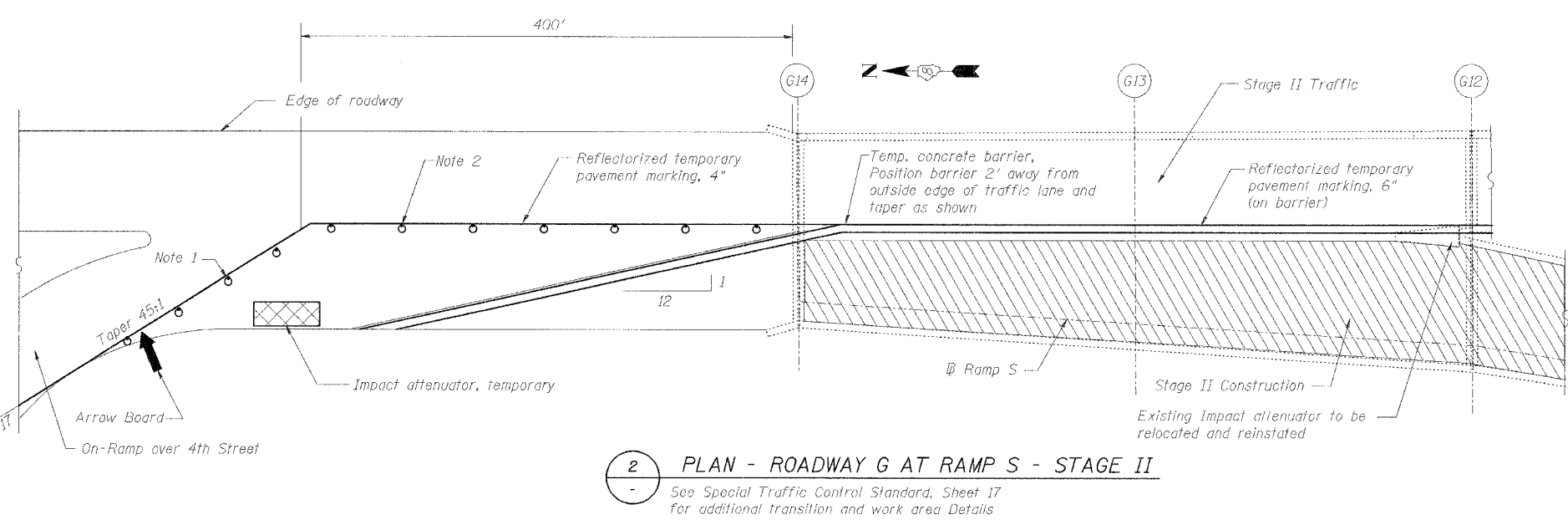
ROUTE NO.	SECTION	COUNTY	TOTAL SHEETS	SHEET NO.
F.A.I. 70	*	ST. CLAIR	111	15
FED. ROAD DIST. NO. 7	ILLINOIS	FED. AID PROJECT: 31-70		

* 82-3HVB-3R-3
CONTRACT NO. 76305



- Notes:
1. Direction indicator barricades with steady burn monodirectional light on taper @ 50' centers.
 2. Type II barricade, drum, or vertical barrier with steady burn monodirectional light past taper @ 100' centers.

1 PLAN - ROADWAY D STAGE II
See Special Traffic Control Standard, Sheet 17 for additional transition and work area Details



2 PLAN - ROADWAY G AT RAMP S - STAGE II
See Special Traffic Control Standard, Sheet 17 for additional transition and work area Details

REVISIONS	
NAME	DATE

STAGE II PLAN
STATE OF ILLINOIS
DEPARTMENT OF TRANSPORTATION
REHABILITATION AND RETROFIT REPAIRS
FAI ROUTE 70
POPLAR STREET BRIDGE APPROACHES
ST. CLAIR COUNTY

STRUCTURE NO.
SCALE: N.T.S.
DATE: 02/28/2006

DATE: 4/18/2006
FILENAME: p:\2001\2001-1300\2001.1240\drafting\roadwayrehab_ds\trafcont\ds_plans_02.dgn

DESIGNED	JDOT
CHECKED	JEL
DRAWN	IMG
CHECKED	JEL