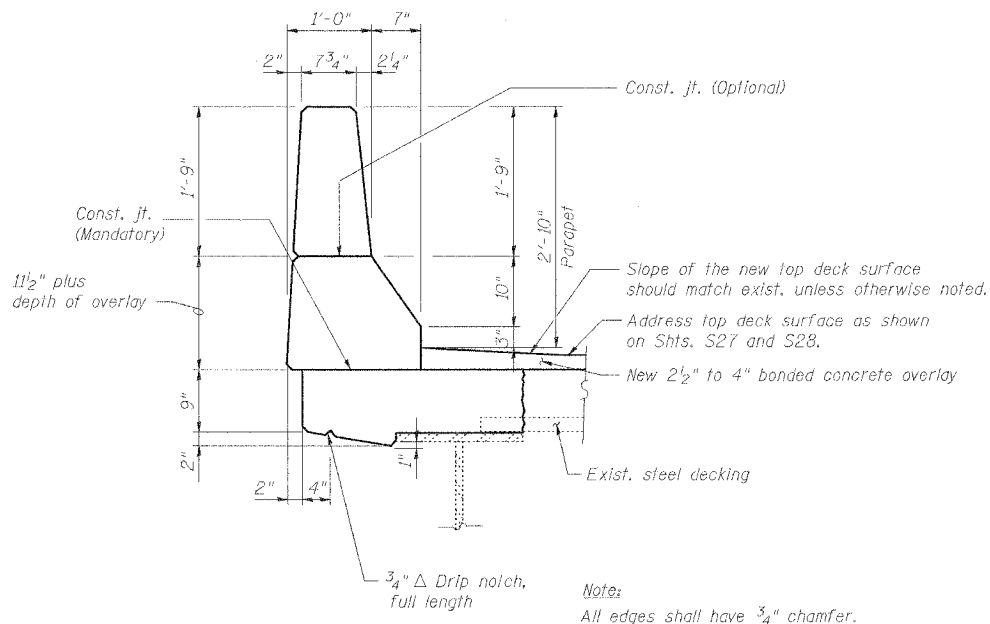
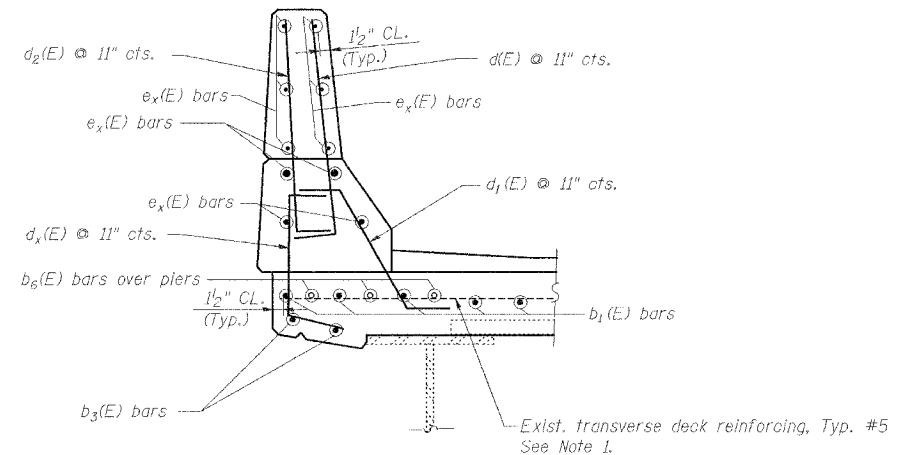


1 PARAPET DEMOLITION PLAN
S24

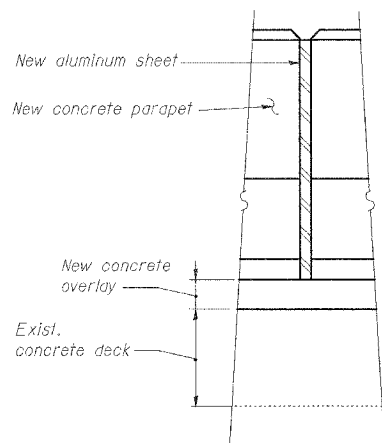


2 TYPICAL NEW PARAPET CROSS SECTION
S24

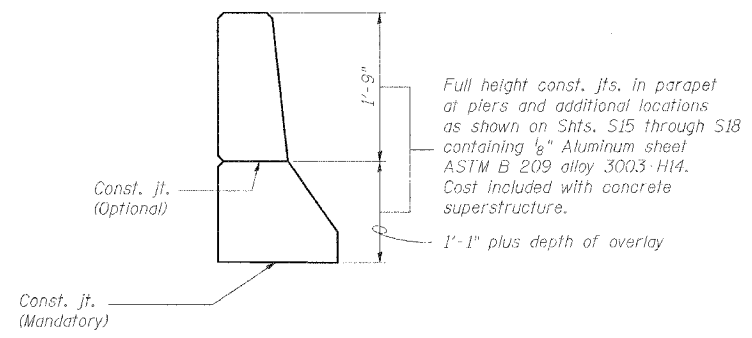


3 TYPICAL REINFORCEMENT FOR NEW PARAPET
S24

Note 1: Existing transverse reinforcement was terminated at locations of existing floor drains and does not extend across the full width of the deck at these locations. Contractor shall provide #5 $a_{351}(E)$ bars connected to existing transverse bars via mechanical splice at these locations. See deck plan sheet for quantities.



4 PARAPET CONSTRUCTION JOINT
S24



5 PARAPET JOINT DETAILS
S24

Notes:
 $e_x(E)$ bars shall not pass thru aluminum sheets.

DATE: 4/9/2006 FILENAME: P:\2001\1201-1300\2001.1240\drafting\roadwayrehab_dsl\rampd\para\1\para01.dgn

DESIGNED	JPD
CHECKED	CSD
DRAWN	CLK
CHECKED	JPD

REVISIONS	
NAME	DATE

TYPICAL PARAPET DETAILS

STATE OF ILLINOIS
DEPARTMENT OF TRANSPORTATION
REHABILITATION AND RETROFIT REPAIRS
FAI ROUTE TO
POPLAR STREET BRIDGE APPROACHES
ST. CLAIR COUNTY

STRUCTURE NO. 082-0142 (RAMP S)
SCALE:
DATE: 02/28/2006