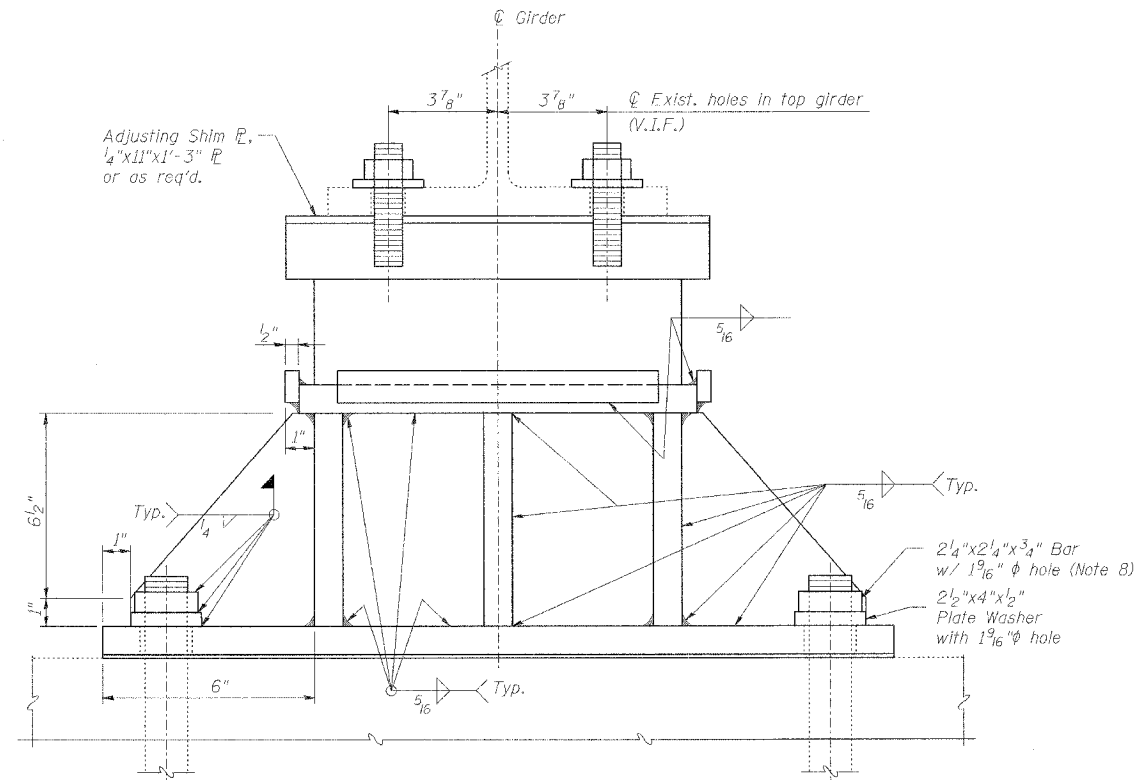
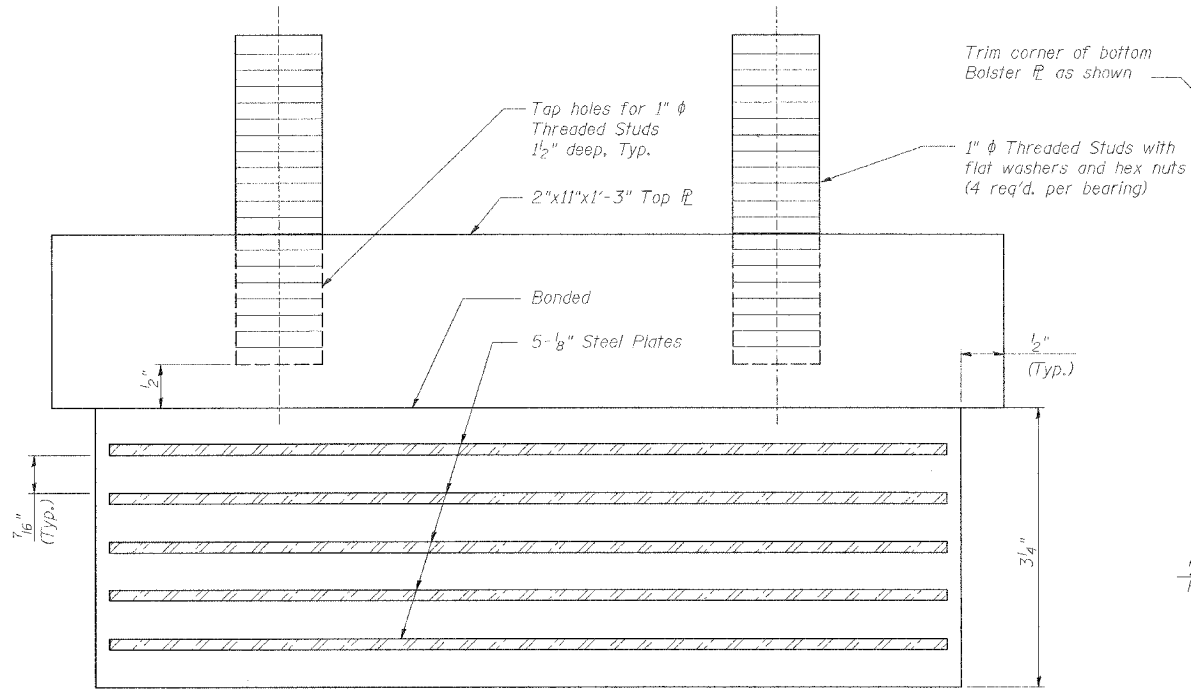


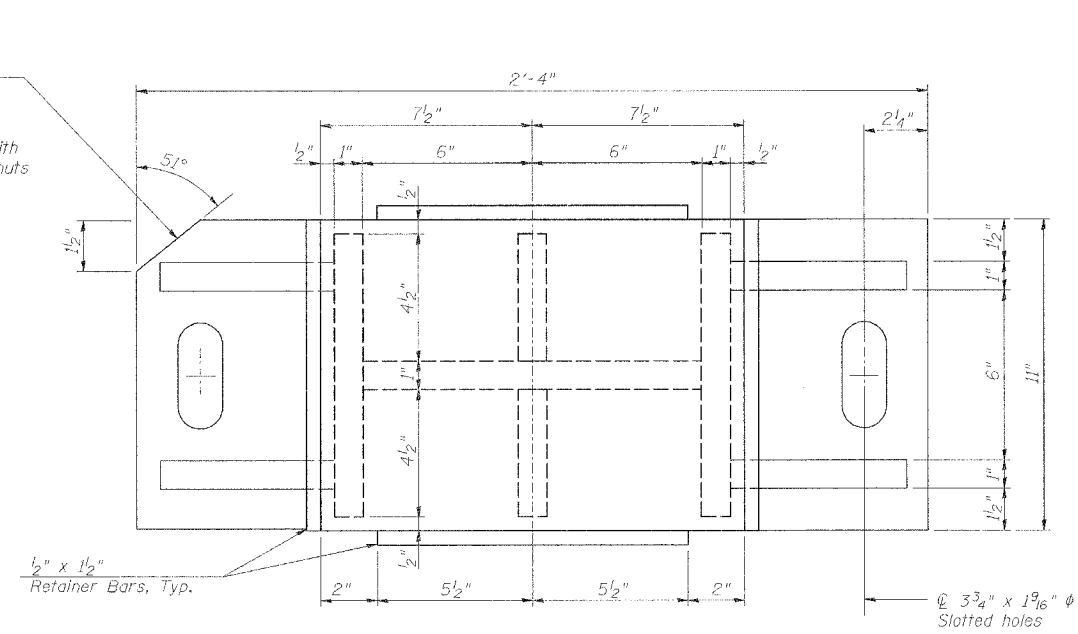
1 BEARING ELEVATION
S39



2 BEARING ELEVATION
S39



3 ELASTOMERIC BEARING DETAIL
S39 (Type 1)



4 BOLSTER PLAN
S39

- Notes:**
- Bearings to be replaced are 5 exist. Rocker Bearings at D46.
 - Exist. anchor bolts to be reused. Regrout in place where necessary.
 - Air temperature at time of setting the Elastomeric Bearing shall not be lower than 35° or higher than 65°F.
 - Area between Retainer Bars and Elastomeric Bearing to be filled with sealer 1" thick, sloped to drain. (Elastomeric Polymer Type Sealer)
 - The cost of the 2" Top Plate is included in the unit bid for "Elastomeric Bearing, Type I".
 - Shoring shall be included with bearing replacement.
 - Exist. anchor bolts shall be cut off 1/2" above the 3/4" bar.
 - May use standard nut if full engagement of threads is achieved.

BEARING DETAILS

STATE OF ILLINOIS
DEPARTMENT OF TRANSPORTATION
REHABILITATION AND RETROFIT REPAIRS
FAI ROUTE 70
POPLAR STREET BRIDGE APPROACHES
ST. CLAIR COUNTY

STRUCTURE NO. 082-0144 (ROADWAY D)
SCALE: N.T.S.
DATE: 02/28/2006

REVISIONS	
NAME	DATE

DATE: 4/19/2006 FILENAME: P:\2001\1201-1300\2001.1240\drafting\roadwayrehab_ds\rampd\bearings\d-bear02.dgn

DESIGNED	APJ
CHECKED	JEL
DRAWN	CLK
CHECKED	APJ