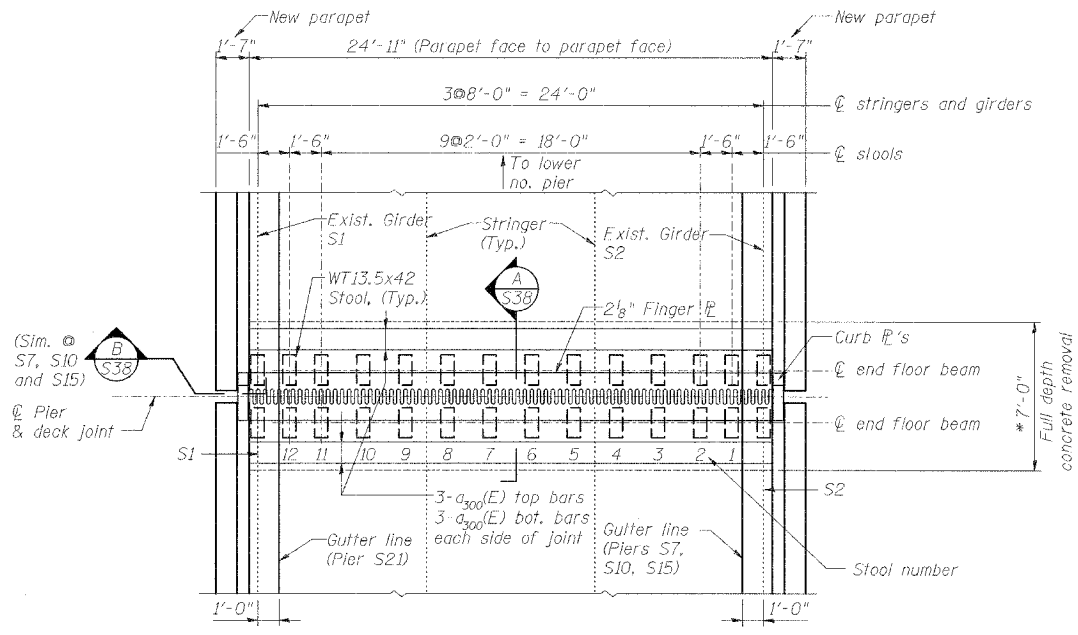


ROUTE NO.	SECTION	COUNTY	TOTAL SHEETS	SHEET NO.
F.A.I. 70	*	ST. CLAIR	111	105
FED. ROAD DIST. NO. 7	ILLINOIS	FED. AID PROJECT- 1M-70		

* 82-3HVB-3R-3 SHEET S-38 OF S-44
CONTRACT NO. 76305

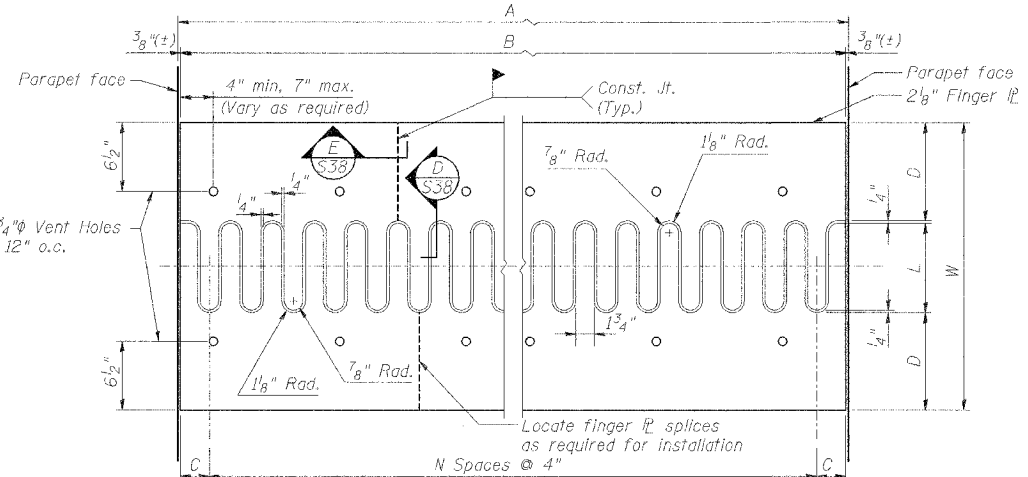
Pier	A (Roadway Width)	B (Finger Pl. Length)	C	L (Finger Length)	N (Finger Pl. Width)	W (Finger Pl. Width)	D
S7,S10	24'-11"	24'-10 1/4"	3 1/8"	7 1/4"	73	2'-4 1/4"	10 3/8"
S15	24'-11"	24'-10 1/4"	3 1/8"	7 3/4"	73	2'-5 3/4"	10 7/8"
S21	24'-11"	24'-10 1/4"	3 1/8"	6 3/4"	73	2'-3 1/4"	10 1/8"



PLAN
FINGER JT. @ PIERS S7, S10, S15, S21
8.0% Cross slope towards girder S2 at piers S7, S10, S15
8.0% Cross slope towards girder S1 at pier S21

Location	d			e	f		
	-30°F	50°F	130°F		-30°F	50°F	130°F
S7, S10	13 3/4"	11 1/4"	8 3/4"	10"	7 1/2"	5"	2 1/2"
S15	14 3/4"	12"	9 1/4"	10 1/2"	7 3/4"	5"	2 1/4"
S21	12 3/4"	10 1/2"	8 1/4"	9 3/4"	7 1/4"	5"	2 3/4"

Notes:
All steel for finger plate joints shall be M270, Grade 50.
Slope trough 1"/ft towards pier on lower side of deck.
End details at pier per Sheet S-41.
Adjust height of stool as required by shimming.
Shims to be 1/8", 1/4", 3/8", 1/2", or 5/8" as required.
Standard shim pack to include 1/2", 1/4", 3/8" and (2) 1/8" shims



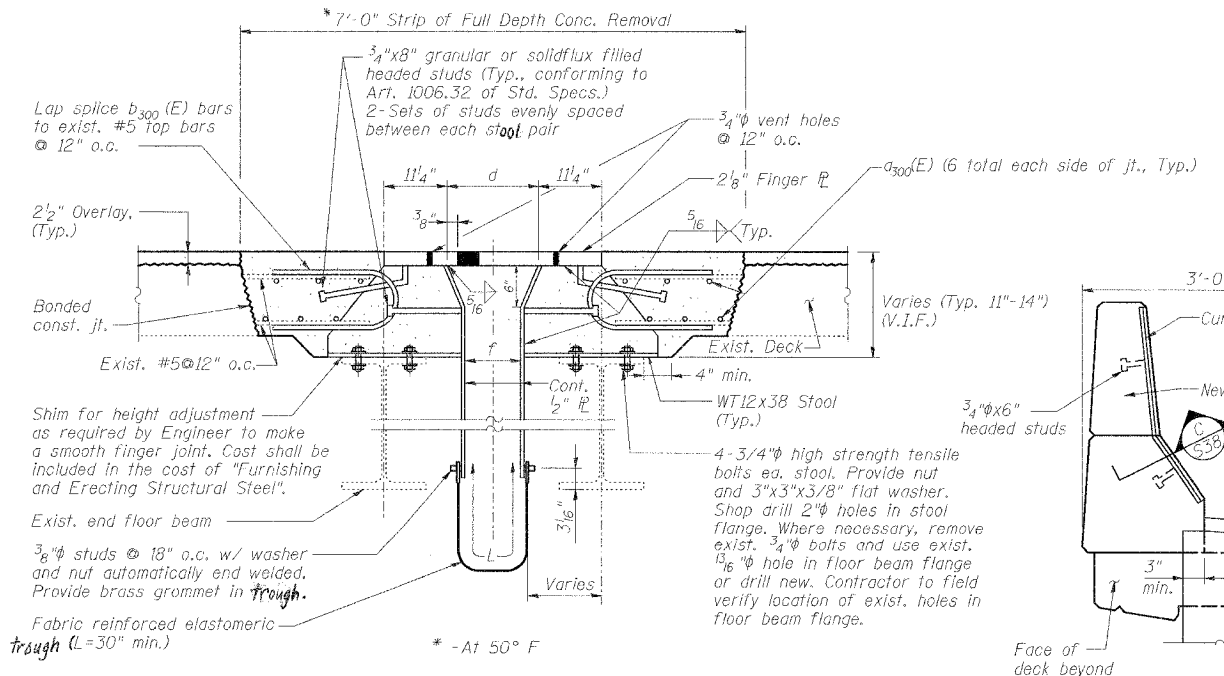
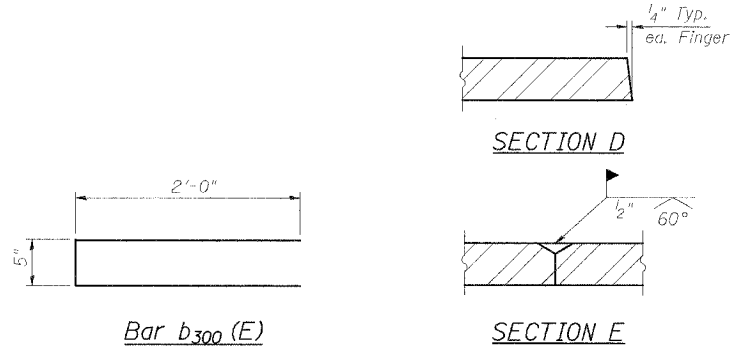
FINGER PLATE CUTTING DETAIL

Pier	a			b		
	-30°F	50°F	130°F	-30°F	50°F	130°F
S7,S10	5 3/4"	3 1/4"	3 1/4"	1 1/2"	4"	6 1/2"
S15	6 1/4"	3 1/2"	3 1/4"	1 1/2"	4 1/4"	7"
S21	5 1/4"	3"	3 1/4"	1 1/2"	3 3/4"	6"

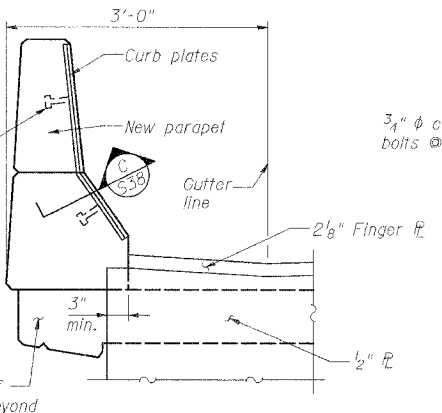
Note: For deck temperatures between those shown, interpolate between dimensions given above.

BILL OF MATERIAL

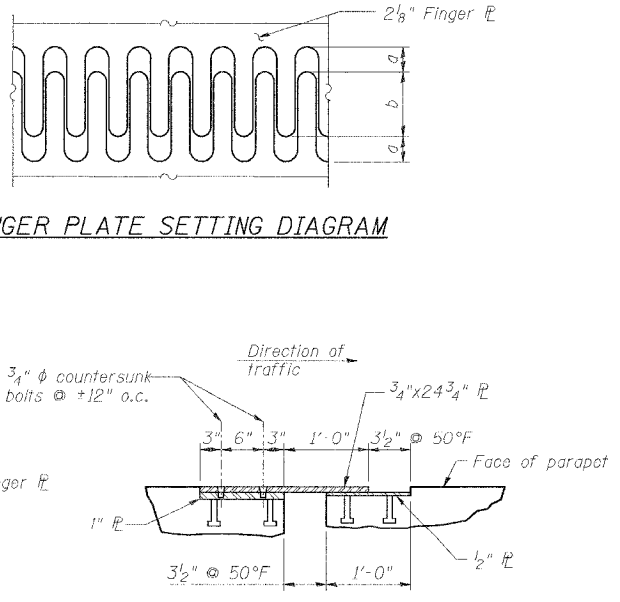
Bar	No.	Size	Length	Shape
a ₃₀₀ (E)	32	#5	24'-5"	—
b ₃₀₀ (E)	200	#4	4'-5"	C
Reinforcing Bars, Epoxy Coated			Pound	1,405
Fabric Reinforced Elastomeric Trough			Foot	116
Concrete Removal			Cu. Yd.	18.7
Concrete Superstructure			Cu. Yd.	18.7



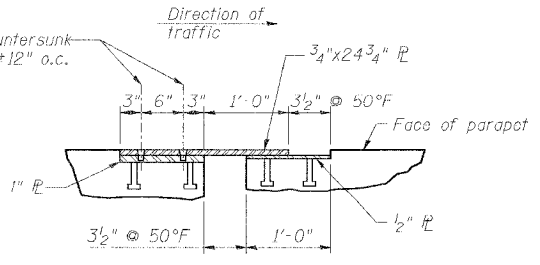
SECTION A



SECTION B



FINGER PLATE SETTING DIAGRAM



SECTION C

THEORETICAL STOOL HEIGHTS*

Span	Intermediate	Girder S1	Girder S2
S7	9 1/8"	9 1/8"	11 3/8"
S8	9"	8 7/8"	11 1/8"
S10	9"	8 7/8"	11 1/8"
S11	9 1/4"	9 1/8"	11 3/8"
S15	9 1/8"	9"	11 1/8"
S16	8 5/8"	9"	11 1/4"
S21	10 3/8"	11 1/8"	8 7/8"
S22	9 7/8"	11 1/4"	9"

*Must be verified prior to fabrication.

TYPICAL JOINT DETAILS

REVISIONS	
NAME	DATE

STATE OF ILLINOIS
DEPARTMENT OF TRANSPORTATION
REHABILITATION AND RETROFIT REPAIRS
FAI ROUTE 70
POPLAR STREET BRIDGE APPROACHES
ST. CLAIR COUNTY
STRUCTURE NO. 082-0142 (RAMP S)
SCALE:
DATE: 02/28/2006

DATE: 4/19/2006 FILENAME: P:\2001\1201\1300\2001\1201\1300\1240\drafting\roadwayrehab_cds\ramps\join\is-join1.dgn

DESIGNED	JPD
CHECKED	CSD
DRAWN	CLK
CHECKED	JPD