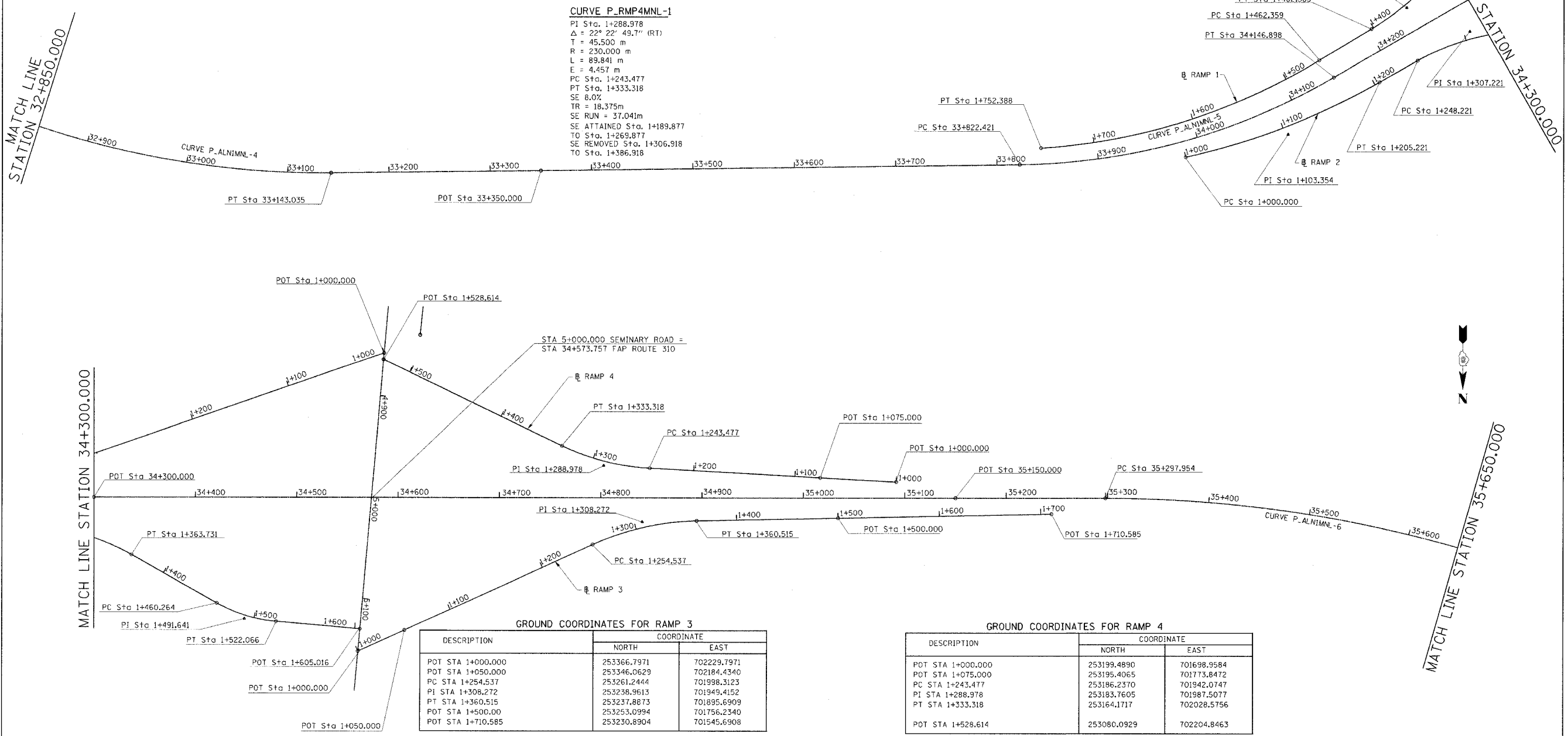


<b>CURVE P_ALN1MNL-4</b> PI Sta. 32+930.726 Δ = 28° 24' 02.2" (LT) T = 221.414 m R = 875.000 m L = 433.723 m E = 27.579 m PC Sta. 32+709.312 PT Sta. 33+143.035 SE 5.2% TR = 13.5m SE RUN = 390.623m SE ATTAINED Sta. 32+652.262 TO Sta. 32+730.762 SE REMOVED Sta. 33+121.585 TO Sta. 33+200.085	<b>CURVE P_ALN1MNL-5</b> PI Sta. 33+988.284 Δ = 29° 16' 39" (LT) T = 165.863 m R = 635.000 m L = 324.476 m E = 21.304 m PC Sta. 33+822.421 PT Sta. 34+146.898 SE 5.9% TR = 13.5m SE RUN = 281.577m SE ATTAINED Sta. 33+765.371 TO Sta. 33+843.871 SE REMOVED Sta. 34+125.448 TO Sta. 34+203.948	<b>CURVE P_ALN1MNL-6</b> PI Sta. 36+194.086 Δ = 70° 24' 53.2" (RT) T = 896.132 m R = 1,270.000 m L = 1,464.405 m E = 284.333 m PC Sta. 35+297.954 PT Sta. 36+858.745 SE 4.1% TR = 13.5m SE RUN = 1517.891m SE ATTAINED Sta. 35+240.904 TO Sta. 35+319.404 SE REMOVED Sta. 36+837.295 TO Sta. 36+915.795	<b>CURVE P_RMP1MNL-1</b> PI Sta. 1+362.205 Δ = 17° 50' 33.8" (RT) T = 40.814 m R = 260.000 m L = 80.968 m E = 3.184 m PC Sta. 1+321.391 PT Sta. 1+402.358 SE 8.0% TR = 18.375m SE RUN = 10.911m SE ATTAINED Sta. 1+276.131 TO Sta. 1+356.131 SE REMOVED Sta. 1+367.042 TO Sta. 1+407.042	<b>CURVE P_RMP1MNL-2</b> PI Sta. 1+610.213 Δ = 27° 27' 07.4" (RT) T = 147.854 m R = 605.326 m L = 290.029 m E = 17.795 m PC Sta. 1+462.359 PT Sta. 1+752.388 SE 5.9% TR = 18.375m SE RUN = 68.110m SE ATTAINED Sta. 1+000.000 TO Sta. 1+269.221 SE REMOVED Sta. 1+337.331 TO Sta. 1+417.331	<b>CURVE P_RMP2MNL-1</b> PI Sta. 1+103.354 Δ = 16° 49' 13.7" (LT) T = 103.354 m R = 699.046 m L = 205.221 m E = 7.599 m PC Sta. 1+000.000 PT Sta. 1+205.221 SE 8.0% TR = 18.375m SE RUN = 10.911m SE ATTAINED Sta. 1+000.000 TO Sta. 1+269.221 SE REMOVED Sta. 1+337.331 TO Sta. 1+417.331	<b>CURVE P_RMP2MNL-2</b> PI Sta. 1+307.221 Δ = 28° 46' 29.6" (RT) T = 59.000 m R = 230.000 m L = 115.510 m E = 7.447 m PC Sta. 1+248.221 PT Sta. 1+363.731 SE 8.0% TR = 18.375m SE RUN = 68.110m SE ATTAINED Sta. 1+000.000 TO Sta. 1+269.221 SE REMOVED Sta. 1+337.331 TO Sta. 1+417.331	<b>CURVE P_RMP2MNL-3</b> PI Sta. 1+491.641 Δ = 24° 25' 14.8" (LT) T = 31.377 m R = 145.000 m L = 61.802 m E = 3.356 m PC Sta. 1+460.264 PT Sta. 1+522.066 SE 7.84% TR = 18.375m SE RUN = 7.852m SE ATTAINED Sta. 1+417.331 TO Sta. 1+481.714 SE REMOVED Sta. 1+489.566 TO Sta. 1+554.566	<b>CURVE P_RMP3MNL-1</b> PI Sta. 1+308.272 Δ = 23° 21' 15.2" (RT) T = 53.735 m R = 260.000 m L = 105.978 m E = 5.495 m PC Sta. 1+254.537 PT Sta. 1+360.515 SE 8.0% TR = 18.375m SE RUN = 39.578m SE ATTAINED Sta. 1+200.937 TO Sta. 1+280.937 SE REMOVED Sta. 1+320.515 TO Sta. 1+400.515
--	--	--	---	--	---	--	---	--

F.A.P. RTE.	SECTION	COUNTY	TOTAL SHEETS	SHEET NO.
310	*	MADISON	452	18
STA. 32+850.000		TO STA. 35+650.000		
FED. ROAD DIST. NO.	ILLINOIS	FED. AID PROJECT		
SECTION 60-14 SECTION 60-14-B CONTRACT NO. 76321				



**GROUND COORDINATES FOR RAMP 3**

DESCRIPTION	COORDINATE	
	NORTH	EAST
POT STA 1+000.000	253366.7971	702229.7971
POT STA 1+050.000	253346.0629	702184.4340
PC STA 1+254.537	253261.2444	701988.3123
PI STA 1+308.272	253238.9613	701949.4152
PT STA 1+360.515	253237.8873	701895.6909
POT STA 1+500.000	253253.0994	701756.2340
POT STA 1+710.585	253230.8904	701545.6908

**GROUND COORDINATES FOR RAMP 4**

DESCRIPTION	COORDINATE	
	NORTH	EAST
POT STA 1+000.000	253199.4890	701698.9584
POT STA 1+075.000	253195.4065	701773.8472
PC STA 1+243.477	253186.2370	701942.0747
PI STA 1+288.978	253183.7605	701987.5077
PT STA 1+333.318	253164.1717	702028.5756
POT STA 1+528.614	253080.0929	702204.8463

**GROUND COORDINATES FOR RAMP 1**

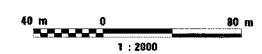
DESCRIPTION	COORDINATE	
	NORTH	EAST
POT STA 1+000.000	253073.7248	702204.2891
PC STA 1+321.391	253178.3567	702508.1708
PI STA 1+362.205	253191.6441	702546.7616
PT STA 1+402.358	253192.4681	702587.5675
PC STA 1+462.359	253193.5414	702647.5582
PI STA 1+610.213	253196.1861	702795.3885
PT STA 1+752.388	253130.3823	702927.7920

**GROUND COORDINATES FOR RAMP 2**

DESCRIPTION	COORDINATE	
	NORTH	EAST
PC STA 1+000.000	253209.5854	702808.6262
PI STA 1+103.354	253240.6075	702710.0379
PT STA 1+205.221	252542.7716	702606.6906
PC STA 1+248.221	253241.7740	702563.6933
PI STA 1+307.221	253242.9243	702504.6968
PT STA 1+363.731	253271.9069	702453.3057
PC STA 1+460.264	253319.3264	702369.2227
PI STA 1+491.641	253334.7400	702341.8918
PT STA 1+522.066	253337.4750	702310.6336
POT STA 1+605.016	253344.7054	702227.9993

**GROUND COORDINATES FOR FAP 310, (MAINLINE)**

DESCRIPTION	COORDINATE	
	NORTH	EAST
PI STA 32+930.726	252693.5320	703739.7940
PT STA 33+143.035	252801.8136	703546.6639
POT STA 33+350.000	252903.0287	703366.1375
PC STA 33+822.421	253134.0643	702954.0644
PI STA 33+988.284	253215.1790	702809.3890
PT STA 34+146.898	253215.1805	702643.5259
POT STA 34+300.000	253215.1819	702490.4235
POT STA 34+573.757	253215.1844	702216.6665
POT STA 35+150.000	253215.1896	701640.4235
PC STA 35+297.954	253215.1909	701492.4699
PI STA 36+194.086	253215.1990	700596.3380
PT STA 36+858.745	254059.4870	700295.9546



REVISIONS	
NAME	DATE

ILLINOIS DEPARTMENT OF TRANSPORTATION  
**HORIZONTAL CONTROL**  
FAP ROUTE 310  
SECTION 60-14, 60-14-B  
MADISON COUNTY  
DRAWN BY BANDY  
CHECKED BY STEUART  
DATE