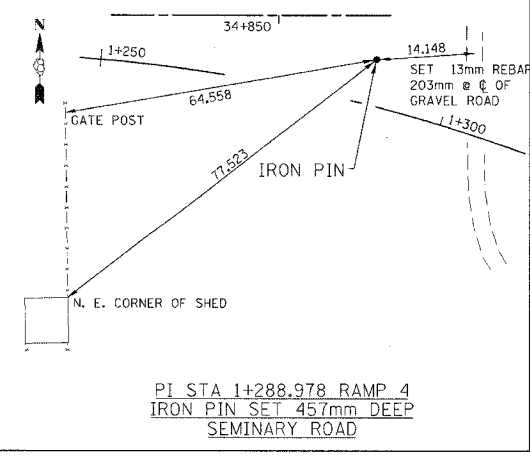
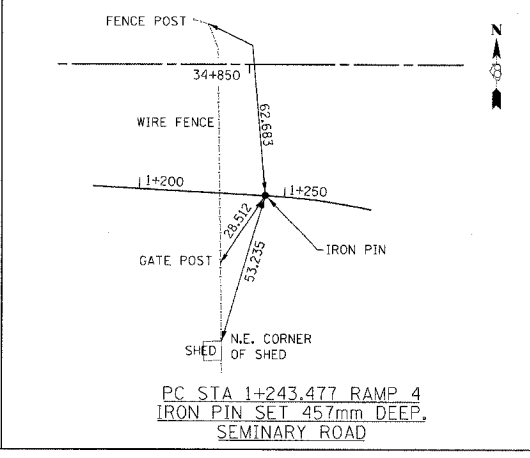
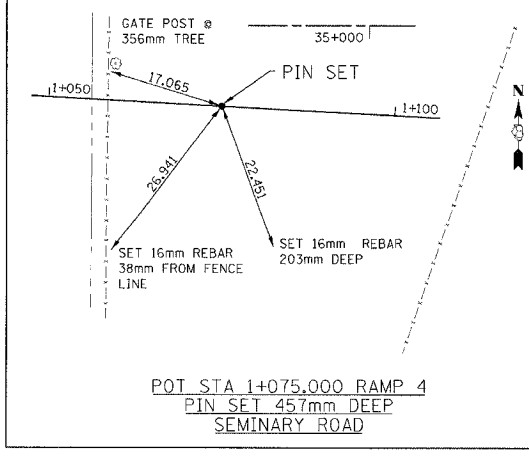
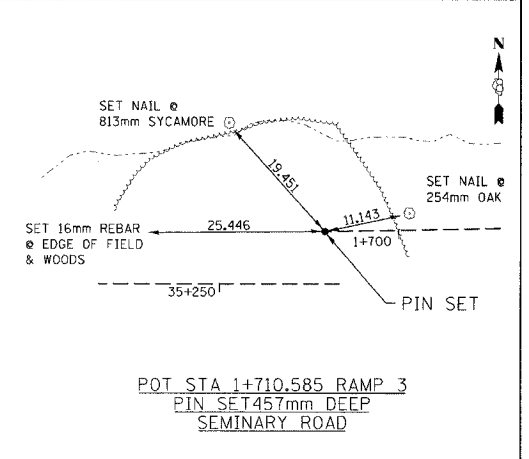
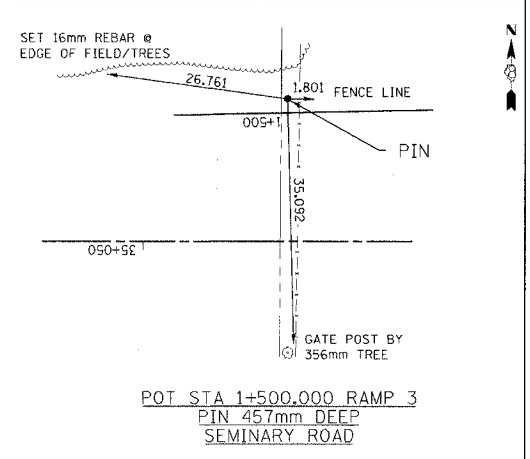
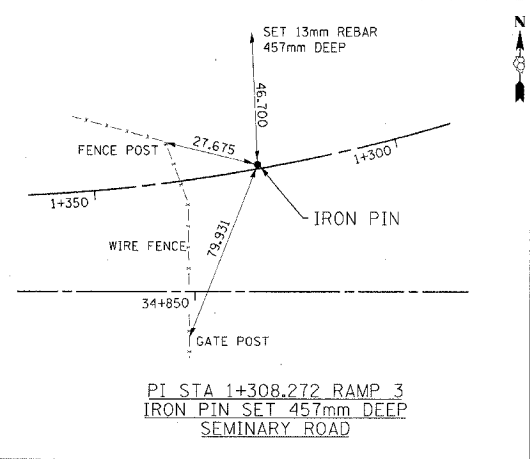
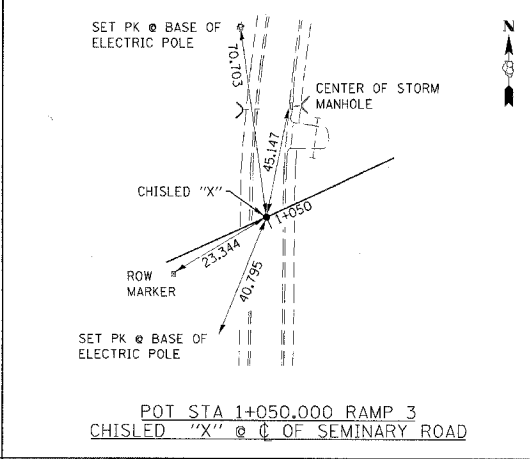
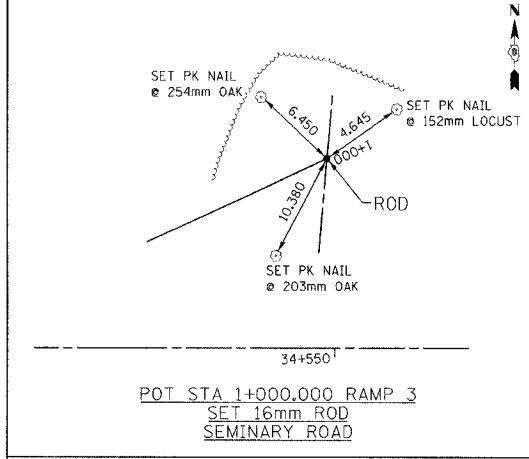
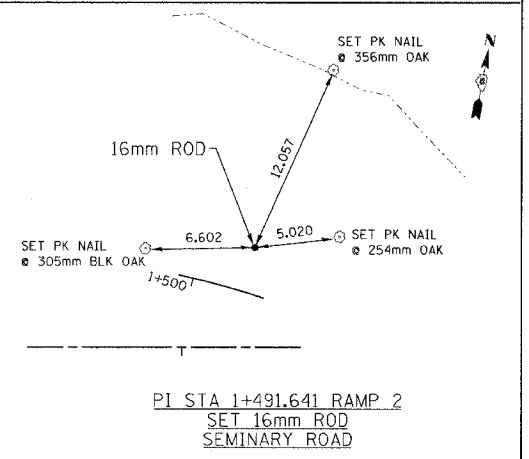
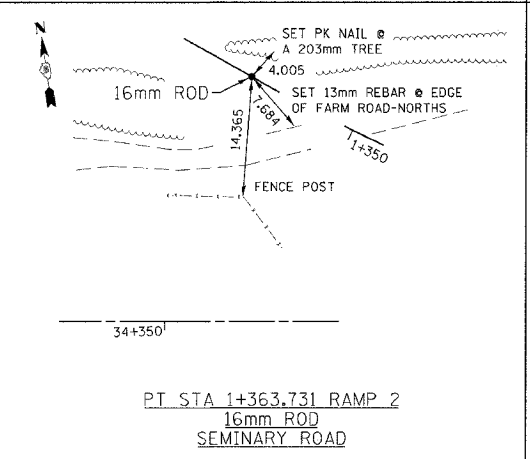
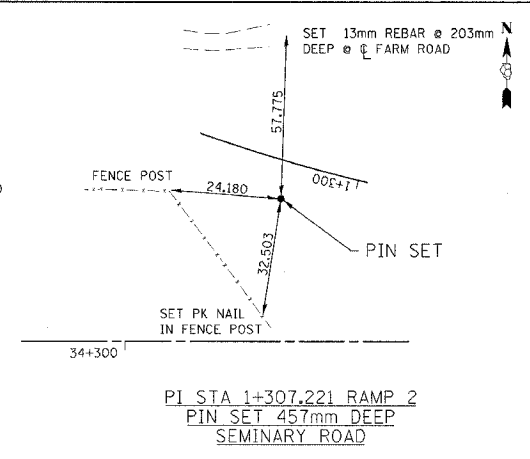
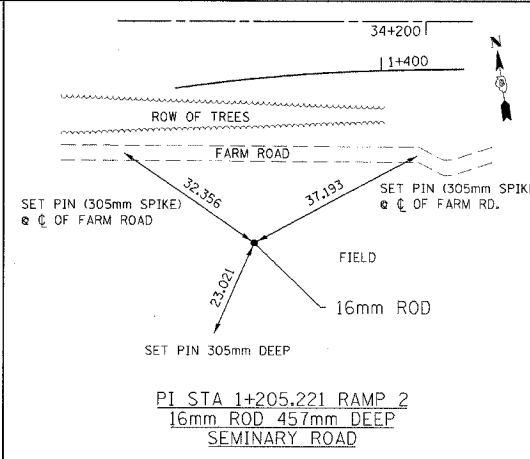
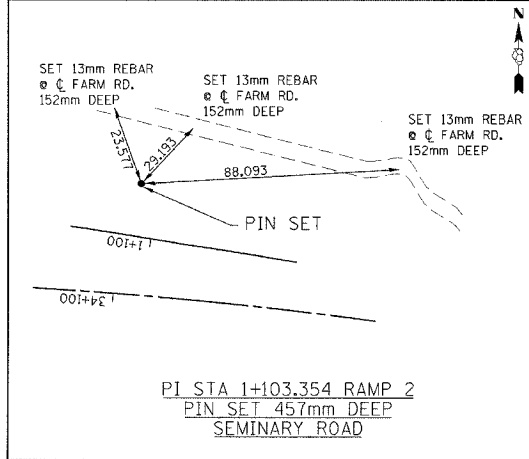
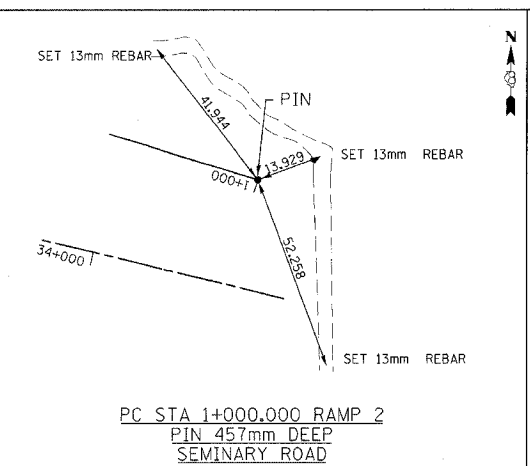
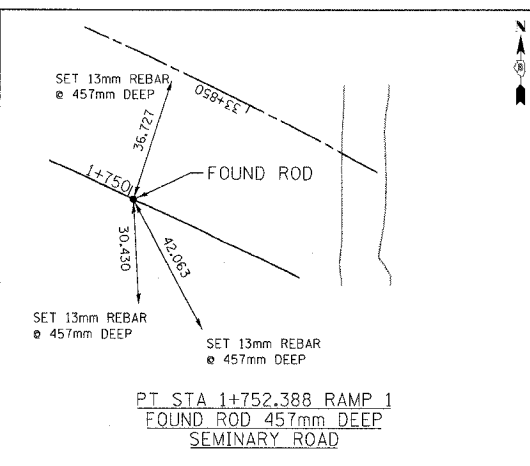
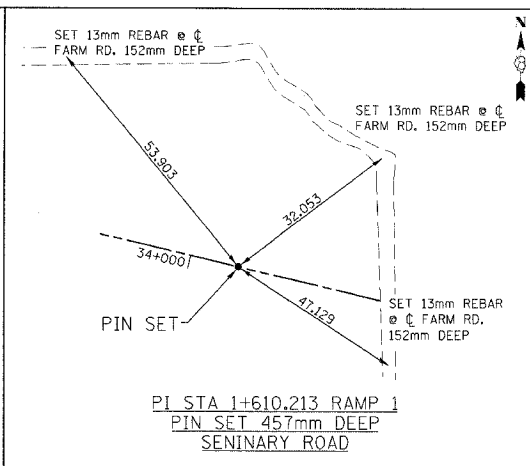
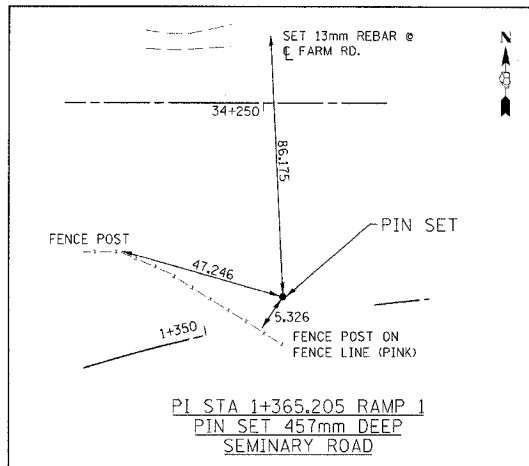


F.A.P. RTE.	SECTION	COUNTY	TOTAL SHEETS	SHEET NO.
310		MADISON	452	21
STA.		TO STA.		
FED. ROAD DIST. NO.		ILLINOIS FED. AID PROJECT		
SECTION 60-14		CONTRACT NO. 76321		



REVISIONS	
NAME	DATE

ILLINOIS DEPARTMENT OF TRANSPORTATION  
**TIE POINTS**  
 FAP ROUTE 310  
 FAP ROUTE 310 SECTION 60-14, 60-14-1B  
 MADISON COUNTY  
 DRAWN BY CLARK  
 CHECKED BY STEUART  
 DATE