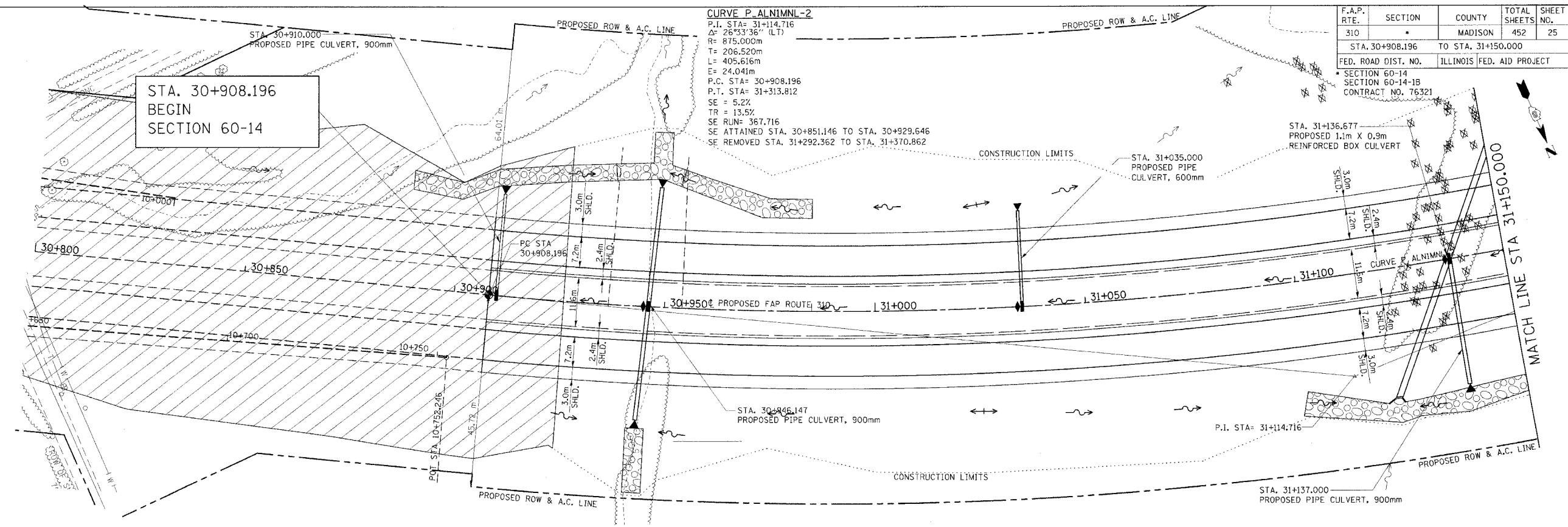


F.A.P. RTE.	SECTION	COUNTY	TOTAL SHEETS	SHEET NO.
310		MADISON	452	25
STA. 30+908.196 TO STA. 31+150.000		FED. ROAD DIST. NO. ILLINOIS FED. AID PROJECT		
SECTION 60-14 SECTION 60-14-B CONTRACT NO. 76321				

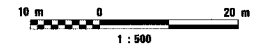
STA. 30+908.196  
BEGIN  
SECTION 60-14

**CURVE P. ALNIMNL-2**  
 P.I. STA= 31+14.716  
 $\Delta = 26^{\circ}33'36''$  (LT)  
 R= 875.000m  
 T= 206.520m  
 L= 405.616m  
 E= 24.041m  
 P.C. STA= 30+908.196  
 P.T. STA= 31+313.812  
 SE = 5.2%  
 TR = 13.5%  
 SE RUN= 367.716  
 SE ATTAINED STA. 30+851.146 TO STA. 30+929.646  
 SE REMOVED STA. 31+292.362 TO STA. 31+370.862



LEGEND

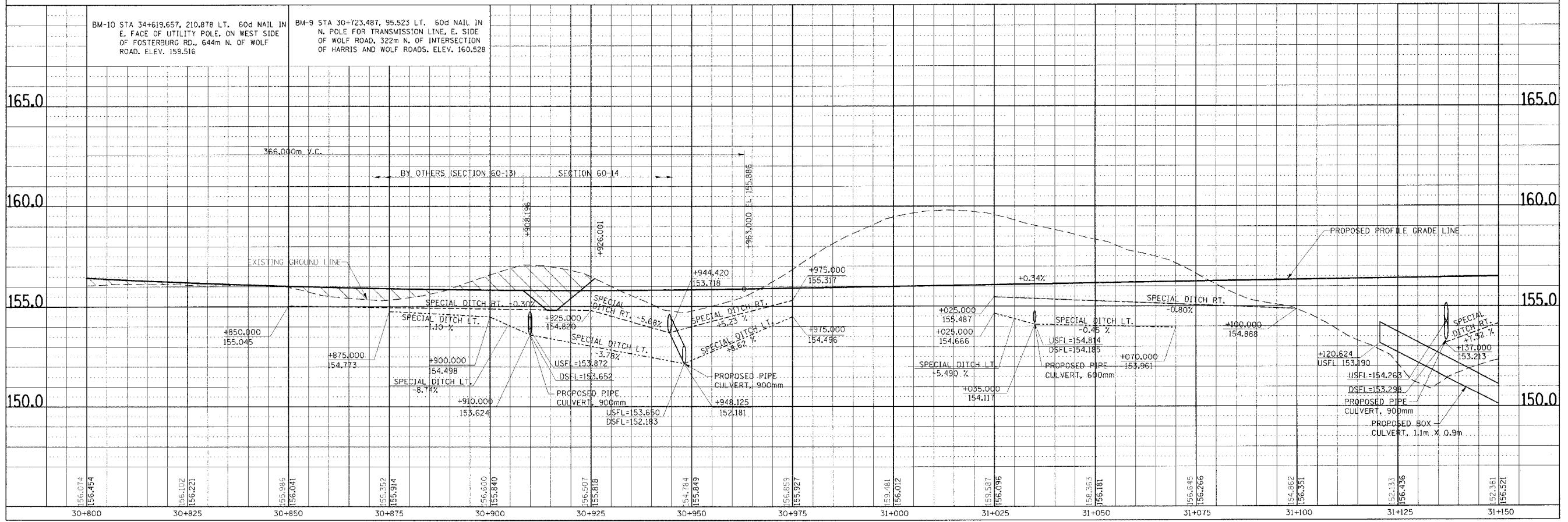
☒ TREE REMOVAL



NOTE: FOR RIPRAP DETAILS, SEE DRAINAGE SHEETS

BM-10 STA 34+619.657, 210.878 LT. 60d NAIL IN E. FACE OF UTILITY POLE, ON WEST SIDE OF FOSTERBURG RD., 644m N. OF WOLF ROAD. ELEV. 155.516

BM-9 STA 30+723.487, 95.523 LT. 60d NAIL IN N. POLE FOR TRANSMISSION LINE, E. SIDE OF WOLF ROAD, 322m N. OF INTERSECTION OF HARRIS AND WOLF ROADS. ELEV. 160.528



PLAN & PROFILE, FAP ROUTE 310, STA. 30+800.000 TO STA. 31+150.000

DATE	BY
DATE	BY
DATE	BY
DATE	BY
DATE	BY

DATE	BY
DATE	BY
DATE	BY
DATE	BY
DATE	BY

DRAWING: 15717/2005 OF 16.26 AM